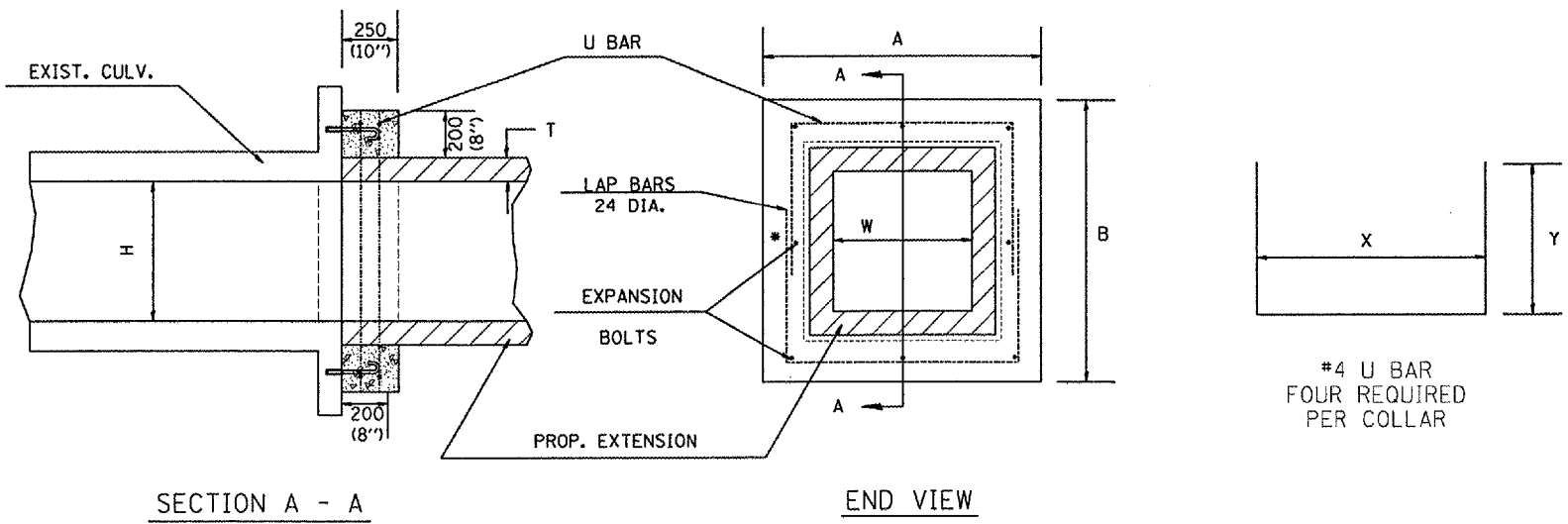


F.A.P. RTE.	SECTION	COUNTY	TOTAL SHEETS	SHEET NO.
315	-	FULTON	324	119
STA.		TO STA.		
FED. ROAD DIST. NO.		ILLINOIS FED. AID PROJECT		

\*109W-1,RS-2;110W,RS-1

\* MINIMUM 1' LAP ON U BARS



GENERAL NOTES

1. The collar shall be constructed entirely of CLASS SI CONCRETE and in accordance with the applicable portions of section 503 of the Standard Specifications. REINFORCEMENT BARS, EPOXY COATED shall conform to section 508.
2. Expansion bolts shall consist of approved expansions anchors, and M20 (3/4'') hook bolts which conform to Section 1006.09. These bolts shall extend at least 200(8'') into the new concrete.

\* Dimensions for ASTM C789.

DIMENSIONS

EXISTING BOX		A	B	T *	EACH COLLAR				
W	H				CL SI	REINF. BARS, EPOXY COATED		EXPANSION BOLTS	
mm (ft)	mm (ft)				m <sup>3</sup> (CU YD)	X	Y	kg (POUNDS)	NO.
600(2)	600(2)	1.22m (4'-0'')	1.22m (4'-0'')	100(4'')	0.21(0.27)	1.02m (3'-4'')	660(26'')	16(21)	8
900(3)	600(2)	1.52m (5'-0'')	1.22m (4'-0'')	100(4'')	0.24(0.32)	1.32m (4'-4'')	660(26'')	18(23)	8
900(3)	750(2.5)	1.52m (5'-0'')	1.37m (4'-6'')	100(4'')	0.26(0.34)	1.32m (4'-4'')	737(29'')	19(25)	8
900(3)	900(3)	1.52m (5'-0'')	1.52m (5'-0'')	100(4'')	0.28(0.36)	1.32m (4'-4'')	813(32'')	20(26)	8
900(3)	1200(4)	1.57m (5'-2'')	1.88m (6'-2'')	125(5'')	0.31(0.41)	1.37m (4'-6'')	991(39'')	22(29)	10
1200(4)	900(3)	1.88m (6'-2'')	1.57m (5'-2'')	125(5'')	0.31(0.41)	1.68m (5'-6'')	838(33'')	22(29)	10
1200(4)	1200(4)	1.88m (6'-2'')	1.88m (6'-2'')	125(5'')	0.34(0.45)	1.68m (5'-6'')	991(39'')	25(32)	12
1200(4)	1500(5)	1.93m (6'-4'')	2.24m (7'-4'')	150(6'')	0.39(0.51)	1.73m (5'-8'')	1.17m (3'-10'')	28(36)	14
1500(5)	1200(4)	2.24m (7'-4'')	1.93m (6'-4'')	150(6'')	0.39(0.51)	2.03m (6'-8'')	1.02m (3'-4'')	28(36)	14
1500(5)	1500(5)	2.24m (7'-4'')	2.24m (7'-4'')	150(6'')	0.42(0.55)	2.03m (6'-8'')	1.17m (3'-10'')	29(38)	16
1500(5)	1800(6)	2.29m (7'-6'')	2.59m (8'-6'')	175(7'')	0.46(0.60)	2.08m (6'-10'')	1.35m (4'-5'')	32(42)	16
1800(6)	1200(4)	2.59m (8'-6'')	1.98m (6'-6'')	175(7'')	0.43(0.56)	2.39m (7'-10'')	1.04m (3'-5'')	30(39)	14
1800(6)	1500(5)	2.59m (8'-6'')	2.29m (7'-6'')	175(7'')	0.46(0.60)	2.39m (7'-10'')	1.19m (3'-11'')	32(42)	16
1800(6)	1800(6)	2.59m (8'-6'')	2.59m (8'-6'')	175(7'')	0.49(0.64)	2.39m (7'-10'')	1.35m (4'-5'')	35(45)	16
1800(6)	2400(8)	2.64m (8'-8'')	3.25m (10'-8'')	200(8'')	0.57(0.74)	2.44m (8'-0'')	1.68m (5'-6'')	39(51)	18
2400(8)	2400(8)	3.25m (10'-8'')	3.25m (10'-8'')	200(8'')	0.63(0.82)	3.05m (10'-0'')	1.68m (5'-6'')	43(56)	20

All dimensions are in millimeters (inches) unless otherwise noted.

ILLINOIS DEPARTMENT OF TRANSPORTATION  
**DISTRICT CADD STANDARD**  
 COLLAR FOR  
 BOX CULVERT  
 EXTENSIONS  
 CADD STANDARD 540001-D4  
 SCALE: NOT DRAWN TO SCALE  
 DRAWN BY CADD  
 CHECKED BY

DATE	REVISIONS	BY
1-1-97	RENUM. J-12.01. METRICS, NEW REVISION BOX, REVISED TITLE BOX, ADDED QUANTITY CALCULATION BOX.	T.P.

cs:/projects/us136sum/us136culvert.ts.dgn