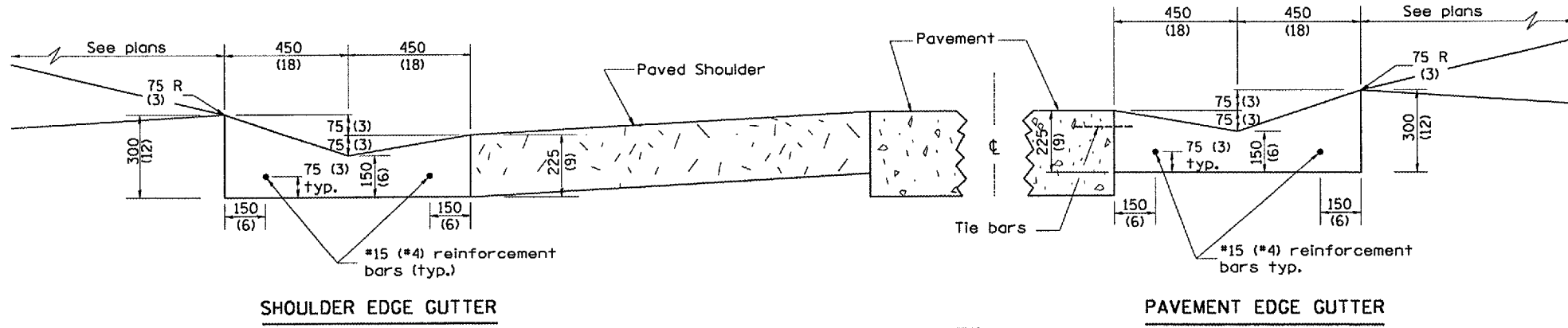


F.A.P. RTE.	SECTION	COUNTY	TOTAL SHEETS	SHEET NO.
315		FULTON	324	122
STA.		TO STA.		
FED. ROAD DIST. NO. 4 ILLINOIS FED. AID PROJECT				

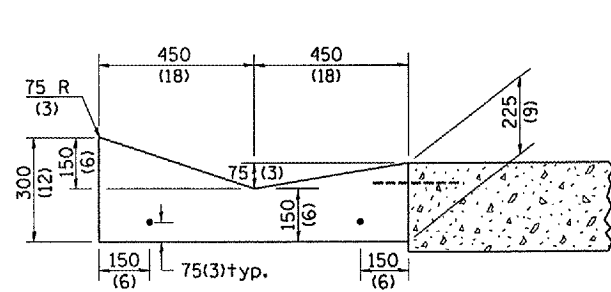
*109W-1,RS-2;110W,RS-1



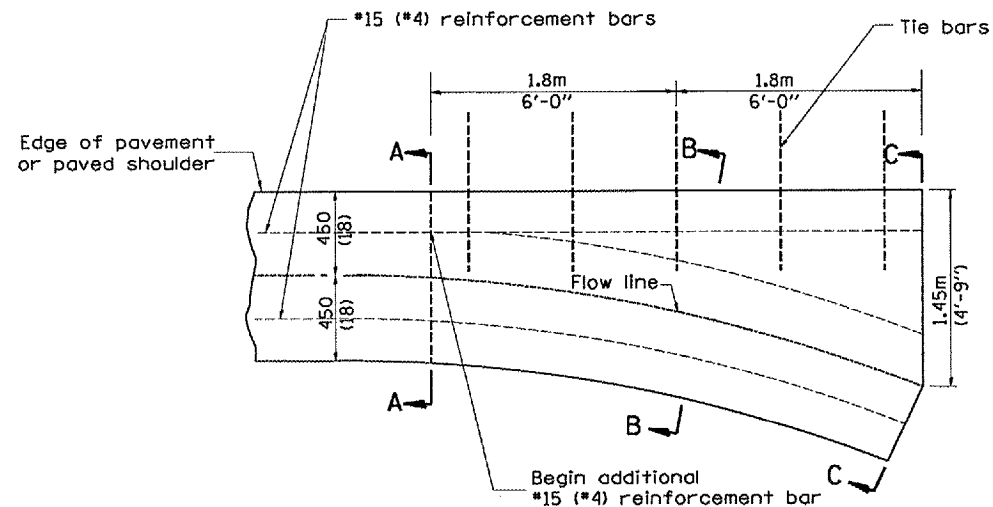
SHOULDER EDGE GUTTER

PAVEMENT EDGE GUTTER

TYPE A GUTTER (MODIFIED)



SECTION A-A

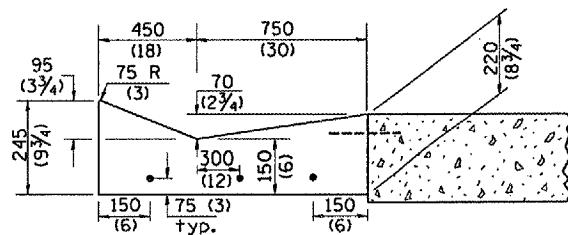


PLAN

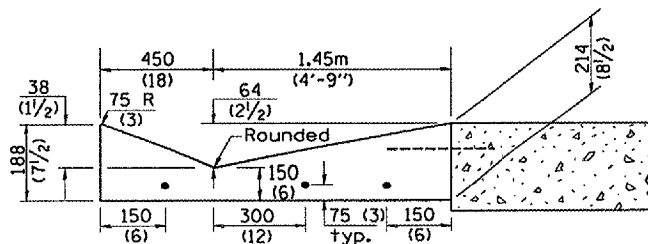
QUANTITY
Section C-C to A-A= 0.92 m³
(1.2 cu. yd.) concrete.

GENERAL NOTES:

1. TYPE A GUTTER (MODIFIED) shall conform to the applicable portions of Section 606.
2. Tie bars shall be No. 20 (No. 6) at 600mm (24") centers unless otherwise shown.
3. Gutter, gutter inlets, gutter outlets, and gutter entrances shall be tied to rigid pavement in accordance with details shown on Standard 420001.
4. Joints shall be constructed in accordance with Article 606.06.
5. Welded wire fabric shall conform to Article 1006.10(c)(1), and shall not be less than 2.83 kg/m² (58 lbs/100 sq.ft.).



SECTION B-B



SECTION C-C

INLET

QUANTITIES	
CALC. BY:	DATE:
CHECKED BY:	DATE:
QUANTITY CALCULATIONS ARE ON FILE AT THE DISTRICT 4 OFFICE; BUREAU OF PROJECT IMPLEMENTATION; DOCUMENTATION SECTION	

DGN-ONLY

All dimensions are in millimeters (inches) unless otherwise noted.

ILLINOIS DEPARTMENT OF TRANSPORTATION
DISTRICT CADD STANDARD

TYPE A GUTTER, (MODIFIED)
(INLET, OUTLET & ENTRANCE)

CADD STANDARD 606101-D4 SHEET 1 OF 3
SCALE: NOT DRAWN TO SCALE
DRAWN BY CADD
CHECKED BY

DATE	REVISIONS	BY
1-1-97	RENUM. A-1.02, NEW REVISION	T.P.
	BOX. ELIMINATED EXPANSION	
	ANCHOR TIES	
2-28-02	ENTRANCE TYPICALS REVISED	M.A.
1-10-07	REVISED QUANTITY	M.A.