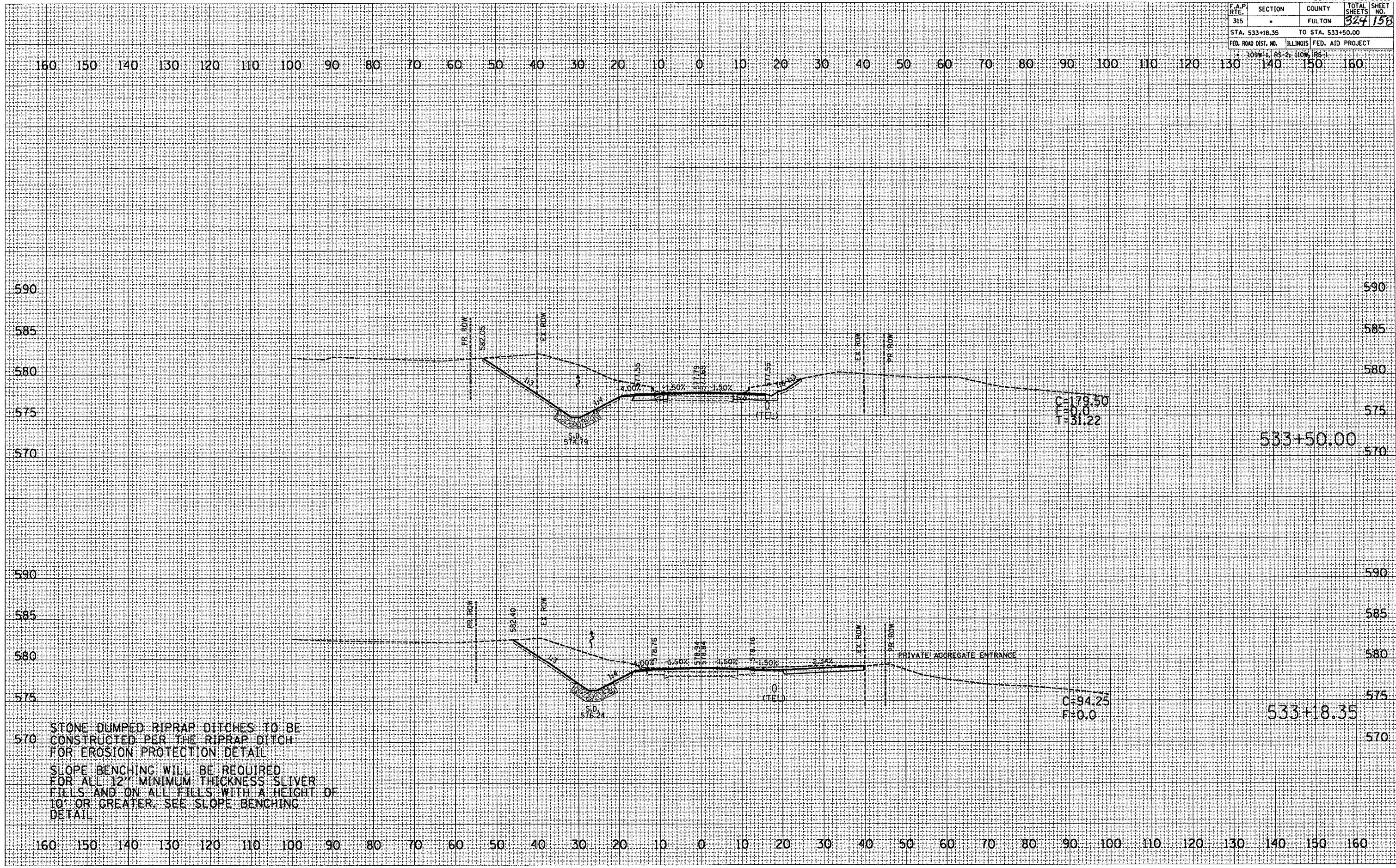


F.A.P. RTE.	SECTION	COUNTY	TOTAL SHEETS	SHEET NO.
315	-	FULTON	324	158
STA. 533+18.35		TO STA. 533+50.00		
FED. ROAD DIST. NO.		ILLINOIS FED. AID PROJECT		

FINAL SURVEY	DATE
REVISIONS	BY
NO. 1	
NO. 2	
NO. 3	
NO. 4	
NO. 5	
NO. 6	
NO. 7	
NO. 8	
NO. 9	
NO. 10	

ORIGINAL SURVEY	DATE
REVISIONS	BY
NO. 1	
NO. 2	
NO. 3	
NO. 4	
NO. 5	
NO. 6	
NO. 7	
NO. 8	
NO. 9	
NO. 10	

PLOT DATE: 9/25/2007
 FILE NAME: c:\projects\138\sum\138sum\138sum.dwg
 USER: jms
 PLOTTER: HP DesignJet 5000



STONE DUMPED RIPRAP DITCHES TO BE CONSTRUCTED PER THE RIPRAP DITCH FOR EROSION PROTECTION DETAIL
 SLOPE BENCHING WILL BE REQUIRED FOR ALL 12" MINIMUM THICKNESS SLIVER FILLS AND ON ALL FILLS WITH A HEIGHT OF 10' OR GREATER. SEE SLOPE BENCHING DETAIL.