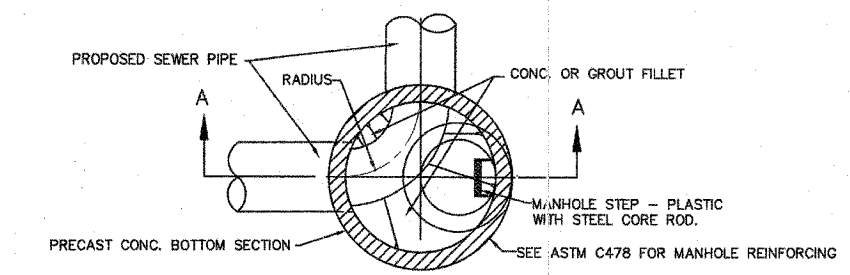
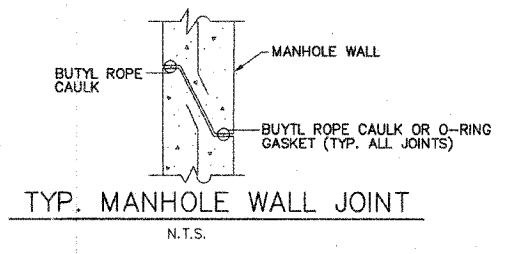


F.A.S. RTE.	SECTION	COUNTY	TOTAL SHEETS	SHEET NO.
556	04-00119-03-BR	SANGAMON	26	13
STA.		TO STA.		
FED. ROAD DIST. NO. 5		ILLINOIS FED. AID PROJECT		



MANHOLE TYPE	INSIDE DIA.	MIN. WALL THICKNESS
A-4	4'-0"	5"

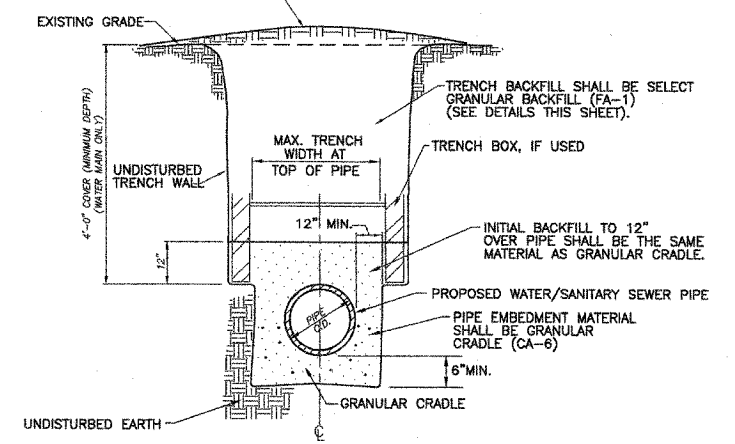
NOTE:  
INVERT FLOWLINE AT BENDS SHALL HAVE A HORIZONTAL RADIUS EQUAL TO OR LARGER THAN THE PIPE DIAMETER.  
FLOW CHANNEL SHALL HAVE A SEMI-CIRCULAR CROSS SECTION



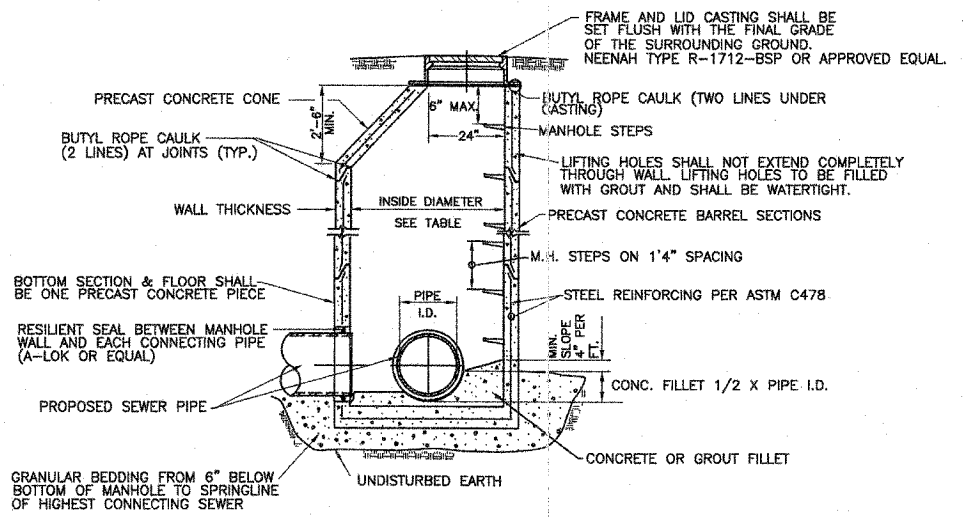
TYP. MANHOLE WALL JOINT  
N.T.S.

EARTH BACKFILL SHALL BE LEFT SLIGHTLY MOUND TO ALLOW FOR SETTLEMENT IN TURF OR CULTIVATED AREAS. FOR STREETS OR DRIVEWAYS, SEE SURFACE RESTORATION DETAILS, THIS SHEET

NOTES:  
1. TYPE OF MATERIAL AND COMPACTION FOR GRANULAR CRADLE AND INITIAL BACKFILL SHALL MEET PROJECT SPECIFICATIONS AND ASTM D2321 (LATEST REVISION)

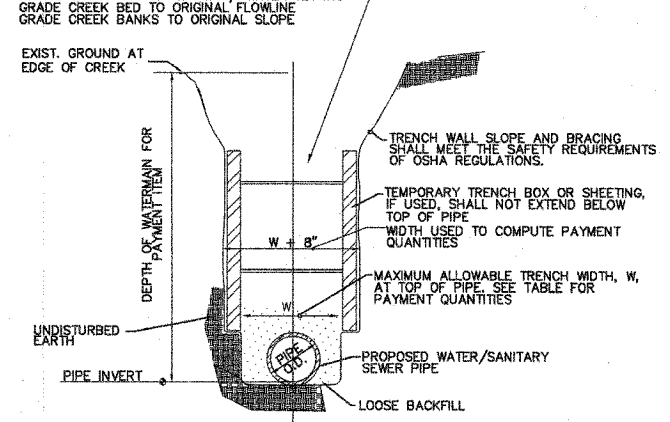


TYPICAL DETAIL - PVC & D.I. WATER/SEWER INSTALLATION UNDER OR WITHIN 2' OF PAVEMENT  
N.T.S.

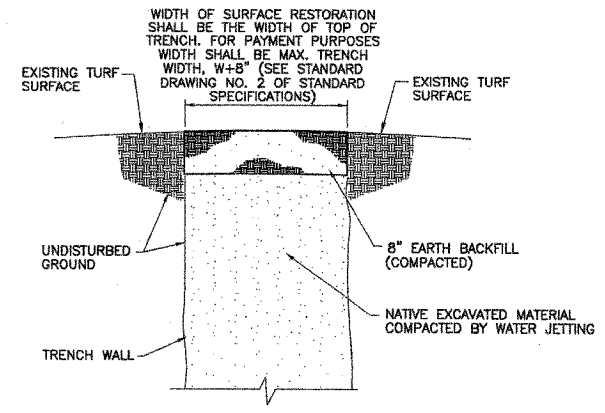


SECTION A-A MANHOLE - TYPE "A"  
N.T.S.

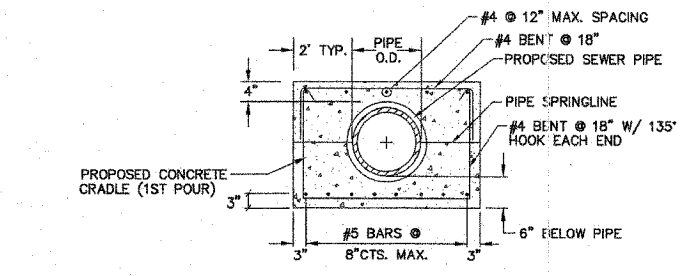
TRENCH BACKFILL & COMPACTION REQUIREMENTS  
NATIVE EXCAVATED MATERIAL W/ WATER JETTING GRADE CREEK BED TO ORIGINAL FLOWLINE GRADE CREEK BANKS TO ORIGINAL SLOPE



TYPICAL CREEK CROSSING INSTALLATION  
N.T.S.



SURFACE RESTORATION DETAIL TURF SURFACES (IF NECESSARY)  
N.T.S.



CONCRETE CRADLE DETAIL FOR STREAM CROSSING  
N.T.S.

NOTES:  
1. D.I.P. PIPE JOINTS SHALL BE OUTSIDE OF THE STREAM CROSSING.  
2. NO POLY WRAP WHEN SANITARY SEWER IS CONCRETE ENCASED.

EXISTING LEGEND

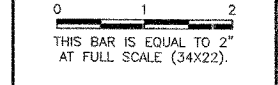
RIGHT OF WAY	R.O.W.	8"
SANITARY SEWER	SS	12"
STORM SEWER	SS	12"
WATERMAIN	W	6"
WATER SERVICE w/ METER PIT	W	6"
GATE VALVE AND VALVE BOX	G	
GAS MAIN	G	
TELEPHONE CABLE	T	
FIRE HYDRANT	F	
EDGE OF SIDEWALK		
MANHOLE		
ROAD SIGN		
POWER POLE		
LIGHT POLE		
INLET		
SOIL BORING		
GUY WIRE		
TREE OR SHRUB		

PROPOSED LEGEND

WATERMAIN	W 6"
WATER SERVICE RECONNECTION	W 6"
WATERLINE TO BE ABANDONED	W 6"
SANITARY SEWER	SS 12"
MANHOLE	
CAP	
GATE VALVE AND VAULT	
SELECT GRANULAR BACKFILL	

REVISIONS

NUMBER	BY	DATE



VILLAGE OF ROCHESTER  
ROCHESTER, ILLINOIS

WATERMAIN & SANITARY SEWER REPLACEMENT  
EAST MAIN STREET BRIDGE  
TYPICAL DETAILS I

© Copyright CMT, Inc.

**CMT**  
CRAWFORD, MURPHY & TILLY, INC.  
CONSULTING ENGINEERS  
License No. 184-000513

Professional Engineer  
MURPHY F. SUMNER  
No. 082-051267  
Expires 11/30/07

DESIGN BY:	SJB
DRAWN BY:	RDM
CHECKED BY:	SJB
APPROVED BY:	HTA
DATE:	OCTOBER 15, 2007
JOB No:	07044-04-00

PATH: L:\SangamonCo\0402801\Draw Sheets  
FILE: C-DETAILS-1.dwg  
UPDATE BY: Rick Murphy  
DATE: Monday, October 08, 2007 9:57:02 AM