

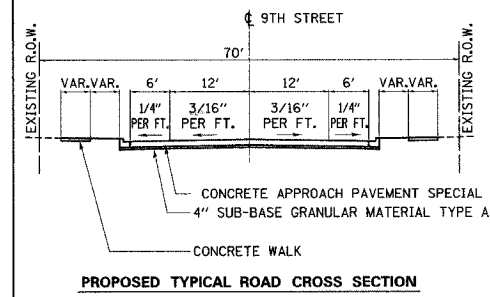
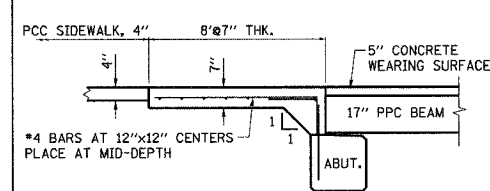
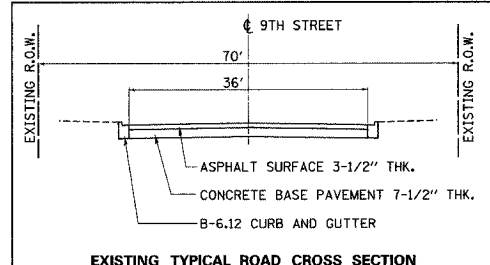
F.A. RTE.	SECTION	COUNTY	TOTAL SHEETS	SHEET NO.
9th	05-00142-00-BR	COLES	16	4
STA. 14+00		TO STA. 15+80		
FED. ROAD DIST. NO.		ILLINOIS		FED. AID PROJECT



Proposed Structure # 015-6339
 Sta. 14+95, 48ft. Wide by 77.5 ft. Long
 Three Span Precast, Prestressed Concrete
 Deck Beam Bridge 17" Depth, Skew 10° Rt.
 With 30 ft Approaches/Sidewalks

POLYUREA PAVEMENT MARKING LINE-4"
 STA 13+80 LT TO 15+60 LT WHITE 4" 180 FT
 STA 14+20 RT TO 15+80 RT WHITE 4" 160 FT
 STA 13+60 C TO 16+00 C YELLOW DASHED 4" 60 FT
 TOTAL 400 FT

BENCHMARK
 SMALL SPIKE IN LARGE P.P.
 NEAR SW CORNER OF BRIDGE
 ELEVATION = 707.67



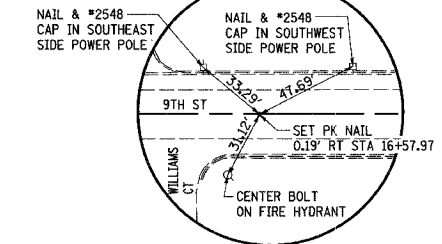
NEW PREFORMED EXPANSION JOINT 1" AT JUNCTION OF NEW PCC SIDEWALK AND CURB & GUTTER WHERE NEW MEETS EXISTING. TYPICAL ALL CORNERS OF NEW BRIDGE. TO BE INCLUDED THE COST OF SIDEWALK & APPROACH PAVEMENT.

NEW PCC SIDEWALKS 7" THK. (SPECIAL) 8 FT. LENGTH VARYING WIDTH AT EACH CORNER.(SEE DETAIL THIS SHEET)

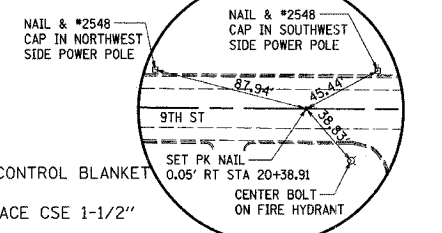
FLEXIBLE PAVEMENT CONNECTOR

NEW BRIDGE APPROACH (SPECIAL) EACH SIDE OF THE NEW STRUCTURE. A B6.12 CURB TO BE USED ON THE APPROACH TO MATCH THE EXISTING CURB. TYPICAL ALL SIDES.

HOT MIX ASPHALT 1-1/2" SURFACE TO MATCH EXISTING. TYPICAL EACH END.

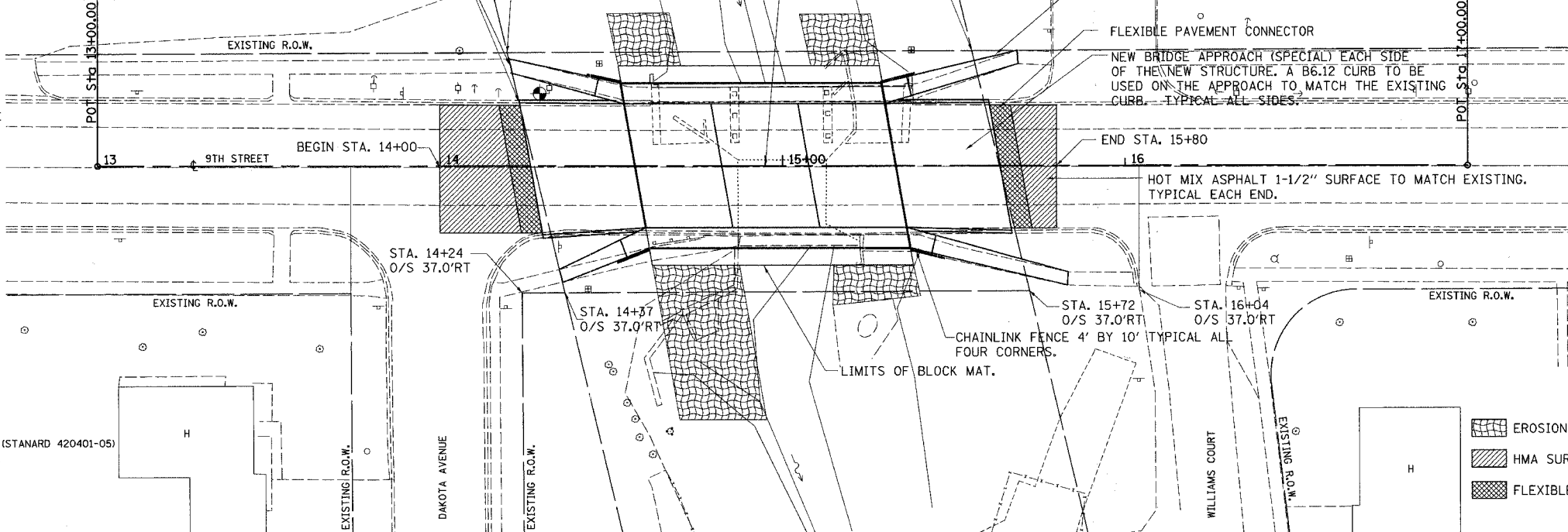


BASLINE TIE
 STATION 16+57.97, 0.19' RT.



BASLINE TIE
 STATION 20+38.91, 0.05' RT.

- EROSION CONTROL BLANKET
- HMA SURFACE CSE 1-1/2"
- FLEXIBLE CONNECTOR



DATE	BY	REVISION

DATE	BY	REVISION

PLOT DATE = 10/25/2007
 PLOT SCALE = 20.0000 / IN.
 USER NAME = USER

