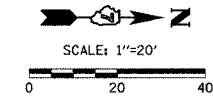


F.A. RTE.	SECTION	COUNTY	TOTAL SHEETS	SHEET NO.
9TH 05-00142-00-BR		COLES	16	5
STA. 14+00	TO STA. 15+80			
FED. ROAD DIST. NO.	ILLINOIS FED. AID PROJECT			

BENCHMARK  
SMALL SPIKE IN LARGE P.P.  
NEAR SW CORNER OF BRIDGE  
ELEVATION = 707.67



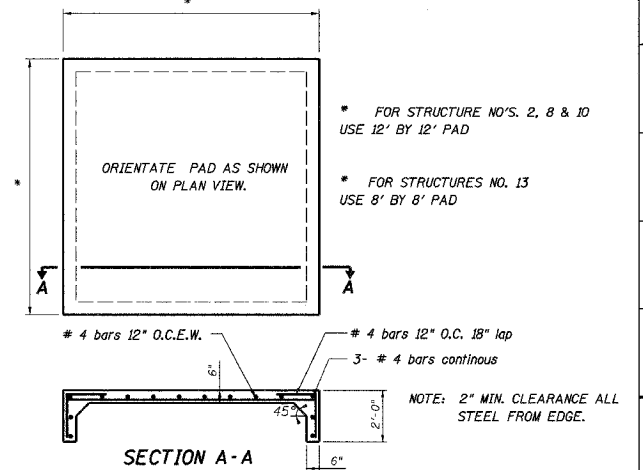
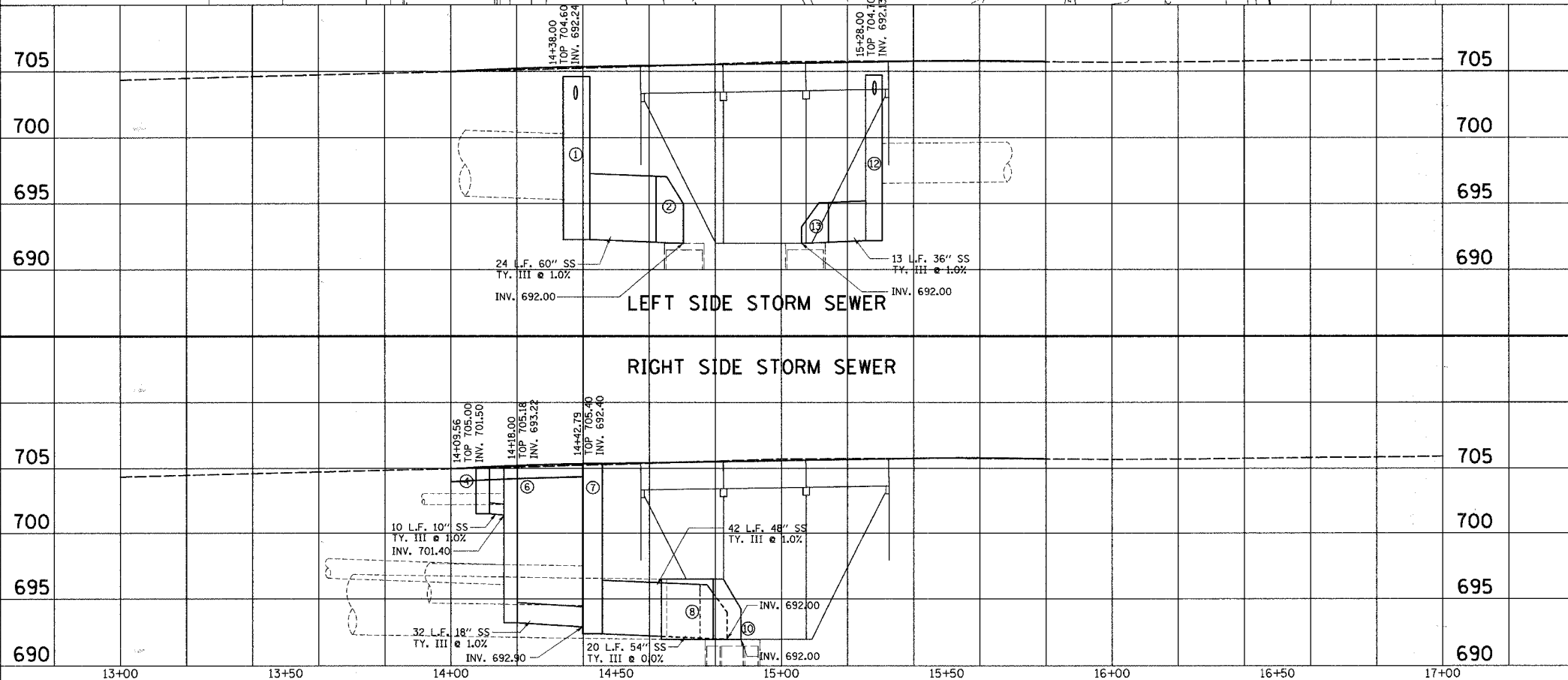
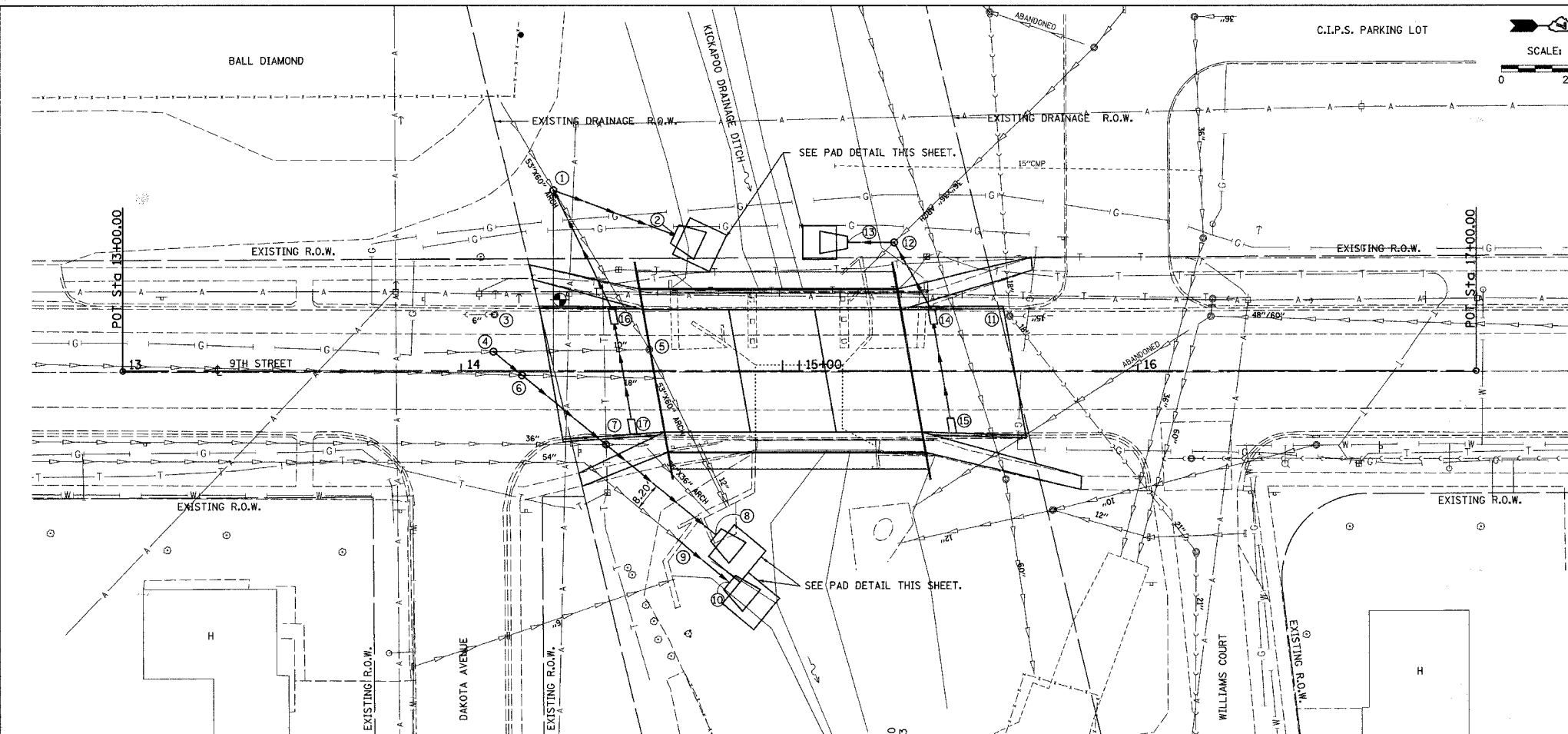
PT.	LOCATION	DESCRIPTION	LID OR GRATE	INLET INVERT	OUTLET INVERT
1	14+28.00, 53.30' LT	MH TY A 8' DIA TY1 F&CL	704.60	695.32	692.24
2	14+62.00, 35.66' LT	60" FLAR END SEC			692.00
3	14+09.88, 16.25' LT	MH TO BE ADJ	704.67(E), 70 . (P)		
4	14+09.56, 5.66' LT	MH TY A 4' DIA TY1 F&CL	705.00	702.20	701.50
5	14+55.65, 6.27' LT	MH TO BE REM	705.33		695.03
6	14+18.00, 1.29' RT	MH TY A 4' DIA TY1 F&CL	705.18	696.08	693.22
7	14+42.79, 21.70' RT	MH TY A 6' DIA TY1 F&CL	705.40	694.57	692.40
8	14+75.3, 48.5' RT	48" FLAR END SEC			692.00
9	14+63.7, 49.5' RT	54" COLLAR		692.00	692.00
10	14+79.3, 62.4' RT	54" FLAR END SEC			692.00
11	15+62.19, 16.14' LT	MH TO BE ADJ	705.42(E), 706.19(P)		
12	15+28.00, 37.80' RT	MH TY A 5' DIA TY1 F&CL	704.70	696.55	692.13
13	15+14.25, 37.80' RT	36" FLAR END SEC			692.00
14	15+39.50, 15.90' LT	TYPE C INLET 609006-02	705.49	703.49	703.27
15	15+45.00, 16.06' RT	TYPE C INLET 609006-02	705.52	703.78	703.49
16	14+45.00, 15+94' LT	TYPE C INLET 609006-02	705.10	703.10	702.91
17	14+41.00, 16.36' RT	TYPE C INLET 609006-02	705.12	703.39	703.10

STRUCTURE NUMBER FROM	STRUCTURE NUMBER TO	LOW STR. MATERIAL C.Y.	INVERT ELEVATION		STORM SEWERS TYPE III (RCCP)						
			UPPER END	LOWER END	12" L.F.	18" L.F.	36" L.F.	48" L.F.	54" L.F.	60" L.F.	
1	2	-	693.24	693.00						38	
4	6	2	701.50	701.40	10						
6	7	53.5	694.22	693.90		32					
7	8	33.5	693.40	693.00				42			
9	10	-	692.00	692.00					20		
12	13	-	693.13	693.00			13				
15	14	3.8	703.78	703.49	29						
14	12	1.6	703.49	703.27	23						
17	16	3.8	703.39	703.10	29						
16	1	1.6	703.10	702.91	39						
TOTALS			100		130	32	13	42	20	38	

STRUCTURE NUMBER FROM	STRUCTURE NUMBER TO	STORM SEWERS SCHEDULE REMOVAL			
		10" L.F.	18" L.F.	36" X 36"	53" X 60"
1	OUTLET				
4	5	47			107
6	53" X 60"		42		
7	OUTLET			40	
12	OUTLET			14	
TOTALS		47	42	54	107

NOTES

- ALL STORM SEWERS SHALL BE CLASS A RCCP.
- ALL MANHOLES SHALL BE TYPE A.
- OMIT THE TOE END BLOCK ON ALL FLARED END SECTIONS SEE PAD DETAIL THIS SHEET.



PT.	LOCATION	DESCRIPTION	PAD SIZE	CLASS SI CONC. CUYD	REINFORCEMENT BARS LBS	
2	14+62.00, 35.66' LT	60" FLAR END SEC	12X12	4.4	434	
8	14+75.3, 48.5' RT	48" FLAR END SEC	12X12	4.4	434	
10	14+79.3, 62.4' RT	54" FLAR END SEC	12X12	4.4	434	
13	15+14.25, 37.80' RT	36" FLAR END SEC	8X8	2.4	256	
TOTAL					15.6	1558

PLAN  
DATE: \_\_\_\_\_  
BY: \_\_\_\_\_  
CHECKED: \_\_\_\_\_  
DATE: \_\_\_\_\_  
NOTE BOOK NO. \_\_\_\_\_  
DRAWING FILE NAME: \_\_\_\_\_

PROFILE  
DATE: \_\_\_\_\_  
BY: \_\_\_\_\_  
CHECKED: \_\_\_\_\_  
DATE: \_\_\_\_\_  
NOTE BOOK NO. \_\_\_\_\_  
DRAWING FILE NAME: \_\_\_\_\_

PLOT DATE = 10/25/2007  
FILE NAME = P:\CADD\Projects\14th St Bridge\Drawings\SSR\ANR\PF.dgn  
PLOTTER = HP DesignJet 5000  
USER NAME = JUSER