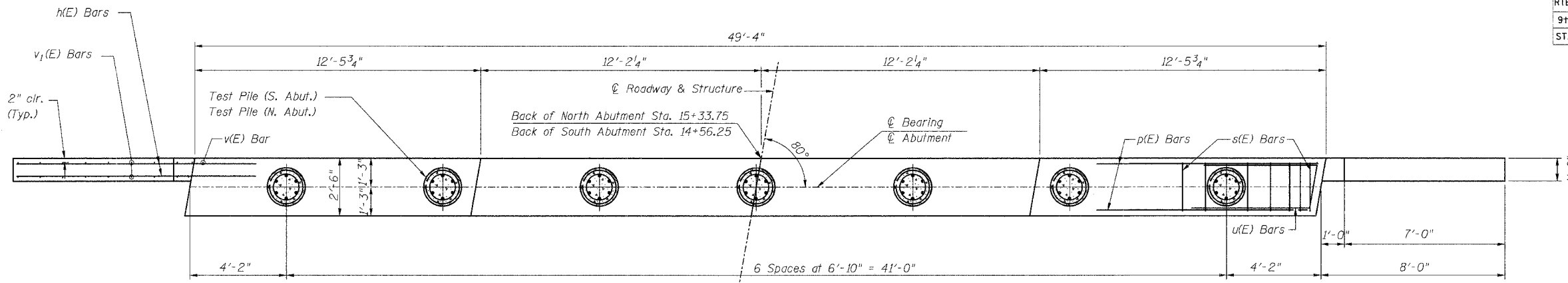
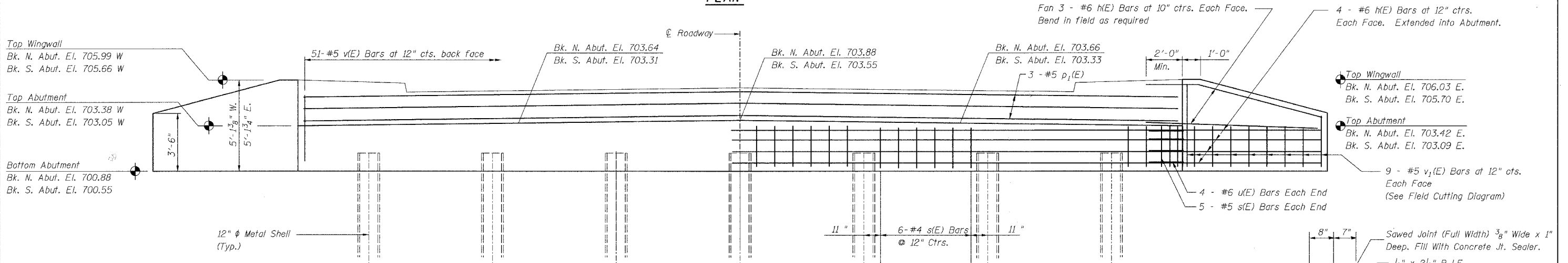


RTE.	SECTION	COUNTY	TOTAL SHEETS	SHEET NO.
9th	05-00142-00-BR	COLES	16	12
STA. 14+00		TO STA.15+80		

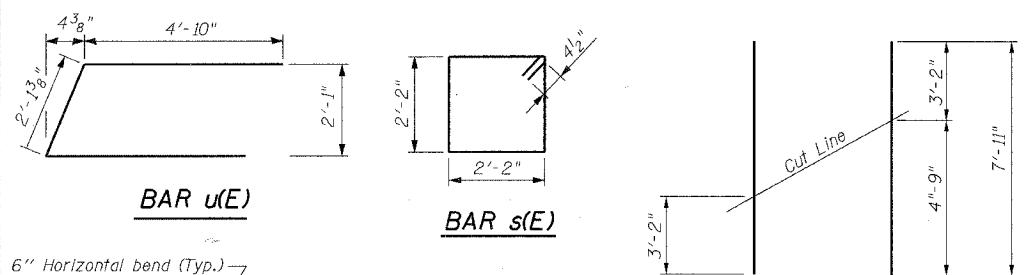


PLAN



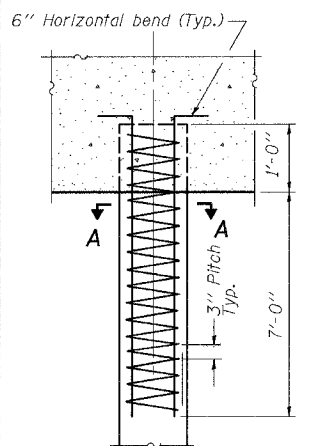
ELEVATION

(Looking in direction of increasing station)



FIELD CUTTING DIAGRAM

Order v₁(E) bars full length. Cut as shown and use remainder of bars in opposite face.



DETAIL OF REINFORCEMENT FOR METAL SHELLS AT ABUTMENTS

The cost of Reinforcement is included with furnishing piles.

BILL OF MATERIAL
(INCLUDES BOTH ABUTMENTS AND FOUR WINGS)

Bar	No.	Size	Length	Shape
h(E)	56	#5	10'-6"	
p(E)	14	#7	53'-0"	
p ₁ (E)	6	#5	49'-0"	
s(E)	92	#4	9'-5"	
u(E)	16	#5	12'-3"	
v(E)	102	#5	4'-0"	
v ₁ (E)	36	#5	7'-11"	
v ₂ (E)	102	#5	3'-7"	
Concrete Structures		Cu.Yd.	30.4	
Reinforcement Bars, Epoxy Coated		Lb.	4210	
Furnishing Metal Shell Piles 12"		Ft.	510	
Driving Piles		Ft.	510	
Test Pile Metal Shells		Each	2	
Structure Excavation		Cu.Yd.	101	
Concrete Sealer		Sq.Ft.	345	

All drainage system components shall extend to 2'-0" from the end of each wingwall except an outlet pipe shall extend until intersecting with the side slopes. The pipes shall drain into concrete headwalls. (See Article 601.05 of the Standard Specifications and Highway Standard 601101)

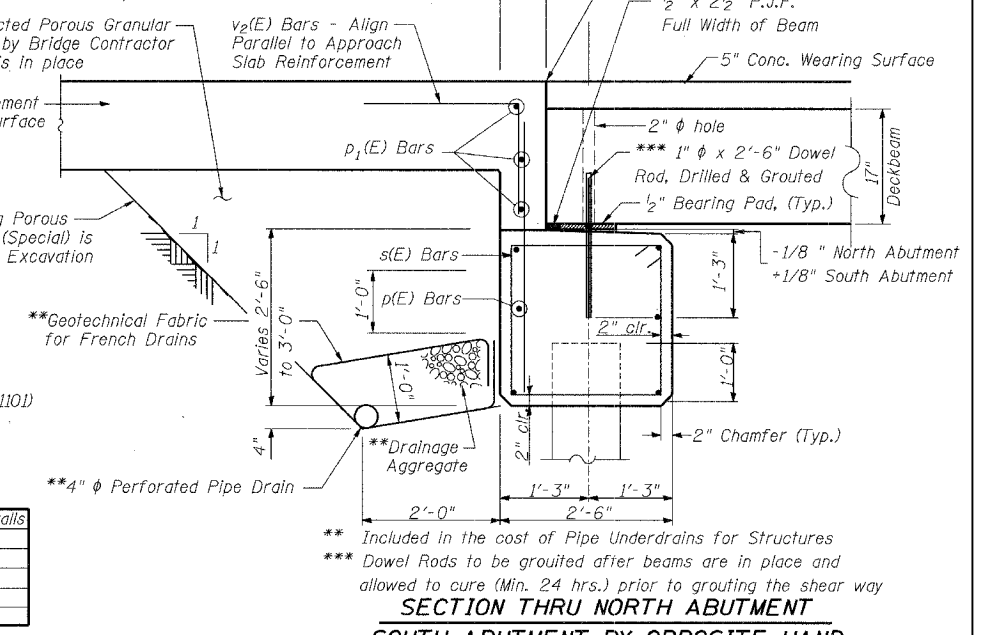
PILE DATA

Type & Size: Metal Shell - 12 in. dia x 0.250 in. walls
No. Required: 14*
Nominal Required Bearing: 270 kips
Allowable Resistance Available: 90 kips
Est. Length (S. Abut.): 47 Ft.
Est. Length (N. Abut.): 38 Ft.

*Includes one Test Pile at North Abutment and one Test Pile at South Abutment

NOTES

The metal shell piles shall be according ASTM A 252 Grade 3
When test piles are specified, the following note shall be added:
The test pile(s) shall be driven to 110% of the normal required bearing indicated in the pile data information.
Concrete Sealer shall be applied to all exposed areas of abutments.



SECTION THRU NORTH ABUTMENT SOUTH ABUTMENT BY OPPOSITE HAND

REVISIONS	
NAME	DATE

ILLINOIS DEPARTMENT OF TRANSPORTATION
ABUTMENT DETAILS
9th St. Over Kickapoo Creek
SECTION 05-00142-00-BR
CITY OF MATTOON STA. 14+95
STRUCTURE NO. 015-6339

SCALE: N.T.S. DRAWN BY ALB
DATE CHECKED BY WAB