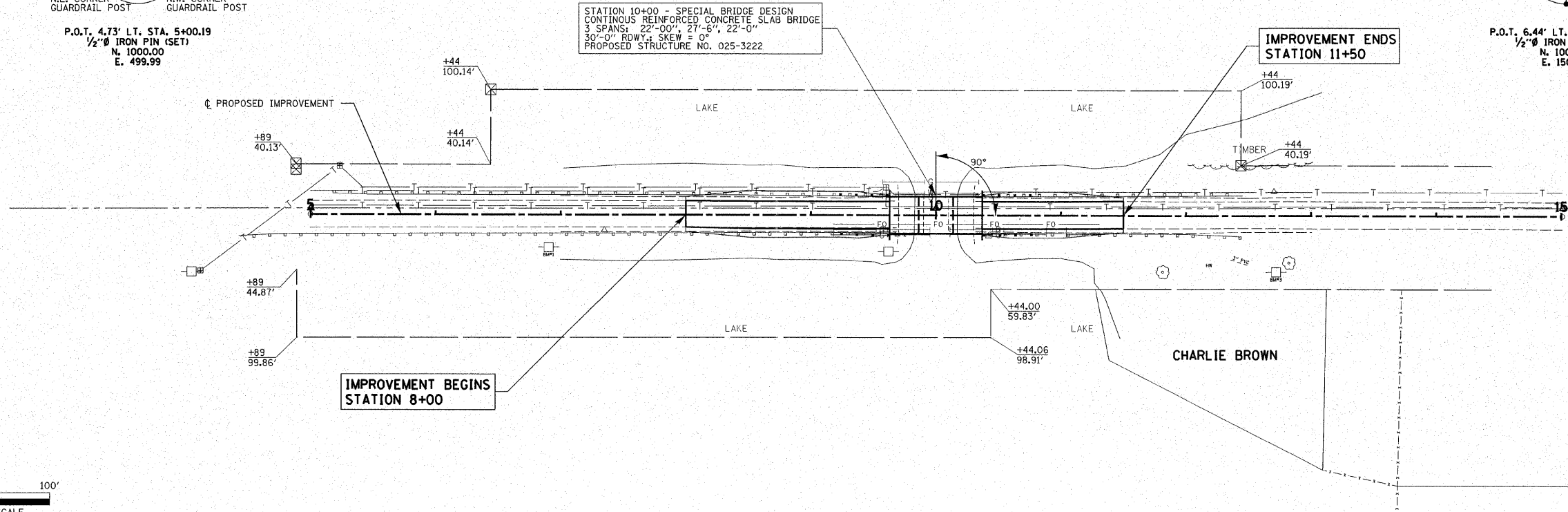
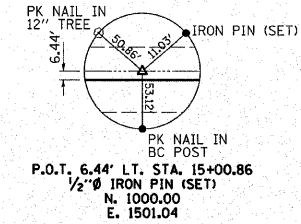
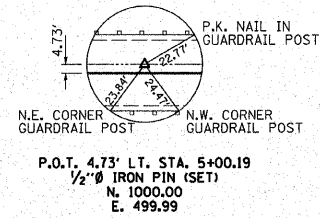


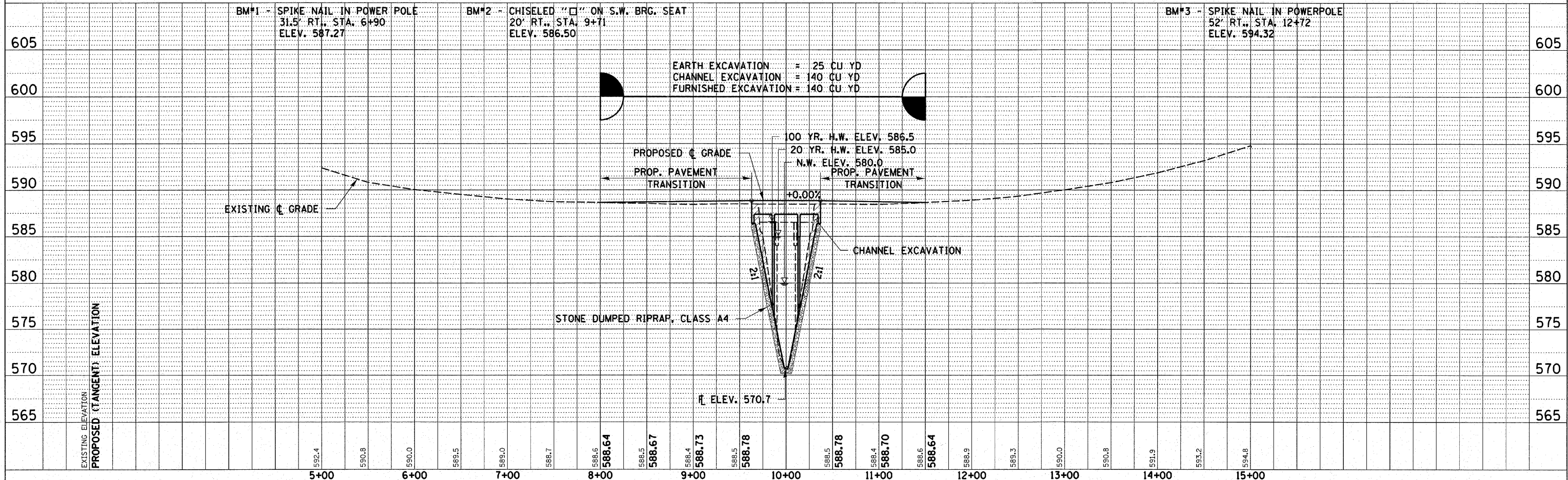
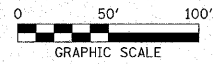
FAS	SECTION	COUNTY	TOTAL SHEETS	SHEET NO.
1706	00-00080-00-BR	EFFINGHAM	17	4
STA. 5+00		TO STA. 15+00		
FED. ROAD DIST. NO.	ILLINOIS	CONTRACT NO. 95524		



SEEDING, CLASS 2 SPECIAL
 SEEDING WILL BE DONE IN ACCORDANCE WITH THE STATE OF ILLINOIS "STANDARD SPECIFICATIONS FOR ROAD AND BRIDGE CONSTRUCTION ADOPTED JANUARY 1, 2007."
 ESTIMATED QUANTITY = SEEDING CLASS 2, SPECIAL = 0.1 ACRE

CHANNEL EXCAVATION
 THE CHANNEL SHALL BE EXCAVATED AS SHOWN IN THE PLANS WITH 2:1 SIDE SLOPES WITHIN THE LIMITS OF THE PROPOSED STRUCTURE, THEN TAPER TO THE EXISTING CHANNEL AT THE R.O.W. LINES. ONLY SUITABLE EXCAVATED MATERIAL SHALL BE USED IN THE EMBANKMENT.

EXISTING STRUCTURE NO. 025-3013
 STATION 10+00 - THREE SPAN PRECAST CONCRETE DECK BEAM BRIDGE ON CONCRETE ABUT. & PIER CAPS WITH CONCRETE ENCASED PILES, CONCRETE WINGS & CONCRETE SLOPEWALLS. BITUMINOUS SURFACE. 56.81' FC-FC, ABUTS; 29.88' o.-o. DECK
 REMOVAL OF EXISTING STRUCTURES = 1 EACH



DATE	BY	REVISION

DATE	BY	REVISION