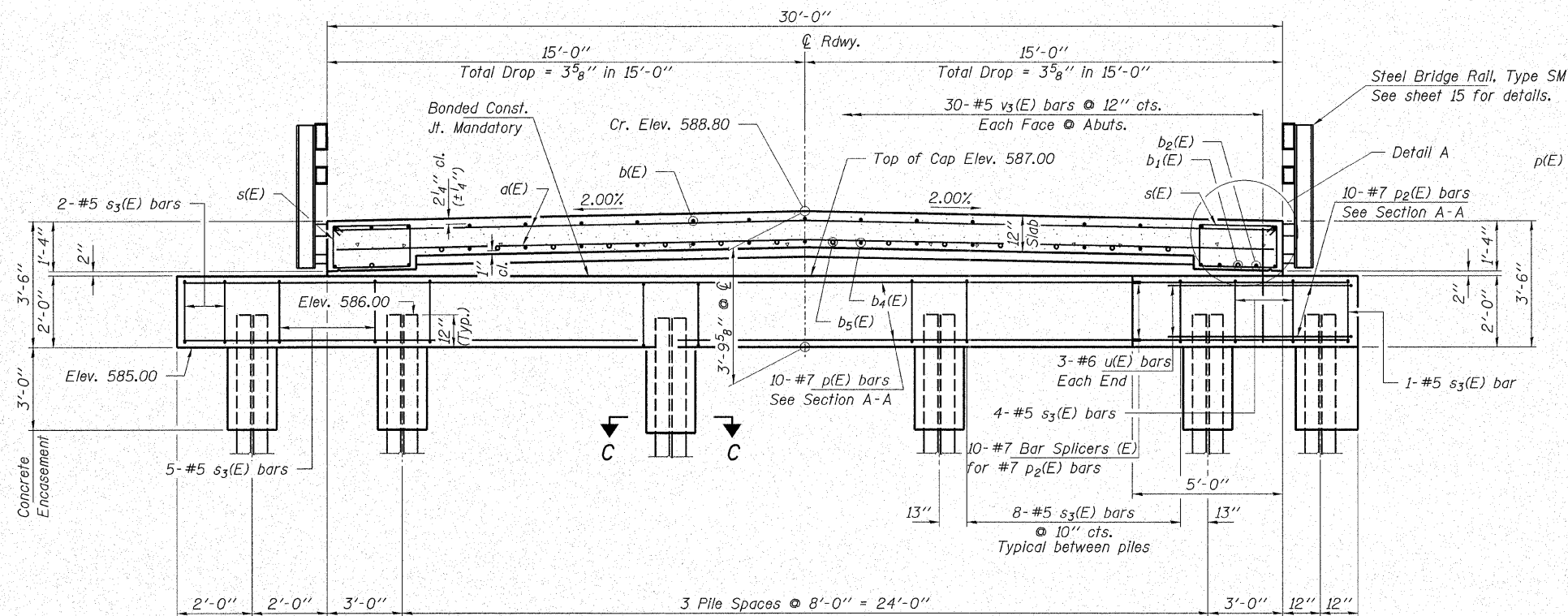
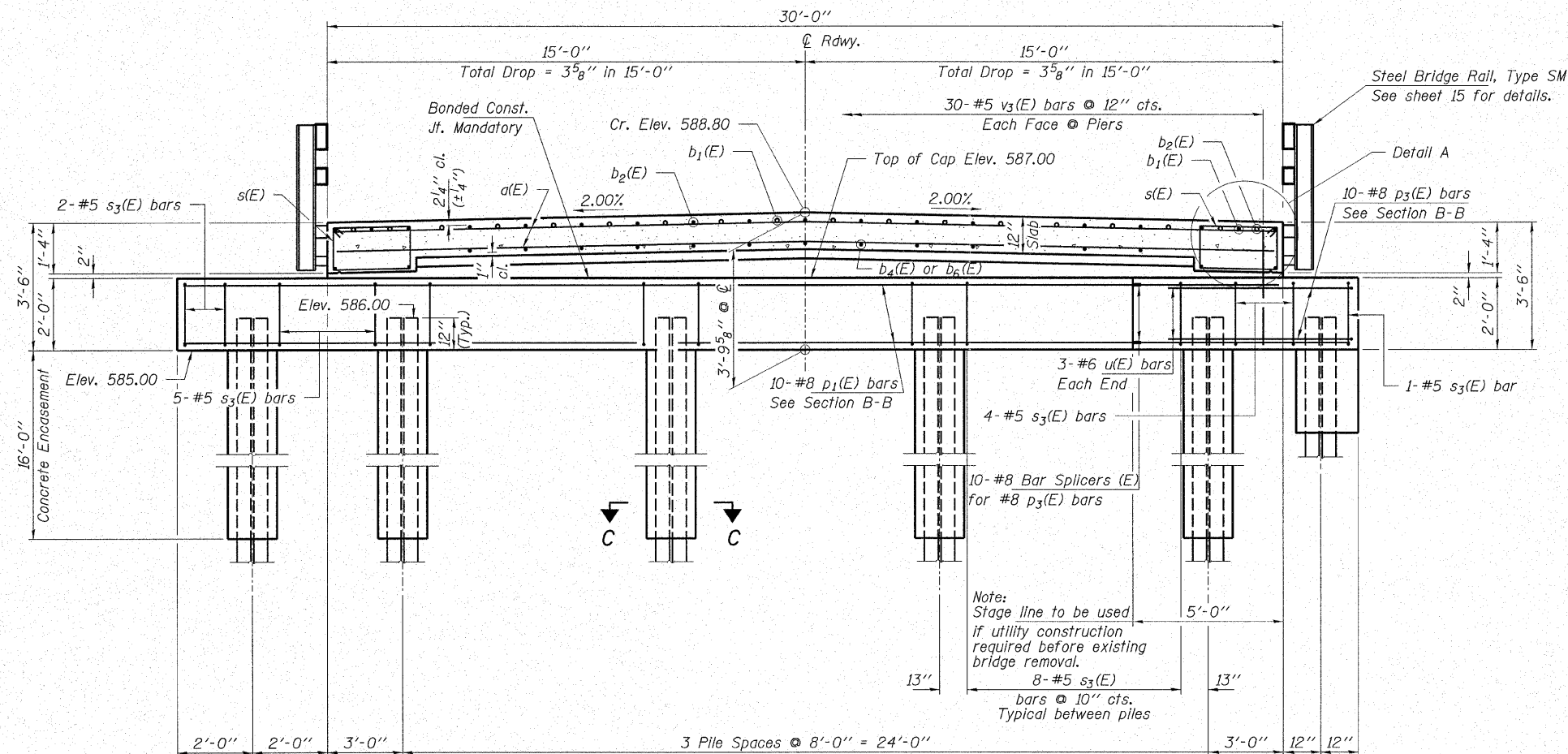


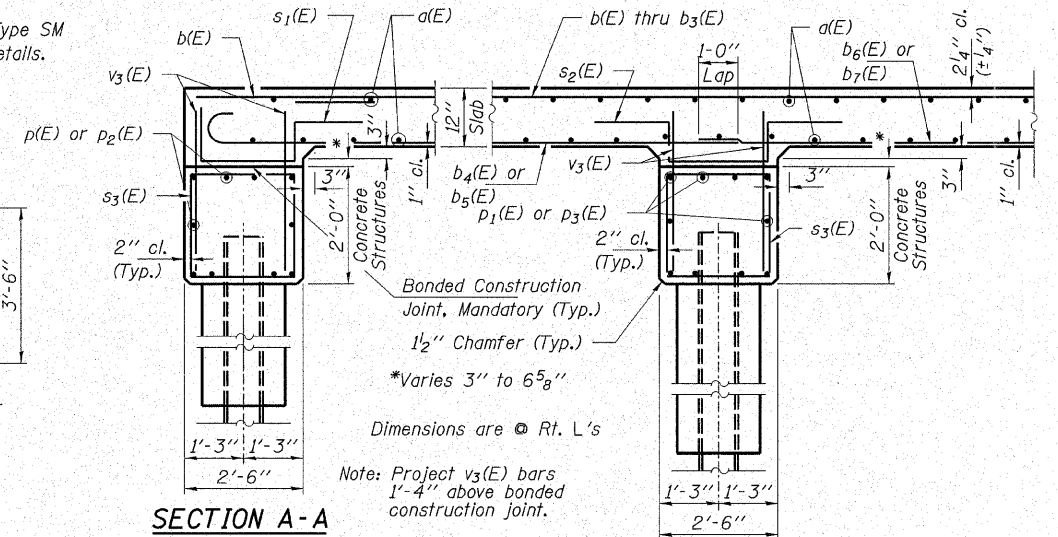
ROUTE NO. F.A.S. 1706	SECTION 00-00080 -00-BR	COUNTY EFFINGHAM	TOTAL SHEETS 17	SHEET NO. 14
FED. ROAD DIST. NO.		ILLINOIS CONTRACT NO. 95524		



CROSS SECTION NEAR ABUTMENTS
(Looking East)

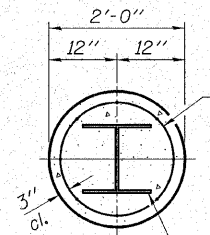


CROSS SECTION AT PIERS
(Looking East)



SECTION A-A

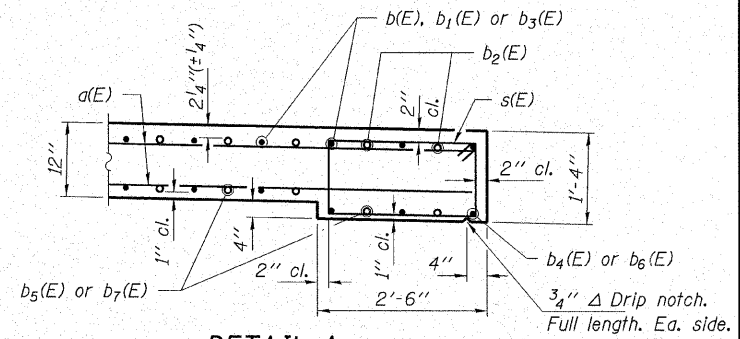
SECTION B-B



SECTION C-C

Welded wire fabric
6 x 6-W4.0 x W4.0
weighing 58#/100 sq. ft.
The cost of Excavation and
Reinforcement is included
in the cost of Concrete
Encasement. Forms for
Encasement may be omitted
when soil conditions will permit.

Steel Pile HP10x42



DETAIL A

PILE DATA

Type and Size	Steel HP10x42
No. Req'd.	*24
Allowable Resistance Available	52 Kips/Pile @ Abuts. 100 Kips/Pile @ Piers
Nominal Req'd Bearing	156 Kips/Pile @ Abuts. 300 Kips/Pile @ Piers
Est. Lengths	30 Ft./Pile @ Abuts. 40 Ft./Pile @ Pier 1 50 Ft./Pile @ Pier 2

Notes: The Steel H-Piles shall be according to AASHTO M270 Grade 50.

The test piles shall be driven to 110 percent of the Nominal Required Bearing indicated in the pile data information

*Includes two test piles to be driven in permanent locations, one at the West Abutment and one at Pier 2.

HAMPTON, LENZINI & RENWICK, INC.
CIVIL & STRUCTURAL ENGINEERS
LAND SURVEYORS
3085 STEVENSON DRIVE, SUITE 201
SPRINGFIELD, ILLINOIS 62703
(217) 546-3400

ELGIN • SPRINGFIELD

PROJECT NUMBER: 12-33-0004-1 DATE: 11/07/07
DESIGNED: R.J.P. CHECKED: S.W.M. DRAWN: D.A.B.

SUPERSTRUCTURE DETAILS
F.A.S. 1706 / C.H. 6 OVER LAKE SARA
SECTION 00-00080-00-BR
EFFINGHAM COUNTY
STRUCTURE NO. 025-3222 / STATION 10+00