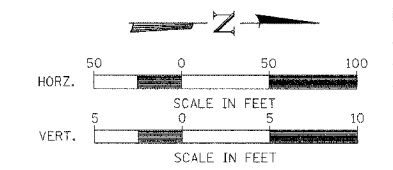
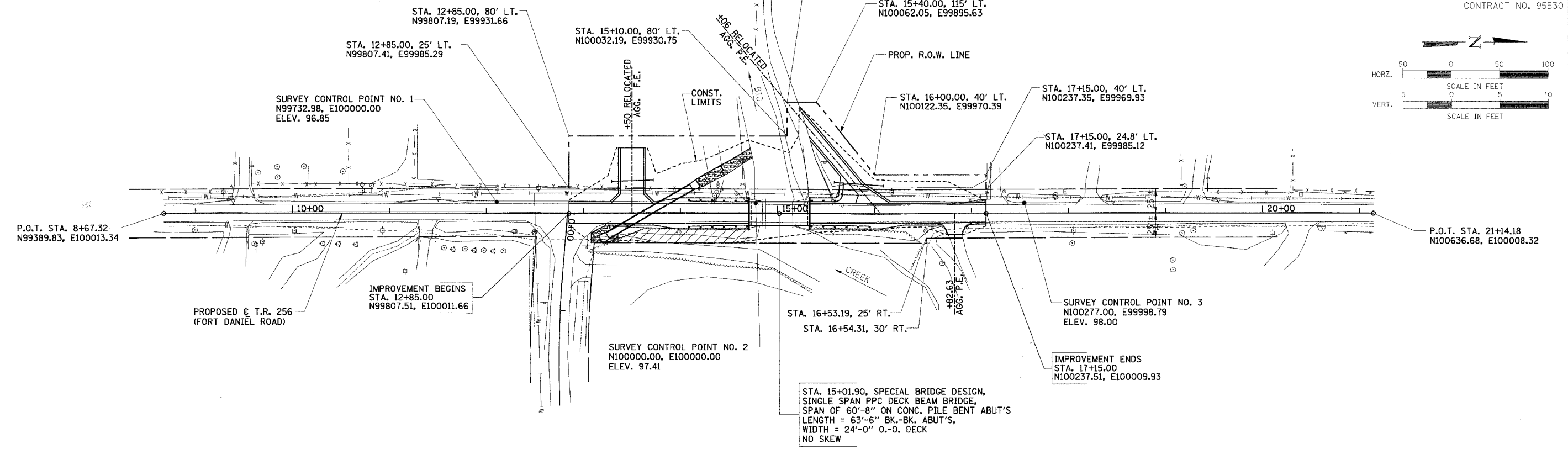


RTE.	SECTION	COUNTY	TOTAL SHEETS	SHEET NO.
T.R. 256	06-11116-00-BR	MACON	14	4
STA. 8+67.32		TO STA. 21+14.18		
FED. ROAD DIST. NO.	ILLINOIS	PROJECT:	BROS-151631	
CONTRACT NO. 95530				



NOTE:  
FOR TIE POINTS & BENCHMARK LOCATION, SEE SHEET 3 OF 14.



SHOULDER WIDENING FOR GUARDRAIL TERMINALS

- |                                |                          |
|--------------------------------|--------------------------|
| ① STA. 13+73.7, 12' RT. & LT.  | ④ STA. 15+33.65, 16' RT. |
| ② STA. 13+97.7, 16' RT. & LT.  | ⑤ STA. 16+06.0, 16' RT.  |
| ③ STA. 14+70.15, 16' RT. & LT. | ⑥ STA. 16+30.0, 12' RT.  |

PROPOSED STRUCTURE LAYOUT

<u>SOUTH ABUTMENT</u>	<u>NORTH ABUTMENT</u>
BK. OF S. ABUT. STA. 14+70.15 N99992.66, E100010.91	BK. OF N. ABUT. STA. 15+33.65 N100056.16, E100010.66
☐ S. ABUT. STA. 14+71.40 N99993.91, E100010.91	☐ N. ABUT. STA. 15+32.40 N100054.91, E100010.66
FRONT FACE OF S. ABUT. STA. 14+72.65 N99995.16, E100010.90	FRONT FACE OF N. ABUT. STA. 15+31.15 N100053.66, E100010.67

HORIZONTAL LAYOUT

PLAN	DATE	BY
SURVEYED		
ALIGNED		
CHECKED		
BY		
DATE		
NO.		

PROFILE	DATE	BY
DRAWN		
CHECKED		
BY		
DATE		
NO.		