

STATE OF ILLINOIS
DEPARTMENT OF TRANSPORTATION

PLANS FOR PROPOSED
HIGHWAY BRIDGE PROGRAM

TR 254 OVER LITTLE CREEK
SECTION 06-12121-00-BR
FAYETTE COUNTY
PROJECT NO. BROS-051(78)
C-97-012-08

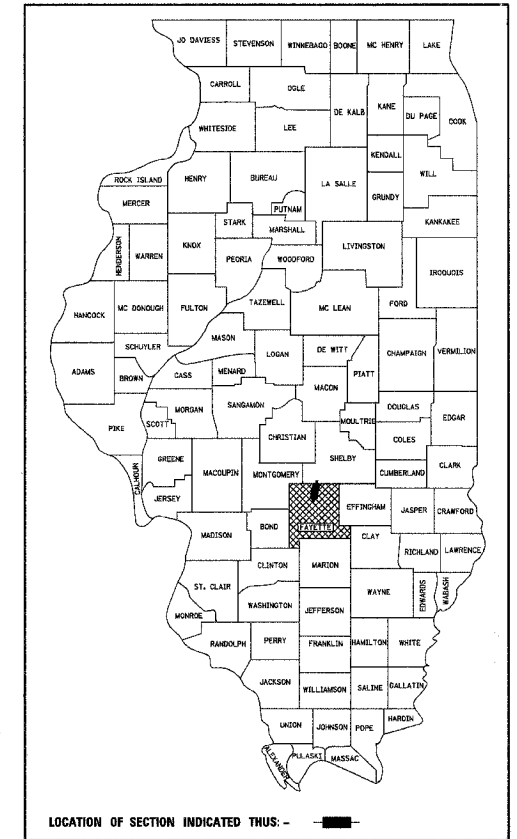
ROUTE	SECTION	COUNTY	TOTAL SHEETS	SHEET NO.
TR 254	06-12121-00-BR	FAYETTE	10	1
FED. ROAD DIST. NO. 7		ILLINOIS	FEDERAL AID PROJECT	
CONTRACT NO. 95531				

INDEX OF SHEETS

- COVER SHEET
- SUMMARY OF QUANTITIES AND TYPICAL SECTIONS
- PLAN AND PROFILE OF ROADWAY
- CROSS SECTIONS OF ROADWAY
- GENERAL PLAN AND ELEVATION
- 6.-7. PRECAST PRESTRESSED CONCRETE DECK BEAM DETAILS
- STEEL RAILING, TYPE S1 DETAILS
- ABUTMENT DETAILS
- PIER DETAILS

STANDARDS ARE INCLUDED IN PLANS AFTER SHEET NO. 10
000001-05 STANDARD SYMBOLS, ABBREVIATIONS AND PATTERNS
515001-02 NAME PLATE FOR BRIDGES
635006-02 REFLECTOR AND TERMINAL MARKER PLACEMENT
701901 TRAFFIC CONTROL DEVICES
BLR 21-7 TYPICAL APPLICATION OF TRAFFIC CONTROL DEVICES FOR CONSTRUCTION ON RURAL LOCAL HIGHWAYS

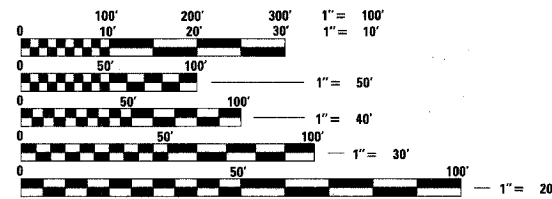
SOIL BORINGS (SEE SPECIFICATIONS)



LOCATION OF SECTION INDICATED THUS: -

FAYETTE COUNTY HIGHWAY DEPARTMENT	
APPROVED	11-2, 20 07 <i>Michael A. Maly</i> FAYETTE COUNTY, COUNTY ENGINEER
PASSED	11-7, 20 07 <i>Manner D. Knapp</i> DISTRICT SEVEN ENGINEER OF LOCAL ROADS, & STREETS
RELEASING FOR BID BASED ON LIMITED REVIEW	11-7, 20 07 <i>Christie M. Reed</i> DEPUTY DIRECTOR OF HIGHWAYS, REGION FOUR ENGINEER

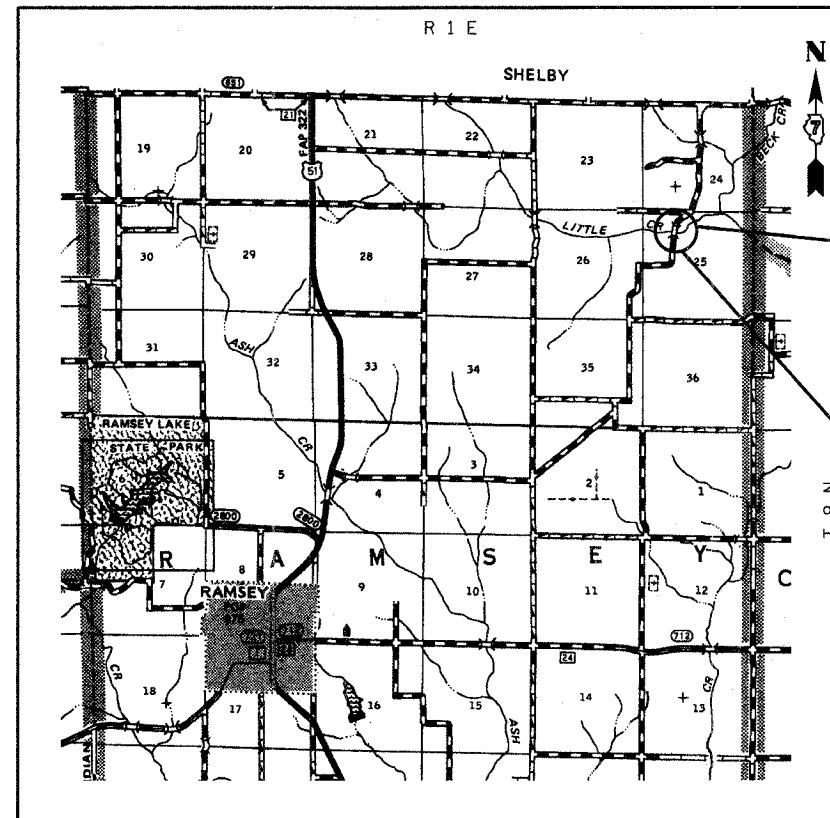
DESIGN CLASSIFICATION: RURAL LOCAL ROAD
ADT₂₀₀₇ : 50
ADT₂₀₂₇ : 75
DESIGN SPEED - 30 MPH



FULL SIZE PLANS HAVE BEEN PREPARED USING STANDARD ENGINEERING SCALES, REDUCED SIZED PLANS WILL NOT CONFORM TO STANDARD SCALES, IN MAKING MEASUREMENTS ON REDUCED PLANS, THE ABOVE SCALES MAY BE USED.

J.U.L.I.E.
JOINT UTILITY LOCATING INFORMATION FOR EXCAVATORS
1-800-892-0123 Website: <http://www.illinois1call.com>

CONTRACT NO. 95531



SECTION BEGINS
STA. 9+23.67

SECTION 06-12121-00-BR
INCLUDES THE CONSTRUCTION OF A THREE SPAN PRECAST PRESTRESSED CONCRETE DECK BEAM BRIDGE CARRYING TR 254 OVER LITTLE CREEK, 102'-8" BK TO BK ABUTMENTS, NO SKEW, EXISTING STRUCTURE NO. 026-3105 PROPOSED STRUCTURE NO. 026-3436

SECTION ENDS
STA. 10+76.33

LOCATION: NEAR THE SW CORNER, NE 1/4, NW 1/4, SECTION 25, T9N, R1E, 3RD P.M.
NET LENGTH OF PROJECT: 152.66 FT = 0.029 MI



Gary L. Hahn 10-31-07
GARY L. HAHN
CENTRALIA, ILLINOIS
ILLINOIS LICENSED PROFESSIONAL
ENGINEER NO. 62-42606
EXPIRES NOV. 30, 2009