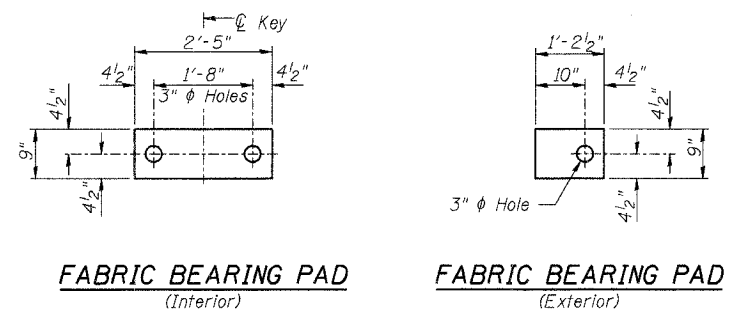
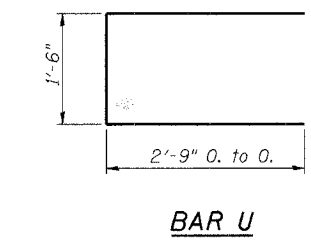


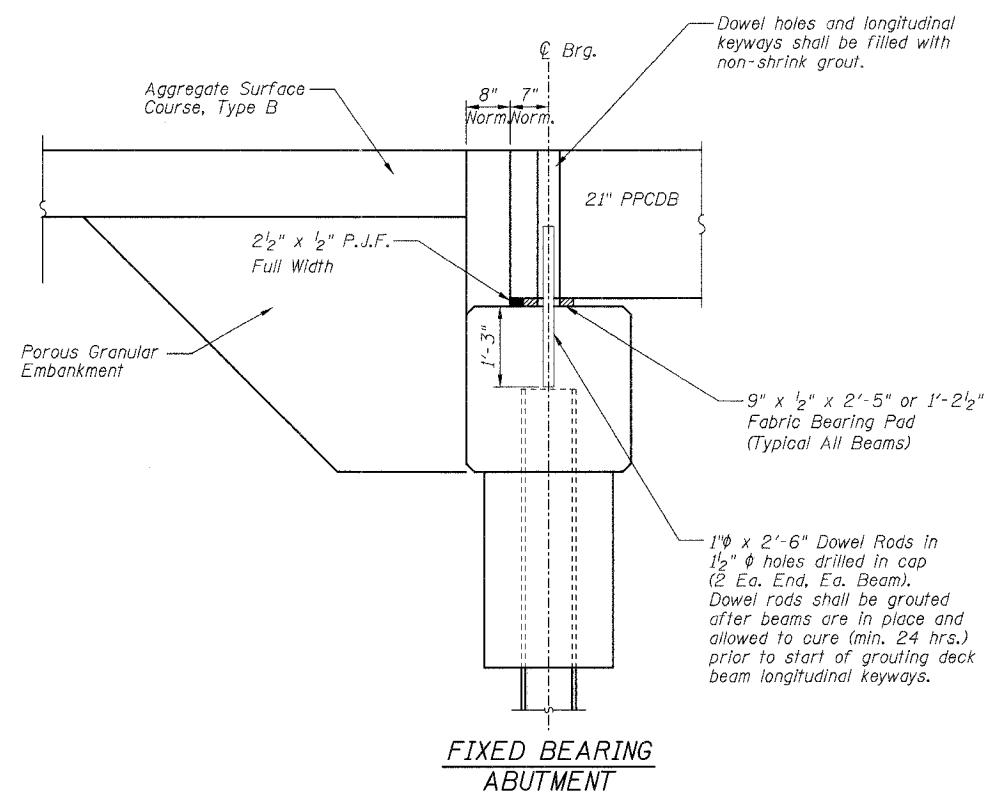
ROUTE	SECTION	COUNTY	TOTAL SHEETS	SHEET NO.
TR 254	06-12121-00-BR	FAYETTE	10	6
FED. ROAD DIST. NO. 7		ILLINOIS	FEDERAL AID PROJECT	
CONTRACT NO. 95531				



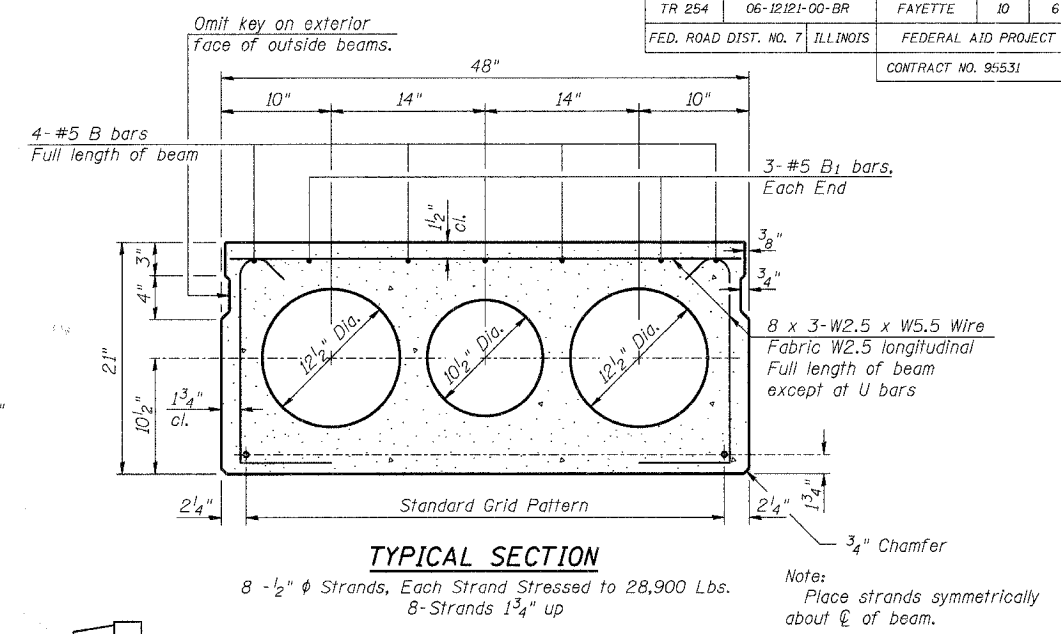
FABRIC BEARING PAD (Interior)
FABRIC BEARING PAD (Exterior)



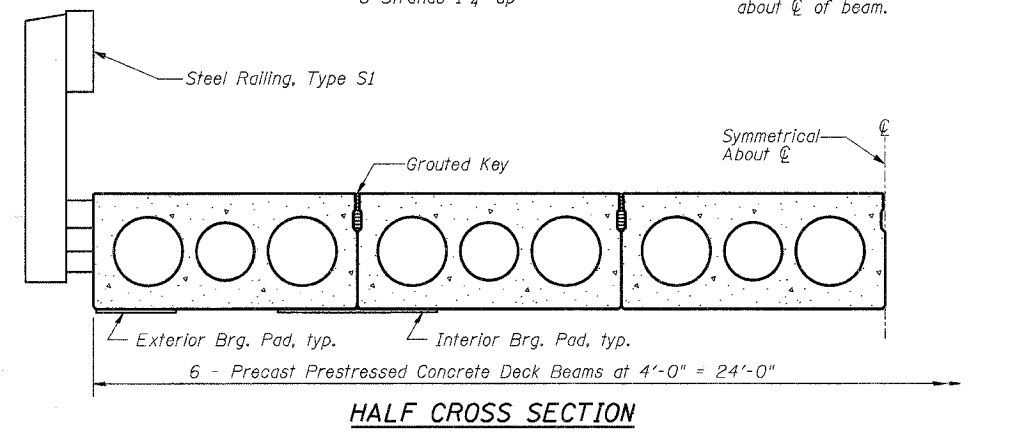
BAR U



FIXED BEARING ABUTMENT



TYPICAL SECTION



HALF CROSS SECTION

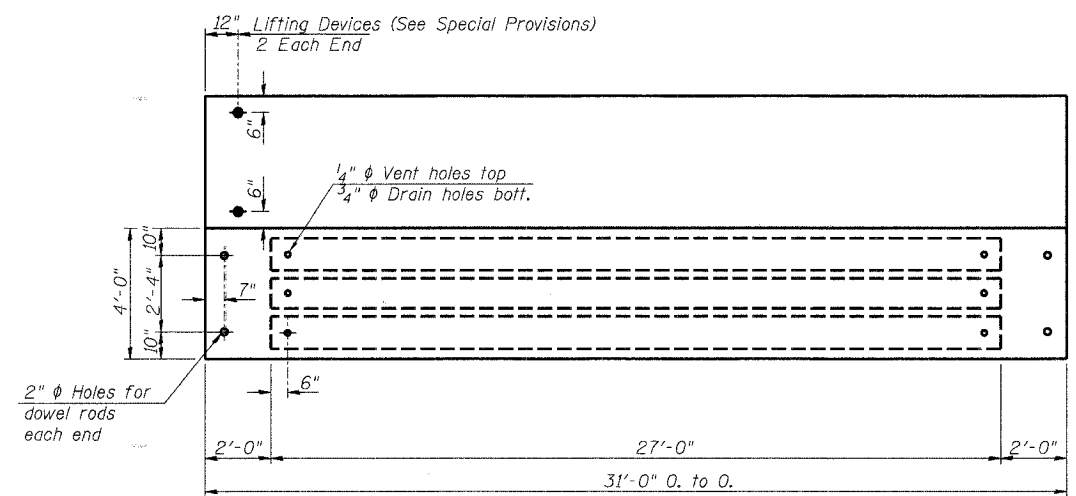
BILL OF MATERIAL FOR ONE BEAM

Bar	No.	Size	Length	Shape
B	4	#5	30'-8"	—
B1	6	#5	6'-3"	—
U	16	#4	7'-0"	U
Precast Prestressed Conc. Deck Bms.		Sq. Ft.	124	
Reinforcement Bars		Pound	240	
Total Weight Each Beam		Pound	23240	

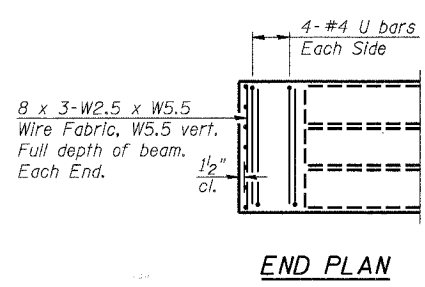
SPAN 1 OR 3

PRECAST PRESTRESSED CONCRETE DECK BEAM DETAILS
PROPOSED BRIDGE OVER LITTLE CREEK
TR 254
SECTION 06-12121-00-BR
FAYETTE COUNTY, ILLINOIS

Sheet 6 of 10
Job No. 50506



PLAN



END PLAN

NOTES

- Prestressing steel shall be uncoated high strength, stress-relieved 7-wire strand, Grade 270.
- The nominal diameter shall be 1/2" and the nominal cross-sectional area shall be 0.153 sq. in.
- See Special Provisions for lifting devices.
- Corrosion Inhibitor, per Article 1020.05(b)(12) of the Standard Specifications, shall be used in the concrete for precast prestressed concrete deck beams.
- Non prestressing steel shall conform to ASTM A706 (IL MOD), Grade 60.
- The bearing seat surfaces shall be adjusted by shimming to assure firm and even bearing. Two 1/8" fabric adjusting shims of the dimensions of the Exterior Bearing Pad shall be provided for each bearing.
- Keyway surfaces shall be cleaned to remove form oil or other bond breaking material prior to shipment of the beams. Cleaning shall be done by sandblasting the keyway areas between top of the beam and the bottom edge of the key.
- Required Release Strength, f'ci, shall be 4000 p.s.i.
- An equal substitution of the low-relaxation strands for the stress-relieved strands will be permitted. However, all strands shall be stressed to a maximum of 28,900 pounds per strand.

10/31/2007