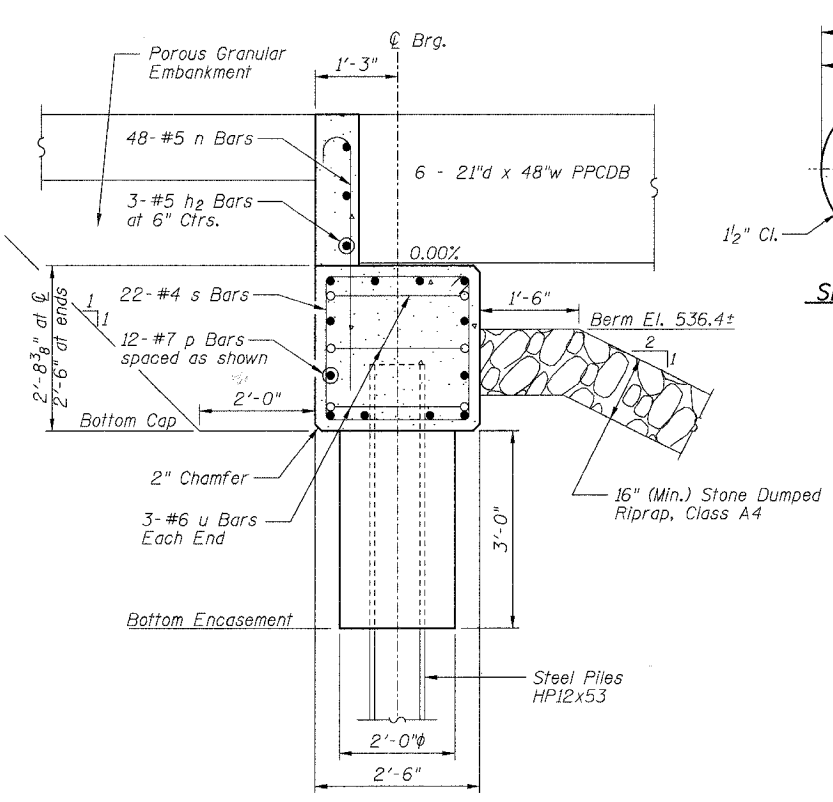
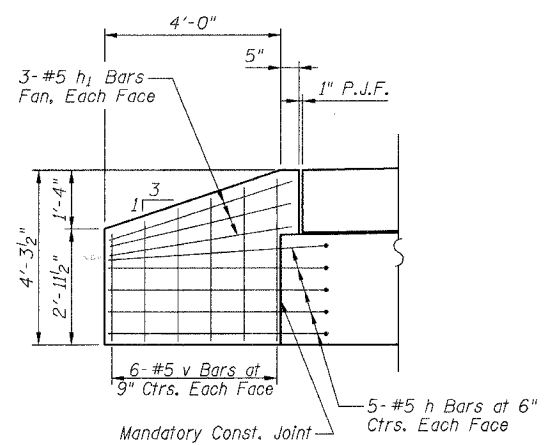


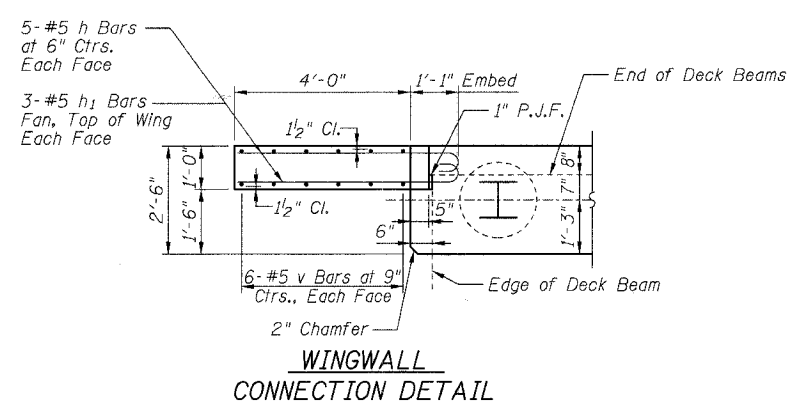
ROUTE	SECTION	COUNTY	TOTAL SHEETS	SHEET NO.
TR 254	06-12121-00-BR	FAYETTE	10	9
FED. ROAD DIST. NO. 7	ILLINOIS	FEDERAL AID PROJECT		
CONTRACT NO. 95531				



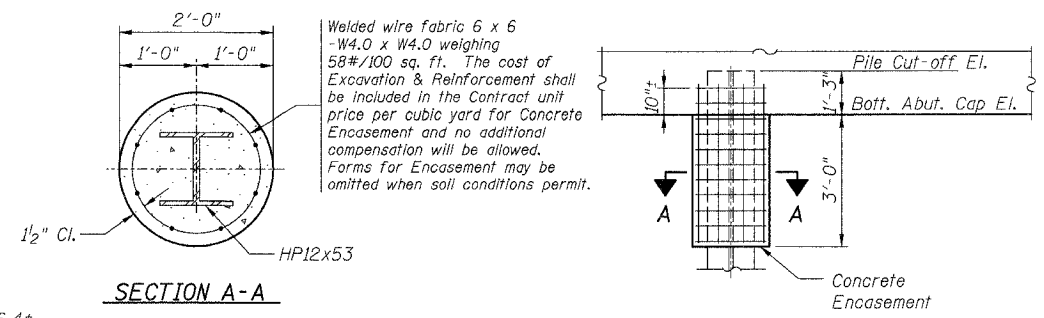
SECTION THRU ABUTMENT



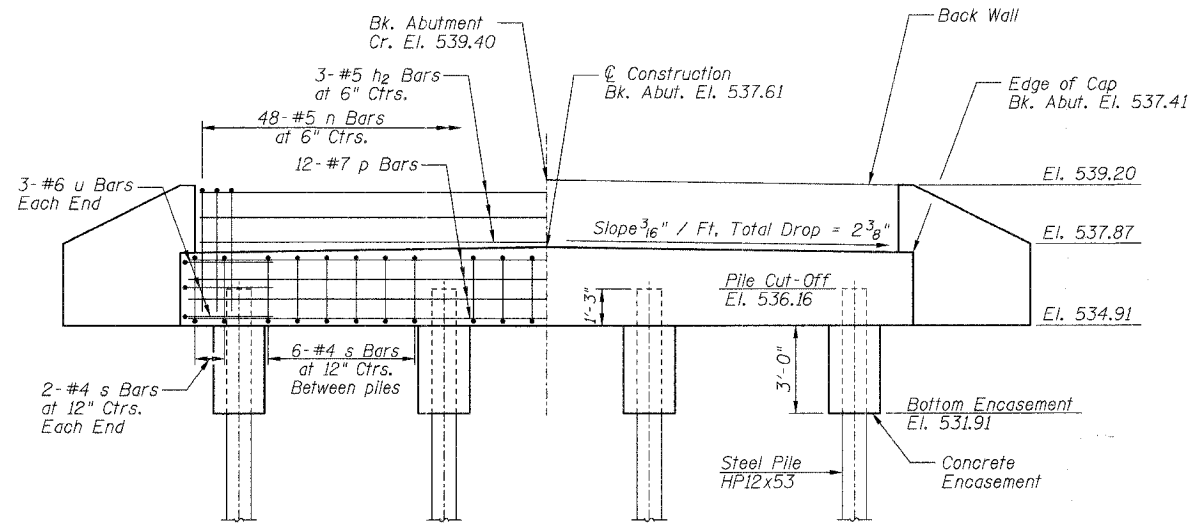
ELEVATION OF WINGWALL



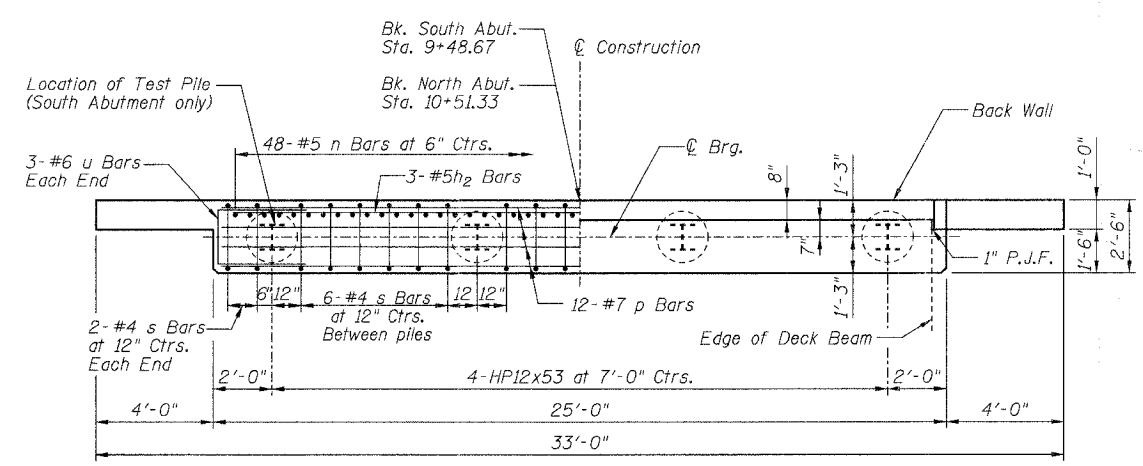
WINGWALL CONNECTION DETAIL



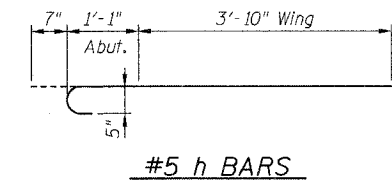
PILE ENCASEMENT DETAIL



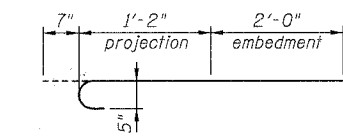
ELEVATION



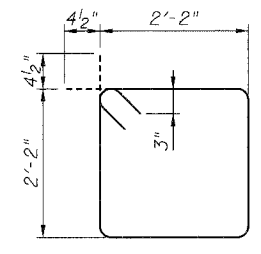
PLAN



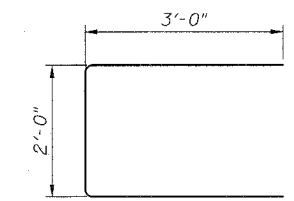
#5 h BARS



#5 n BARS



#4 s BARS



#6 u BARS

BILL OF MATERIALS
ONE ABUTMENT w/ WINGWALLS

Bar	No.	Size	Length	Shape
h	20	#5	5'-6"	
h1	12	#5	4'-6"	
h2	3	#5	23'-8"	
n	48	#5	3'-9"	
p	12	#7	24'-8"	
s	22	#4	9'-5"	
u	6	#6	8'-0"	
v	24	#5	4'-0"	CUT IN FIELD
Concrete Structures			Cu Yd	8.3
Concrete Encasement			Cu Yd	1.4
Reinforcement Bars			Pound	1340

PILE DATA

Type and Size: Steel HP12x53
 Nominal Required Bearing: 419 kips
 Allowable Resistance Available: 139 kips
 Estimated Length:
 South Abutment: 65 Foot
 North Abutment: 65 Foot
 Number of Production Piles:
 South Abutment: 3 Each
 North Abutment: 4 Each
 Number of Test Piles:
 South Abutment: 1 Each
 North Abutment: None

GENERAL NOTES

All exposed edges shall have standard 3/4" chamfer, unless otherwise noted.
 All clearances between rebar and form surface shall be 2", unless otherwise noted.
 Space reinforcement in cap to miss PPCDB dowel rods.
 The Steel H-piles shall be according to AASHTO M270 Grade 50.

ABUTMENT DETAILS
PROPOSED BRIDGE OVER
LITTLE CREEK
 TR 254
 SECTION 06-12121-00-BR
 FAYETTE COUNTY, ILLINOIS

10/31/2007