



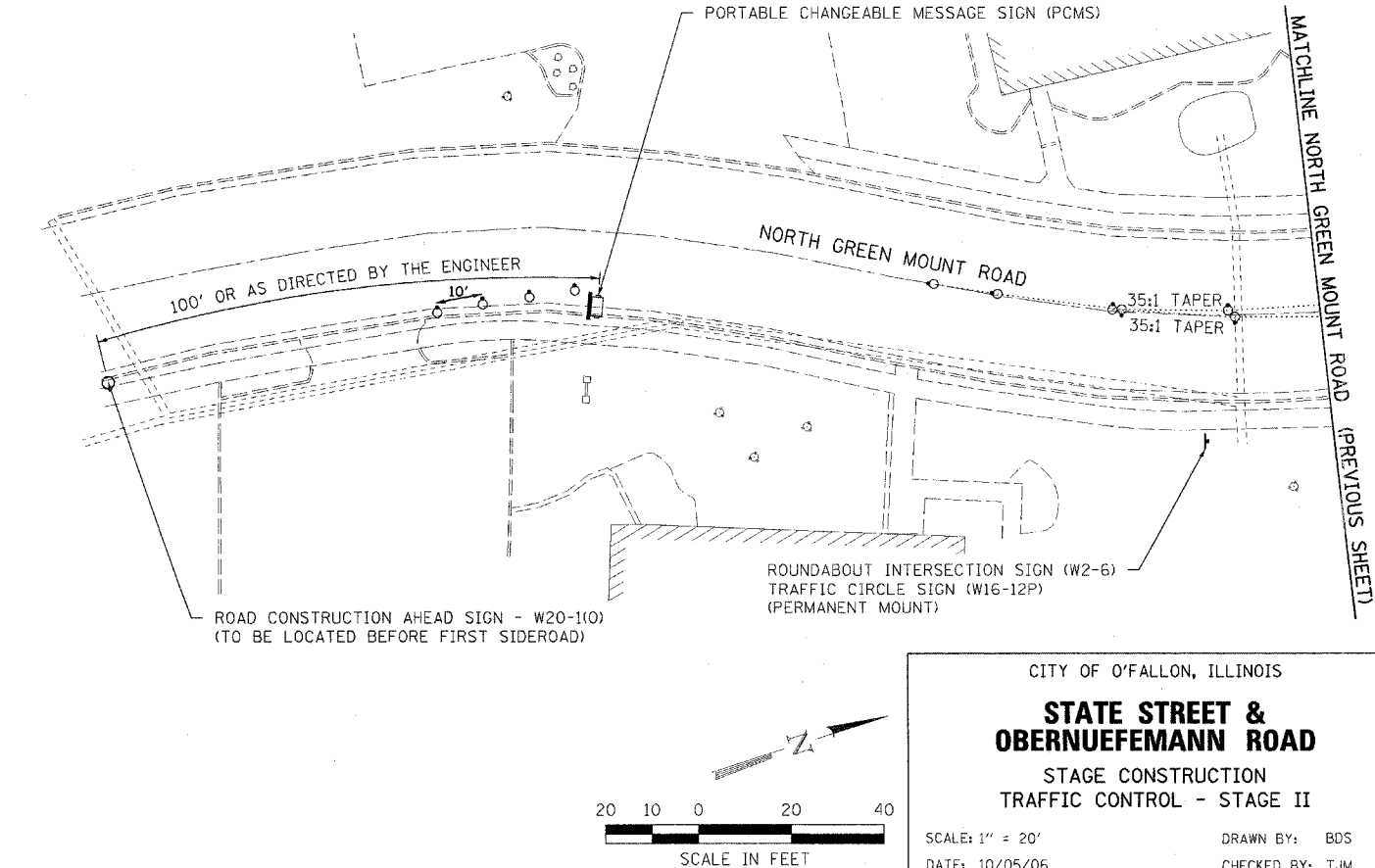
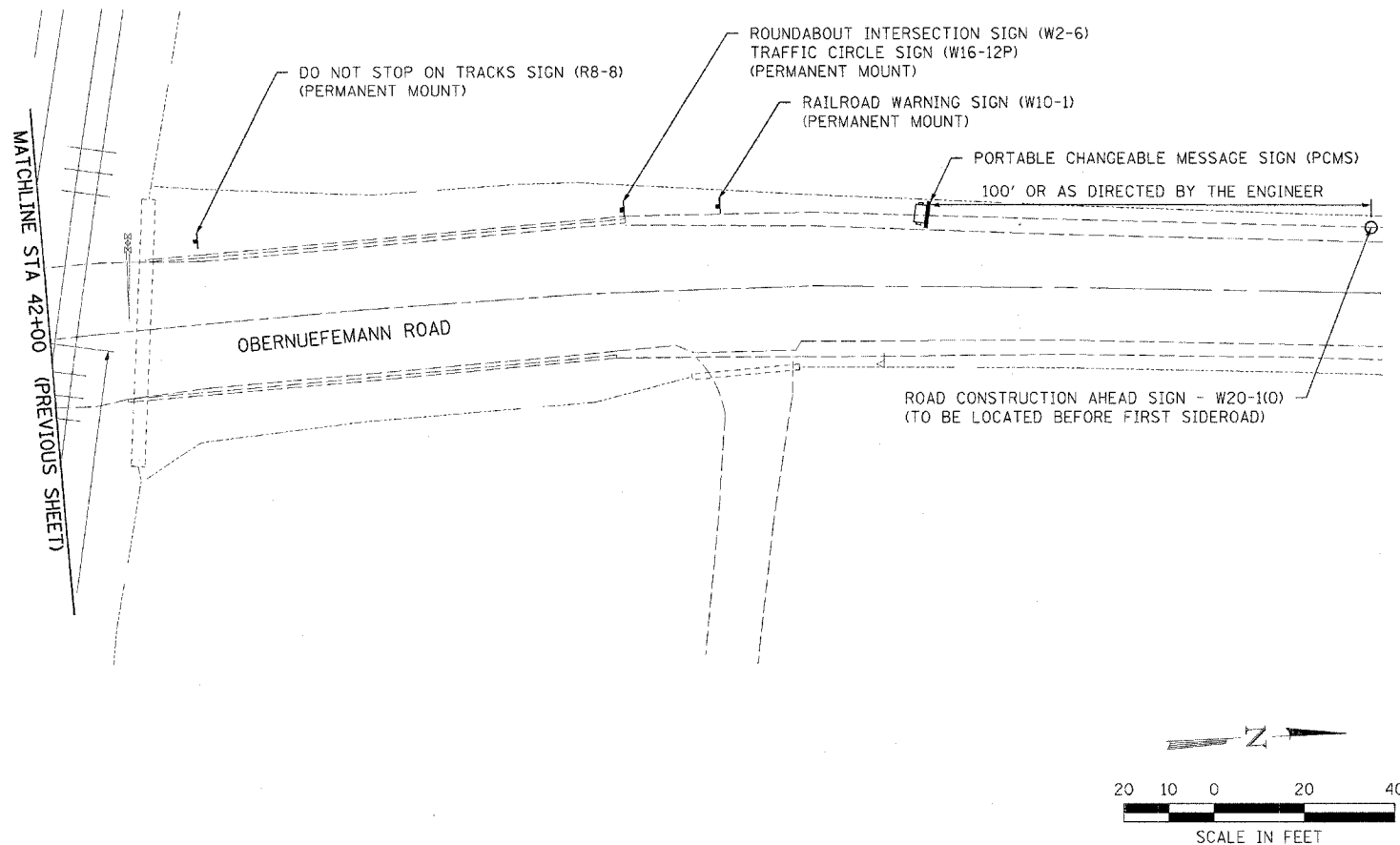
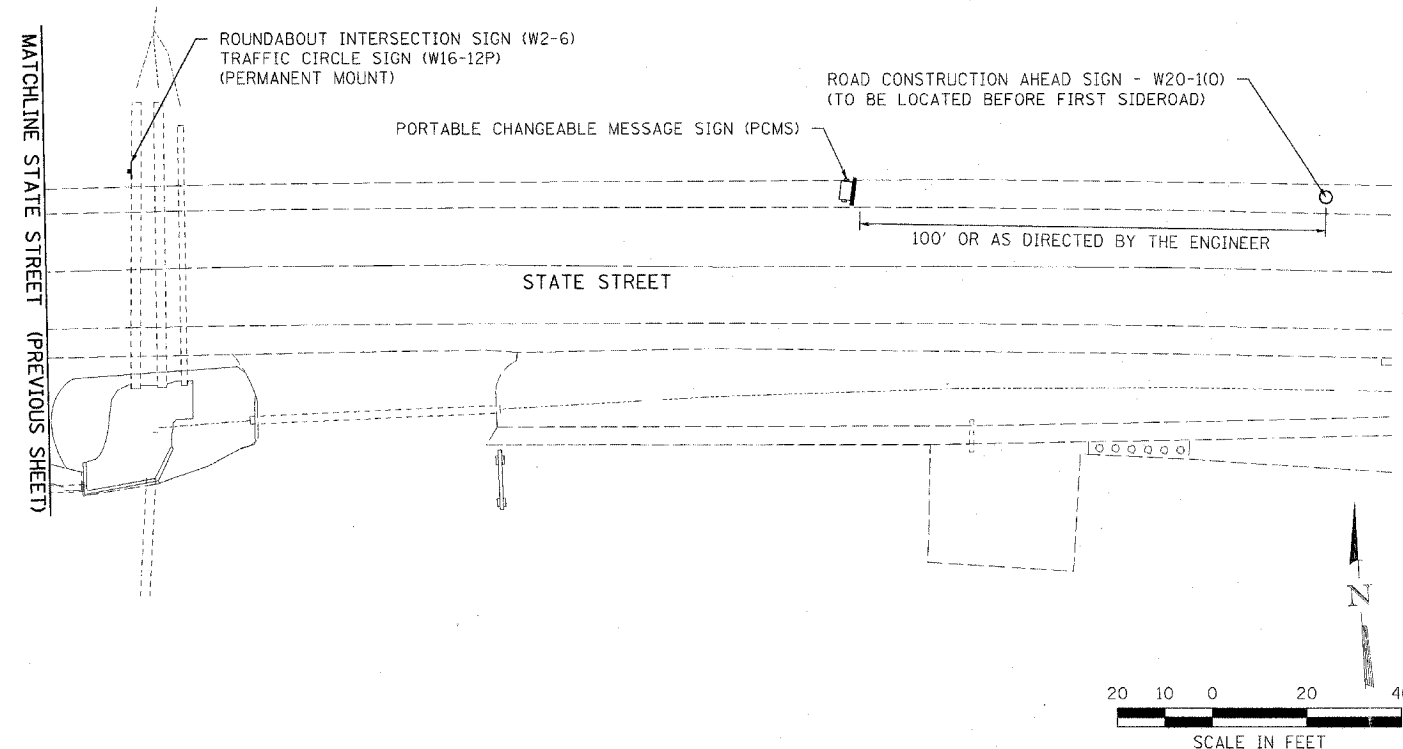
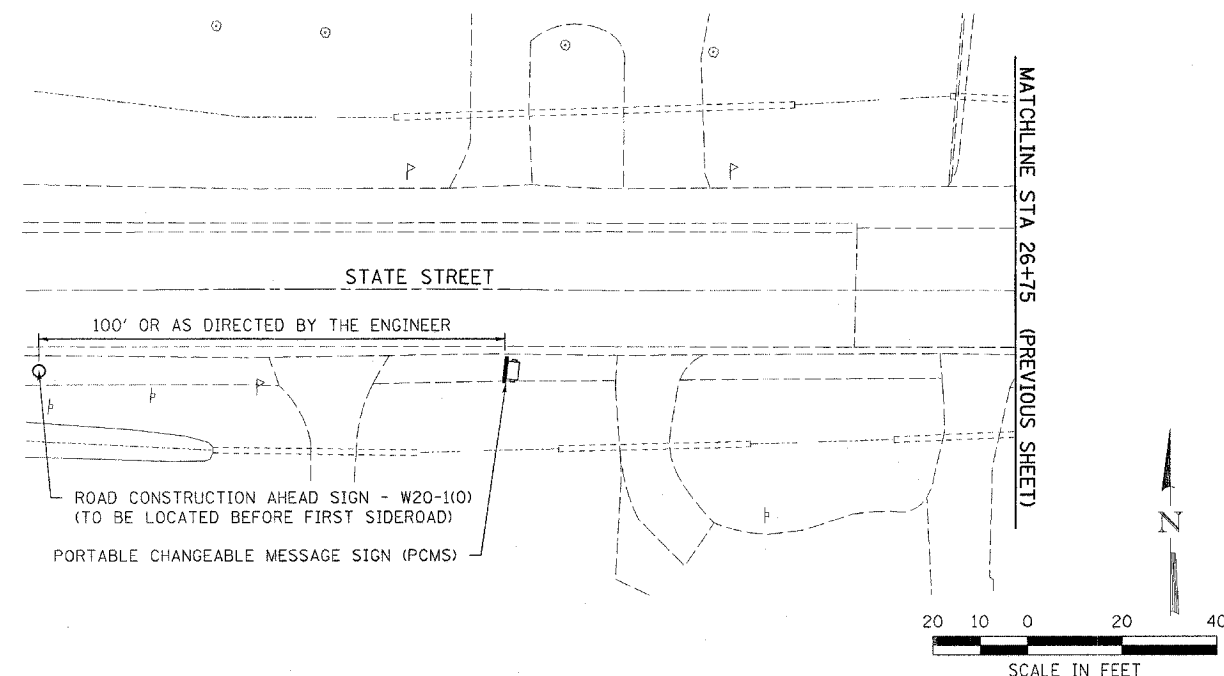


LEGEND

-  WORK AREA
-  BARREL WITH STEADY BURN LIGHT
-  TEMPORARY TRAFFIC CONTROL SIGN(S)
(OF TYPE(S) SPECIFIED)
-  PORTABLE CHANGEABLE MESSAGE SIGN



CITY OF O'FALLON, ILLINOIS
STATE STREET & OBERNUEFEMANN ROAD
 STAGE CONSTRUCTION
 TRAFFIC CONTROL - STAGE II
 SCALE: 1" = 20'
 DATE: 10/05/06
 DRAWN BY: BDS
 CHECKED BY: TJM

Plotted By: koldendorph
 File Name: I:\05046\00\Construction\Plans\AS\Stage2_Sheet2.dgn
 Plot Date: 10/27/2006
 Plot Time: 11:24:42 AM