

SUMMARY OF QUANTITIES

F.A.S. ROUTE NO.	SECTION	COUNTY	TOTAL SHEETS	SHEET NO.
N/A	06-00126-06-SP	ST. CLAIR	15	2
STA. 10+85.00		TO STA. 22+11.90		
FEDERAL AID PROJECT		CONTRACT 97319		

CODE NO.	ITEM	UNIT	QUANTITY	CONSTRUCTION CODE FOOO - 2A
20200100	EARTH EXCAVATION	CU YD	2950	2950
25000200	SEEDING, CLASS 2	ACRE	2.1	2.1
25000400	NITROGEN FERTILIZER NUTRIENT	POUND	189	189
25000500	PHOSPHORUS FERTILIZER NUTRIENT	POUND	189	189
25000600	POTASSIUM FERTILIZER NUTRIENT	POUND	189	189
25100115	MULCH, METHOD 2	ACRE	2.1	2.1
28000250	TEMPORARY EROSION CONTROL SEEDING	POUND	100	100
28000300	TEMPORARY DITCH CHECKS	EACH	15	15
28000400	PERIMETER EROSION BARRIER	FOOT	450	450
35100500	AGGREGATE BASE COURSE, TYPE A, 6"	SQ YD	133	133
35101100	AGGREGATE BASE COURSE, TYPE A, 12"	SQ YD	3859	3859
40201000	AGGREGATE FOR TEMPORARY ACCESS	TON	50	50
40300100	BITUMINOUS MATERIALS (PRIME COAT)	GALLON	1351	1351
40300300	BITUMINOUS MATERIALS (COVER AND SEAL COATS)	GALLON	2315	2315
40300500	COVER COAT AGGREGATE	TON	49	49
40300600	SEAL COAT AGGREGATE	TON	49	49
40600300	AGGREGATE (PRIME COAT)	TON	10	10
44000100	PAVEMENT REMOVAL	SQ YD	4344	4344
50105210	REMOVE EXISTING CULVERTS	FOOT	103	103
54200220	PIPE CULVERTS, CLASS D, TYPE 1 15"	FOOT	139	139
67100100	MOBILIZATION	L SUM	1	1
70101700	TRAFFIC CONTROL AND PROTECTION	L SUM	1	1
72000100	SIGN PANEL - TYPE 1	SQ FT	25.5	25.5
72400310	REMOVE SIGN PANEL - TYPE 1	SQ FT	12.5	12.5
72400710	RELOCATE SIGN PANEL - TYPE 1	SQ FT	12.5	12.5
72900100	METAL POST - TYPE A	FOOT	59	59

* SPECIALTY ITEMS

GENERAL NOTES

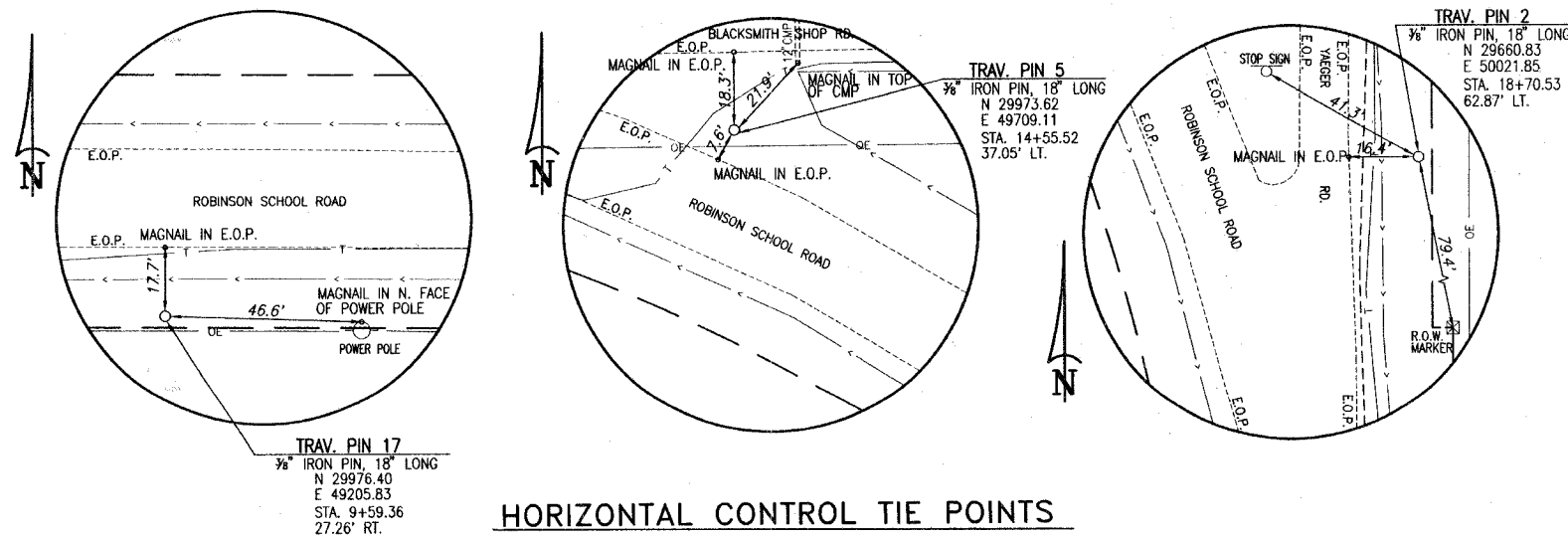
- Existing utilities shown are located from surface observations or information provided by the respective utilities and must be considered approximate. There may be others, the exact location of which are unknown and not shown. The Contractor will be responsible for notifying the respective utilities before work is begun. Field markings of underground utilities may be obtained by providing a minimum of 48 hours advance notice through the J.U.L.I.E. system by calling 1-800-892-0123 or by direct contact with non-members of J.U.L.I.E.
- All construction shall be according to Illinois Department Of Transportation Standard Specifications for Road and Bridge Construction, January 1, 2007, and the latest Supplemental Specifications and Recurring Special Provisions.
- All earth surfaces disturbed during construction operations shall be seeded and mulched upon completion of all grading operations.
- See cross sections for variable earth slopes and special ditch elevations.
- See plan and profile sheets for R.O.W. widths.
- Factors used for quantity calculations are as follows:
 - Bituminous Surface Treatment Class A-2 Application Rates:
 Bituminous Materials Prime Coat = 0.35 Gal./Sq. Yd.
 Bituminous Materials Cover and Seal Coat = 0.30 Gal./Sq. Yd.
 Aggregate Cover Coat and Seal Coat = 25 Lbs./Sq. Yd.
 Aggregate Prime Coat = 5 Lbs./Sq. Yd.
- Any facilities or appurtenances which are the property of any public utility located within the limits of construction shall be relocated or adjusted by their respective owners. The contractor shall notify and cooperate with the owners of any such facility in their removal and rearrangement operations in order that these operations and the construction of this project may progress in a reasonable manner.
- The following utilities may have facilities located within the limits of construction which may require adjustment or removal:

ELECTRIC	GAS	TELEPHONE
Ameren IP 1050 West Blvd. Belleville, Illinois 62222 Attn: Barbara Baldrige 1-618-236-4305	Ameren IP 370 South Main Decatur, Illinois 62528 Attn: Richard Tudor 1-217-424-8132	AT&T Illinois 203 Goethe St. Collinsville, Il. 62234 Attn: Dean Litzenburg 1-618-346-6422

It is understood and agreed that the contractor has taken the foregoing into consideration in submitting his bid, and no additional compensation will be allowed for any delays or inconveniences caused by same.
- No seeding will be permitted outside the dates listed in the Standard Specifications unless granted, in writing by the Engineer.
- All elevations refer to U.S.G.S. mean sea level datum.
- For stabilization, all Type III Barricades shall require a minimum of four sandbags per barricade.

Aggregate for Temporary Access: 50 ton
(Used to maintain access for residents located within the project limits and emergency vehicles)

Temporary Erosion Control Seeding: 100 lbs
(Applied at a rate of 100 lb/acre in areas not to be disturbed within 14 calendar days as described in the SWPPP or as directed by the Engineer)



HORIZONTAL CONTROL TIE POINTS