

F.A.S. ROUTE NO.	SECTION	COUNTY	TOTAL SHEETS	SHEET NO.
N/A	06-00126-06-SP	ST. CLAIR	15	4
STA. 10+85.00		TO STA. 22+11.90		
FEDERAL AID PROJECT		CONTRACT		97319

EARTH EXCAVATION

LOCATION STATION TO STATION	EXCAVATION (CU. YD.)	EXCAVATION ADJUSTED FOR SHRINKAGE	EMBANKMENT (CU. YD.)	EARTHWORK BALANCE WASTE (+) OR SHORTAGE (-)
ROBINSON SCHOOL RD.-STA. 10+85.00 TO STA. 22+11.90	2273	1705	132	+1573
BLACKSMITH SHOP RD.-STA. 30+11.00 TO STA. 33+52.43	626	470	11	+459
YAEGER RD.-STA. 40+10.00 TO STA. 40+83.75	51	38	0	+38
TOTAL	2950	2213	143	+2070

CULVERT SCHEDULE

LOCATION	542D0220 PIPE CULVERTS, CLASS D, TYPE 1 15"	FOOT
BLACKSMITH SHOP RD. - STA. 33+22.00, 17.5' RT.		35
YAEGER RD. - STA. 40+17.00, C		43
ROBINSON SCHOOL RD. - STA. 17+50.00, 18.5' LT.		61
TOTAL		139

CULVERT REMOVAL

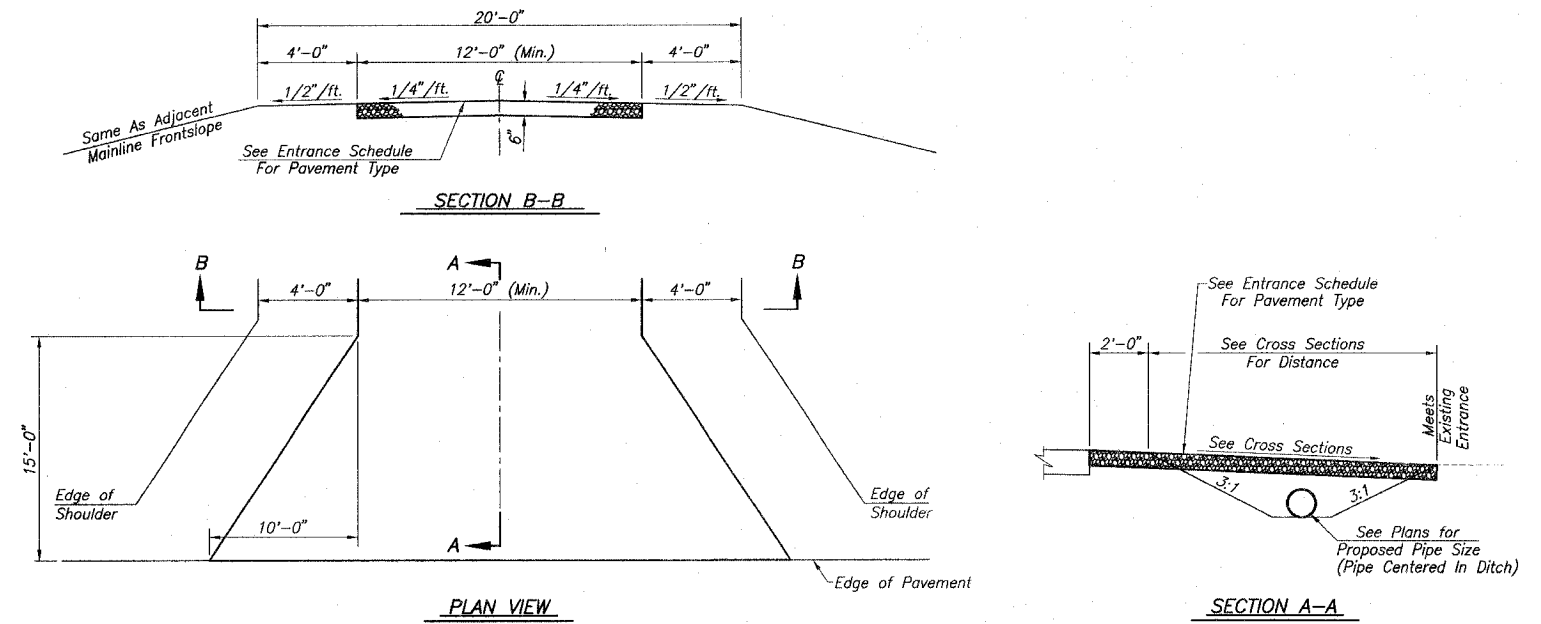
LOCATION	DESCRIPTION	50105210 REMOVE EXISTING CULVERTS, FOOT
ROBINSON SCHOOL RD. - STA. 14+55.76, 68' LT.	12" CMP	23
STA. 18+11.90, 65' LT.	12" CMP	25
BLACKSMITH SHOP RD. - STA. 33+22.00, 12' RT.	12" CMP	20
YAEGER RD. - STA. 40+18.00, C	12" CMP	35
TOTAL		103

EROSION CONTROL SCHEDULE

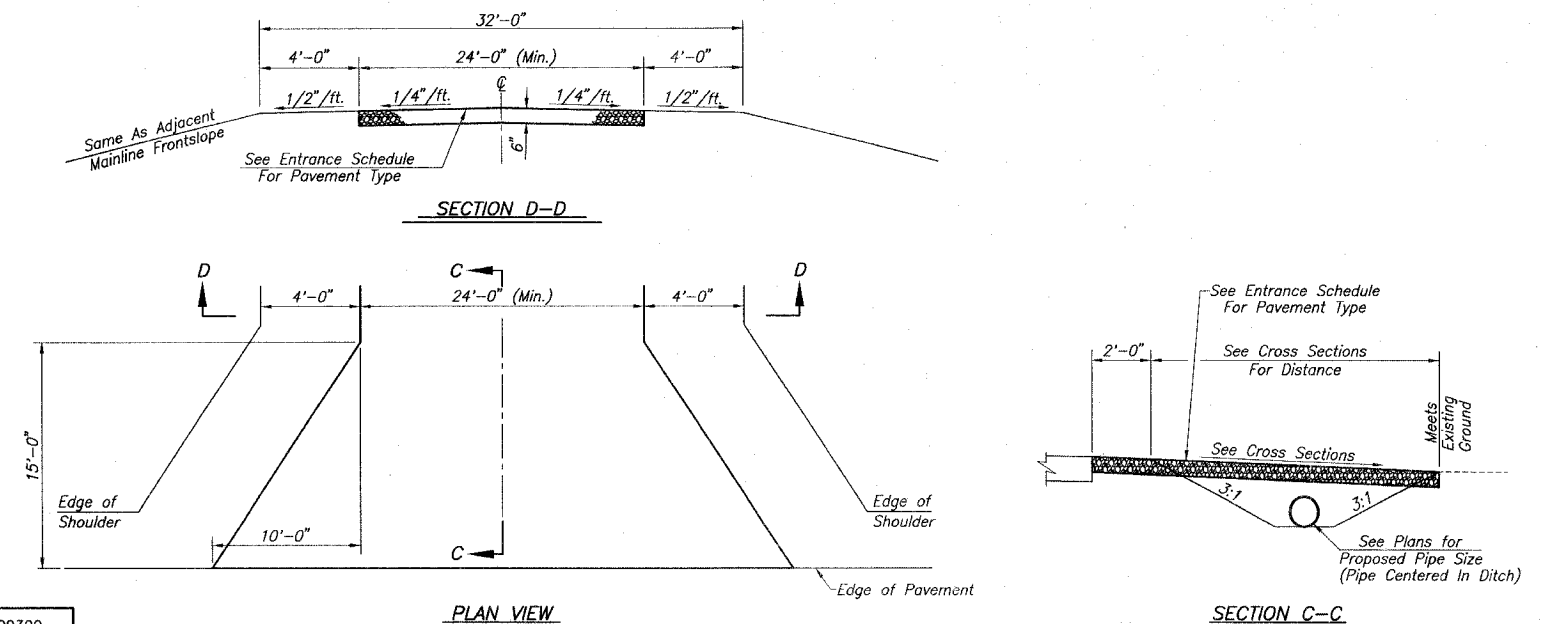
LOCATION	28000300 TEMPORARY DITCH CHECK	28000400 PERIMETER EROSION BARRIER
	EACH	FOOT
STA. 10+85 RT./LT.	2	
STA. 12+05 LT. TO 13+30 LT.		125
STA. 12+50 RT./LT.	2	
STA. 15+60 RT.	1	
STA. 18+50 RT./LT.	2	
STA. 20+10 RT./LT.	2	
STA. 19+95 LT. TO 21+70 LT.		175
STA. 22+10 RT./LT.	2	
STA. 30+50 LT.	1	
STA. 30+65 RT.	1	
STA. 32+30 RT./LT.	2	
STA. 31+50 RT. TO 33+00 RT.		150
TOTAL	15	450

ENTRANCE & ROADWAY SCHEDULE

LOCATION	35100500 AGG. BASE COURSE TYPE A, 6"	35101100 AGG. BASE COURSE TYPE A, 12"	A-2 SURFACE TREATMENT	40300100 BIT. MATERIALS (PRIME COAT)	40300300 BIT. MATERIALS (COVER AND SEAL COATS)	40300500 COVER COAT AGGREGATE	40300600 SEAL COAT AGGREGATE	40600300 AGGREGATE (PRIME COAT)
	SQ. YD.	SQ. YD.	SQ. YD.	GALLON	GALLON	TON	TON	TON
BLACKSMITH SHOP RD. - STA. 33+22 RT., P.E.	41	2761	2761	966	1656	35	35	7
ROBINSON SCHOOL RD. - STA. 17+50 LT., F.E.	92	956	956	335	574	12	12	2
YAEGER RD. -		142	142	50	85	2	2	1
TOTAL	133	3859	3859	1351	2315	49	49	10



TYPICAL PRIVATE ENTRANCE



TYPICAL FIELD ENTRANCE