

F.A.S. ROUTE NO.	SECTION	COUNTY	TOTAL SHEETS	SHEET NO.
N/A	06-00126-06-SP	ST. CLAIR	15	5
STA. 10+85.00		TO STA. 22+11.90		
FEDERAL AID PROJECT		CONTRACT 97319		

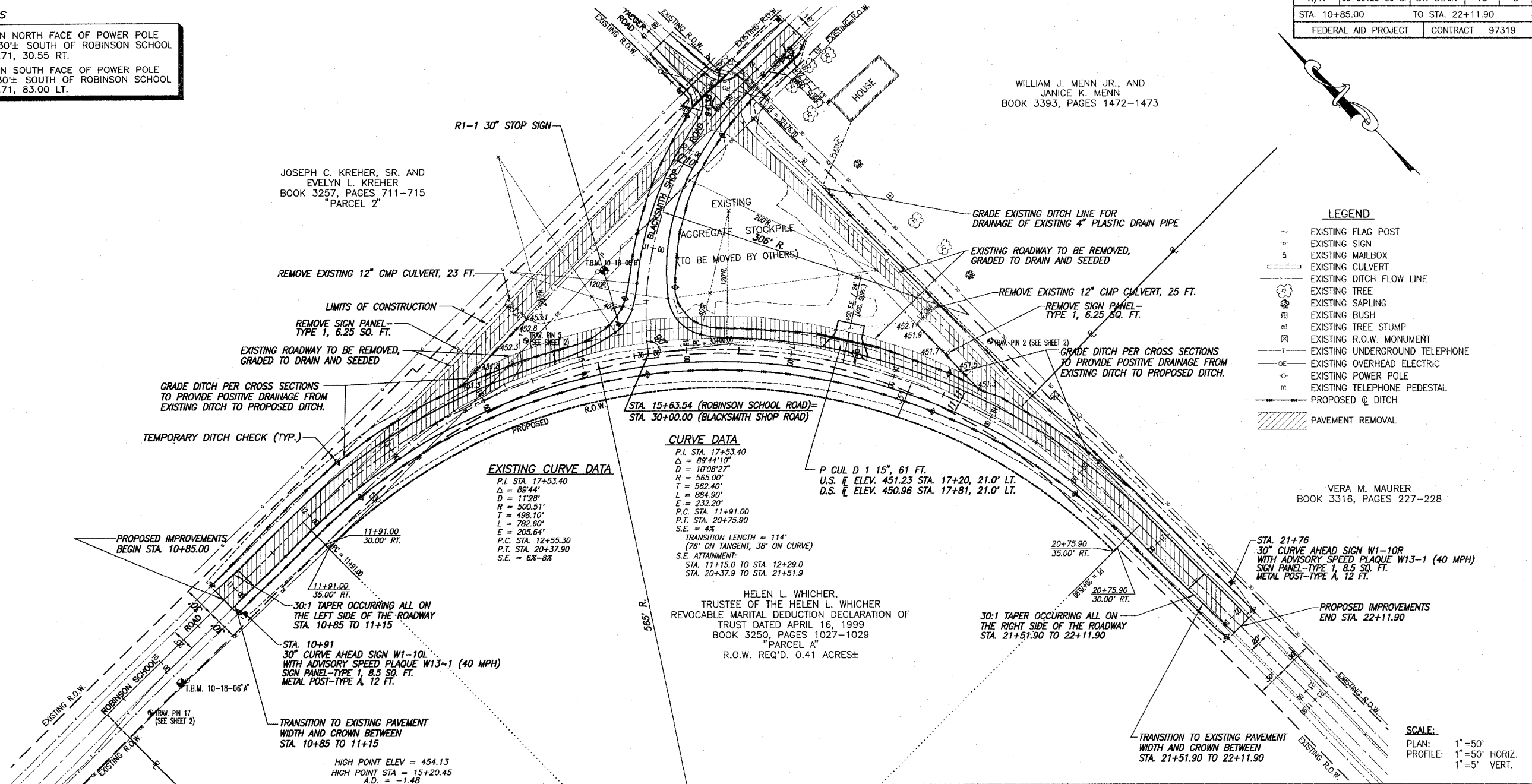
BENCHMARKS

- T.B.M. 10-18-06"A": RAILROAD SPIKE IN NORTH FACE OF POWER POLE (THIRD POLE WEST OF INTERSECTION), 30± SOUTH OF ROBINSON SCHOOL ROAD. ELEV. 451.38 STA. 10+05.71, 30.55 RT.
- T.B.M. 10-18-06"B": RAILROAD SPIKE IN SOUTH FACE OF POWER POLE (FIRST POLE WEST OF INTERSECTION), 30± SOUTH OF ROBINSON SCHOOL ROAD. ELEV. 456.60 STA. 15+29.71, 83.00 LT.

COORDINATE TABLE

STATION	NORTHING	EASTING
11+00.00	30003.01	49346.63
P.C. 11+91.00	30002.59	49437.60
P.I. 17+53.40	30000.00	50000.00
P.T. 20+75.90	29437.60	50000.00
21+00.00	29413.47	50000.00
P.C. 30+00.00	29882.56	49783.18
P.I. 31+48.70	29999.67	49874.82
P.T. 32+76.70	30000.06	50023.43
33+50.00	30000.25	50096.65
40+00.00	29999.10	50000.00
40+50.00	30049.10	50000.00
41+00.00	30099.10	50000.00

SEE SHEET 2 FOR HORIZONTAL CONTROL TIE POINTS



EXISTING CURVE DATA

P.I. STA. 17+53.40
 $\Delta = 89^{\circ}44'$
 $D = 11^{\circ}28'$
 $R = 300.51'$
 $T = 498.10'$
 $L = 782.60'$
 $E = 205.64'$
 $S.E. = 6\% - 8\%$
P.C. STA. 12+55.30
P.T. STA. 20+37.90

CURVE DATA

P.I. STA. 17+53.40
 $\Delta = 89^{\circ}44'10''$
 $D = 10^{\circ}08'27''$
 $R = 565.00'$
 $T = 562.40'$
 $L = 884.90'$
 $E = 232.20'$
 $S.E. = 4\%$
TRANSITION LENGTH = 114'
(78' ON TANGENT, 38' ON CURVE)
S.E. ATTAINMENT:
STA. 11+15.0 TO STA. 12+29.0
STA. 20+37.9 TO STA. 21+51.9

HELEN L. WHICHER,
TRUSTEE OF THE HELEN L. WHICHER
REVOCABLE MARITAL DEDUCTION DECLARATION OF
TRUST DATED APRIL 16, 1999
BOOK 3250, PAGES 1027-1029
"PARCEL A"
R.O.W. REQ'D. 0.41 ACRES±

LEGEND

- EXISTING FLAG POST
- EXISTING SIGN
- EXISTING MAILBOX
- EXISTING CULVERT
- EXISTING DITCH FLOW LINE
- EXISTING TREE
- EXISTING SAPLING
- EXISTING BUSH
- EXISTING TREE STUMP
- EXISTING R.O.W. MONUMENT
- EXISTING UNDERGROUND TELEPHONE
- EXISTING OVERHEAD ELECTRIC
- EXISTING POWER POLE
- EXISTING TELEPHONE PEDESTAL
- PROPOSED C DITCH
- PAVEMENT REMOVAL

SCALE:

PLAN: 1" = 50'
PROFILE: 1" = 50' HORIZ.
1" = 5' VERT.

