

FS ROUTE	IDOT SECTION	COUNTY
1857	04-00071-00-BR	MONROE
FEDERAL AID PROJECT		ILLINOIS
IDOT JOB NO.	BR-RS-1857(121)	
IDOT CONTRACT NO.	97323	

**THOUVENOT, WADE & MOERCHEN, INC.**  
ENGINEERS ♦ SURVEYORS ♦ PLANNERS



**CORPORATE OFFICE**  
4940 OLD COLLINSVILLE RD.  
SWANSEA, ILLINOIS 62226  
TEL (618) 624-4488  
FAX (618) 624-6688  
corp@twm-inc.com

**EDWARDSVILLE OFFICE**  
1015B CENTURY DRIVE  
EDWARDSVILLE, ILLINOIS 62025  
TEL (618) 656-4040  
FAX (618) 656-4343  
edwardsville@twm-inc.com

**ST. LOUIS OFFICE**  
1001 CRAIG ROAD, SUITE 260  
ST. LOUIS, MISSOURI 63146  
TEL (314) 236-5052  
FAX (314) 872-2194  
stlouis@twm-inc.com

**WATERLOO OFFICE**  
113 SOUTH MAIN STREET  
WATERLOO, ILLINOIS 62298  
TEL (618) 939-5050  
FAX (618) 939-3938  
waterloo@twm-inc.com

ILLINOIS PROFESSIONAL DESIGN FIRM	184-001220
PROFESSIONAL ENGINEERING CORP.	62-035370
PROFESSIONAL STRUCTURAL ENGR. CORP.	81-005202
ILLINOIS PROF. LAND SURVEYING CORP.	048-000029
MISSOURI PROFESSIONAL ENGR. CORP.	NC 001528
MISSOURI LAND SURVEYING CORP.	NC 000346

SEAL

**FINAL**

Signature: \_\_\_\_\_  
Signature Date: \_\_\_\_\_  
Expiration Date: \_\_\_\_\_  
**STATEMENT OF RESPONSIBILITY**  
I hereby confirm that the document herein to be authenticated by my seal is restricted to this sheet, and I hereby disclaim any responsibility for all other drawings, specifications, estimates, reports or other documents or instruments relating to or intended to be utilized for any other part of the architectural, engineering or survey project.

**CURVE DATA #C-2**  
P.I. = STA. 300+78.90  
Δ = 34°36'11"  
R = 1425.00'  
T = 443.88'  
L = 860.61'  
E = 67.53'  
e = 8.00%  
T.R. = 39.96'  
S.E. Run = 213.12'  
P.C. = STA. 296+48.60  
P.T. = STA. 305+09.21

**ADDITIONAL CURVE GEOMETRICS:**  
  
**S.E. TRANSITIONS:**  
REFER TO TYPICAL CROSS SECTIONS FOR SUPERELEVATION ATTAINMENT INFORMATION

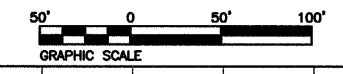
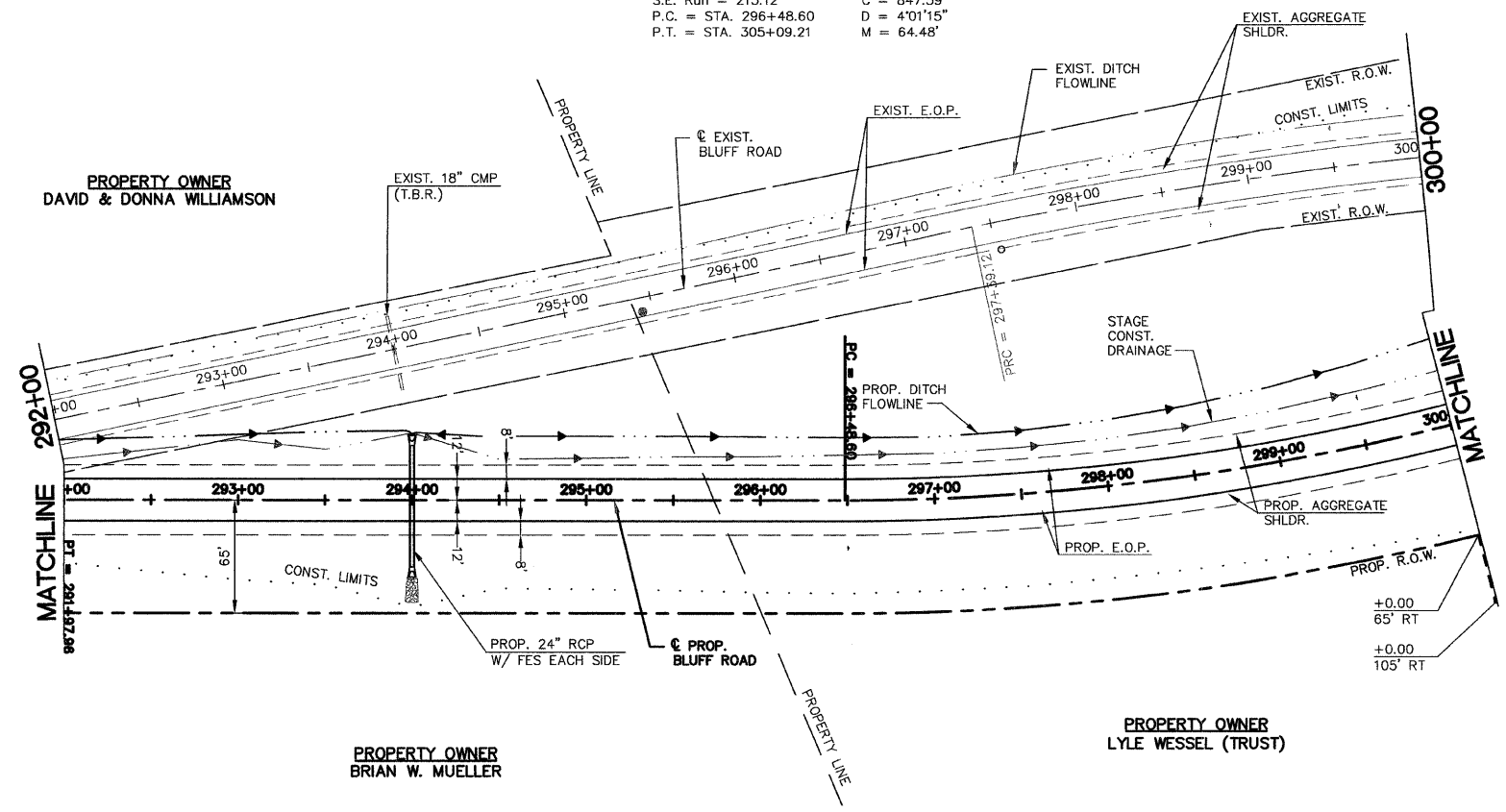
C = 847.59'  
D = 4°01'15"  
M = 64.48'

**PROPERTY OWNER**  
**PHYLLIS E. THOMAS**

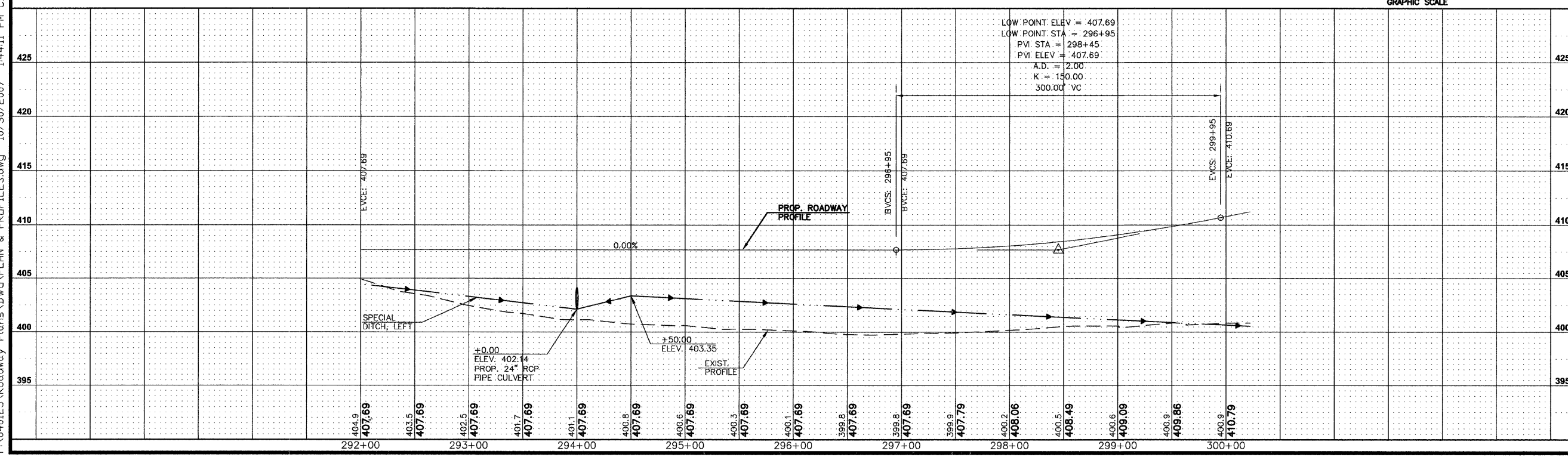
**PROPERTY OWNER**  
**DAVID & DONNA WILLIAMSON**

**PROPERTY OWNER**  
**BRIAN W. MUELLER**

**PROPERTY OWNER**  
**LYLE WESSEL (TRUST)**



P:\040125\Roadway Plans\DWG\PLAN & PROFILES.dwg 10/30/2007 1:44:11 PM CDT



**TITLE**  
PLAN AND PROFILE  
STA. 292+00 TO STA. 300+00  
BLUFF ROAD (CTY. HWY. 6)

**PROJECT:**  
BLUFF ROAD (CTY. HWY. 6)  
BRIDGE REPLACEMENT  
OVER FOUNTAIN CREEK  
MONROE COUNTY, IL

REV.	DATE	DESCRIPTION
1		
2		
3		

DRAWN BY:	KBF/JWS	SHEET	15
DESIGNED BY:	BJG	OF 67 SHEETS	
CHECKED BY:	SJK		
APPROVED BY:	SJK	PROJECT DESCRIPTION	BLUFF RD. BRIDGE OVER FOUNTAIN CRK.
PROJECT NUMBER:	116-040125		

ISSUED FOR REVIEW  ISSUED FOR BIDDING  
 ISSUED FOR CONSTR.  RECORD DRAWING