

EROSION CONTROL ITEMS	
TEMPORARY (DURING CONSTRUCTION ONLY)	PERMANENT (PLACED DURING FINAL GRADING)
① INLET & PIPE PROTECTION	① STONE RIPRAP
② PERIMETER EROSION BARRIER	② EXCELSTOR BLANKET
③ DITCH CHECK	③ NOT USED
④ DITCH CHECK (AGGREGATED)	④ NOT USED
⑤ SEDIMENT BASIN	⑤ NOT USED

**NOTES:**

- TEMPORARY DITCH CHECKS ARE TO BE PLACED DURING STAGE I CONSTRUCTION AND PROPERLY MAINTAINED DURING STAGE CONSTRUCTION. AN ADDITIONAL APPLICATION HAS BEEN INCLUDED IN THE PROJECT QUANTITIES FOR THE FINAL GRADING OF THE EAST FORESLOPES AND PERMANENT SEEDING OF THE ENTIRE DISTURBED AREA EAST OF THE PROPOSED ALIGNMENT. THE ADDITIONAL APPLICATION SHALL BE PLACED DURING STAGE V CONSTRUCTION)
- PERIMETER EROSION BARRIER IS TO BE PLACED DURING STAGE I CONSTRUCTION AND PROPERLY MAINTAINED UNTIL PERMANENT VEGETATION IS WELL ESTABLISHED.
- ALL INLET AND PIPE PROTECTION SHALL BE IMPLEMENTED AT TIME OF EXTENSION/PLACEMENT OF DRAINAGE CULVERTS.

FAS ROUTE	IDOT SECTION	COUNTY
1857	04-00071-00-BR	MONROE
FEDERAL AID PROJECT		ILLINOIS
IDOT JOB NO.	BR-RS-1857(121)	
IDOT CONTRACT NO.	97323	

**THOUVENOT, WADE & MOERCHEN, INC.**  
ENGINEERS ♦ SURVEYORS ♦ PLANNERS



**CORPORATE OFFICE**  
4940 OLD COLLINSVILLE RD.  
SWANSEA, ILLINOIS 62226  
TEL (618) 624-4488  
FAX (618) 624-6688  
corp@twm-inc.com

**EDWARDSVILLE OFFICE**  
1015B CENTURY DRIVE  
EDWARDSVILLE, ILLINOIS 62025  
TEL (618) 656-4040  
FAX (618) 656-4343  
edwardsville@twm-inc.com

**ST. LOUIS OFFICE**  
1001 CRAIG ROAD, SUITE 260  
ST. LOUIS, MISSOURI 63146  
TEL (314) 236-5052  
FAX (314) 872-2194  
stlouis@twm-inc.com

**WATERLOO OFFICE**  
113 SOUTH MAIN STREET  
WATERLOO, ILLINOIS 62298  
TEL (618) 939-5050  
FAX (618) 939-3938  
waterloo@twm-inc.com

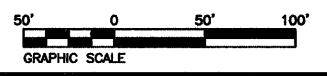
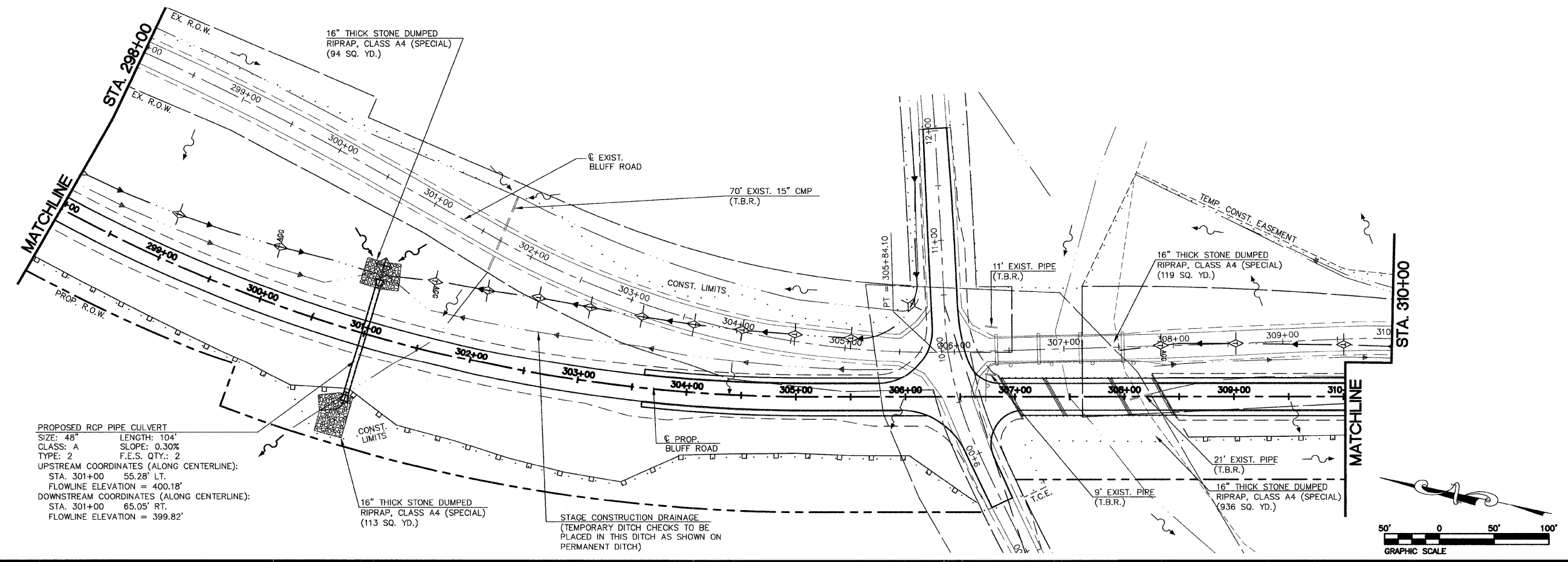
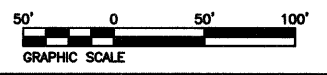
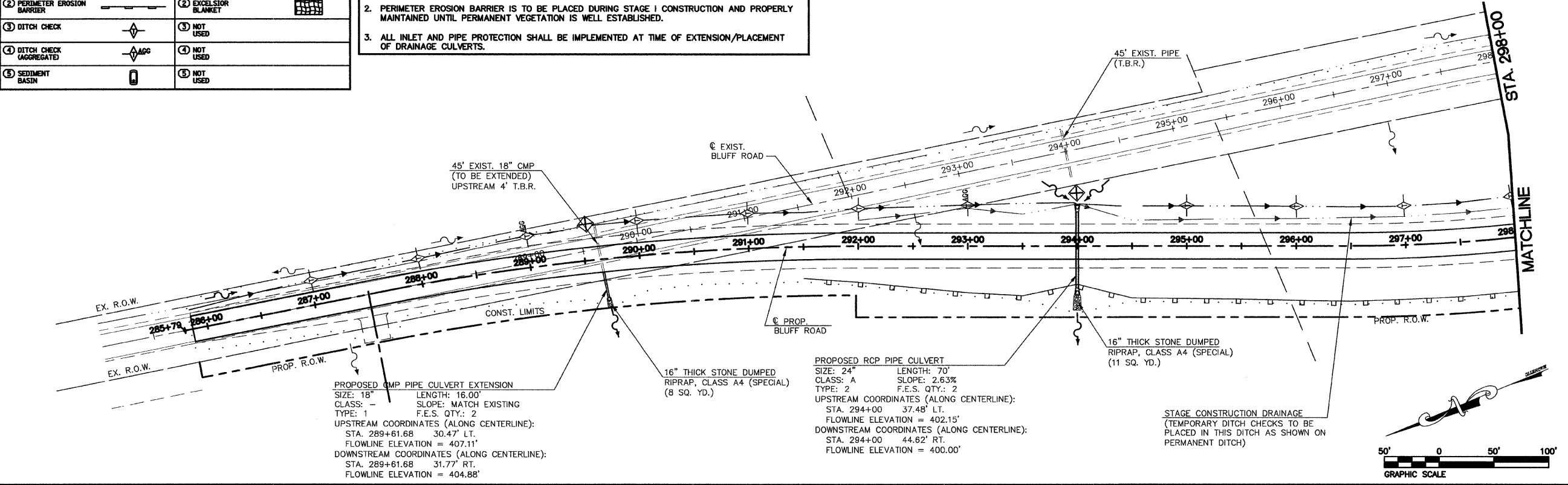
PROFESSIONAL REGISTRATIONS  
ILLINOIS PROFESSIONAL DESIGN FIRM 184-001220  
PROFESSIONAL ENGINEERING CORP. 62-035370  
PROFESSIONAL STRUCTURAL ENGR. CORP. 81-056202  
ILLINOIS PROF. LAND SURVEYING CORP. 048-000029  
MISSOURI PROFESSIONAL ENGR. CORP. NC 001528  
MISSOURI LAND SURVEYING CORP. NC 000346

SEAL

**FINAL**

Signature: \_\_\_\_\_ Date: \_\_\_\_\_  
Expiration Date: \_\_\_\_\_

**STATEMENT OF RESPONSIBILITY**  
I hereby confirm that the document herein to be authenticated by my seal is restricted to this sheet, and I hereby disclaim any responsibility for all other drawings, specifications, estimates, reports or other documents or instruments relating to or intended to be utilized for any other part of the architectural, engineering or survey project.



**PROPOSED DRAINAGE AND EROSION CONTROL PLAN**  
BLUFF ROAD (CTY. HWY. 6)

**BLUFF ROAD (CTY. HWY. 6) BRIDGE REPLACEMENT OVER FOUNTAIN CREEK**  
MONROE COUNTY, IL

REV.	DATE	DESCRIPTION
△		
△		
△		

DRAWN BY: KBF/JWS SHEET: 19  
DESIGNED BY: BJK OF 67 SHEETS  
CHECKED BY: SJK  
APPROVED BY: SJK PROJECT DESCRIPTION: BLUFF RD. BRIDGE  
PROJECT NUMBER: 116-040125 OVER FOUNTAIN CRK.

ISSUED FOR REVIEW  ISSUED FOR BIDDING  
 ISSUED FOR CONSTR.  RECORD DRAWING

P:\040125\Roadway Plans\DWG\EROSION\_CONTROL.dwg 10/12/2007 6:58:18 AM CDT