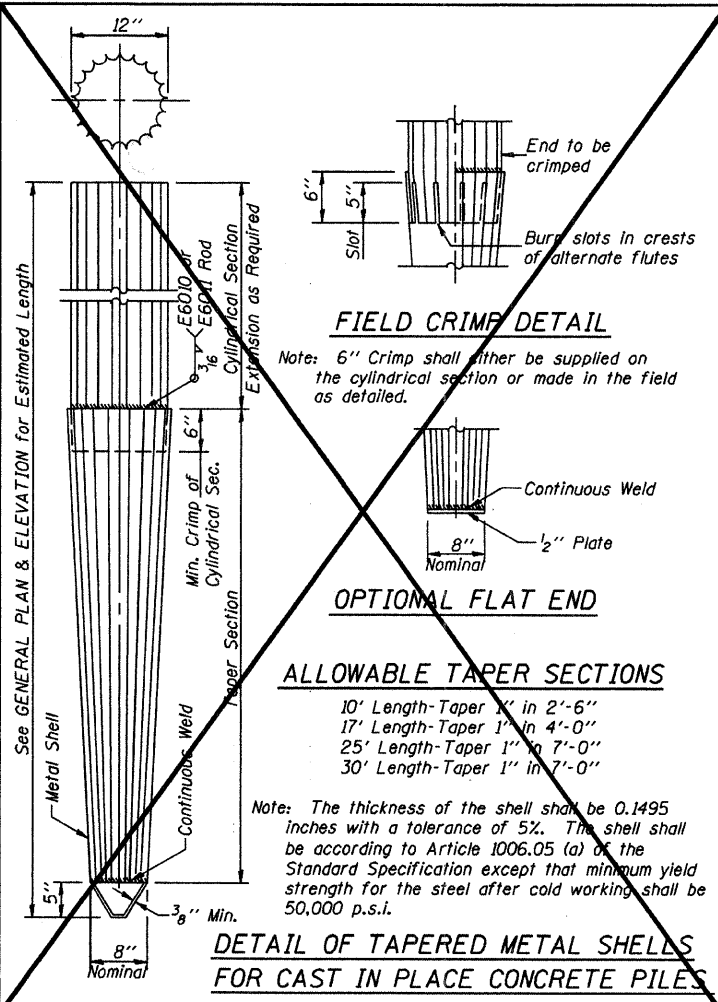


**SECTION A-A
FOR PILES UNDER
45' LONG**

**SECTION A-A
FOR PILES 45'
OR MORE**

Handling: For Pile lengths up to 45' use two slings placed at a distance of 0.21L from each end. For Piles longer than 45', use three slings placed at a distance of 0.12L from each end and at mid point of pile.

**DETAIL OF PRECAST
CONCRETE PILES**



FIELD CRIMP DETAIL

Note: 6" Crimp shall either be supplied on the cylindrical section or made in the field as detailed.

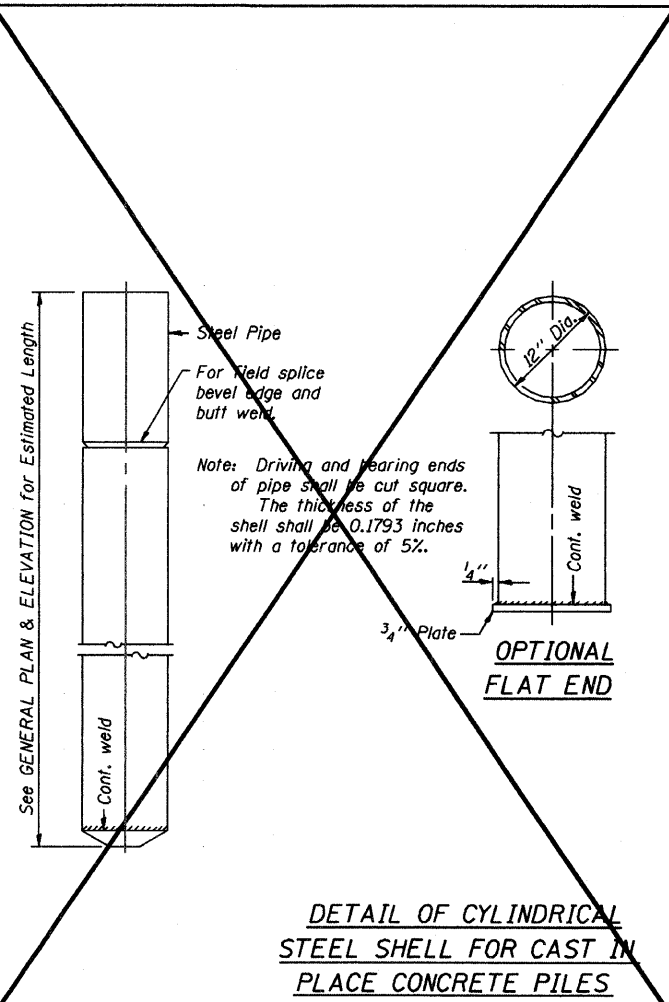
OPTIONAL FLAT END

ALLOWABLE TAPER SECTIONS

- 10' Length-Taper 1" in 2'-6"
- 17' Length-Taper 1" in 4'-0"
- 25' Length-Taper 1" in 7'-0"
- 30' Length-Taper 1" in 7'-0"

Note: The thickness of the shell shall be 0.1495 inches with a tolerance of 5%. The shell shall be according to Article 1006.05 (a) of the Standard Specification except that minimum yield strength for the steel after cold working shall be 50,000 p.s.i.

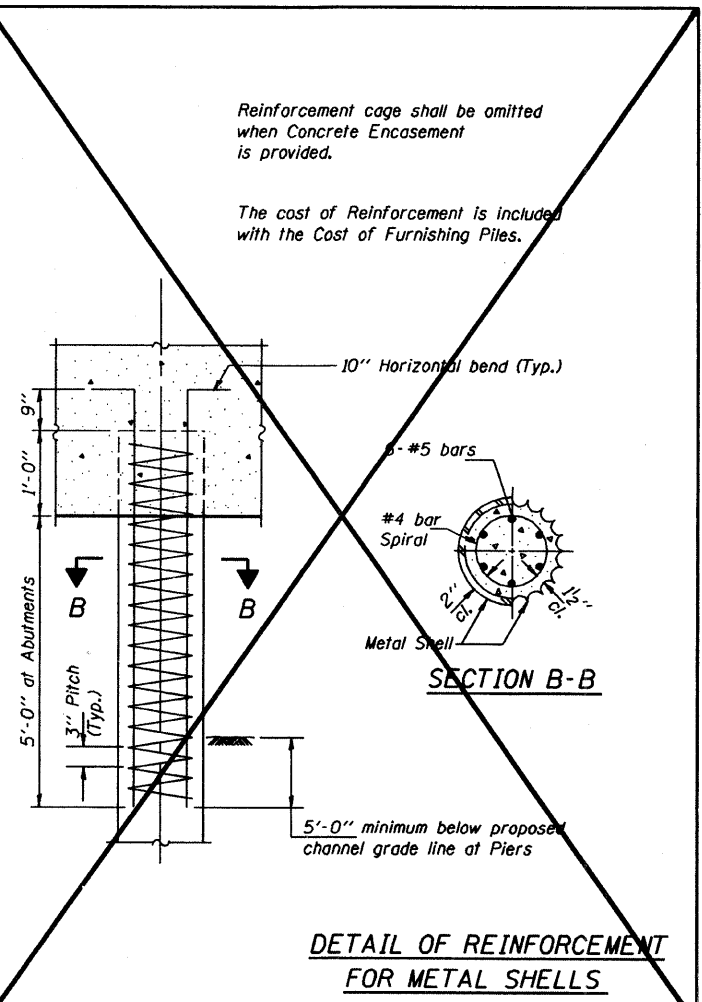
**DETAIL OF TAPERED METAL SHELLS
FOR CAST IN PLACE CONCRETE PILES**



**DETAIL OF CYLINDRICAL
STEEL SHELL FOR CAST IN
PLACE CONCRETE PILES**

**OPTIONAL
FLAT END**

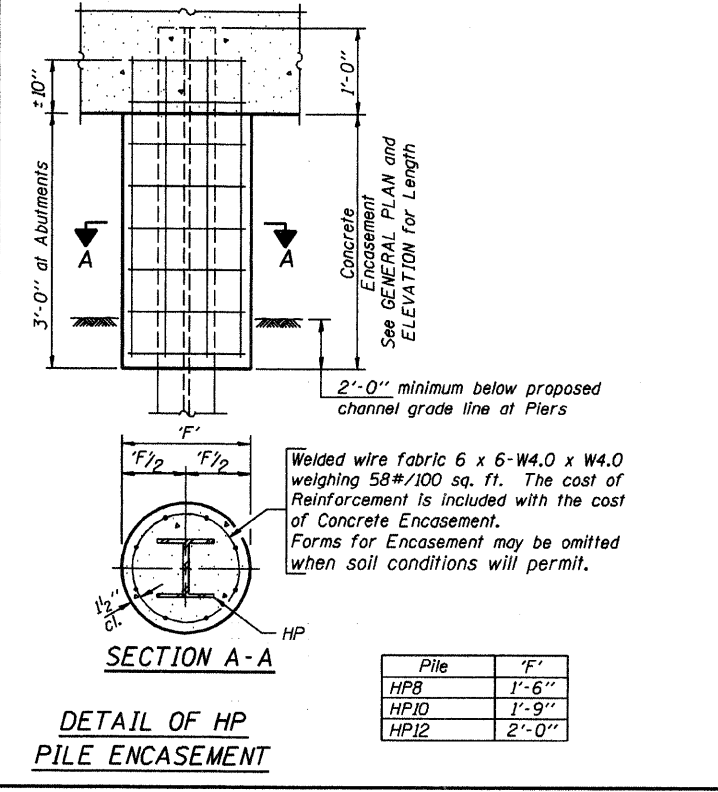
Note: Driving and bearing ends of pipe shall be cut square. The thickness of the shell shall be 0.1793 inches with a tolerance of 5%.



**DETAIL OF REINFORCEMENT
FOR METAL SHELLS**

Reinforcement cage shall be omitted when Concrete Encasement is provided.

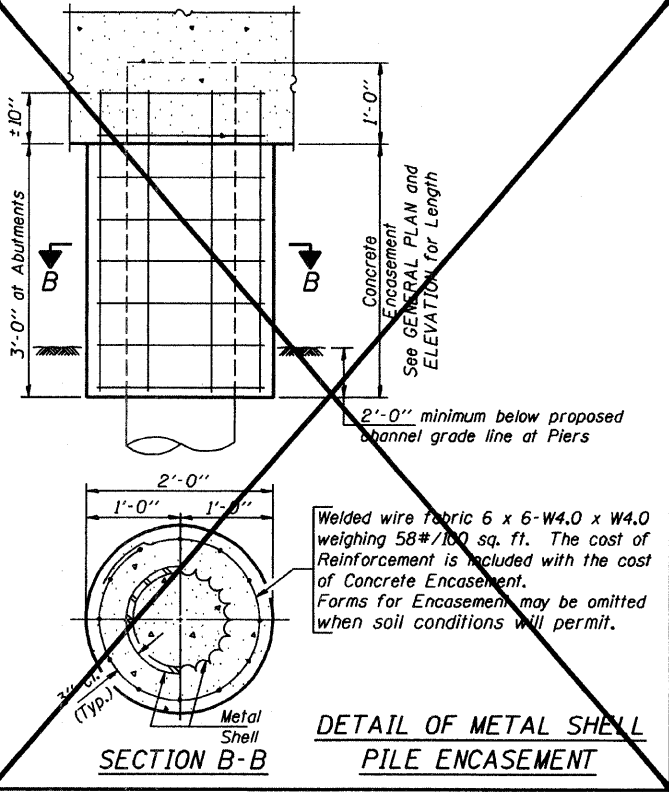
The cost of Reinforcement is included with the Cost of Furnishing Piles.



**DETAIL OF HP
PILE ENCASEMENT**

Welded wire fabric 6 x 6-W4.0 x W4.0 weighing 58#/100 sq. ft. The cost of Reinforcement is included with the cost of Concrete Encasement. Forms for Encasement may be omitted when soil conditions will permit.

Pile	'F'
HP8	1'-6"
HP10	1'-9"
HP12	2'-0"



**DETAIL OF METAL SHELL
PILE ENCASEMENT**

Welded wire fabric 6 x 6-W4.0 x W4.0 weighing 58#/100 sq. ft. The cost of Reinforcement is included with the cost of Concrete Encasement. Forms for Encasement may be omitted when soil conditions will permit.

**QUANTITIES/FT. OF ENCASEMENT
(STEEL PILES)**

Pile Size	Item	Quantity
HP8	Concrete Encasement	0.063 C.Y.
HP10	Concrete Encasement	0.086 C.Y.
HP12	Concrete Encasement	0.112 C.Y.

(METAL SHELL PILES)

Pile Size	Item	Quantity
12" Dia.	Concrete Encasement	0.087 C.Y.

PILE DETAILS

STANDARD CX-1

Illinois Department of Transportation
 PASSED FEBRUARY 1, 2000
 (Signature)
 Engineer of Bridge Design
 APPROVED FEBRUARY 1, 2000
 (Signature)
 Engineer of Bridges and Structures