

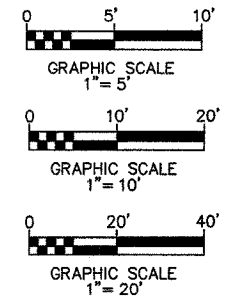
INDEX OF SHEETS

SHEET NO.	ITEM
1	COVER SHEET
2	GENERAL NOTES
3-4	SUMMARY OF QUANTITIES
5-6	SCHEDULES
7-9	EXISTING TYPICAL SECTIONS
10-13	PROPOSED TYPICAL SECTIONS
14-21	PLAN AND PROFILE
22	TRAFFIC CONTROL PLAN
23-26	ROUNDBOUT CONSTRUCTION STAGING
27-31	STORM WATER POLLUTION PREVENTION PLAN
32-35	DRAINAGE PLAN
36-38	DRAINAGE PROFILE
39	WATER MAIN PLAN AND PROFILE
40	ROUNDBOUT DETAIL
41-45	INTERSECTION DETAILS
46-49	PAVEMENT MARKING PLAN
50-56	SIGNING PLAN, SCHEDULE & DETAILS
57	ENTRANCE DETAILS
58	LANDSCAPING DETAILS
59	DRAINAGE STRUCTURE DETAILS
60	CONSTRUCTION DETAILS
61-70	POPLAR STREET CROSS SECTIONS
71-81	BROADWAY CROSS SECTIONS

STANDARDS

000001-05	604001-02	701331-02
001001-01	604006-03	701501-04
280001-04	604011-03	701801-03
424001-05	604036-01	701901
442201-03	604091-01	720001
542301-01	606001-03	720006-01
542606	606006-01	720011
602301-01	701001-01	720021-01
602306-01	701006-02	729001
602401-01	701011-01	780001-01
602601-01	701301-02	781001-02
602701-01	701311-02	

MICROFILMED _____
 REEL NUMBER _____
 AWARDED _____
 RESIDENT ENGINEER _____
 AS BUILT CHANGES WERE MADE ON THE FOLLOWING SHEETS _____
 DESIGN DESIGNATION _____



FULL SIZE PLANS HAVE BEEN PREPARED USING STANDARD ENGINEERING SCALES. REDUCED SIZED PLANS WILL NOT CONFORM TO STANDARD SCALES. IN MAKING MEASUREMENTS ON REDUCED PLANS, THE ABOVE SCALES MAY BE USED.

JOINT UTILITY LOCATING INFORMATION FOR EXCAVATORS PHONE: 800-892-0123

ROADWAY CLASSIFICATION = TS-3 (URBAN MINOR ARTERIAL)
 DESIGN SPEED = 30 M.P.H.
 CURRENT TRAFFIC (2007) = 11,300
 DESIGN YEAR (2028) = 12,600

STATE OF ILLINOIS
 DEPARTMENT OF TRANSPORTATION

PLANS FOR PROPOSED

FEDERAL AID HIGHWAY

F.A.U. 8852

POPLAR STREET WIDENING AND RESURFACING - PHASE 2

SECTION: 06-00056-01-WR

MADISON COUNTY

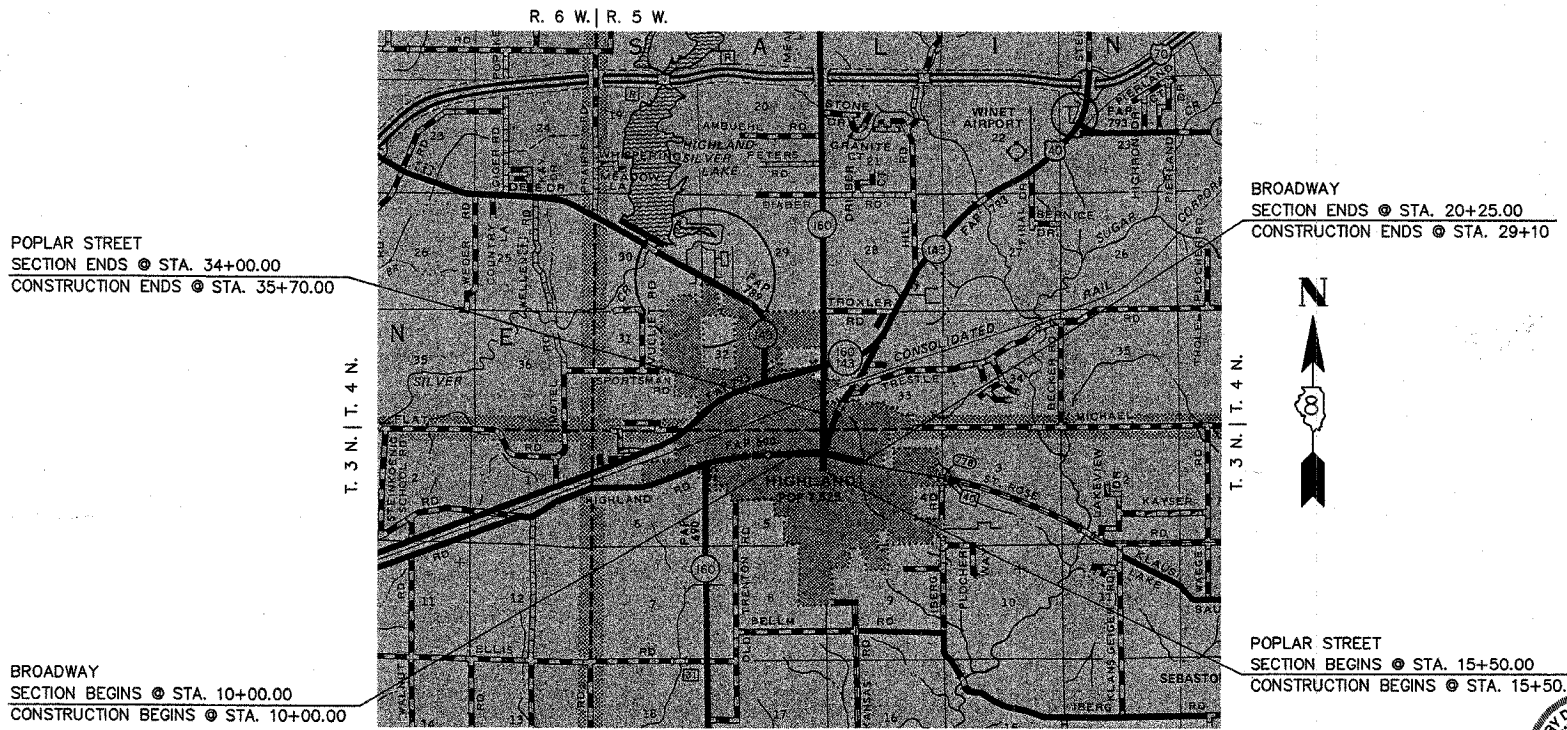
CITY OF HIGHLAND

PROJECT CMM-M-5011 (246)

JOB NO. C-98-312-08

CITY CONSTRUCTION CONTRACT NO. PW-01-05

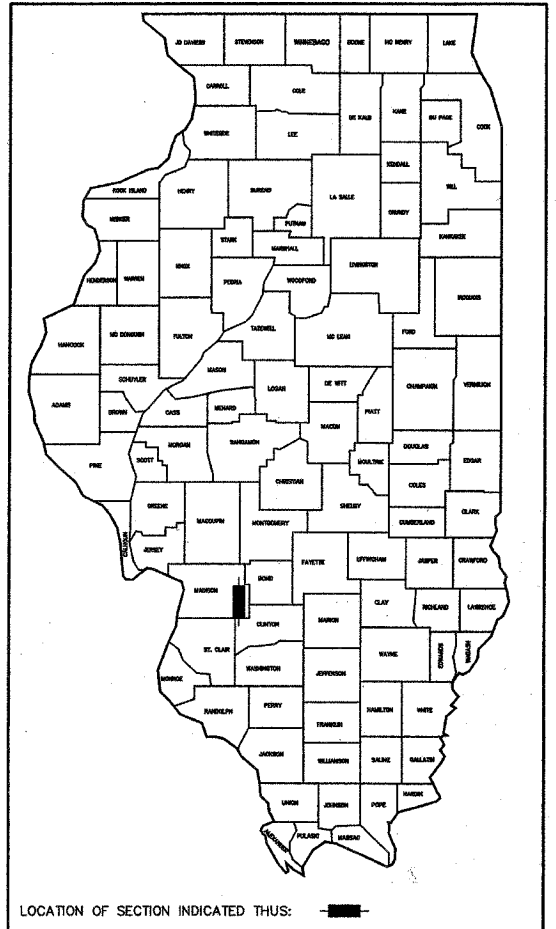
SCALE IN FEET
 PLAN 1" = 20'
 PROFILE HORIZ. 1" = 20'
 PROFILE VERT. 1" = 5'
 CROSS SECTIONS VERT. 1" = 5'
 CROSS SECTIONS HORIZ. 1" = 10'



LOCATION MAP
 SCALE: 1" = 4000'
 NET LENGTH OF POPLAR STREET = 1,850 FEET (0.350 MILE)
 NET LENGTH OF BROADWAY = 1,025 FEET (0.194 MILE)
 GROSS LENGTH OF PROJECT = 2,875 FEET (0.544 MILE)

F.A.U. RTE.	SECTION	COUNTY	TOTAL SHEETS	SHEET NO.
8852	06-00056-01-WR	MADISON	81	1
STA.	TO STA.			
FED. ROAD DIST. NO.	ILLINOIS	FED. AID PROJECT		
COVER SHEET				

CONTRACT NO. 97324



LOCATION OF SECTION INDICATED THIS: [Symbol]

ILLINOIS DEPARTMENT OF TRANSPORTATION

APPROVED October 12 2007
Joseph R. Michaelis
 JOSEPH MICHAELIS MAYOR OF HIGHLAND

PASSED October 26 2007
[Signature]
 DISTRICT 8 ENGINEER OF LOCAL ROADS & STREETS

RELEASED FOR BID BASED ON LIMITED REVIEW October 26 2007
Mary Thomas
 DEPUTY DIRECTOR OF HIGHWAYS, REGION 5 ENGINEER



Larry Thomason DATE: 10/12/07
 LARRY D. THOMASON, JR.
 IL P.E. NO. 062-051667



EXPIRES 11-30-2007