

F.A.U. RTE.	SECTION	COUNTY	TOTAL SHEETS	SHEET NO.
8852	06-00056-01-WR	MADISON	81	15
STA. 20+00 TO STA. 25+00				
FED. ROAD DIST. NO.		ILLINOIS	FED. AID PROJECT	
PLAN AND PROFILE				

CONTRACT NO. 97324

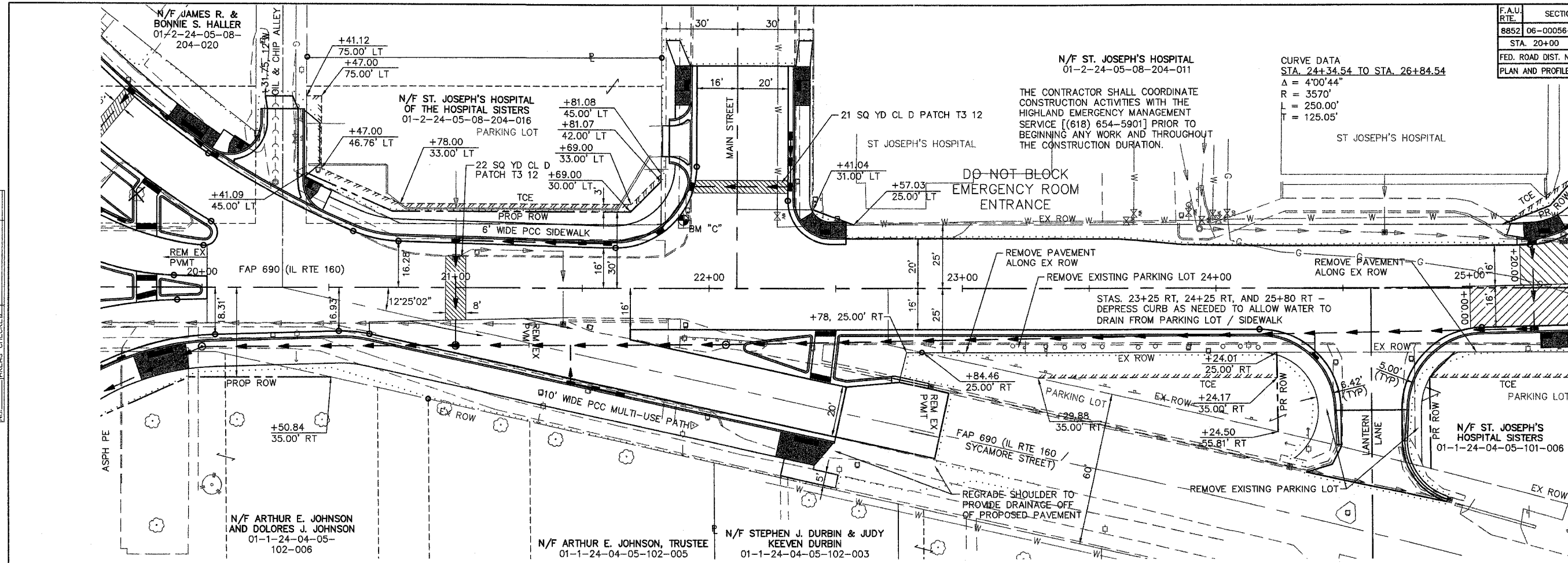
N/F ST. JOSEPH'S HOSPITAL
01-2-24-05-08-204-011

THE CONTRACTOR SHALL COORDINATE CONSTRUCTION ACTIVITIES WITH THE HIGHLAND EMERGENCY MANAGEMENT SERVICE [(618) 654-5901] PRIOR TO BEGINNING ANY WORK AND THROUGHOUT THE CONSTRUCTION DURATION.

ST JOSEPH'S HOSPITAL

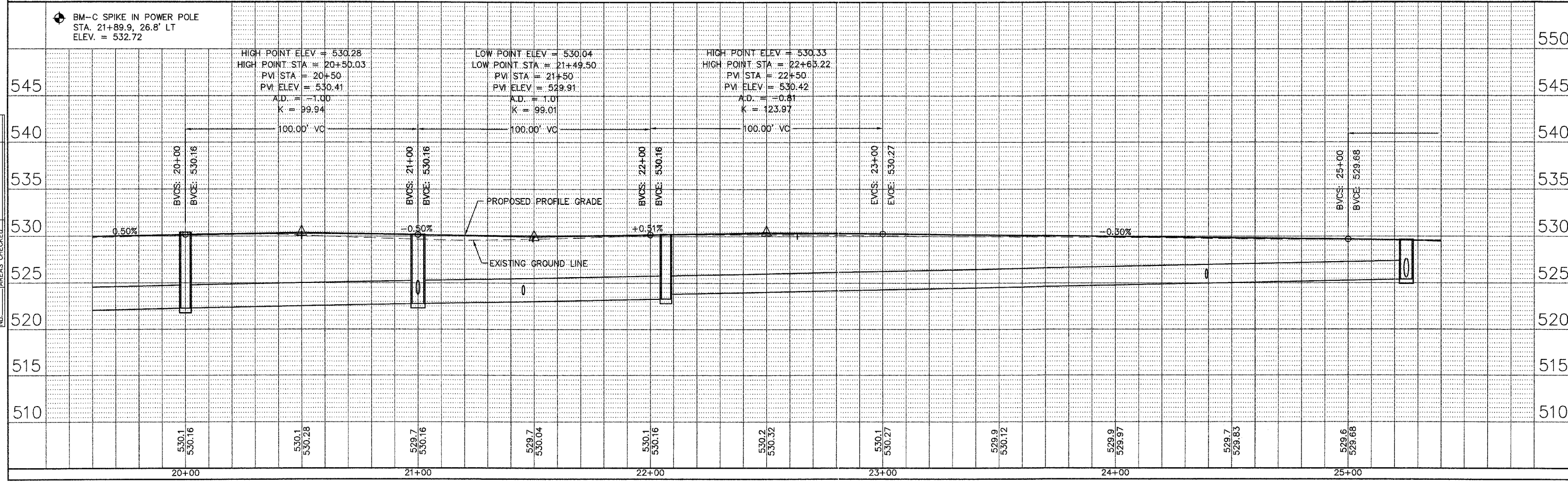
DO NOT BLOCK EMERGENCY ROOM ENTRANCE

CURVE DATA
STA. 24+34.54 TO STA. 26+84.54
 $\Delta = 4^{\circ}00'44''$
 $R = 3570'$
 $L = 250.00'$
 $T = 125.05'$



DATE	BY

DATE	BY



POPLAR STREET