

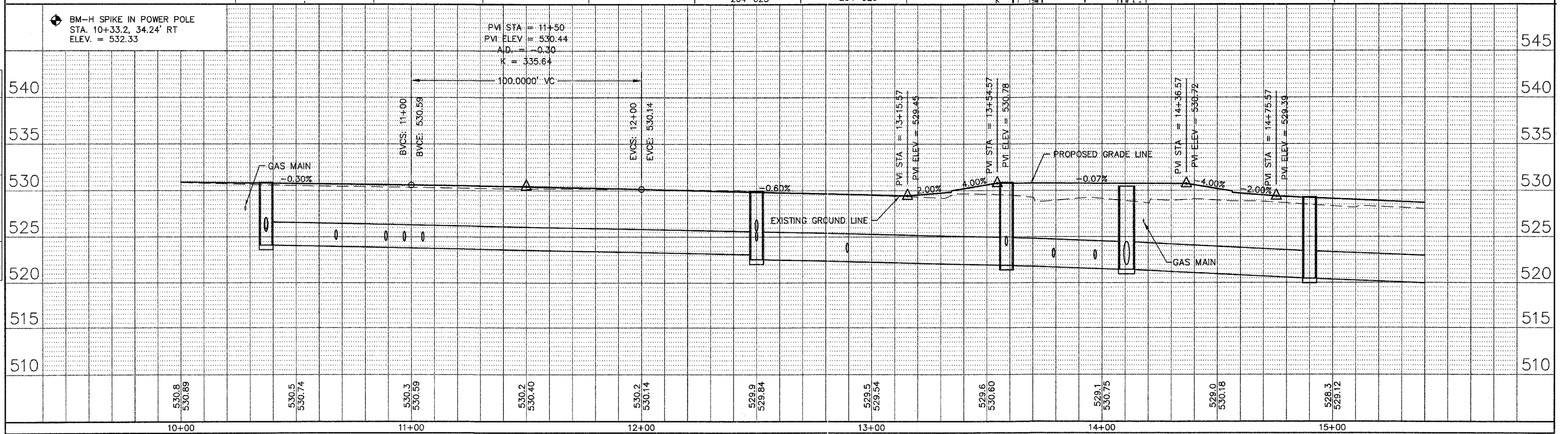
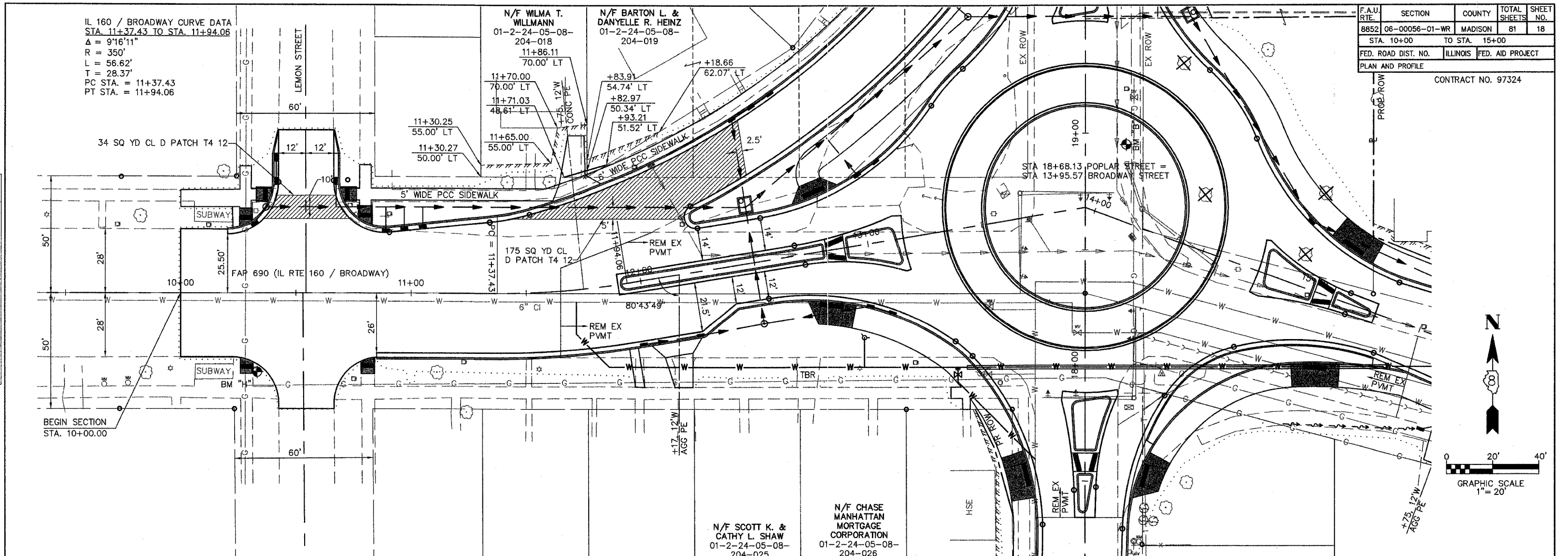
IL 160 / BROADWAY CURVE DATA
 STA 11+37.43 TO STA. 11+94.06
 $\Delta = 9'16''11''$
 $R = 350'$
 $L = 56.62'$
 $T = 28.37'$
 PC STA. = 11+37.43
 PT STA. = 11+94.06

F.A.U. RTE.	SECTION	COUNTY	TOTAL SHEETS	SHEET NO.
8852	06-00056-01-WR	MADISON	81	18
STA. 10+00 TO STA. 15+00				
FED. ROAD DIST. NO.		ILLINOIS	FED. AID PROJECT	
PLAN AND PROFILE				

CONTRACT NO. 97324

DATE	BY

DATE	BY



BROADWAY