

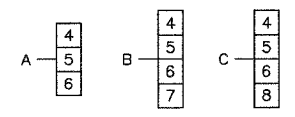
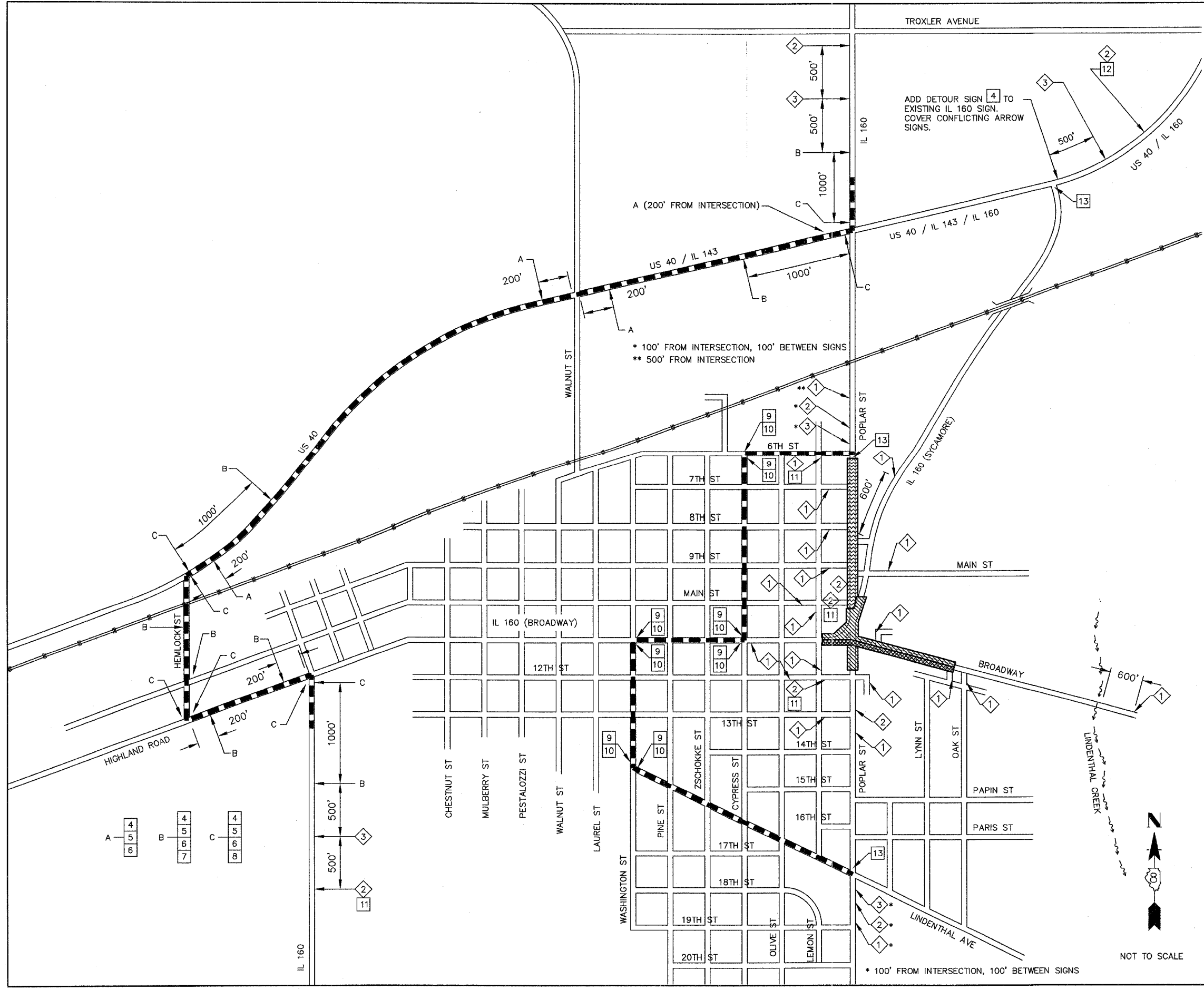
F.A.U. RTE.	SECTION	COUNTY	TOTAL SHEETS	SHEET NO.
8852	06-00056-01-WR	MADISON	81	22
STA.		TO STA.		
FED. ROAD DIST. NO.	ILLINOIS	FED. AID PROJECT		
TRAFFIC CONTROL PLAN				
CONTRACT NO. 97324				

LEGEND

- 1 ROAD CONSTRUCTION AHEAD (W20-1) (KEEP MOUNTED THROUGH ALL CONSTRUCTION)
- 2 ROAD CLOSED AHEAD (W20-3)
- 3 DETOUR AHEAD (W20-2)
- 4 DETOUR (M4-8)
- 5 CARDINAL DIRECTION (NORTH OR SOUTH AS APPROPRIATE)
- 6 IL ROUTE 160 (IDOT 12045)
- 7 DETOUR ADVANCE ARROW (M5-1) (ARROW AS APPROPRIATE)
- 8 DETOUR ARROW (M6-1) (ARROW AS APPROPRIATE)
- 9 "POPLAR ST" (4" BLACK LETTERS ON ORANGE)
- 10 DETOUR (M4-9) (ARROW AS APPROPRIATE)
- 11 24" x 24" (ORANGE)
- 12 24" x 24" (ORANGE)
- 13 TYPE III BARRICADES STAGGERED WITH R11-4 (ROAD CLOSED TO THRU TRAFFIC) AND M4-10 (DETOUR) SIGNS AND TYPE A LOW INTENSITY FLASHING LIGHTS
- STAGE 2 ROUNDABOUT CONSTRUCTION
- STAGE 3 ROUNDABOUT CONSTRUCTION
- POPLAR STREET WIDENING AND RESURFACING
- DETOUR ROUTE

NOTES

- 1 TYPE III BARRICADES AND ROAD CLOSURE SIGNS SHALL BE POSITIONED AS SHOWN, ACCORDING TO HIGHWAY STANDARD 702001 AND AS DIRECTED BY THE ENGINEER.
- 2 TYPE A LOW INTENSITY FLASHING WARNING LIGHTS SHALL BE USED ON EACH SIGN IN ADVANCE OF THE WORK DURING HOURS OF DARKNESS.
- 3 ALL WARNING SIGNS SHALL BE A MINIMUM OF 48" x 48" AND HAVE A BLACK LEGEND AND BORDER ON A FLUORESCENT ORANGE REFLECTORIZED BACKGROUND.
- 4 THE CONTRACTOR SHALL MAINTAIN ACCESS TO ENTRANCES AT ALL TIMES.
- 5 LONGITUDINAL DISTANCES MAY BE ADJUSTED TO FIT FIELD CONDITIONS.
- 6 ALL TYPE III BARRICADES UTILIZED FOR ROAD CLOSURES SHALL HAVE A LOW INTENSITY FLASHING LIGHT MOUNTED ON TOP OF EACH BARRICADE.
- 7 EXACT LOCATION OF ALL WARNING SIGNS AND BARRICADES SHALL BE STAKED IN THE FIELD FOR APPROVAL BY THE ENGINEER PRIOR TO INSTALLATION.
- 8 ALL BUSINESSES AND RESIDENTS FRONTING THE PROJECT SHALL BE NOTIFIED AT LEAST 48 HOURS PRIOR TO ROAD CLOSURES AFFECTING THEIR ACCESS.
- 9 SEE HIGHWAY STANDARD 701201 FOR DAYTIME SINGLE LANE CLOSURES.
- 10 ROAD CONSTRUCTION AHEAD SIGNS SHALL BE MOUNTED THROUGH ALL OF THE IMPROVEMENTS TO BOTH THE INTERSECTION AND POPLAR STREET.



* 100' FROM INTERSECTION, 100' BETWEEN SIGNS