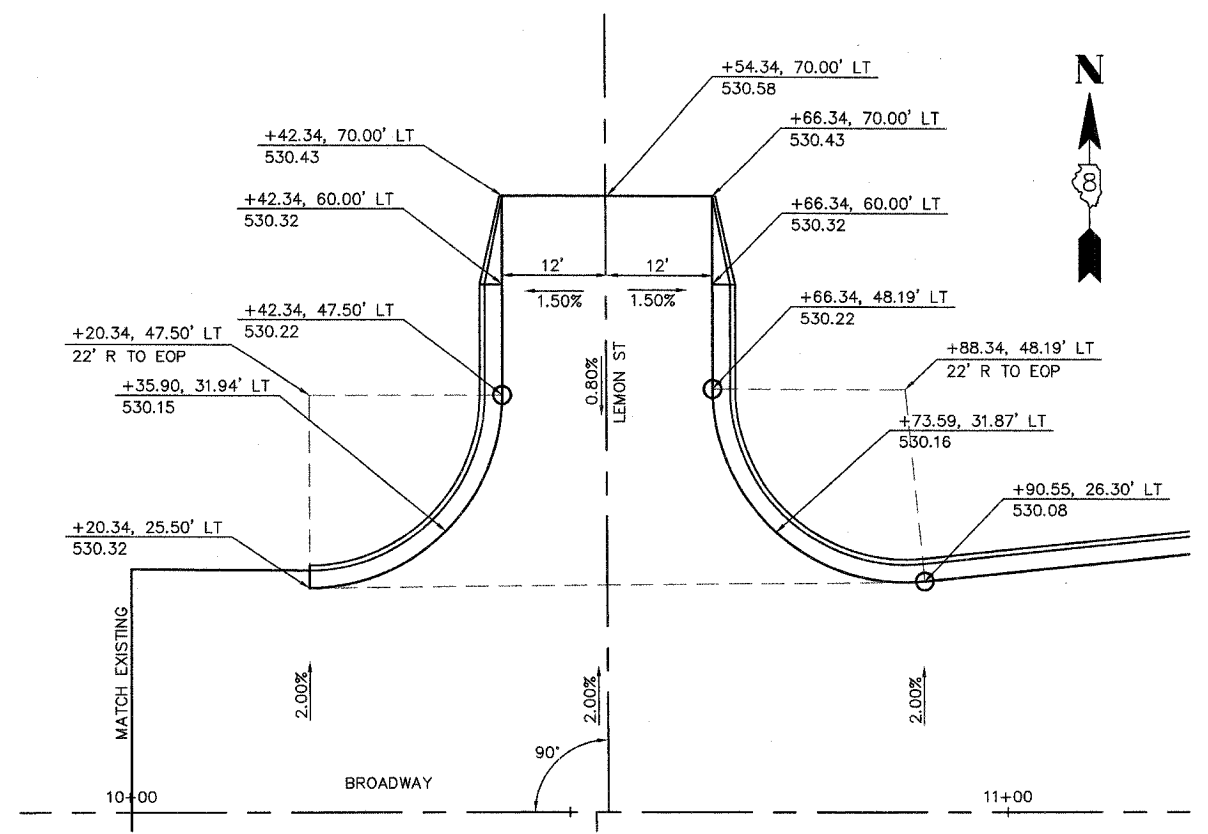
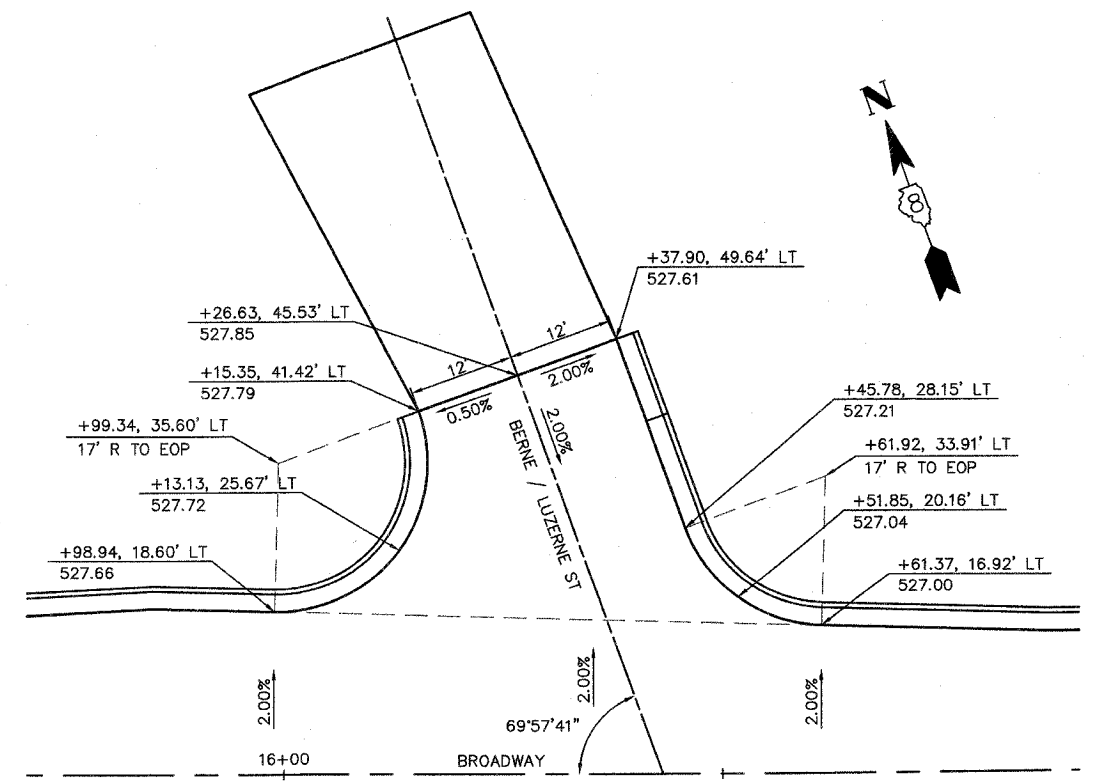


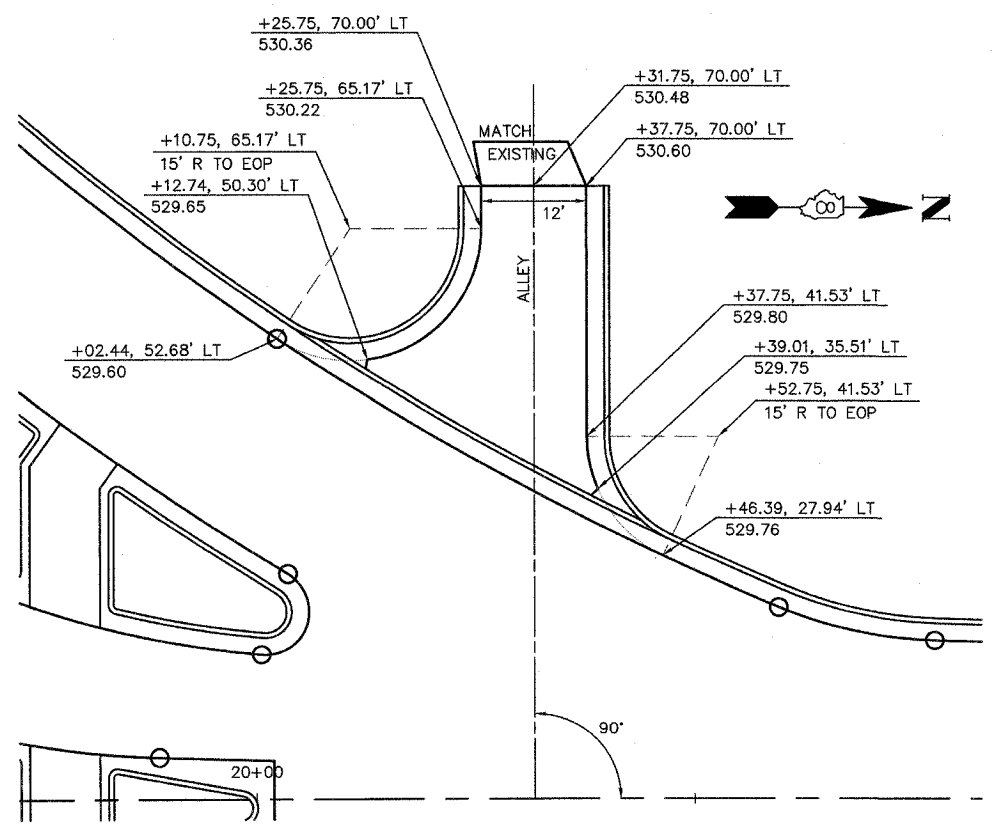
F.A.U. RTE.	SECTION	COUNTY	TOTAL SHEETS	SHEET NO.
8852	06-00056-01-WR	MADISON	81	41
STA.		TO STA.		
FED. ROAD DIST. NO.		ILLINOIS	FED. AID PROJECT	
INTERSECTION DETAILS				
CONTRACT NO. 97324				



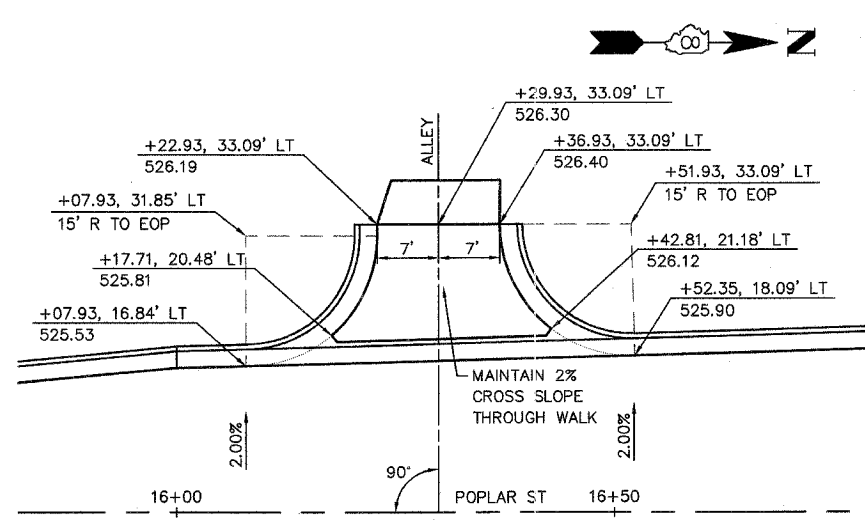
**BROADWAY INTERSECTION WITH LEMON STREET**  
NOT TO SCALE



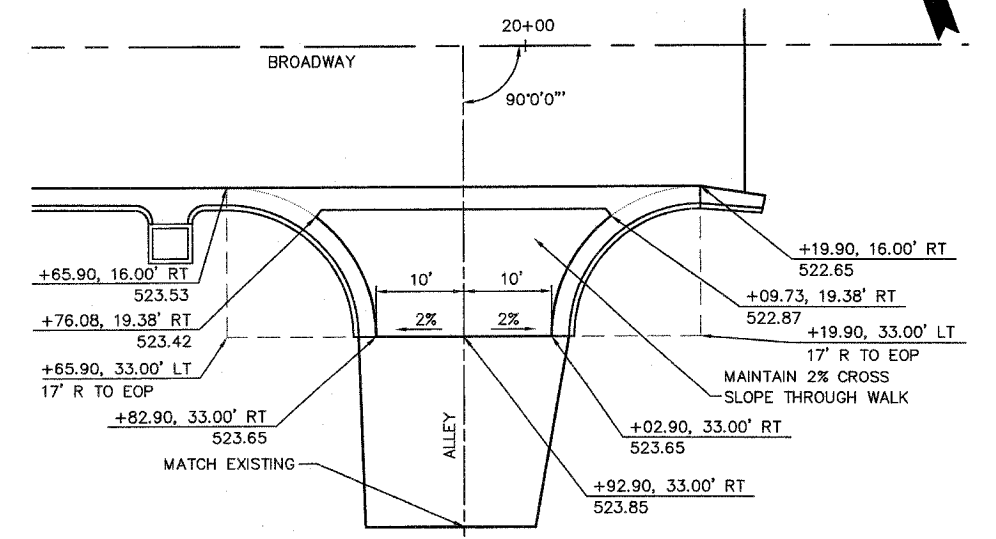
**BROADWAY INTERSECTION WITH BERNE / LUZERNE STREET**  
NOT TO SCALE



**POPLAR STREET INTERSECTION WITH OIL AND CHIP ALLEY**  
NOT TO SCALE



**POPLAR STREET INTERSECTION WITH OIL AND CHIP ALLEY**  
NOT TO SCALE



**BROADWAY INTERSECTION WITH OIL AND CHIP ALLEY**  
NOT TO SCALE