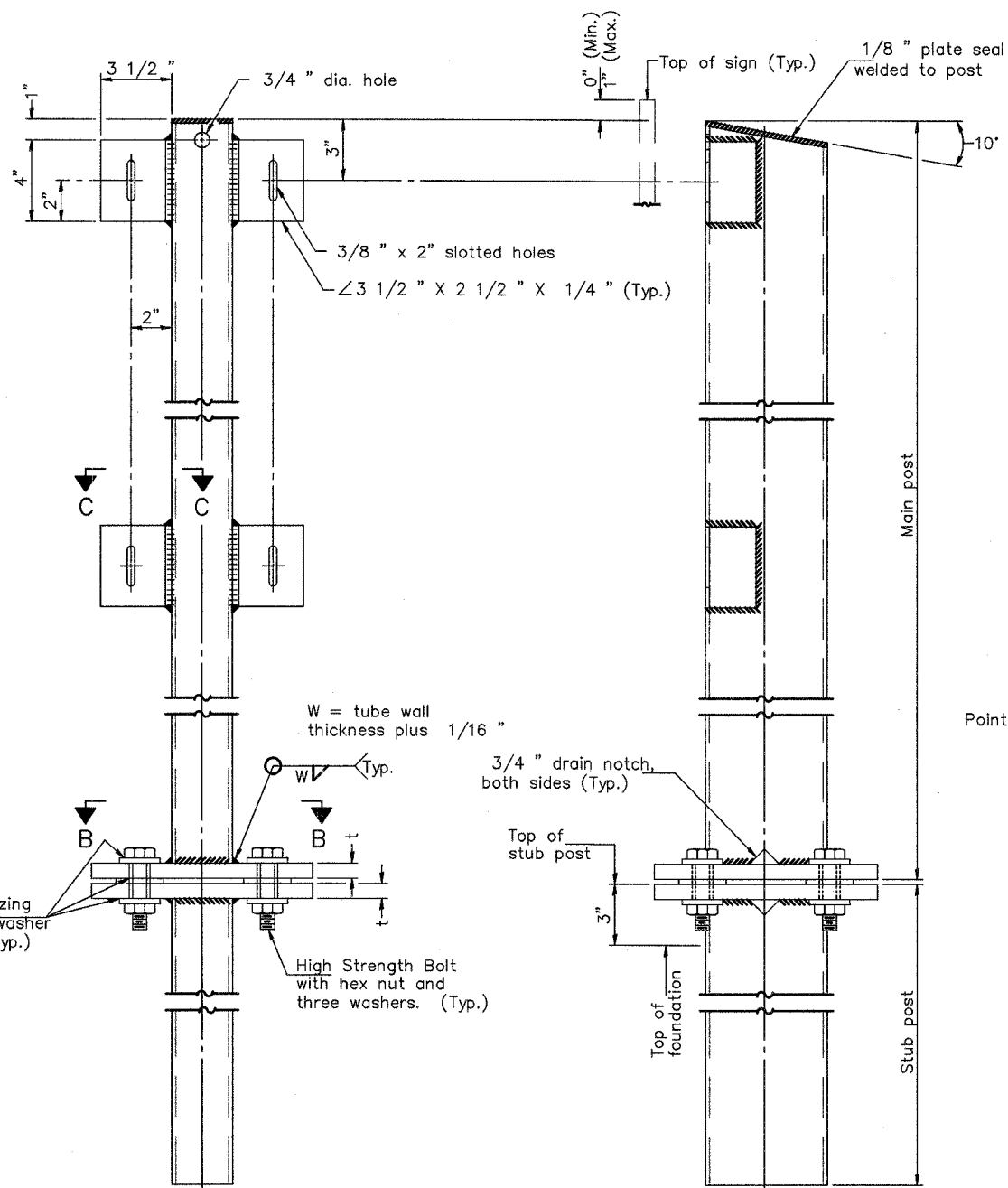


STATE OF ILLINOIS
DEPARTMENT OF TRANSPORTATION

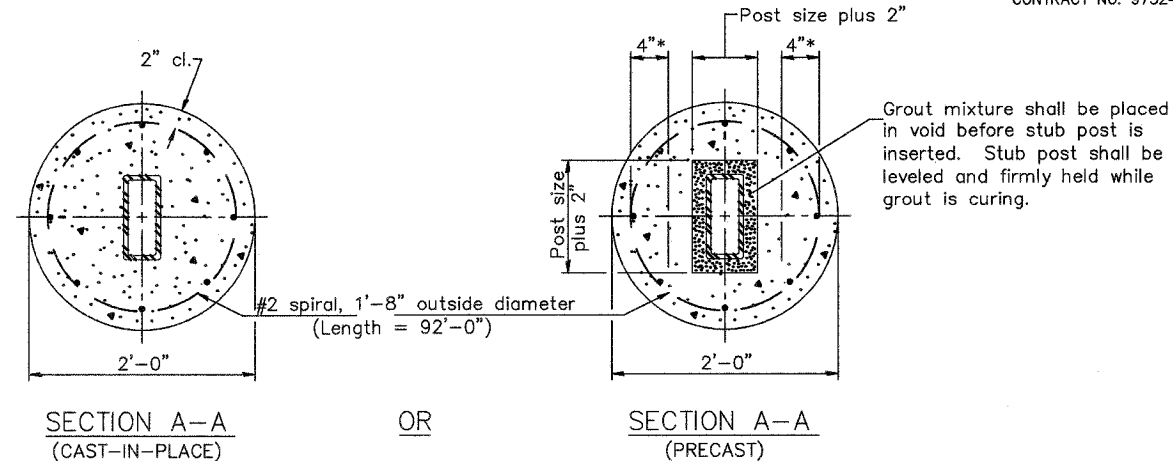
F.A.U. RTE.	SECTION	COUNTY	TOTAL SHEETS	SHEET NO.
8852	06-00056-01-WR	MADISON	81	56
STA.		TO STA.		
FED. ROAD DIST. NO.		ILLINOIS	FED. AID PROJECT	
SIGNING PLAN, SCHEDULE & DETAILS				
CONTRACT NO. 97324				



FRONT ELEVATION

SIDE ELEVATION

MAIN POST & STUB POST

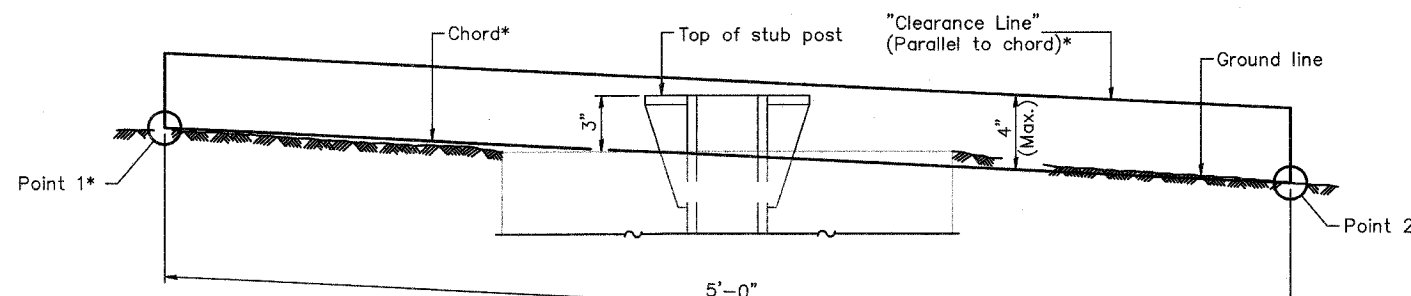


SECTION A-A
(CAST-IN-PLACE)

OR

SECTION A-A
(PRECAST)

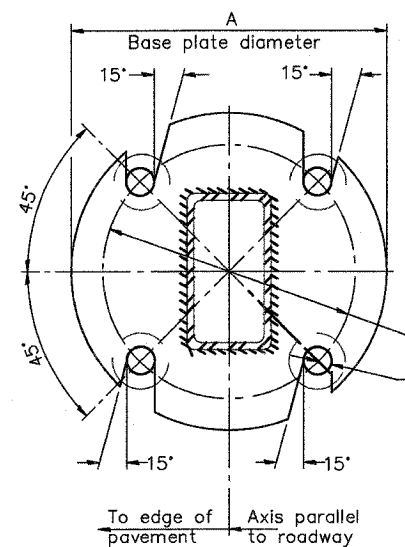
*Hot dip galvanized lifting loops or inserts may be placed in precast foundation inside the spiral reinforcement but not within 6" of the long axis of the post. Inserts must be adequate for safely lifting a total of 3,000 pounds and must not interfere with installation of the stub post or proper functioning of the slip base.



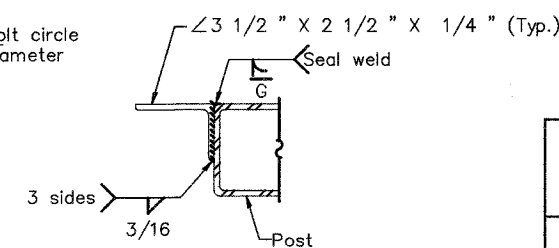
ELEVATION

GROUND LINE & STUB POST

*For all "Point 1" and "Point 2" locations, "Clearance Line" must be at or above top of stub post.

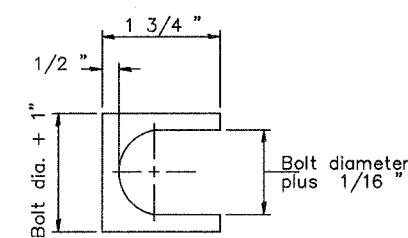


SECTION B-B



SECTION C-C

Weld continuously around corners.



SHIM DETAIL

Furnish two 0.01" thick and two 0.03" thick stainless steel or brass (ASTM B36) shims per post.

BREAK-AWAY TUBULAR STEEL
SIGN POSTS AND DETAILS