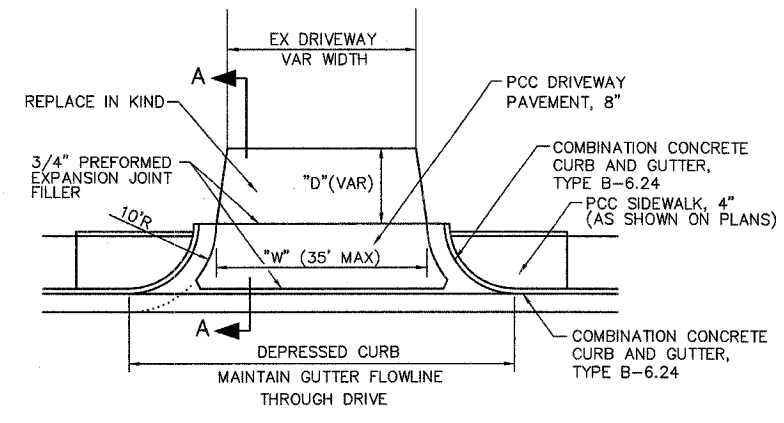
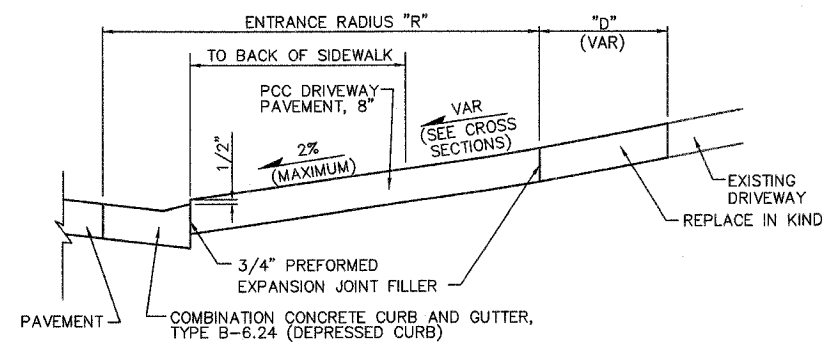


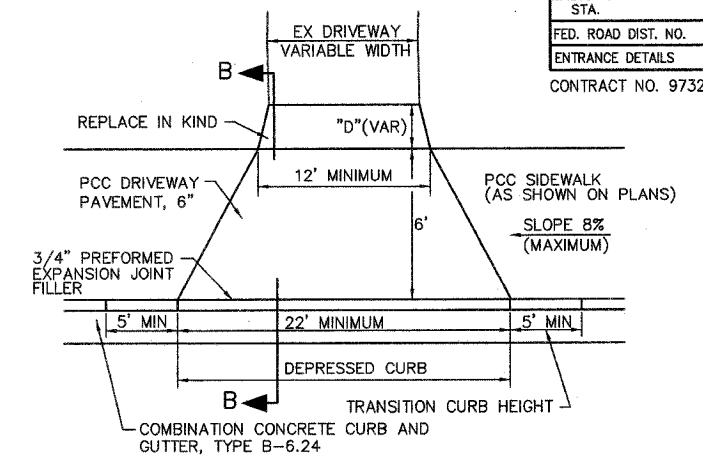
F.A.U. RTE.	SECTION	COUNTY	TOTAL SHEETS	SHEET NO.
8852	06-00056-01-WR	MADISON	81	57
STA.		TO STA.		
FED. ROAD DIST. NO.		ILLINOIS FED. AID PROJECT		
ENTRANCE DETAILS				
CONTRACT NO. 97324				



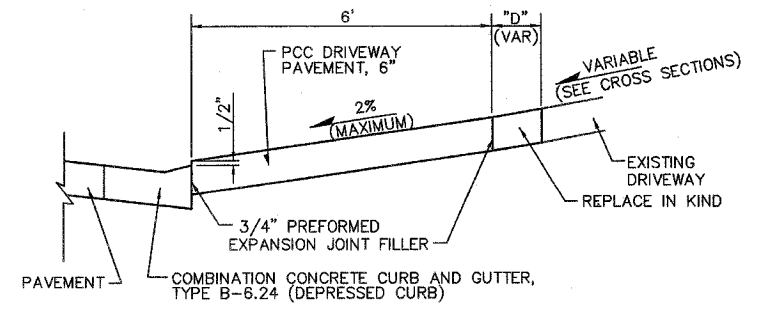
TYPICAL COMMERCIAL ENTRANCE DETAIL
(NOT TO SCALE)



SECTION A-A
(NOT TO SCALE)



TYPICAL PRIVATE ENTRANCE DETAIL
(NOT TO SCALE)

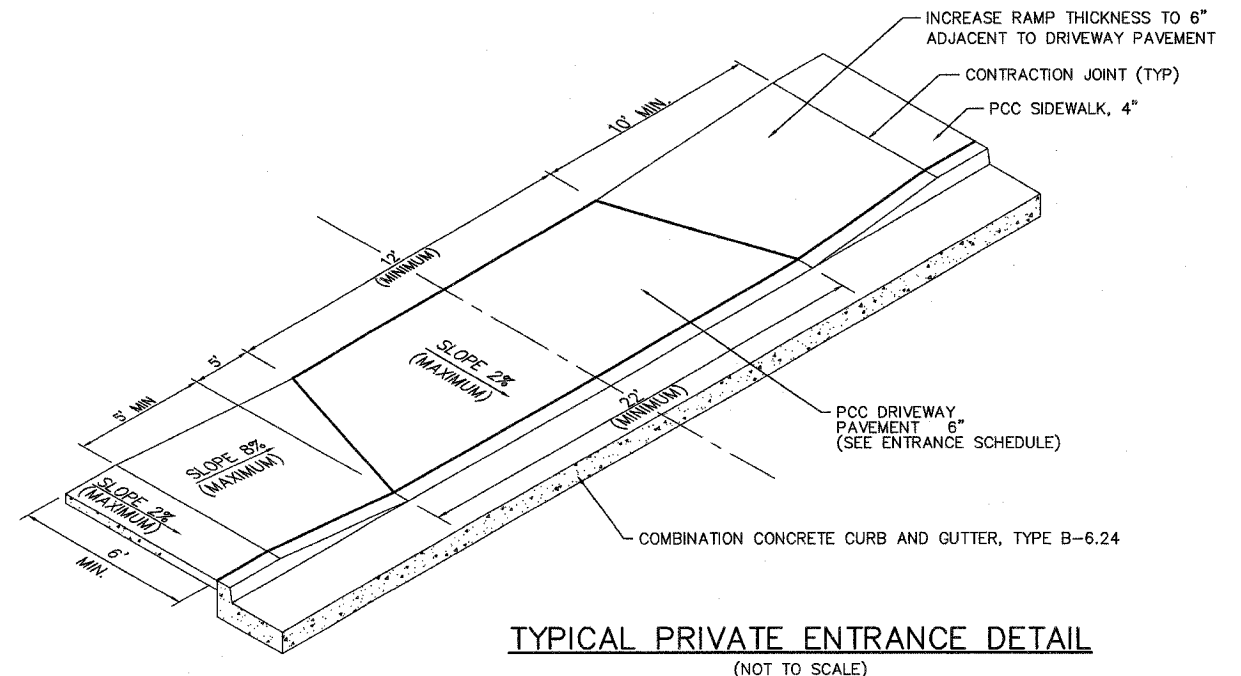


SECTION B-B
(NOT TO SCALE)

ENTRANCE SCHEDULE

STATION (NOTE 1)	OFFSET	ENTRANCE TYPE	ENTRANCE WIDTH "W" (NOTE 1) (FOOT)	ENTRANCE DEPTH "D" (FOOT)	EXISTING SURFACE TYPE	AGG BASE CSE A 6 (SQ YD)	AGG SURF CSE A 6 (SQ YD)	INCIDENTAL HMA SURF (NOTE 2) (TON)	PCC DRIVEWAY PAVT 6 (NOTE 3) (SQ YD)	PCC DRIVEWAY PAVT 8 (NOTE 3) (SQ YD)	DRIVE PAVEMENT REM (SQ YD)
POPLAR STREET											
16+18	RT	CE	18	10	AGGREGATE		40			30	
16+30	LT	ALLEY	14	5	OIL & CHIP	7		1		26	13
19+37	LT	CE	TBR		CONCRETE						34
19+60	RT	PE	TBR		ASPHALT						67
20+31.75	LT	ALLEY	12	5	OIL & CHIP	6		1		55	42
20+46	56' LT	CE	16		CONCRETE					14	20
21+87	58' LT	CE	12	3	CONCRETE					17	16
22+45 TO 24+48	RT	CE	TBR		ASPHALT						139
24+78 TO 25+39	RT	CE	TBR		ASPHALT						28
26+94	LT	CE	12	16	AGGREGATE		19		13		5
27+55.50	LT	ALLEY	15	5	OIL & CHIP	9		2		26	13
28+50	LT	CE	TBR		CONCRETE						24
29+33	RT	PE	24	13	AGG / CONC		21		33		36
29+92	RT	PE	13	36	ASPHALT	40		5	12		53
30+58	RT	PE	12	35	ASPHALT	41		5	11		48
31+18	RT	PE	12	22	AGGREGATE		30		11		
31+78	RT	PE	12	29	AGGREGATE		36		11		
31+97	RT	PE	12	5	AGGREGATE		6		11		
32+45	RT	PE	24	10	AGG / CONC		14		31		15
33+11	RT	PE	12	5	CONCRETE				17		19
33+76	RT	PE	16	13	AGGREGATE		23		14		
IL ROUTE 160 / BROADWAY											
11+75	LT	PE	12	16	CONCRETE				30		9
12+17	RT	PE	12	6	AGGREGATE		15		10		
15+75	RT	PE	12	21	AGGREGATE		25		29		4
16+73	LT	PE	12	10	CONCRETE				22		31
16+84	RT	PE	18	18	CONCRETE				53		28
17+12	RT	PE	12	22	CONCRETE				30		20
17+47	LT	PE	12	5	CONCRETE				17		21
18+23	LT	PE	14	11	CONCRETE				28		32
18+25	RT	PE	16	10	AGGREGATE		14		14		5
19+15	LT	PE	12	10	AGGREGATE		12		11		
19+34	LT	PE	12	10	AGGREGATE		12		11		
19+92.90	RT	ALLEY	20	22	OIL & CHIP	53		7		40	8
21+21	LT	PE	18	10	CONCRETE				35		38
22+20	LT	PE	12	10	AGGREGATE		11		11		
23+47	LT	PE	12	26	CONCRETE				43		38
24+36	LT	PE	20	18	CONCRETE				53		64
25+18	LT	PE	12	5	ASPHALT	6		1	11		15
26+32	LT	CE	16	12.5	AGGREGATE		20		15		
TOTAL						162	298	22	587	208	885

- ENTRANCE NOTES:**
- PRIOR TO CONSTRUCTION, THE CONTRACTOR SHALL CONTACT EACH PROPERTY OWNER AND VERIFY THE LOCATION AND WIDTH OF ALL ENTRANCES.
 - INCIDENTAL HOT-MX ASPHALT SURFACING QUANTITY IS CALCULATED AT A RATE OF 120 LB / SQ YD. BITUMINOUS MATERIALS (PRIME COAT) AND AGGREGATE (PRIME COAT) ARE REQUIRED BUT WILL NOT BE MEASURED SEPARATELY FOR PAYMENT. THE COST FOR BITUMINOUS MATERIALS AND AGGREGATE SHALL BE INCLUDED IN THE CONTRACT UNIT PRICE FOR INCIDENTAL HOT-MX ASPHALT SURFACING.
 - DEPRESSED CURB AND GUTTER THROUGH ENTRANCES SHALL BE MEASURED FOR PAYMENT AS COMBNATION CONCRETE CURB AND GUTTER, TYPE B-6.24.



TYPICAL PRIVATE ENTRANCE DETAIL
(NOT TO SCALE)