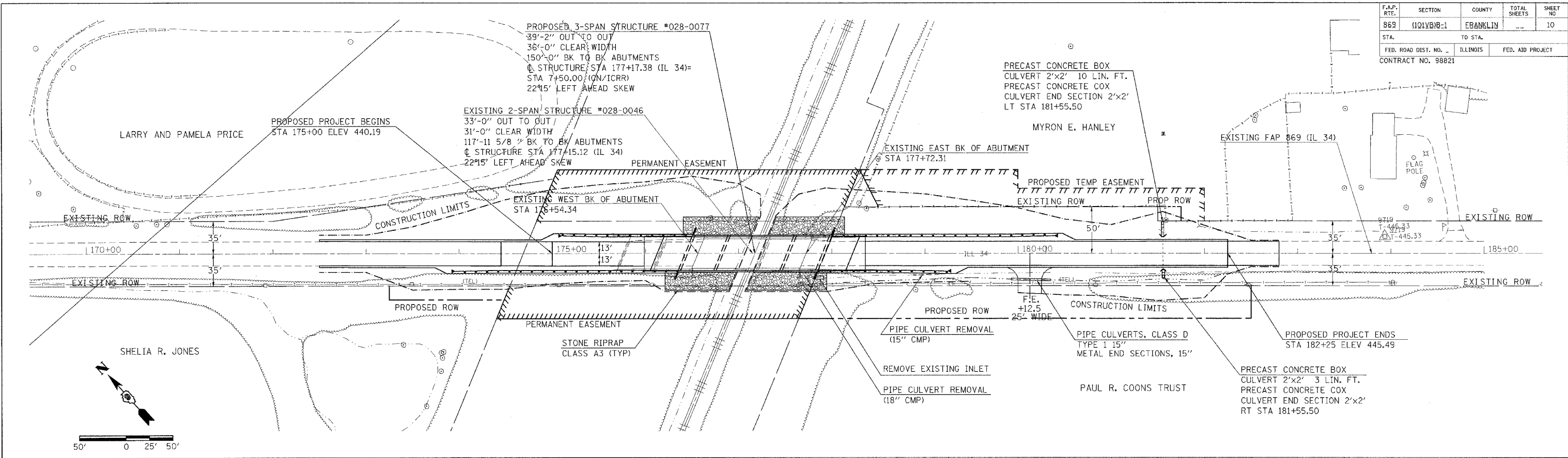
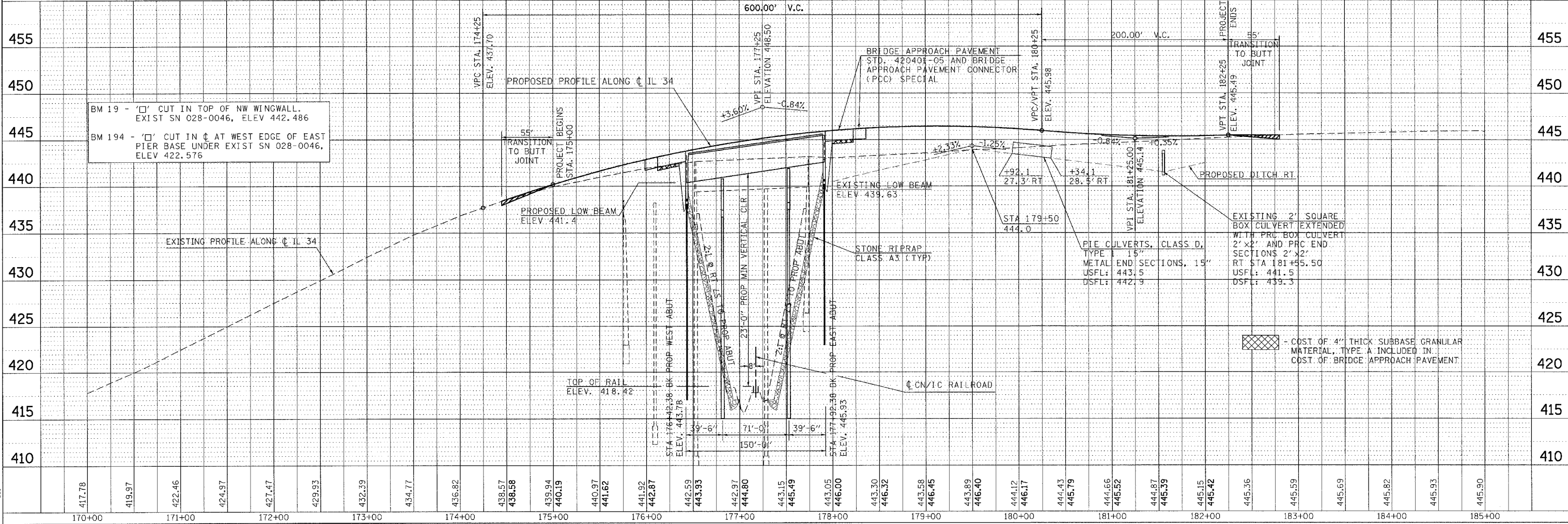


F.A.P. RTE.	SECTION	COUNTY	TOTAL SHEETS	SHEET NO
869	101VBR-1	EBANKLIN	10	10
STA.	TO STA.		FED. AID PROJECT	
	ILLINOIS		CONTRACT NO. 98821	



DATE	BY
DATE	BY
DATE	BY

DATE	BY
DATE	BY
DATE	BY



BM 19 - '□' CUT IN TOP OF NW WINGWALL, EXIST SN 028-0046, ELEV 442.486
 BM 194 - '□' CUT IN □ AT WEST EDGE OF EAST PIER BASE UNDER EXIST SN 028-0046, ELEV 422.576

▨ - COST OF 4" THICK SUBBASE GRANULAR MATERIAL, TYPE A INCLUDED IN COST OF BRIDGE APPROACH PAVEMENT

18/1/2007
 c:\p\projects\181823\181823.dwg
 5/2/2007 / JN

PLAN /PROFILE ON IL 34 /STR NO. 028-0046 OVER CN /IC RR