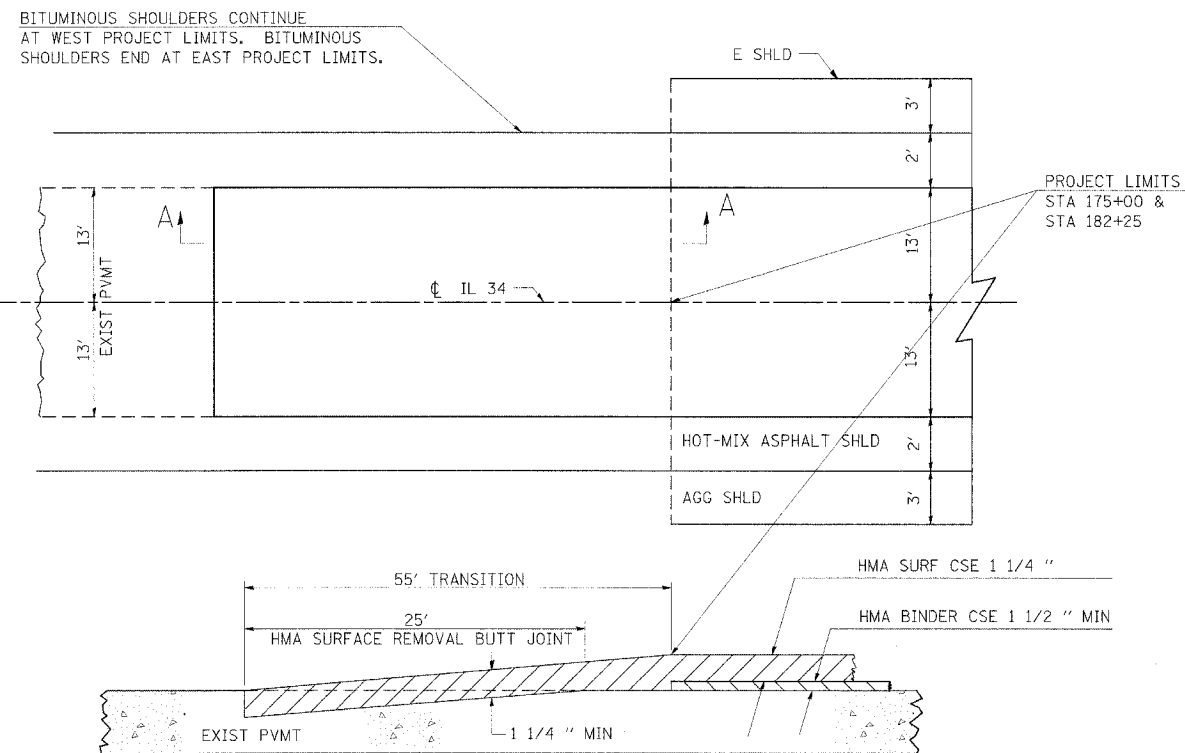


F.A.P. RITE.	SECTION	COUNTY	TOTAL SHEETS	SHEET NO.
869	101YB1B-1	ERANKLIN	--	16
STA.	TO STA.			
FED. ROAD DIST. NO. _	ILLINOIS	FED. AID PROJECT		
CONTRACT NO. 98821				

BUTT JOINT



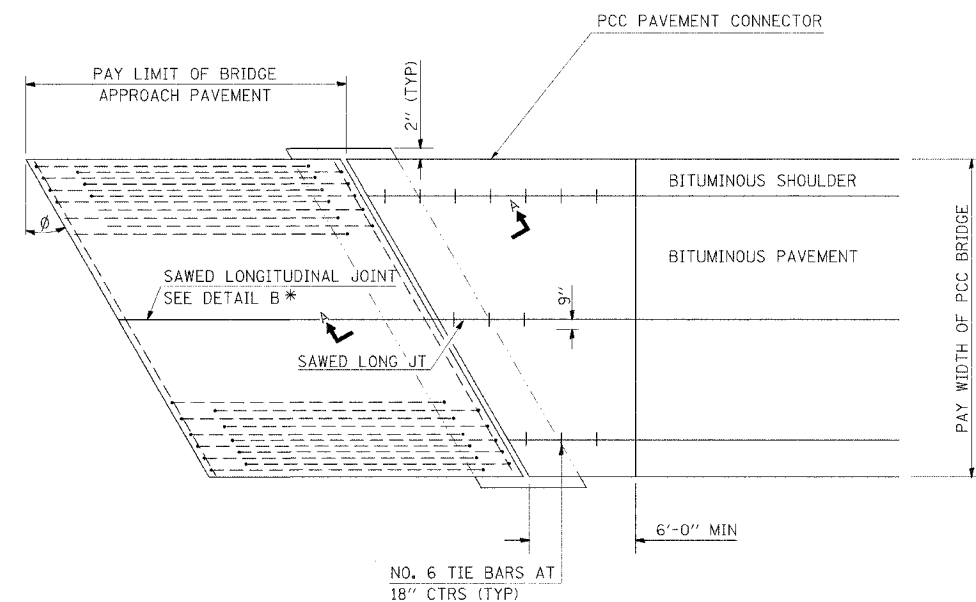
SECTION A-A

REVISIONS

DRAWN	10-17-90
REVISED	01-11-91
REVISED	
REVISED	

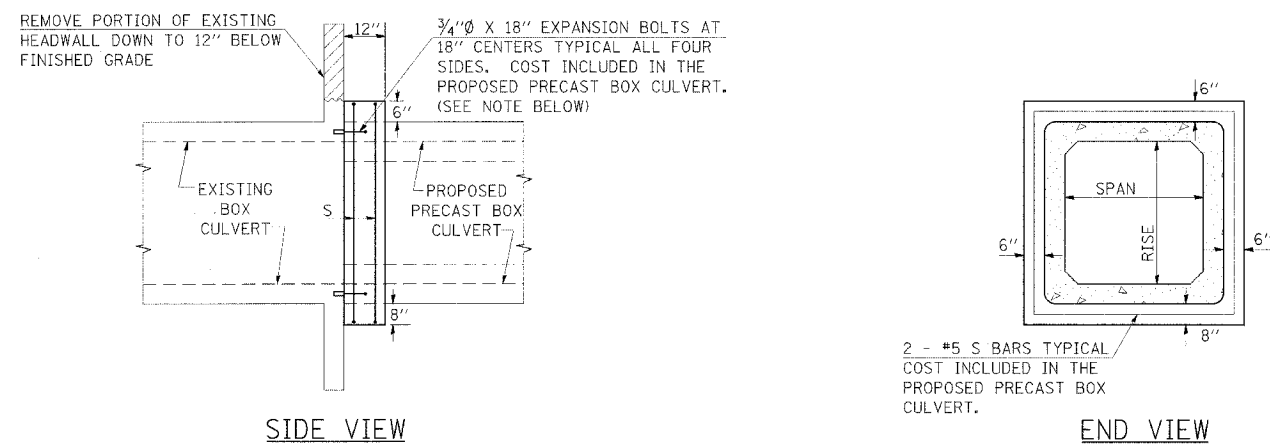
STD. _9-86

PCC PAVEMENT CONNECTOR



BRIDGE APPROACH PAVEMENT CONNECTOR (PCC) SPECIAL
(MODIFICATION TO STD 420401)

DETAILS OF CONCRETE COLLAR FOR PRECAST BOX CULVERT



REMOVE PORTION OF EXISTING HEADWALL DOWN TO 12" BELOW FINISHED GRADE

EXISTING BOX CULVERT

PROPOSED PRECAST BOX CULVERT

TABULATION
(FOR INFORMATION PURPOSES ONLY)

SPAN X RISE	CLASS SI CONC. CU. YD. (EST.)
2' X 2'	0.26
3' X 2'	0.30
3' X 3'	0.34
4' X 2'	0.36
4' X 3'	0.39
4' X 4'	0.43
5' X 2'	0.41
5' X 3'	0.45
5' X 4'	0.49
6' X 2'	0.47
6' X 3'	0.51
6' X 4'	0.54

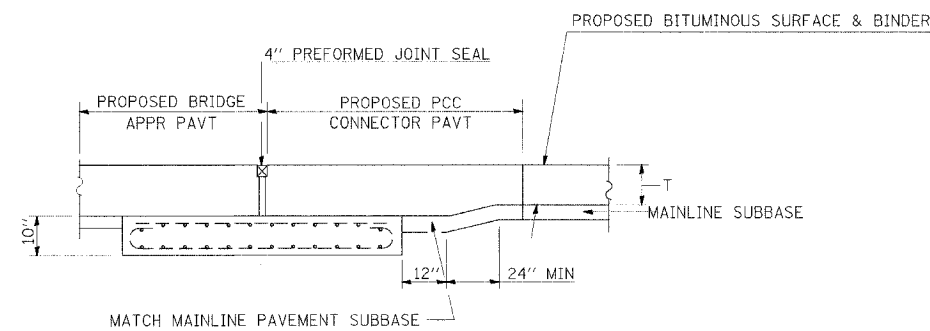
NOTE:

ANCHOR BOLTS, MEETING THE REQUIREMENTS OF ARTICLE 1006.09 OF THE STANDARD SPECIFICATIONS, SHALL EXTEND A MINIMUM OF 9 INCHES INTO THE NEW CONCRETE. EXPANSION SHIELDS SHALL PROVIDE A MINIMUM CERTIFIED PROOF LOAD OF 4080 POUNDS.

REVISIONS

DRAWN	8-15-93	REVISED	12-17-01
REVISED	2-15-90	REVISED	
REVISED	8-10-90	REVISED	
REVISED	8-19-94	REVISED	

STD. _9-45



SECTION A-A

DETAILS: BUTT JOINT; CONCRETE COLLAR FOR PRECAST BOX CULVERT; PCC PAVEMENT CONNECTOR