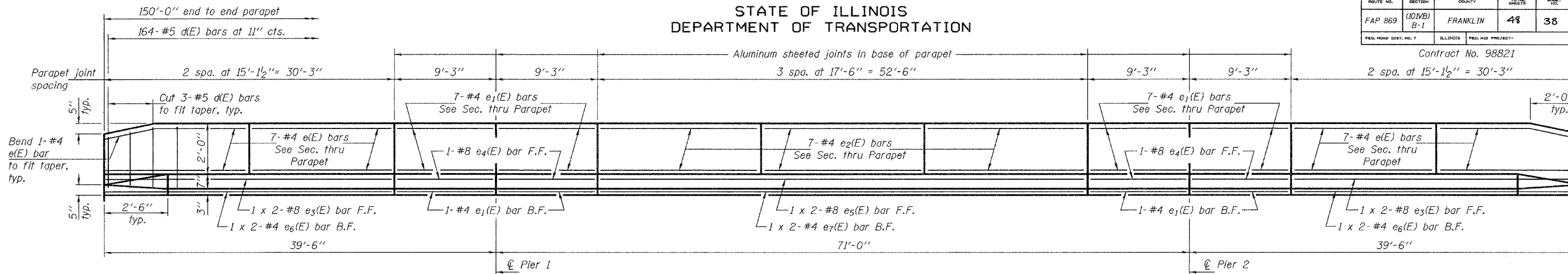


STATE OF ILLINOIS  
DEPARTMENT OF TRANSPORTATION

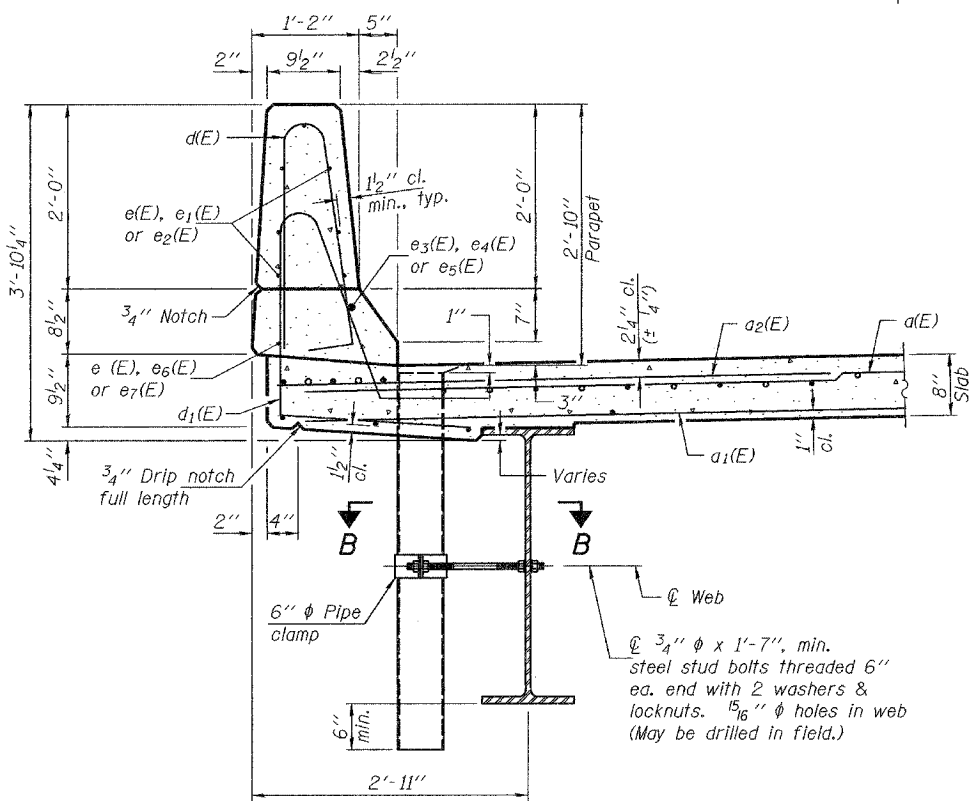
ROUTE NO.	SECTION	COUNTY	TOTAL SHEETS	SHEET	SHEET NO. 9 18 SHEETS
FAP 869	(101VB) B-1	FRANKLIN	48	38	
FED. ROAD DIST. NO. 7	ILLINOIS	FED. AID PROJECT-			

Contract No. 98821

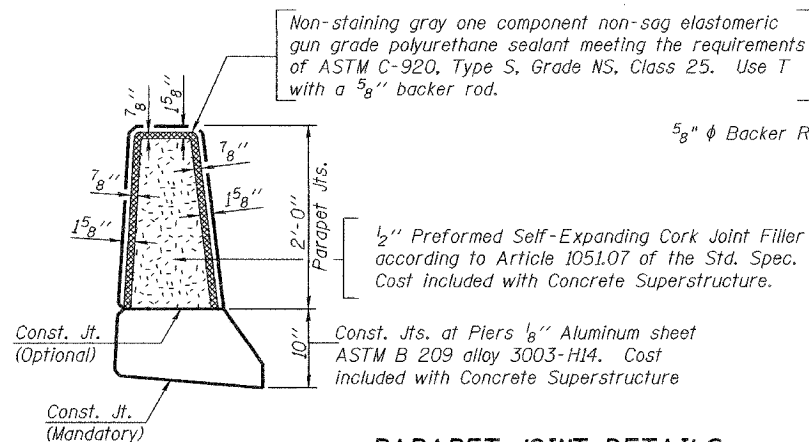


INSIDE ELEVATION OF PARAPET

Note: Cut e(E) bars as needed to fit at end of parapet.



SECTION THRU PARAPET



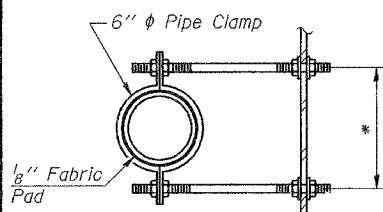
PARAPET JOINT DETAILS

Notes:  
The exterior surfaces of the floor drains need not be painted.  
Fiberglass pipe shall conform to ASTM D 2996, with short-time rupture strength hoop tensile stress of 30,000 p.s.i. minimum.

SUPERSTRUCTURE  
BILL OF MATERIAL

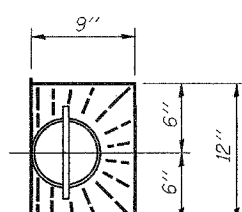
Bar	No.	Size	Length	Shape
a(E)	299	#5	38'-6"	—
a1(E)	179	#5	36'-10"	—
a2(E)	598	#6	6'-0"	—
a3(E)	4	#5	39'-10"	—
b(E)	210	#5	31'-9"	—
b1(E)	78	#6	27'-6"	—
b2(E)	216	#5	26'-9"	—
d(E)	328	#5	5'-7"	—
d1(E)	328	#5	7'-9"	—
e(E)	56	#4	14'-10"	—
e1(E)	64	#4	9'-0"	—
e2(E)	42	#4	17'-3"	—
e3(E)	8	#8	16'-10"	—
e4(E)	8	#8	9'-0"	—
e5(E)	4	#8	27'-10"	—
e6(E)	8	#4	15'-8"	—
e7(E)	4	#4	26'-10"	—
m(E)	4	#6	40'-0"	—
m1(E)	6	#6	42'-0"	—
m2(E)	24	#6	9'-4"	—
m3(E)	10	#6	7'-0"	—
m4(E)	4	#6	2'-10"	—
s(E)	82	#5	5'-9"	—
s1(E)	72	#4	8'-10"	—
v(E)	76	#5	3'-4"	—
Reinforcement Bars, Epoxy Coated		Pound	49890	
Concrete Superstructure		Cu. Yds.	209.0	

Bars indicated thus 1 x 2-#5 etc. indicates 1 line of bars with 2 lengths per line.

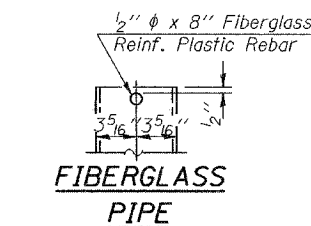


SECTION B-B

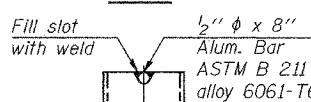
\*Dimension as required by Pipe Clamp



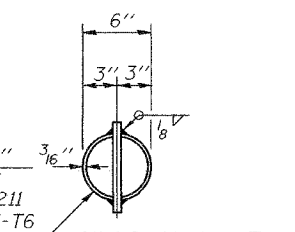
TOP PLAN



FIBERGLASS PIPE

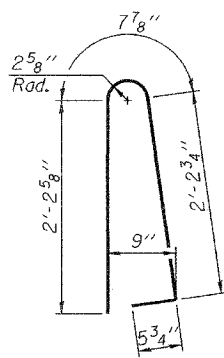


ALUMINUM TUBE

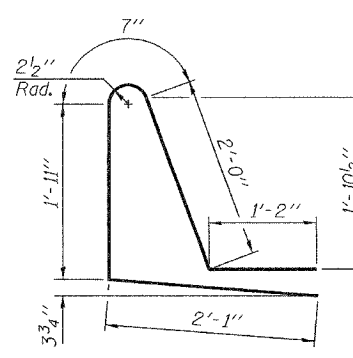


TOP PLAN

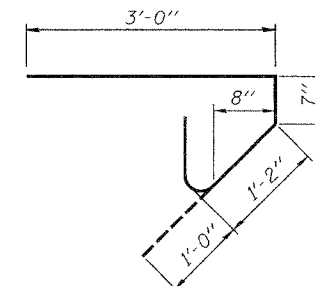
(Showing Aluminum Tube)



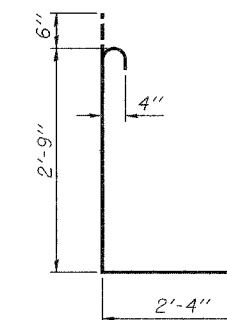
BAR d(E)



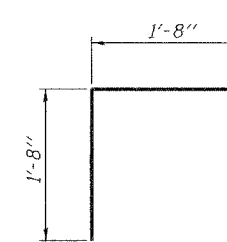
BAR d1(E)



BAR s(E)



BAR s1(E)



BAR v(E)

MIN. BAR LAPS

(Parapet)  
#4 bar = 1'-4"  
#8 bar = 3'-5"

SUPERSTRUCTURE DETAILS  
F.A.P. RTE. 869 - SEC. (101VB)B-1  
FRANKLIN COUNTY  
STATION 177+17.38  
STRUCTURE NO. 028-0077

DESIGNED	Dewey H. Coultas
CHECKED	Ray Ahanchi
DRAWN	h.t. duong
CHECKED	DHC/GRA

EXAMINED	Thomas D. Damagala	Nov. 30, 2007
PASSED	Ralph E. Anderson	