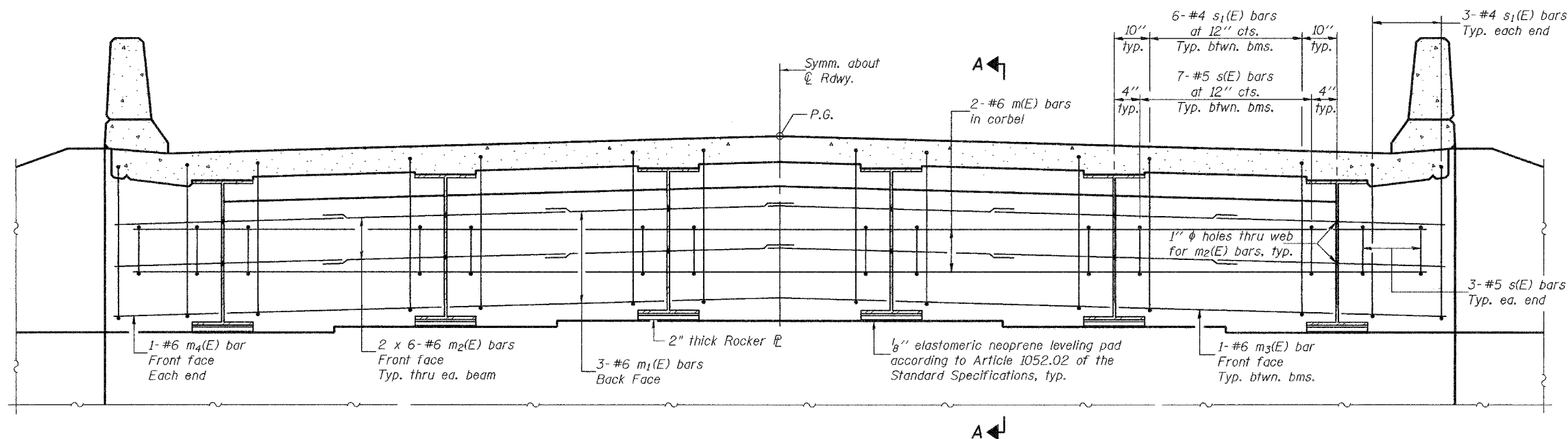


STATE OF ILLINOIS
DEPARTMENT OF TRANSPORTATION

ROUTE NO.	SECTION	COUNTY	TOTAL SHEETS	SHEET NO.	SHEET NO. 10
FAP 869	(10IVB) B-1	FRANKLIN	48	39	18 SHEETS
FED. ROAD DIST. NO. 7	ILLINOIS	FED. AID PROJECT			

Contract No. 98821

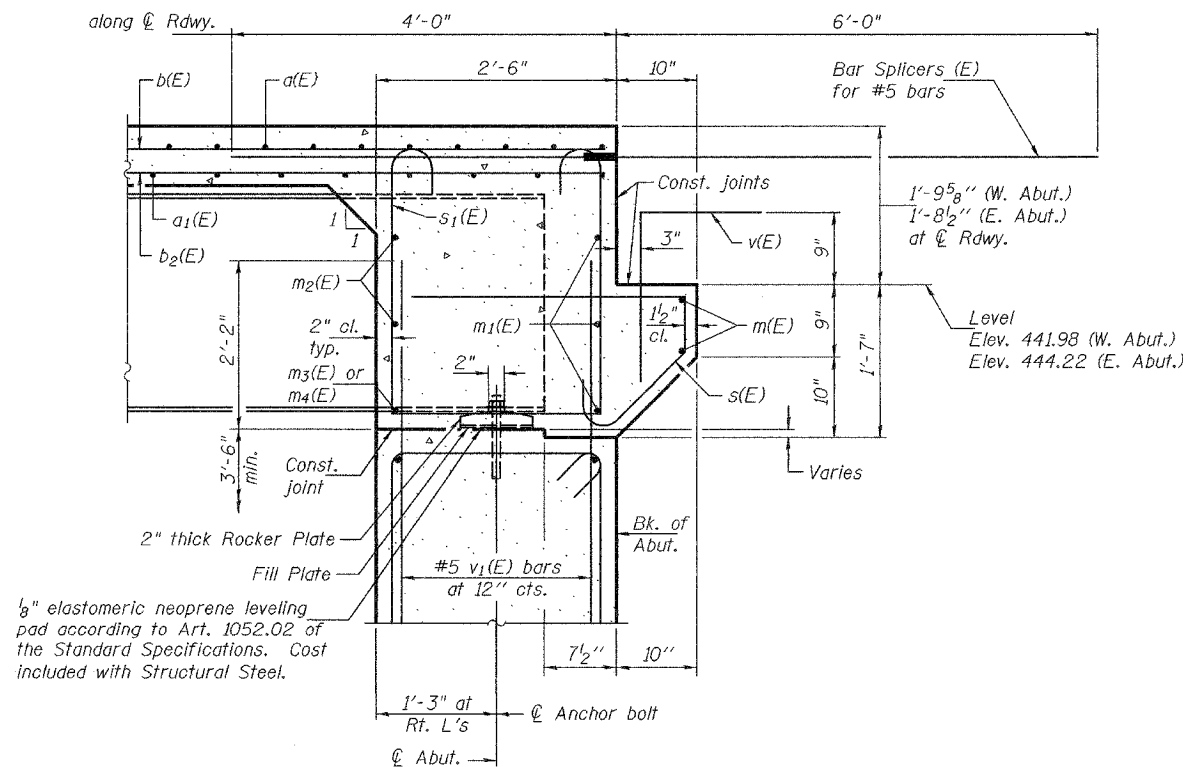


DIAPHRAGM ELEVATION AT ABUTMENT

Notes: Reinforcement bars in diaphragm are billed with superstructure on sheet 9 of 18.
Concrete in diaphragm is included with Concrete Superstructure on sheet 9 of 18.
For details of bars s(E) & s₁(E) see sheet 9 of 18.
The s(E) and s₁(E) bars shall be placed parallel to the beams. Spacing for these bars shall be at right angles to the beams.

MIN. BAR LAP

#6 bar = 2'-9"



SECTION A-A

Dimensions at right angles to abutment, except as shown.

DESIGNED	Dewey H. Coultas
CHECKED	Ray Ahanchi
DRAWN	h.t. duong
CHECKED	DHC/GRA

Nov. 30, 2007
EXAMINED *Thomas J. Domagala*
PASSED *Ralph E. Anderson*
ENGINEER OF BRIDGES AND STRUCTURES

DIAPHRAGM DETAILS
F.A.P. RTE. 869 - SEC. (10IVB)B-1
FRANKLIN COUNTY
STATION 177+17.38
STRUCTURE NO. 028-0077