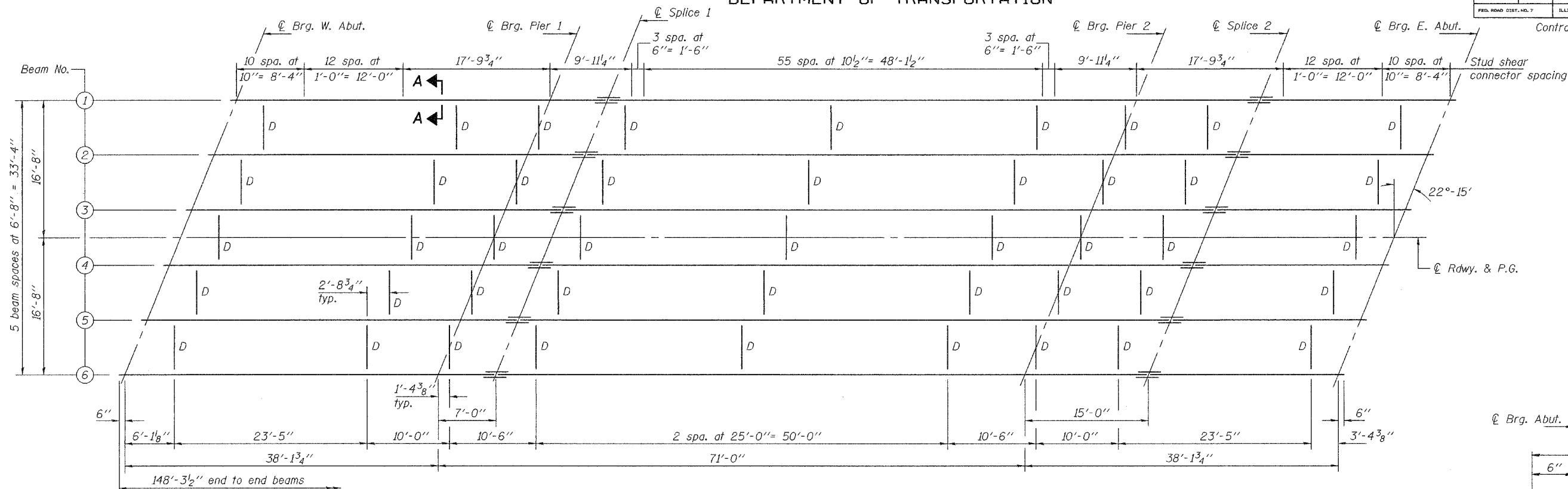


STATE OF ILLINOIS
DEPARTMENT OF TRANSPORTATION

ROUTE NO.	SECTION	COUNTY	SHEET	OF SHEET
FAP 869	(101VB) B-1	FRANKLIN	48	40
FED. ROAD DIST. NO. 7		ILLINOIS	FED. AID PROJECT-	

SHEET NO. 11
18 SHEETS

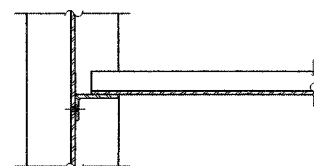
Contract No. 98821



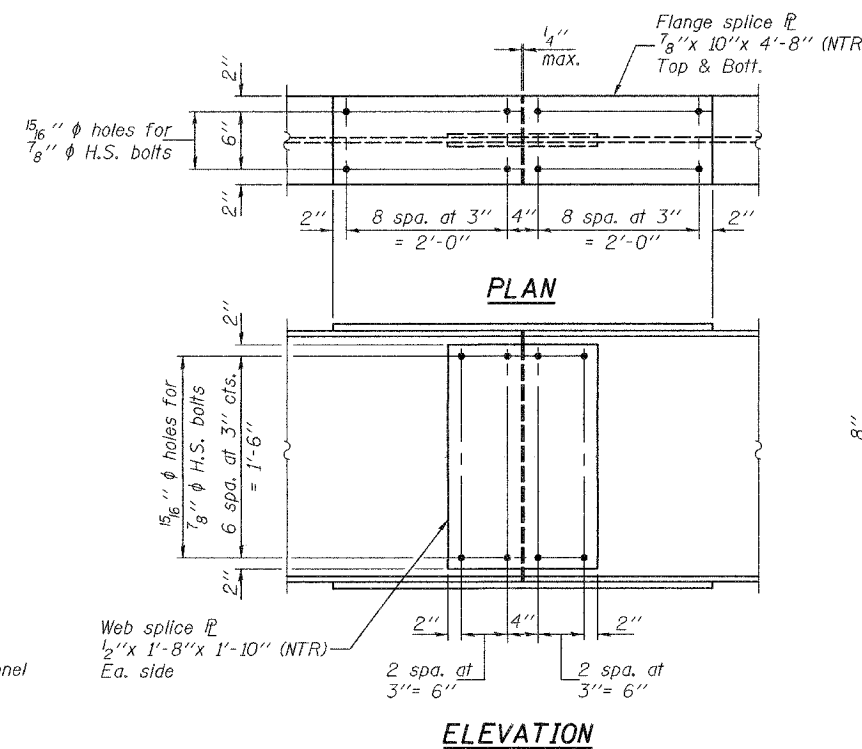
PLAN

All beams are W27x114 (NTR)

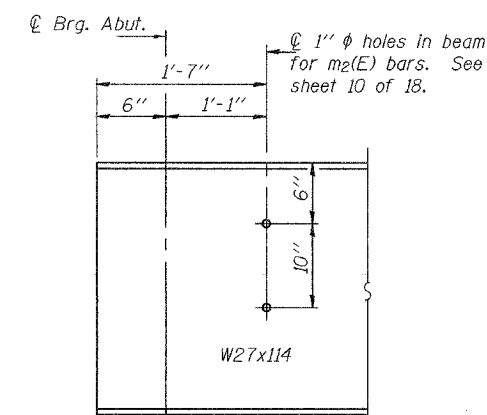
Notes: Load carrying components designated "NTR" shall conform to the Supplemental Requirements for Notch Toughness, Zone 2.
All diaphragms shall be installed as steel is erected and secured with erection pins and bolts except as otherwise noted. Individual diaphragms at supports may be temporarily disconnected to install bearing anchor rods.
Two hardened washers required for each set of oversized holes.



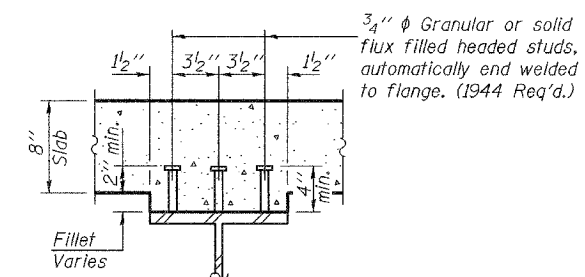
SECTION A-A



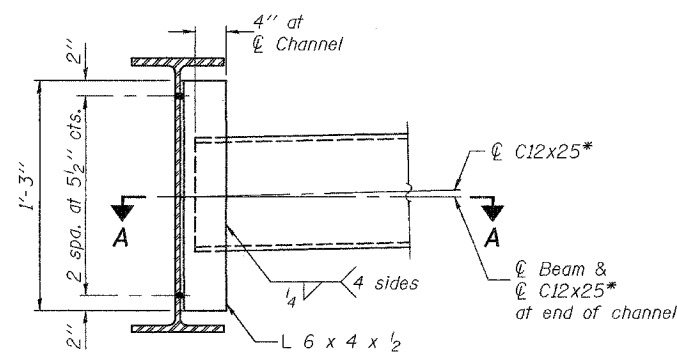
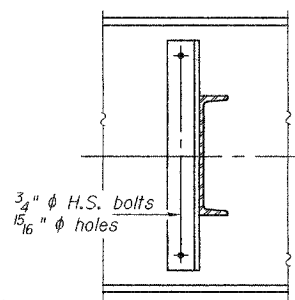
**ELEVATION
SPlice DETAIL**
(12 Required)



**TYP. END OF BEAM
ELEVATION**



SECTION A-A



DIAPHRAGM D
(45 Required)

* Alternate channel C12x30 is permitted to facilitate material acquisition. Calculated weight of structural steel is based on the lighter section.

DESIGNED	Dewey H. Coultas
CHECKED	Ray Ahanchi
DRAWN	h.t. duong
CHECKED	DHC/GRA

Nov. 30, 2007
EXAMINED *Thomas J. Donagabadi*
ENGINEER OF BRIDGE DESIGN
PASSED *Ralph E. Anderson*
ENGINEER OF BRIDGES AND STRUCTURES

STRUCTURAL STEEL
F.A.P. RTE. 869 - SEC. (101VB)B-1
FRANKLIN COUNTY
STATION 177+17.38
STRUCTURE NO. 028-0077