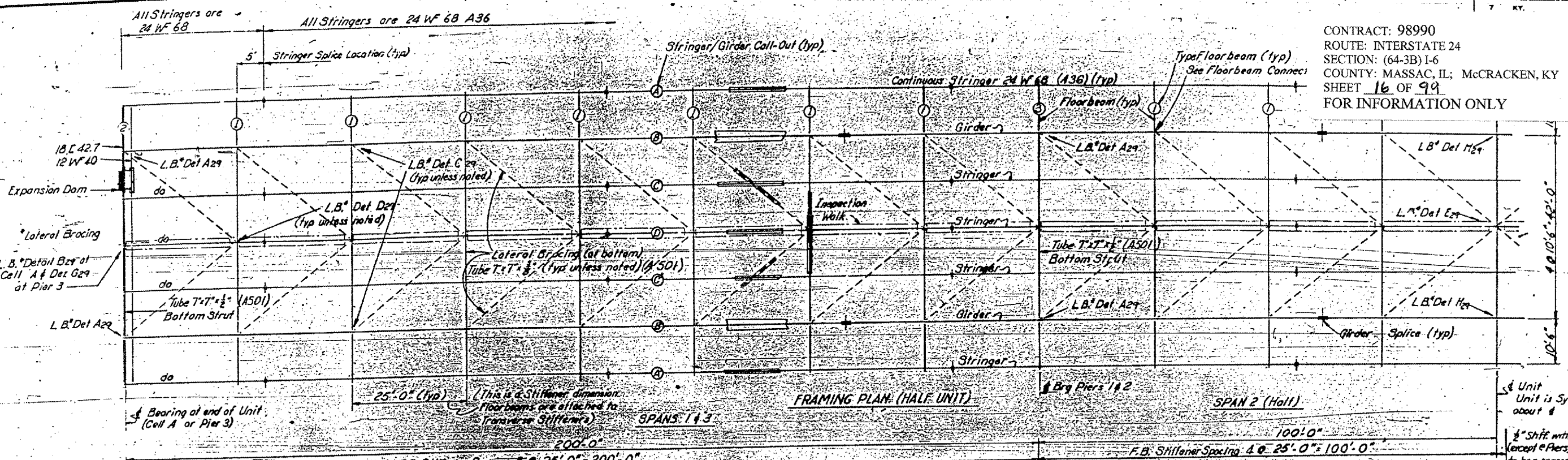
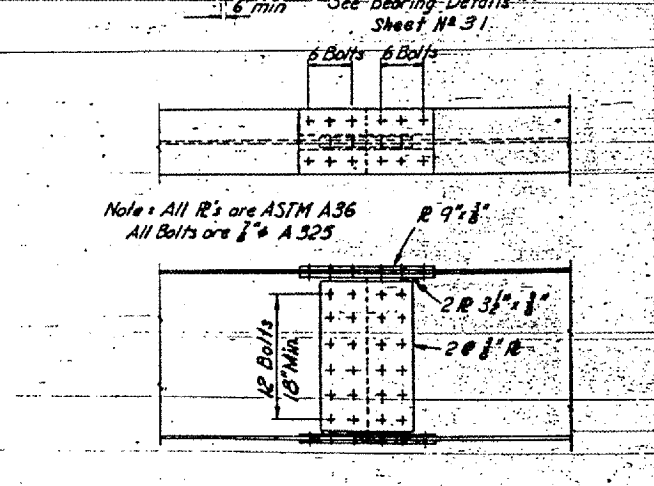
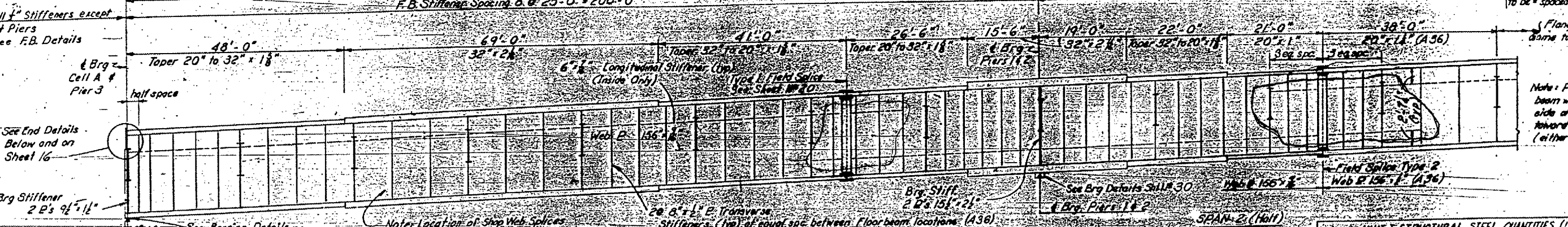


CONTRACT: 98990
 ROUTE: INTERSTATE 24
 SECTION: (64-3B) I-6
 COUNTY: MASSAC, IL; McCracken, KY
 SHEET 16 OF 99
 FOR INFORMATION ONLY

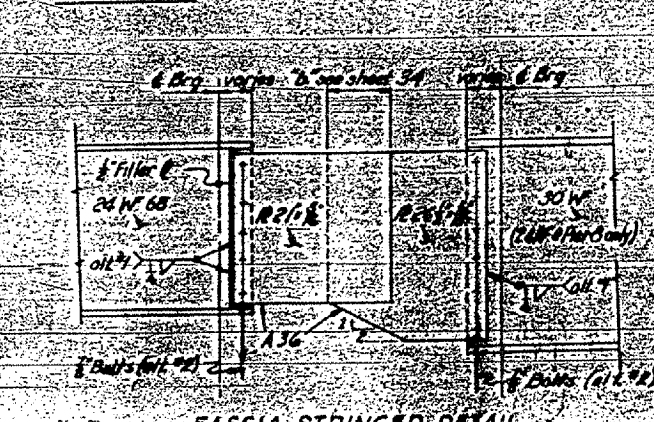


FRAMING PLAN (HALF UNIT)

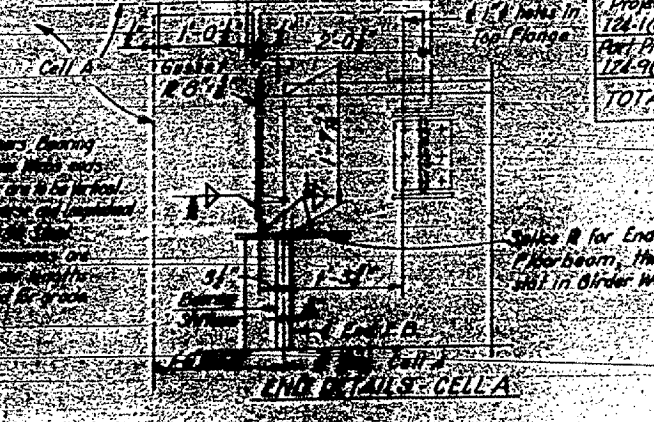
GIRDER ELEVATION



STRINGER SPLICE
USE IN UNITS I, II, III & IV



FASCIA STRINGER DETAIL
USE AT PIERS 3, 4, 6, 12 & 13
(Outside Only)



UNIT I FRAMING & PLATE GIRDER
STRUCTURAL STEEL

UNIT I STRUCTURAL STEEL QUANTITIES (LBS)				
Drains	A36	A441	Shoes	Exp. Dam
Project 124-1(6)35	200,064	178,589	13,322	34,758
Part Project 124-9(1)0	445,294	298,921	13,322	37,135
TOTAL	645,358	477,510	26,644	71,893

* Includes 690 Lbs. for Armored Edge in Cell A

KENTUCKY DEPARTMENT OF HIGHWAYS
 ILLINOIS DEPARTMENT OF PUBLIC WORKS
 AND BUILDINGS
 PROJECTS I 24-1(6)35, I 24-9(1)0, I 24-1(6)1
 BRIDGE OVER OHIO RIVER ON I24
 BETWEEN McCRACKEN COUNTY, KENTUCKY
 AND MASSAC COUNTY, ILLINOIS

MAZURE & BRIDAL
 Consulting Engineers
 P.O. Box 288

BRIDGE NUMBER

DRAWING NO. 17471

INDEX

PREPARED BY: CHH
 CHECKED BY: PAS
 DATE: 10-1-68
 SCALE: AS SHOWN
 SHEET: 16 OF 99