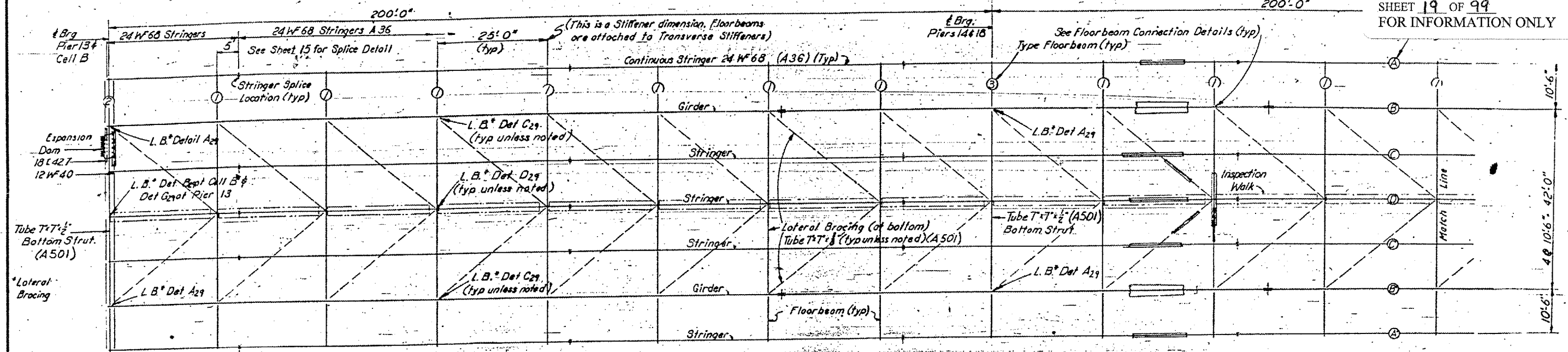
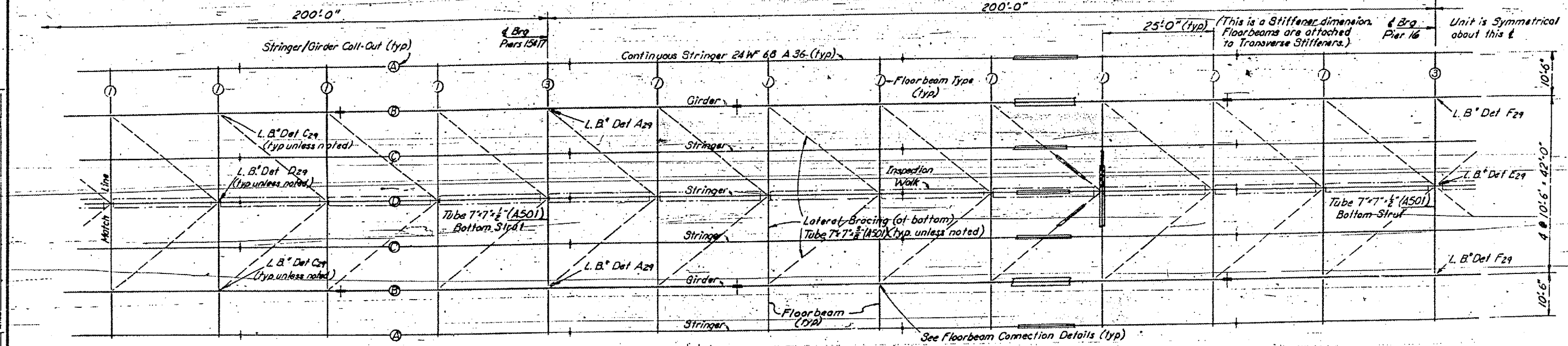


CONTRACT: 98990
 ROUTE: INTERSTATE 24
 SECTION: (64-3B) I-6
 COUNTY: MASSAC, IL; McCRACKEN, KY
 SHEET 19 OF 99
 FOR INFORMATION ONLY



TAIL SPAN SPANS 14 & 19 FRAMING PLAN FIRST INTERIOR SPANS (HALF) SPANS 15 & 18



FIRST INTERIOR SPANS (HALF) SPANS 15 & 18 FRAMING PLAN INTERIOR (CENTER) SPANS SPANS 16 & 17

Part Project	UNIT VI STRUCTURAL STEEL QUANTITIES (LBS)				
	Drains	A36	A441 Mod	Shoes	Exp Dam
124-9(1)0	1069	174,442	178,654	6,508	30,297
124-1(6)1	5665	*949,945	863,641	57,270	41,676
TOTAL	6,734	1,124,387	1,042,295	63,778	719,73

* Includes 690 lbs for Armored Edge in Cell B.

UNIT VI FRAMING PLAN
 STRUCTURAL STEEL

SHEET 18

KENTUCKY DEPARTMENT OF HIGHWAYS & ILLINOIS DEPARTMENT OF PUBLIC WORKS AND BUILDINGS

PROJECTS I 24-1(6)30, I 24-9(1)0, I 24-1(6)1
 BRIDGE OVER OHIO RIVER ON I 24
 BETWEEN McCRACKEN COUNTY, KENTUCKY AND MASSAC COUNTY, ILLINOIS

HAZLET & BIRDA Consulting Engineers P.O. No. 200	BRIDGE NUMBER	DRAWING NO. 17471
--	---------------	----------------------