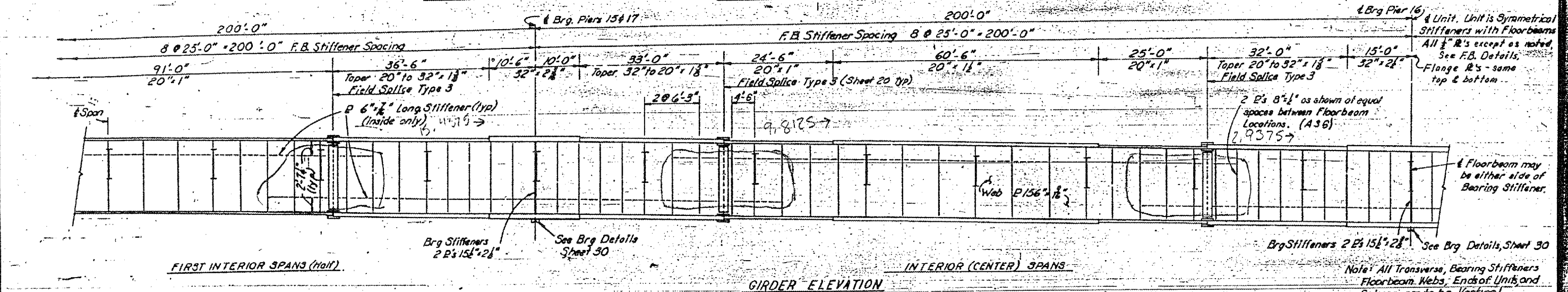
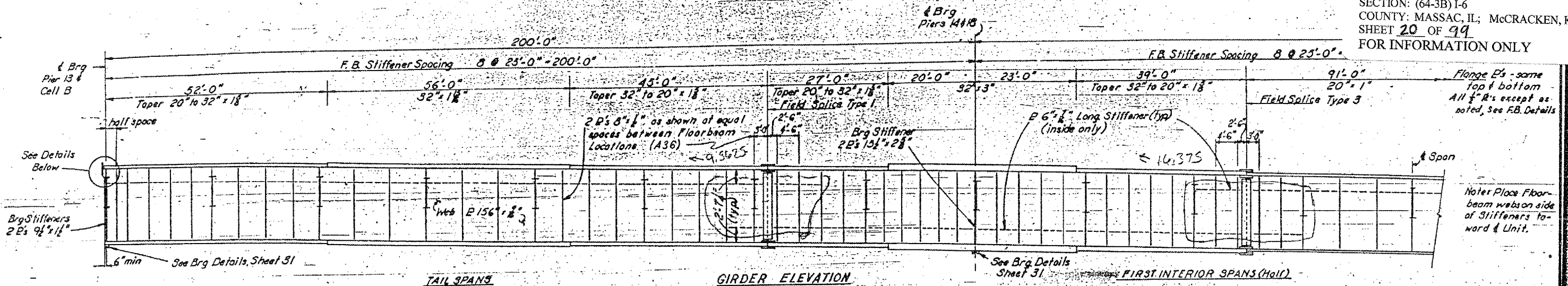
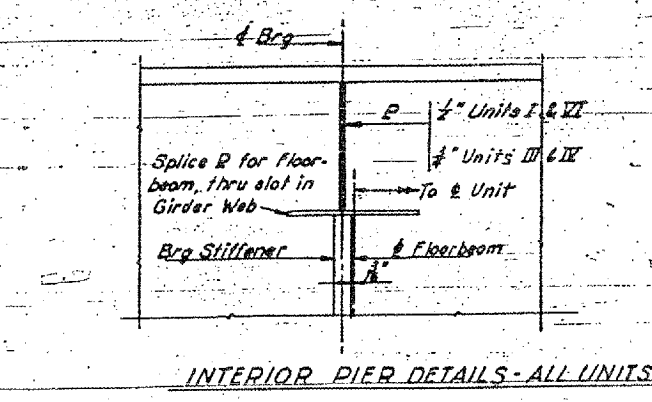
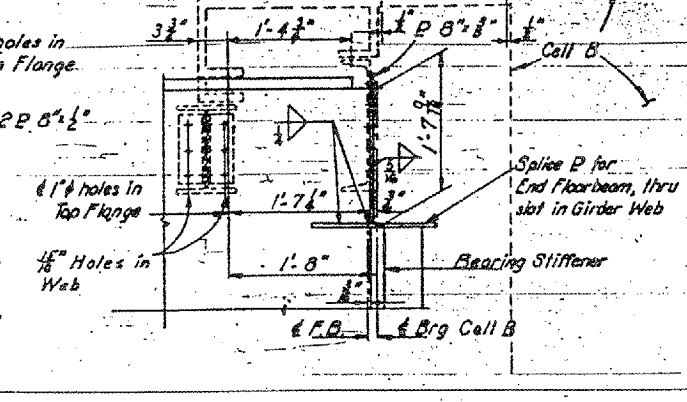
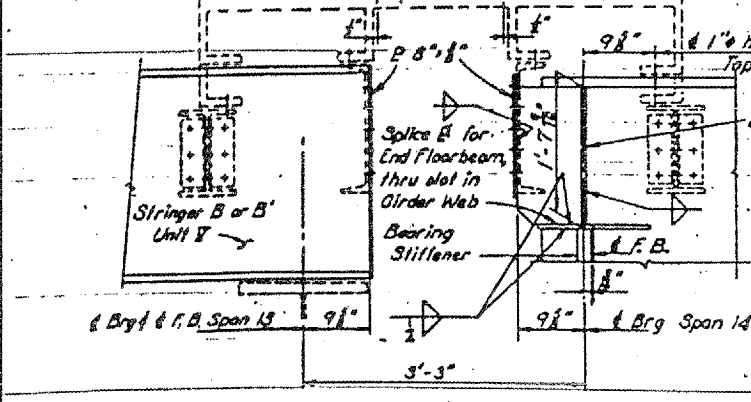


CONTRACT: 98990
 ROUTE: INTERSTATE 24
 SECTION: (64-3B) I-6
 COUNTY: MASSAC, IL; McCRACKEN, KY
 SHEET 20 OF 99
 FOR INFORMATION ONLY



Note: All Transverse, Bearing Stiffeners, Floorbeam Webs, Ends of Units, and Splices are to be Vertical. Intermediate Transverse and Longitudinal Stiffeners may be A36 Steel. All longitudinal dimensions are Horizontal, and girder lengths should be adjusted for grade.



END DETAILS - PIER 13

END DETAILS - CELL B

INTERIOR PIER DETAILS - ALL UNITS

UNIT VI PLATE GIRDERS
 STRUCTURAL STEEL

KENTUCKY DEPARTMENT OF HIGHWAYS
 ILLINOIS DEPARTMENT OF PUBLIC WORKS
 AND BUILDINGS

PROJECTS I 24-1(6)38, I 24-9(1)10, I 24-1(6)11
 BRIDGE OVER OHIO RIVER ON I-24
 BETWEEN McCRACKEN COUNTY, KENTUCKY
 AND MASSAC COUNTY, ILLINOIS

HAZLET & BRIDAL
 Consulting Engineers
 No. 208

BRIDGE NUMBER
 17471

DRAWING NO.
 17471

DATE