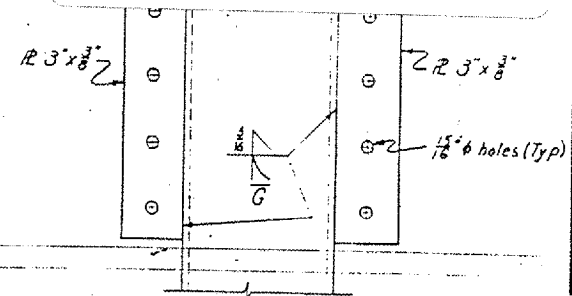
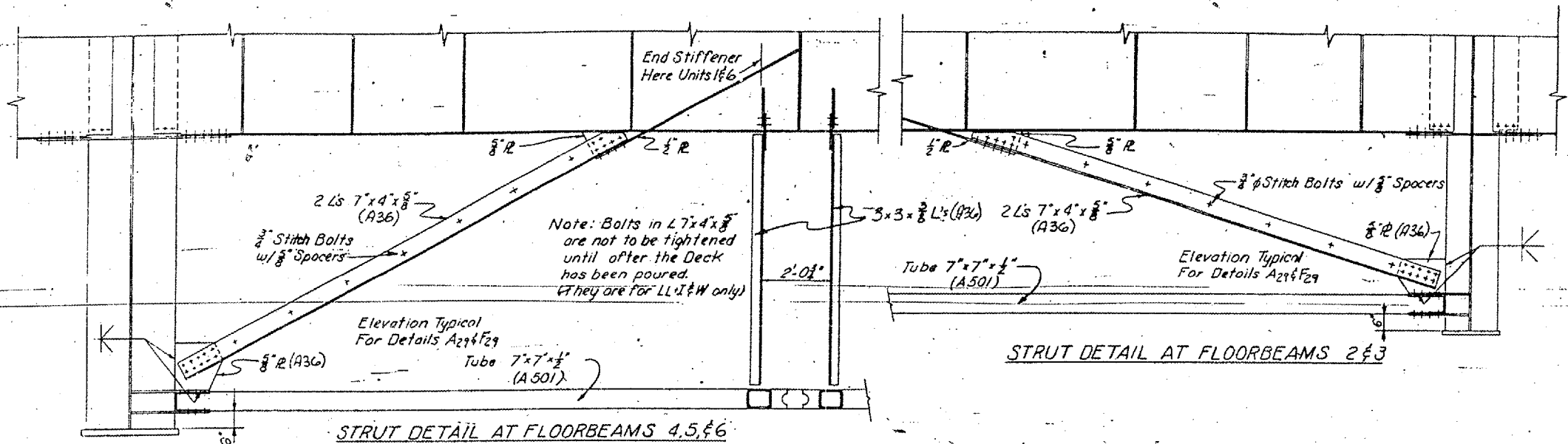


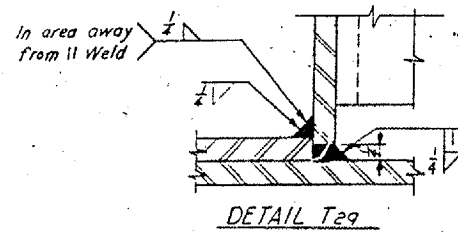
CONTRACT: 98990
 ROUTE: INTERSTATE 24
 SECTION: (64-3B) I-6
 COUNTY: MASSAC, IL; McCracken, KY
 SHEET 24 OF 99
 FOR INFORMATION ONLY



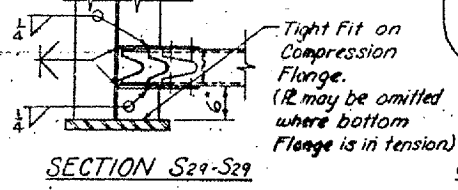
END OF SECTION
 DETAIL L29
 (Use of Details A29 & F29)

TABLE S

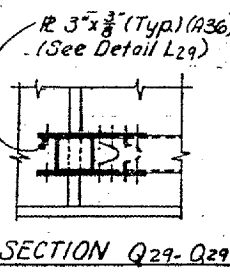
Unit	Piec.	Dist.
I	3	2'-0"
III	4	2'-0"
III & IV	8	1'-3"
IV	12	2'-0"
VI	13	2'-0"



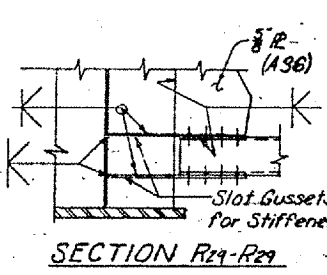
DETAIL T29



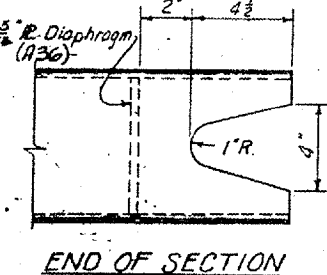
SECTION S29-S29



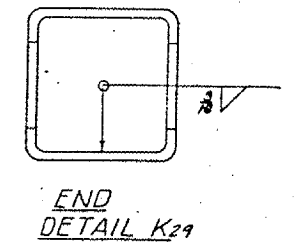
SECTION Q29-Q29



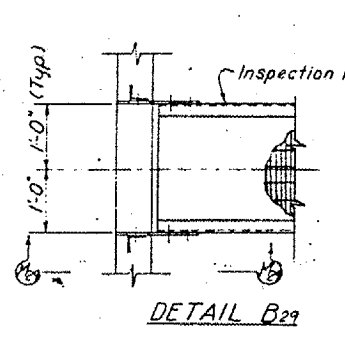
SECTION R29-R29



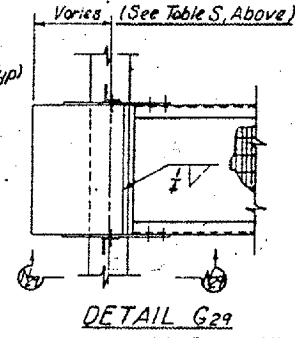
END OF SECTION
 DETAIL K29



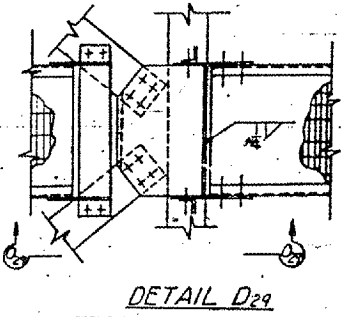
END
 DETAIL K29



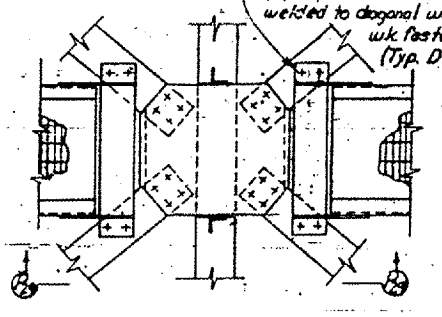
DETAIL B29



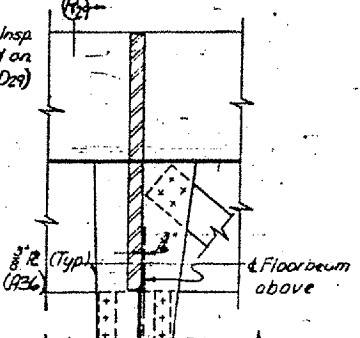
DETAIL G29



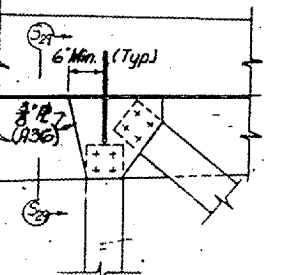
DETAIL D29



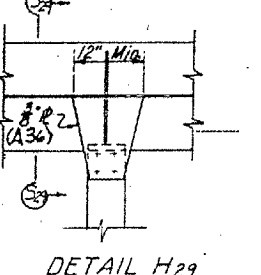
DETAIL E29



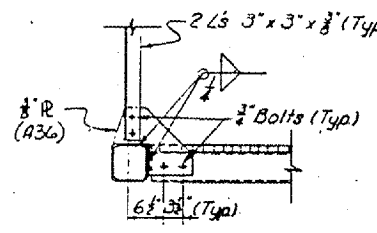
DETAIL A29



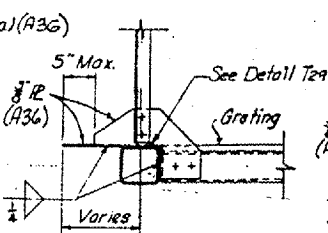
DETAIL C29



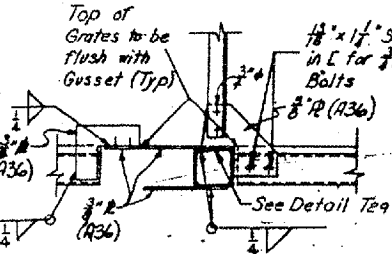
DETAIL H29



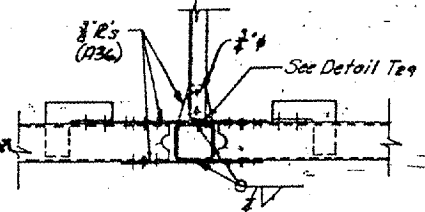
SECTION M29-M29



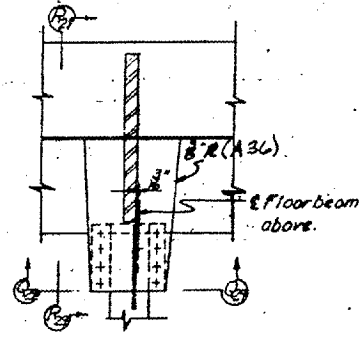
SECTION N29-N29



SECTION O29-O29
 (Diag. Brace Removed)



SECTION P29-P29



DETAIL F29

LATERAL BRACING
 STRUCTURAL STEEL

KENTUCKY DEPARTMENT OF HIGHWAYS
 ILLINOIS DEPARTMENT OF PUBLIC WORKS
 AND BUILDINGS
 PROJECTS 124-1(6)138, 124-9(1)10, 124-1(6)11
 BRIDGE OVER OHIO RIVER ON I24
 BETWEEN McCracken COUNTY, KENTUCKY
 AND MASSAC COUNTY, ILLINOIS

HAZLET & ERDAL
 Consulting Engineers
 P.E. No. 288

BRIDGE
 NUMBER

DRAWING NO.
 17471

INDEX

DRAWN BY: J.A.S./M.L. CHECKED BY: C.H.M. DATE: 4-68
 REVISION: 1. DATE: 4-68
 SHEET 29 OF 121

