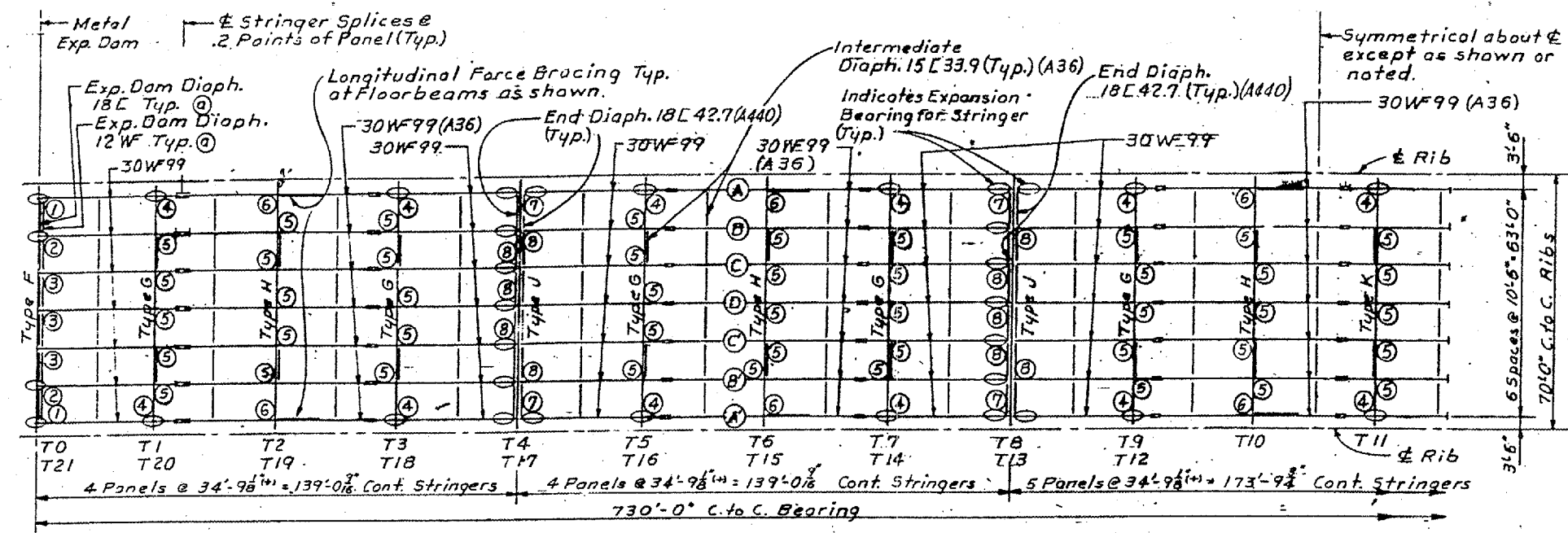
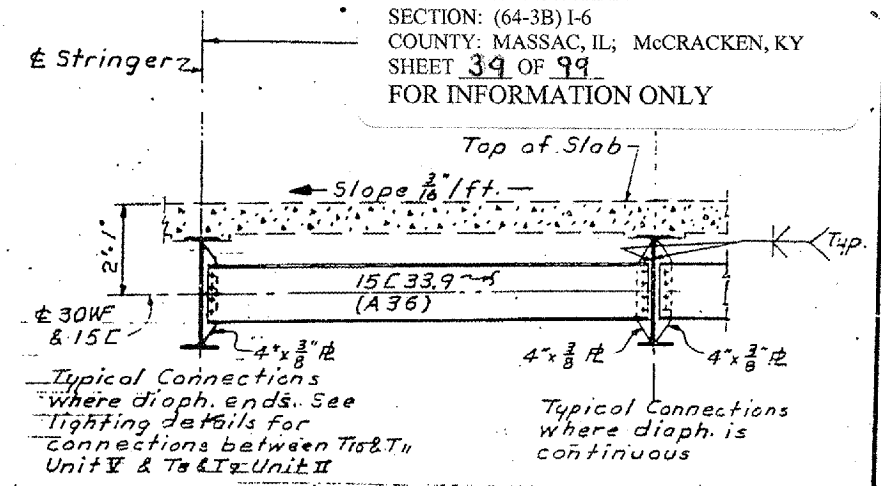


CONTRACT: 98990
 ROUTE: INTERSTATE 24
 SECTION: (64-3B) I-6
 COUNTY: MASSAC, IL; McCracken, KY
 SHEET 39 OF 99
 FOR INFORMATION ONLY

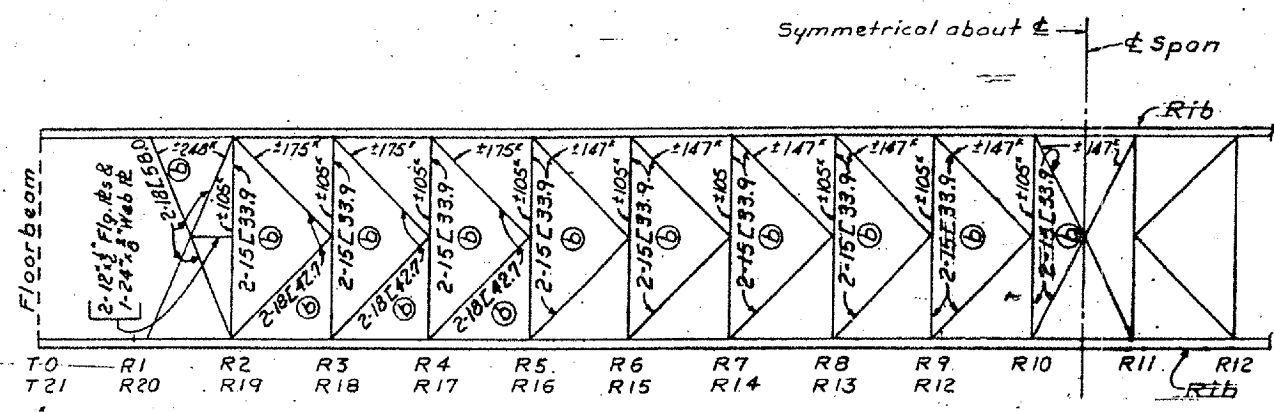


FLOOR SYSTEM FRAMING PLAN

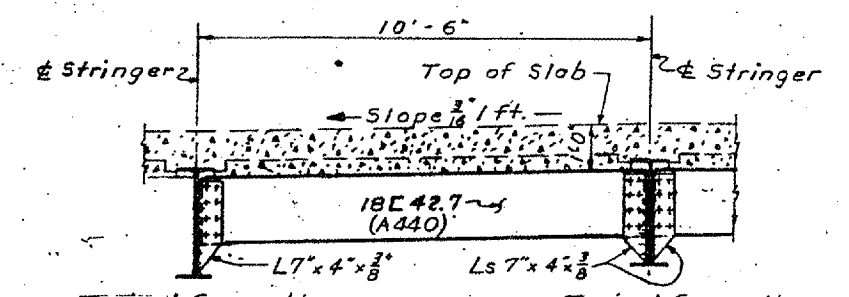
① Indicates Type of Bearings (See Sheet 32)



INTERMEDIATE DIAPHRAGM DETAILS

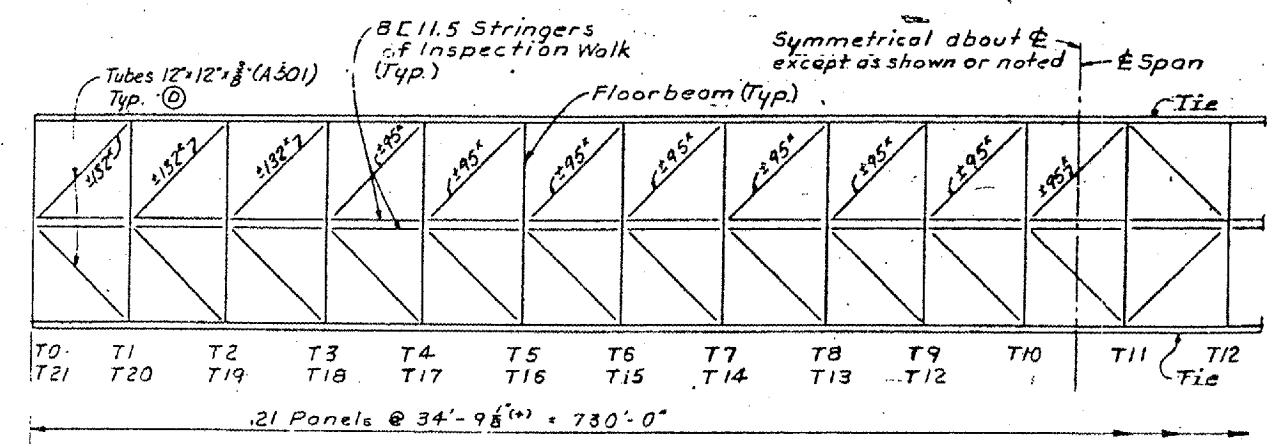


PLAN OF TOP LATERAL BRACING



END DIAPHRAGM DETAILS

- NOTE:
- ① See Expansion Dam Detail Sheet for Details.
 - ② See Sheet 46 for details of Stiffeners and Web Plates.
 - ③ All bracing shall be A36 Steel and shall be detailed to the deformed length of the Tie or Rib.
 - ④ Camber Tubes $\frac{1}{16}$ " up For Longitudinal Force Bracing and Stringer Field Splice see Sheet 41.



PLAN OF BOTTOM LATERAL BRACING

UNIT V STRUCTURAL STEEL QUANTITIES (LBS)								
Part of Project	Drains	Cable Strand	A36	A440	A441	A514	Shoes	Exp. Dam
124.9(10)	20,951	139,072	1,729,990	21,500	1,013,893	583,318	77,922	70,327

FRAMING PLAN FOR UNIT V STRUCTURAL STEEL

KENTUCKY DEPARTMENT OF HIGHWAYS
 ILLINOIS DEPARTMENT OF PUBLIC WORKS AND BUILDINGS
 PROJECTS 124-11675B, 124-9(1)X, 124-116
 BRIDGE OVER OHIO RIVER ON I24
 BETWEEN MACCRACKEN COUNTY, KENTUCKY
 AND MASSAC COUNTY, ILLINOIS

HAZLET & BIRNALL
 Consulting Engineers
 P.O. Box 108

BRIDGE NUMBER

DRAWING NO. 1747

PREPARED BY: MDC, 7/57, CHECKED BY: CHH, DATE: 5-66, SCALE: AS SHOWN, SHEET NO. 39 OF 99, SHEET 56 OF 121