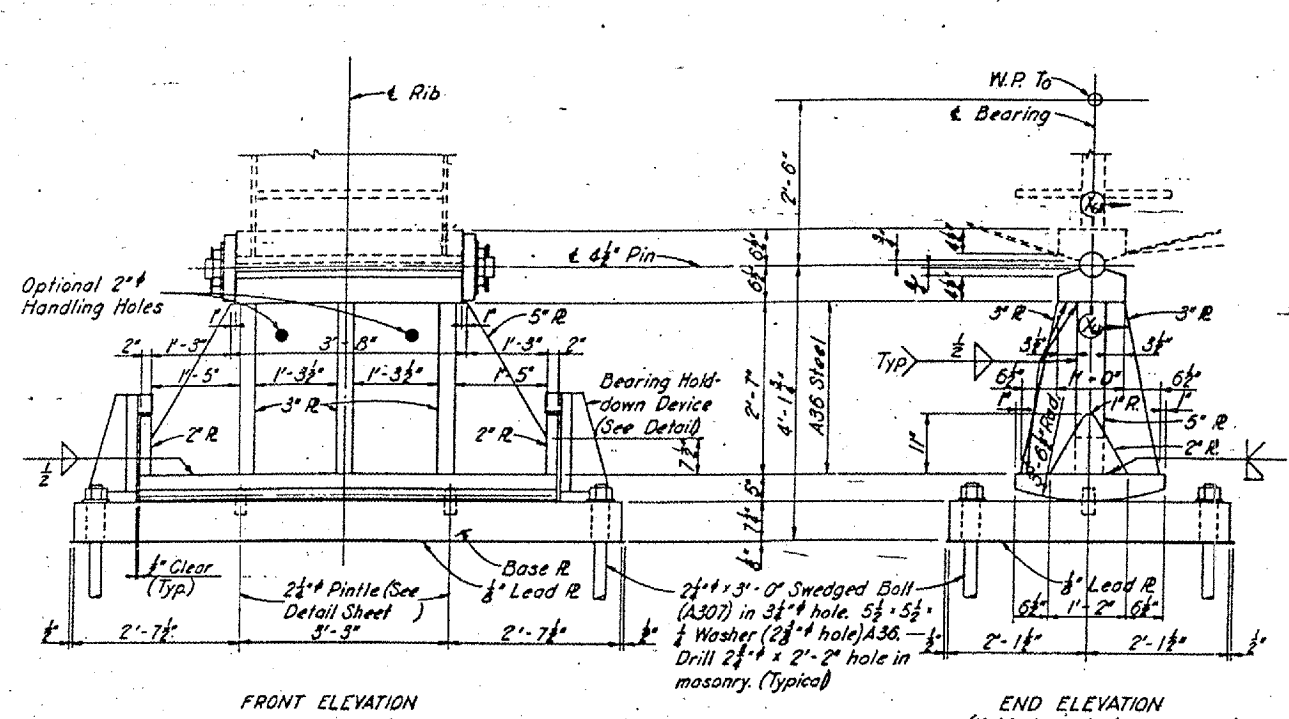
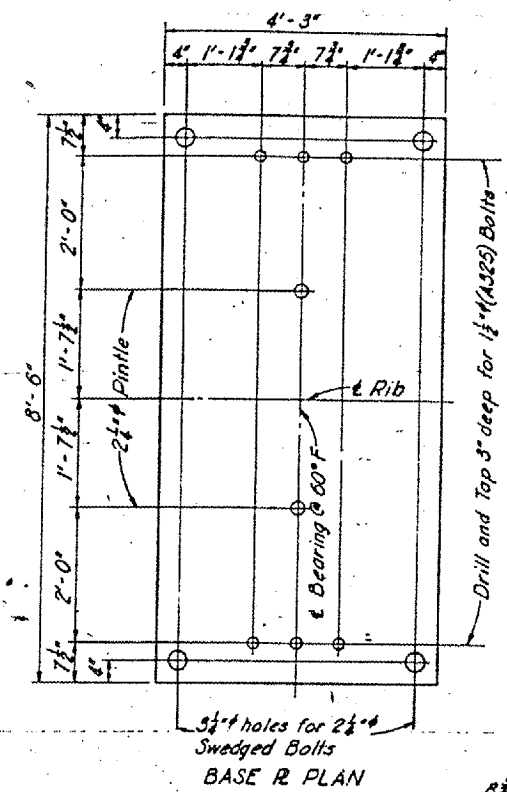


CONTRACT: 98990
 ROUTE: INTERSTATE 24
 SECTION: (64-3B)1-6
 COUNTY: MASSAC, IL; McCRACKEN, KY
 SHEET 42 OF 99
 FOR INFORMATION ONLY

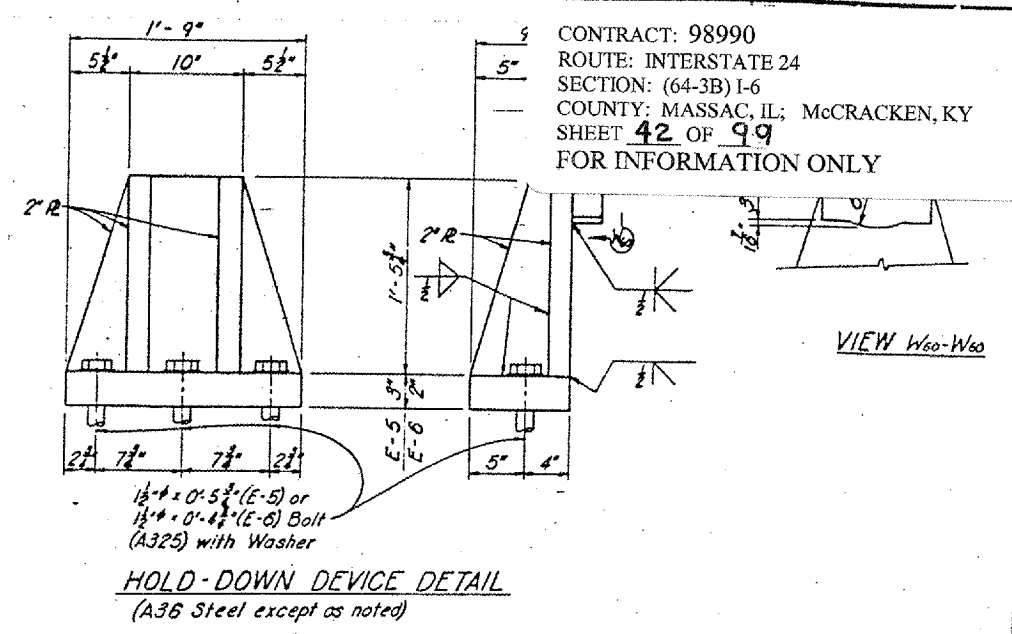


FRONT ELEVATION

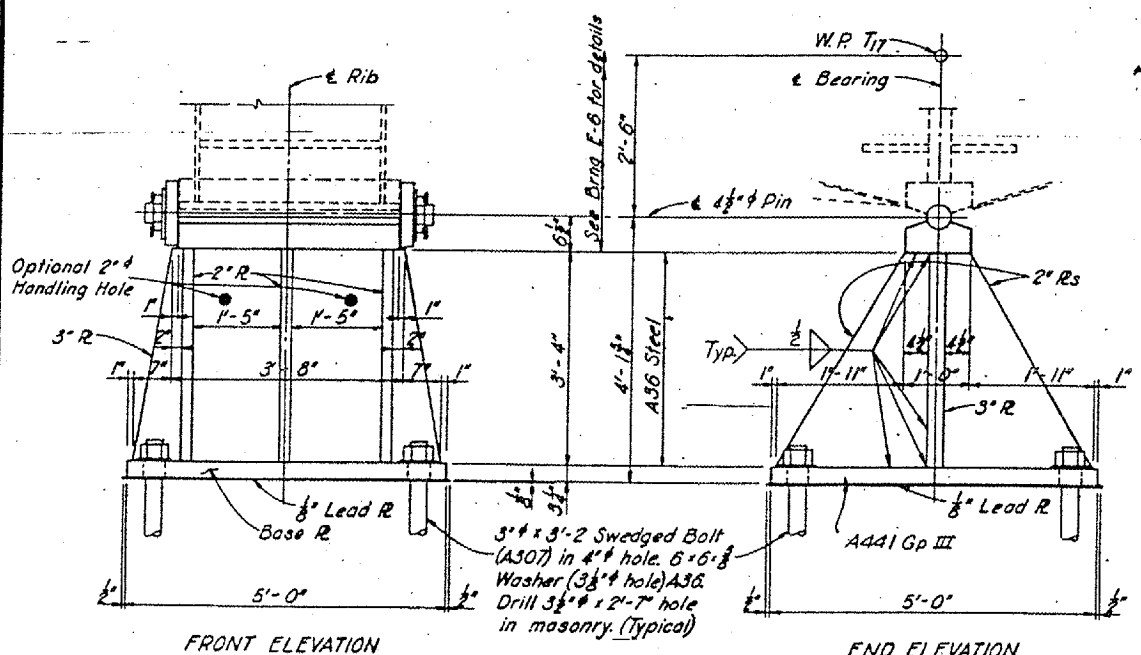
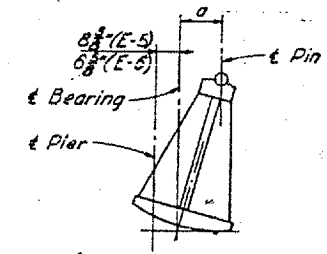
END ELEVATION
 (Hold-down devices removed)
BEARING TYPE E-6
 Use at Pier 3 - 2 Req'd



BASE R PLAN

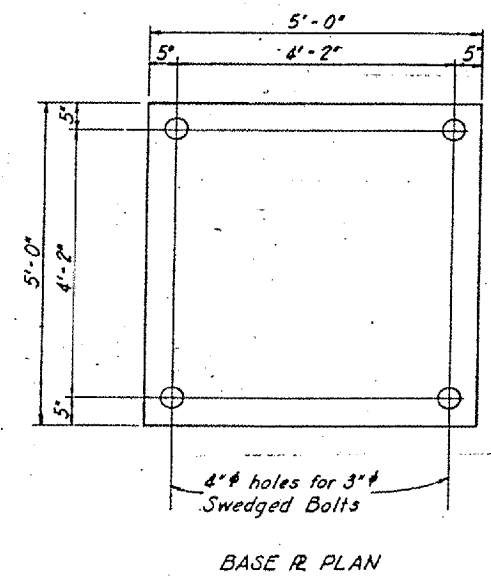


HOLD-DOWN DEVICE DETAIL
 (A36 Steel except as noted)



FRONT ELEVATION

END ELEVATION
BEARING TYPE F-4
 Use at Pier 4 - 2 Req'd



BASE R PLAN

| Temperature | a | |
|---------------|---------|---------|
| | E-5 | E-6 |
| -20 | -4 3/8" | -3 1/8" |
| 0 | -3 3/8" | -2 1/8" |
| 20 | -2 1/8" | -1 1/8" |
| 40 | -1 1/8" | -1" |
| 60 | - | - |
| 80 | 1 1/8" | 1" |
| 100 | 2 1/8" | 1 1/8" |
| 120 | 3 1/8" | 2 1/8" |
| FWS Expansion | 1 1/8" | 1 1/8" |

Shoes shall be vertical at 60°F after all dead load (including Future Wearing Surface) has been applied.
 For Surface Finishes see sheet 31 for Expansion Bearing and sheet 30 for Fixed Bearing.
 See sheet 30 for White Lead & Tallow, Welding, Anchor Bolts and Setting Masonry Plates Notes.

| Bearing | E-5 | F-3 | E-6 | F-4 |
|----------|------------|------------|------------|-----------|
| DL | 3044 k | 3044 k | 2492 k | 2492 k |
| L.L. | 455 k | 455 k | 401 k | 401 k |
| Impact | 27 k | 27 k | 27 k | 27 k |
| Total | 3526 k | 3528 k | 2920 k | 2920 k |
| Max.Ecc. | 6.31 in | - | 5.06 in | - |
| Weight | 26,295 lbs | 12,666 lbs | 20,139 lbs | 9,518 lbs |

BEARING DETAILS
 UNIT II
 STRUCTURAL STEEL

SHEET 60 OF 92

KENTUCKY DEPARTMENT OF HIGHWAYS
ILLINOIS DEPARTMENT OF PUBLIC WORKS
AND BUILDINGS

PROJECTS 124-11(6)358, 124-9(1)10, 124-K(6)11
 BRIDGE OVER OHIO RIVER ON 124
 BETWEEN McCRACKEN COUNTY, KENTUCKY
 AND MASSAC COUNTY, ILLINOIS

| | | |
|---|------------------|-------------------------------|
| HAZLET & BRAD Consulting Engineers P.O. No. 288 | BRIDGE NUMBER | DRAWING NO. INDEX 1747/ |
|---|------------------|-------------------------------|

DRAWN BY: CHH
 CHECKED BY: ELD
 DATE: 5-68
 PROJECT: 124-11(6)358
 SHEET: 42 OF 99