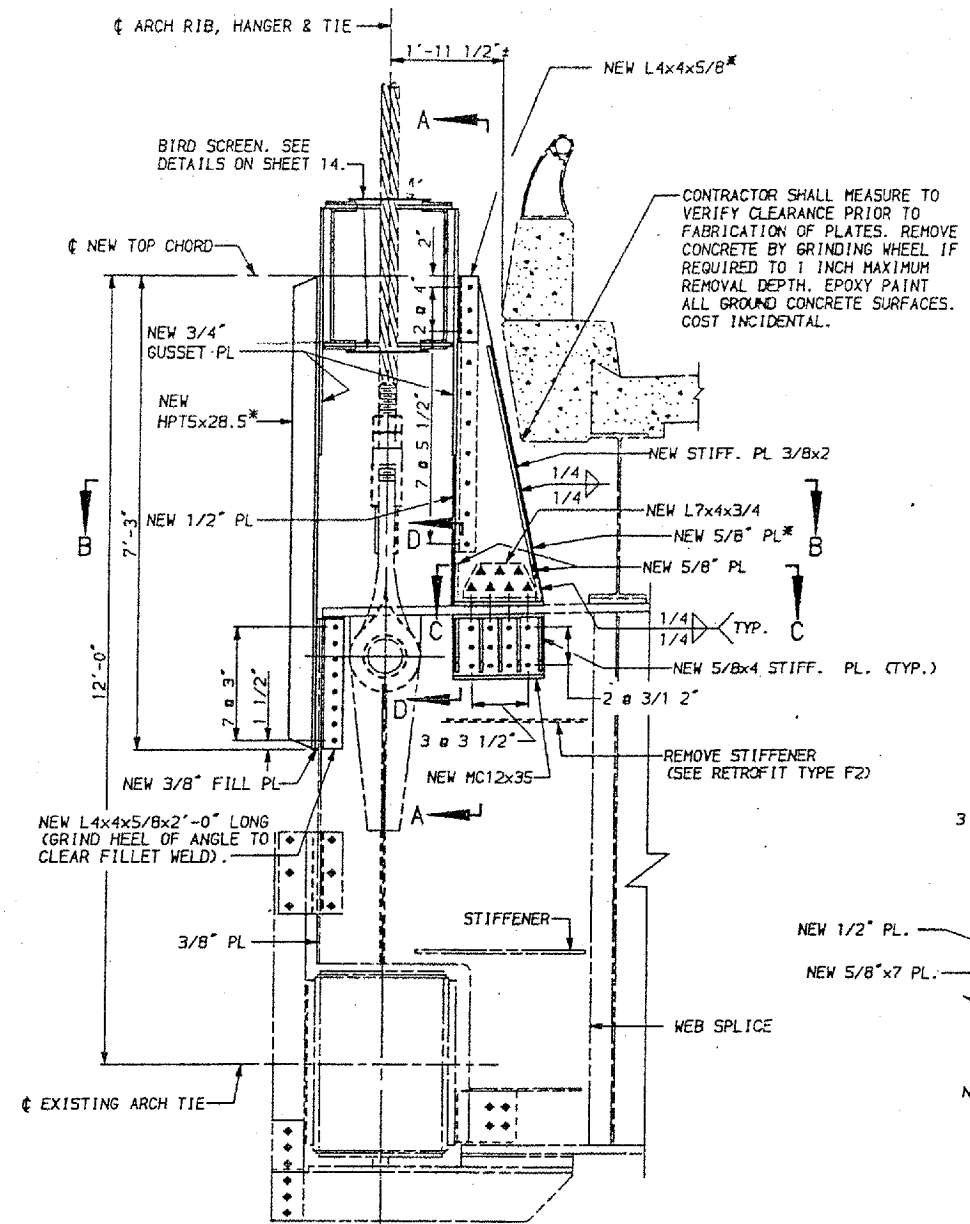


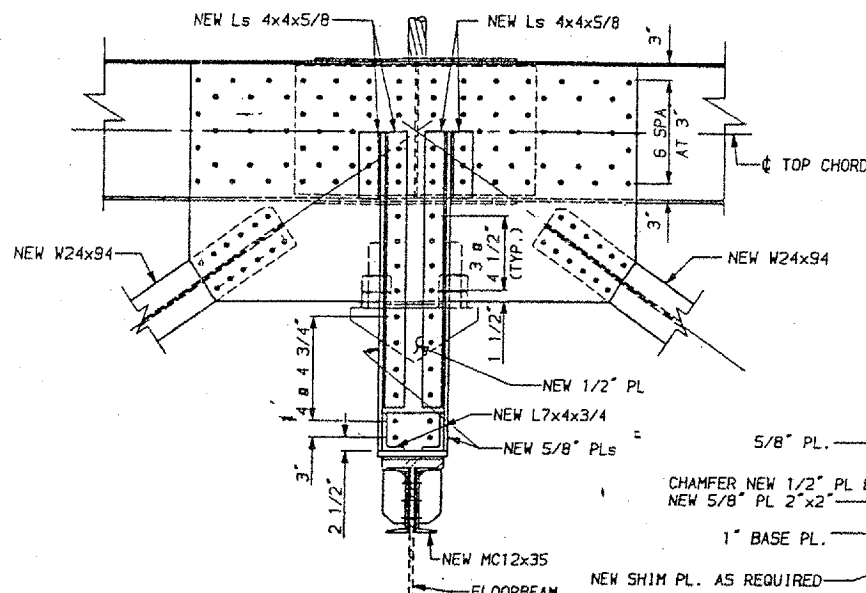
24	64-3B-1-3	32	12
ILLINOIS PROJECT			
MASSAC, IL. & McCRACKEN, KY.			

NOTE: FOR BOLT SPACING NOT SHOWN, SEE TYPICAL DETAIL SHEET 11.

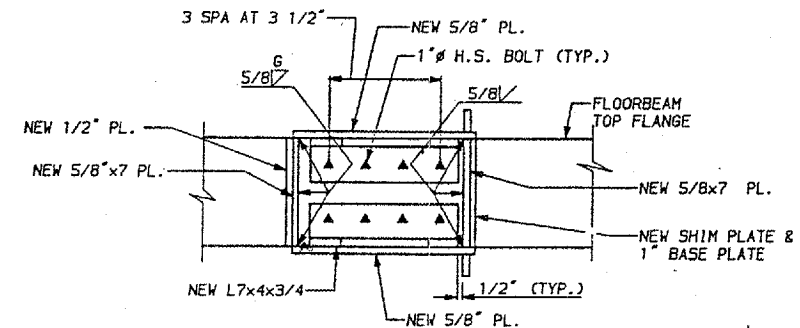


△ TYPICAL SECTION AT FLOORBEAM (T9 SHOWN)

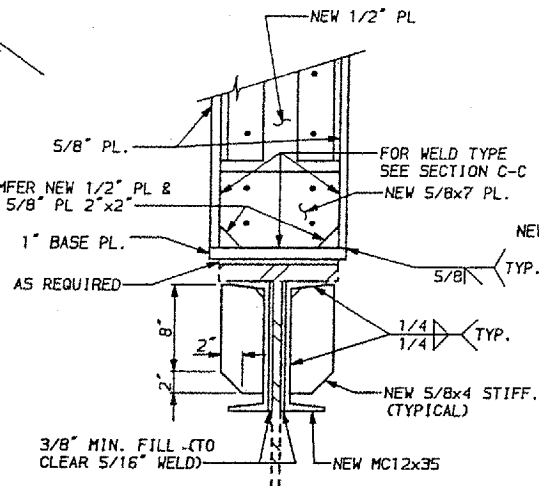
♦ DENOTES EXISTING 7/8" H.S. BOLT IN EXISTING HOLE.



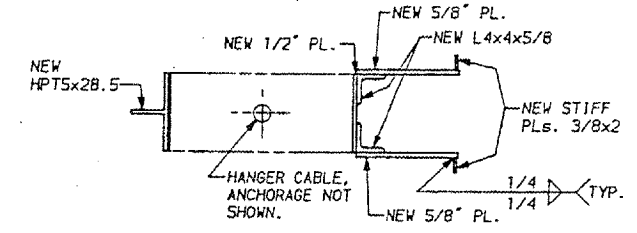
△ SECTION A-A



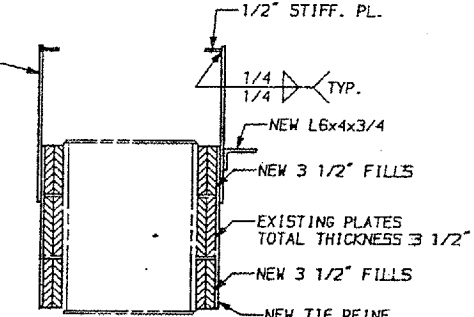
△ SECTION C-C



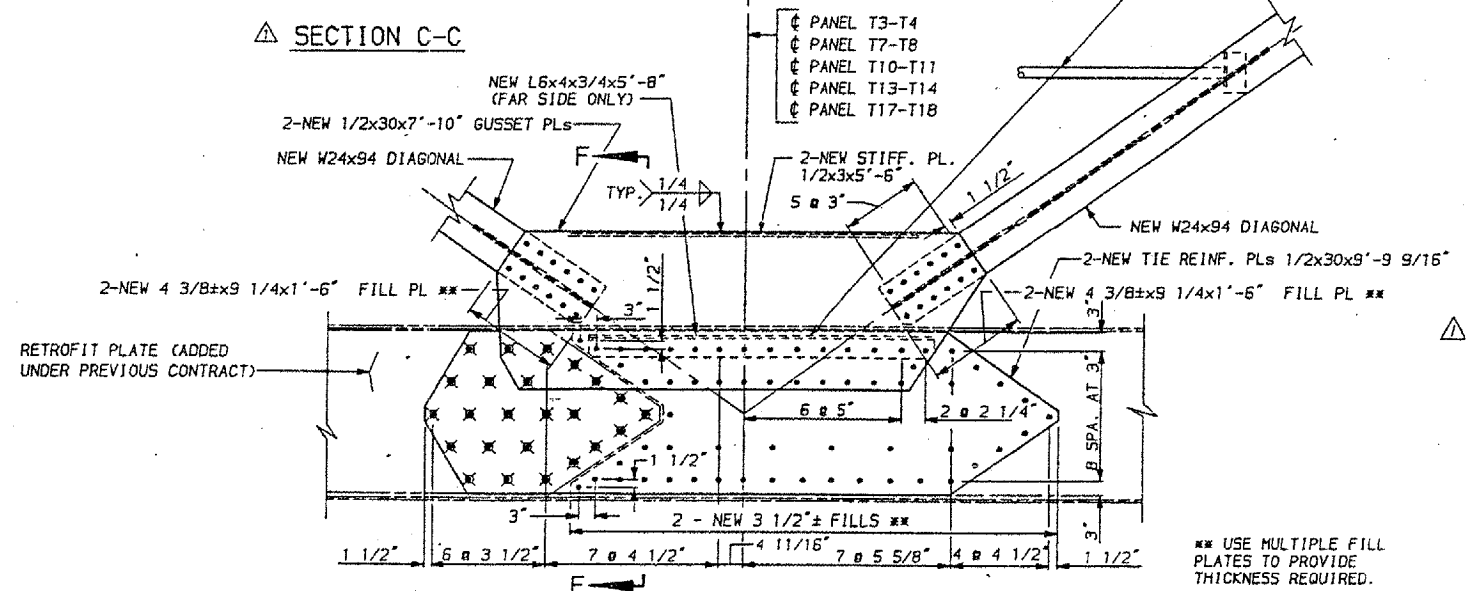
△ SECTION D-D



SECTION B-B



△ SECTION F-F



△ DETAIL AT DIAGONAL/TIE CONNECTION

PANEL T10-T11 (WEST ARCH SHOWN) FOR TYPICAL DETAILS SEE SHEETS 11 & 14

*** USE MULTIPLE FILL PLATES TO PROVIDE THICKNESS REQUIRED.

- NOTES:
- FOR GENERAL NOTES, SEE SHEET 3.
 - ♦ DENOTES NEW 1 1/4" H.S. BOLT (AASHTO M 253) IN EXISTING HOLE.
 - DENOTES NEW 7/8" H.S. BOLT IN NEW HOLE.
 - * VERTICAL MEMBERS SHALL BE FULLY VERTICAL.
 - FOR RETROFIT TYPE F2, SEE SHEET 19.
 - ▲ DENOTES NEW 1" H.S. BOLT (AASHTO M 154) IN NEW HOLE.
 - ALL NEW STRUCTURAL STEEL SHOWN SHALL MEET NOTCH TOUGHNESS REQUIREMENTS (N.T.R.) EXCEPT RAIL, STIFFENERS AND ANGLE SHOWN ON DETAIL AT DIAGONAL/TIE CONNECTION.

SLH	REM	JEP	MISCELLANEOUS	10/28/88
REV. NO.	DRAWN	CHKD.	APPD.	DATE

F A I ROUTE 24 (INTERSTATE 24)
 OVER OHIO RIVER
 MASSAC COUNTY ILLINOIS

UNIT V
 TRUSS DETAILS - 2

PREPARED BY
MODJESKI AND MASTERS
 CONSULTING ENGINEERS

DATE: 10/11/88