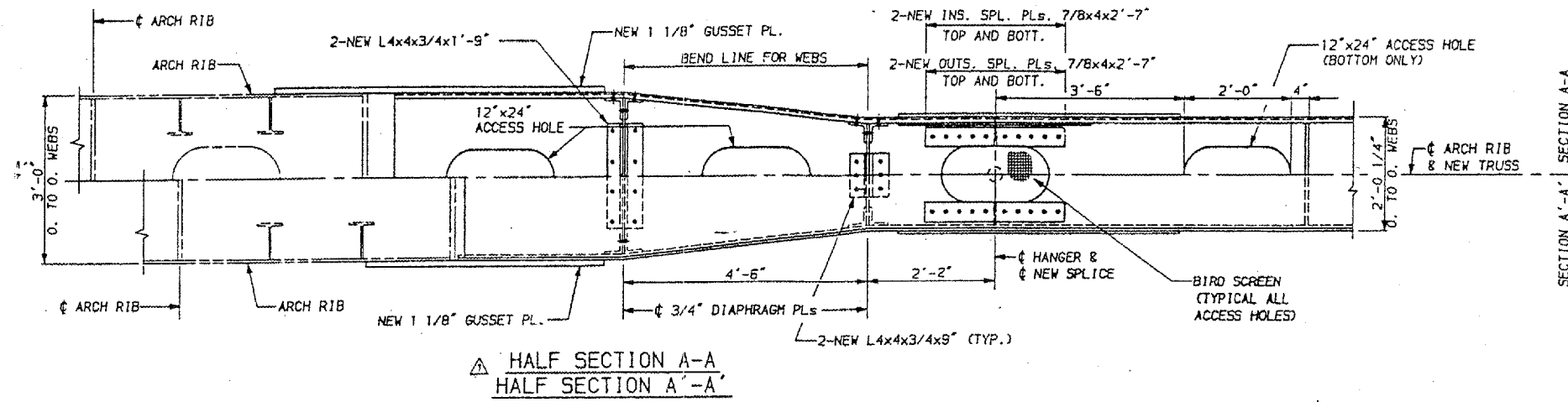
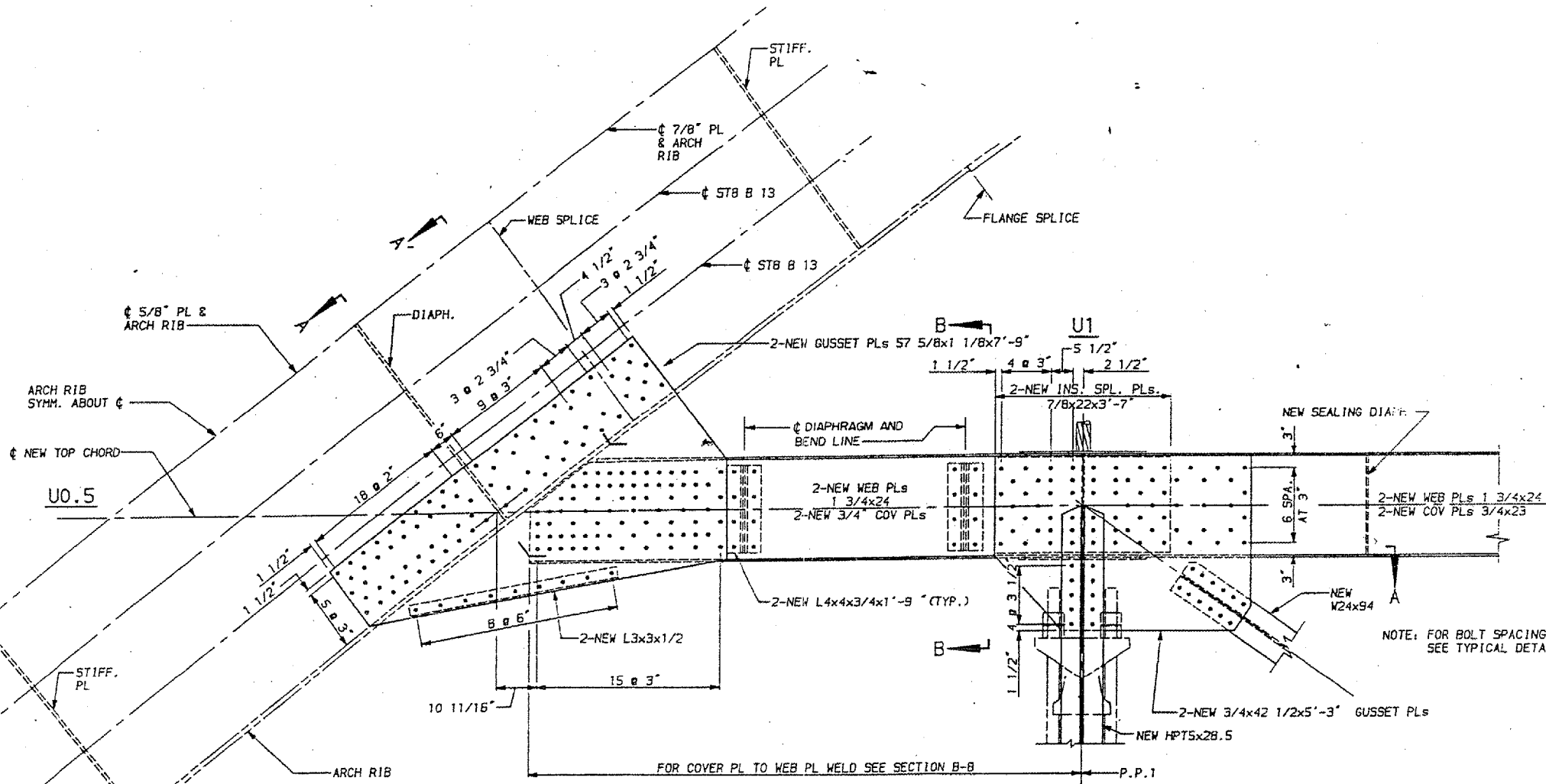


CONTRACT: 98990
 ROUTE: INTERSTATE 24
 SECTION: (64-3B) I-6
 COUNTY: MASSAC, IL; McCRACKEN, KY
 SHEET 62 OF 99
 FOR INFORMATION ONLY

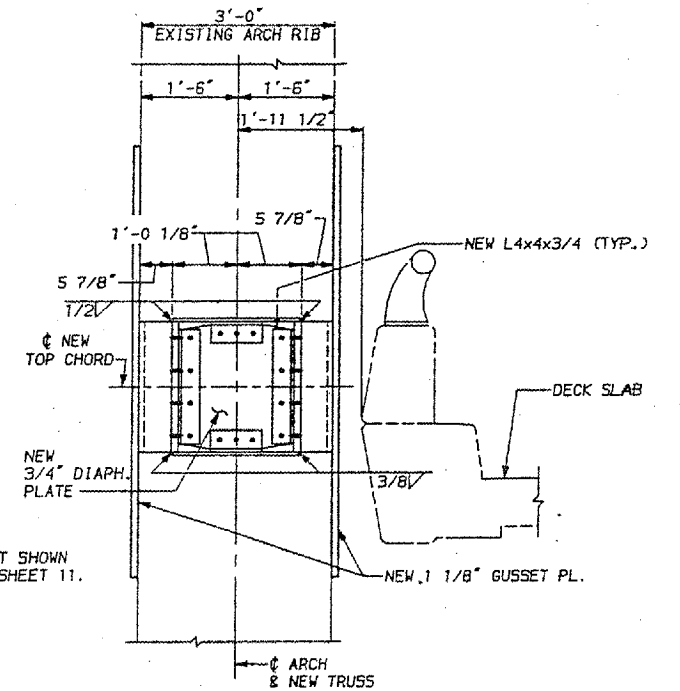
24	64-3B-1-3	32	13
REV.	ILLUSTR.	PROJECT	
MASSAC, IL. & McCRACKEN, KY.			



△ HALF SECTION A-A
 HALF SECTION A'-A'



△ END PANEL ELEVATION - U0.5 TO U1



△ SECTION B-B

- NOTES:
- FOR GENERAL NOTES, SEE SHEET 3.
 - INDICATES NEW 7/8" H.S. BOLT (M154) IN NEW HOLE.
 - FOR BIRD SCREEN DETAILS, SEE SHEET 14.
 - ALL NEW STRUCTURAL STEEL SHALL MEET NOTCH TOUGHNESS REQUIREMENTS (N.T.R.) EXCEPT L4x4x3/4, L3x3x1/2 AND 3/4" DIAPHRAGM PLATE.

REV. NO.	SLH	REM	JEP	MISCELLANEOUS	DATE
					10/28/88
F A I ROUTE 24 (INTERSTATE 24) OVER OHIO RIVER MASSAC COUNTY ILLINOIS					
UNIT V TRUSS DETAILS - 3					

PREPARED BY
MODJESKI AND MASTERS
 CONSULTING ENGINEERS

DATE: 10/11/88