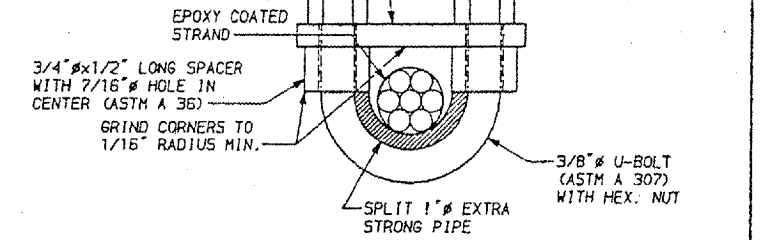


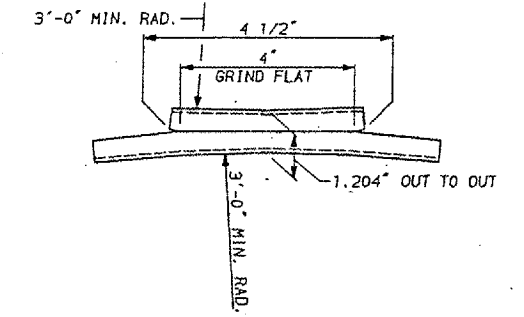
24	64-3B-1-3	32	16
----	-----------	----	----

ILLINOIS PROJECT
 MASSAC, IL. & McCracken, KY.

BAR 1/4x7/8x0'-2 5/8"
 EPOXY COATED
 (ASTM A 36)



SECTION U-U



DETAIL S

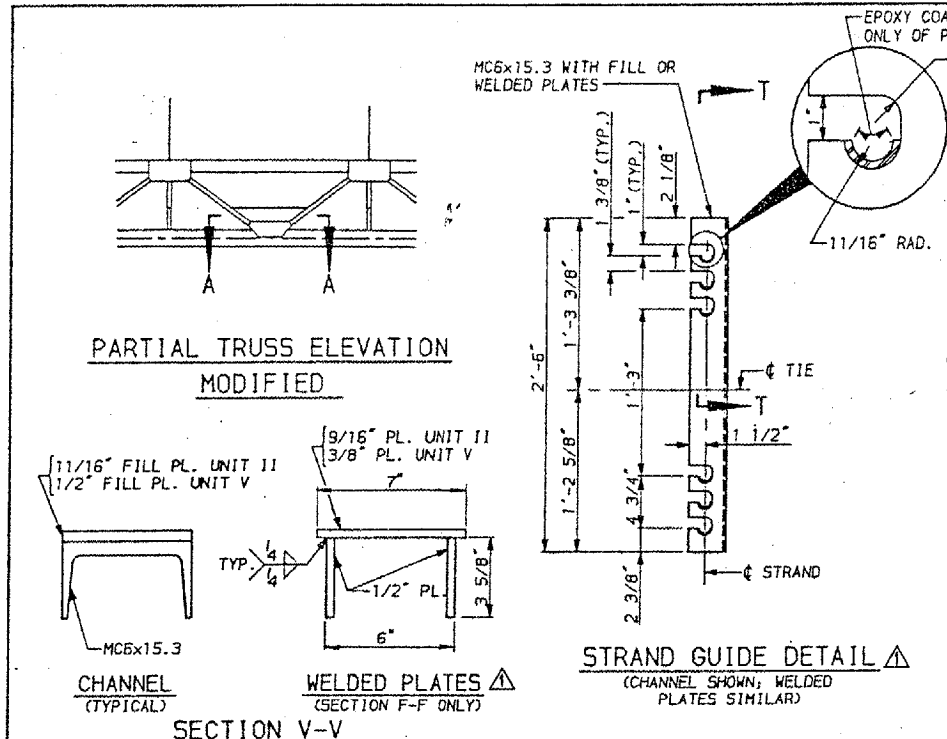
REMOVE EXISTING FULL DEPTH DIAPHRAGM CONSISTING OF PLATE AND ANGLES. REPLACE ALL FASTENERS IN KIND.

NOTES:
 FOR GENERAL NOTES, SEE SHEET 3.
 FOR ADDITIONAL DETAILS, SEE SHEETS 15 AND 17.
 FOR LOCATION OF SECTION F-F, SEE SHEET 15.

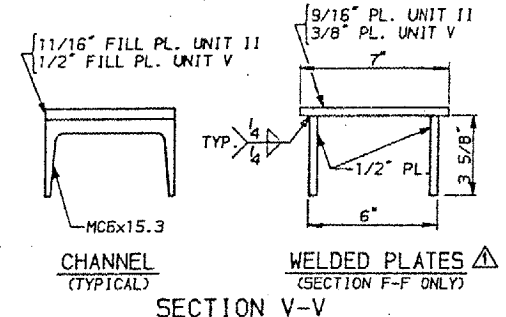
REV. NO.	DATE	DESCRIPTION	DATE
1	10/25/88	MISCELLANEOUS	

F A I ROUTE 24 (INTERSTATE 24)
 OVER OHIO RIVER
 MASSAC COUNTY ILLINOIS

POST-TENSIONING DETAILS 2

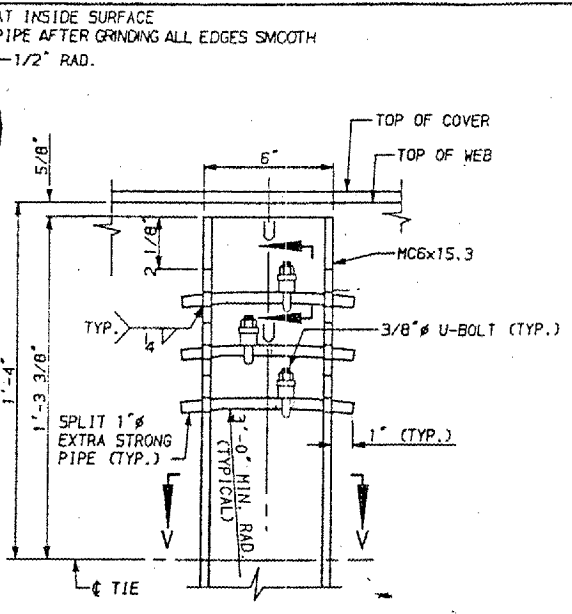


PARTIAL TRUSS ELEVATION
 MODIFIED



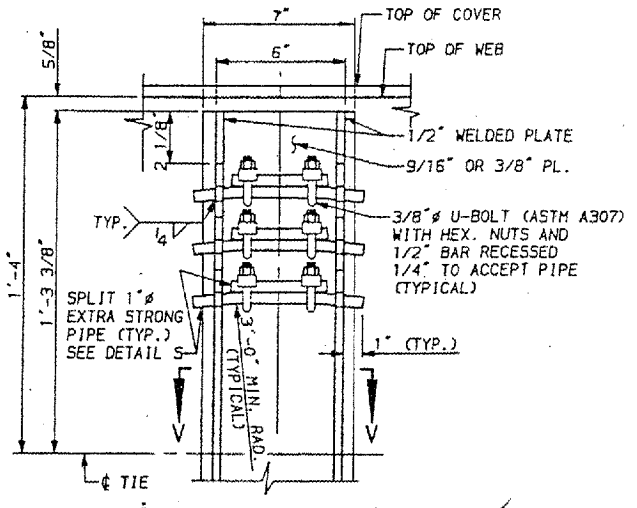
SECTION V-V

STRAND GUIDE DETAIL
 (CHANNEL SHOWN; WELDED PLATES SIMILAR)



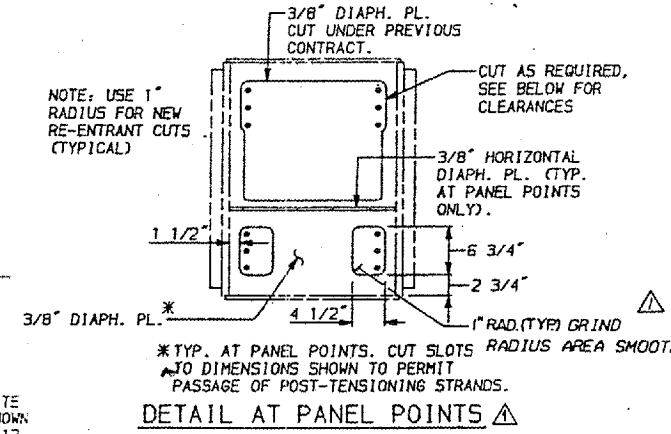
SECTION T-T

(FOR CHANNEL STRAND GUIDE)
 (UNIT II - 60 REQ'D, UNIT V - 76 REQ'D)

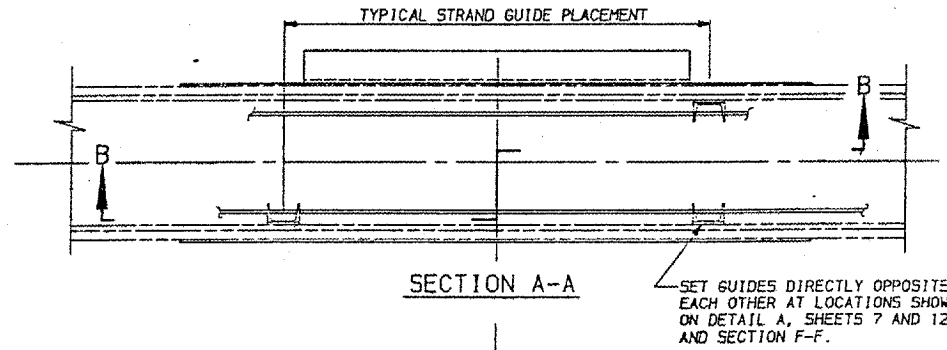


SECTION T-T

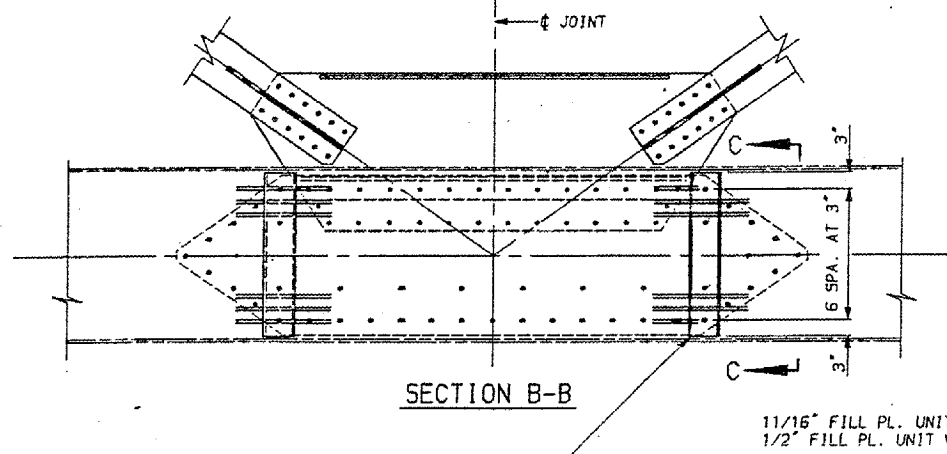
(FOR WELDED PLATE STRAND GUIDE)
 (UNIT II - 8 REQ'D, UNIT V - 8 REQ'D)



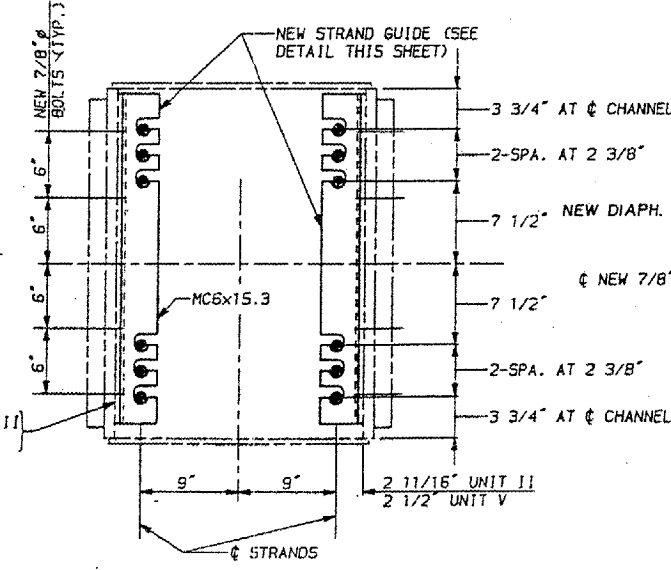
DETAIL AT PANEL POINTS



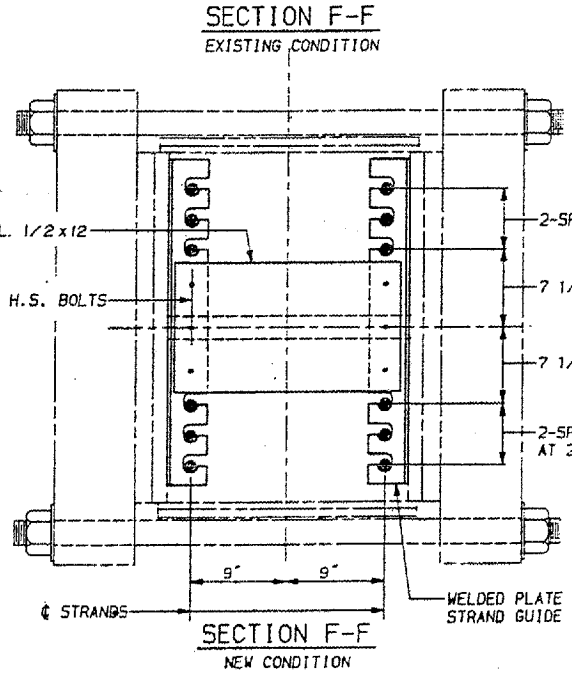
SECTION A-A



SECTION B-B



SECTION C-C



SECTION F-F

EXISTING CONDITION

SECTION F-F

NEW CONDITION

PREPARED BY
MODJESKI AND MASTERS
 CONSULTING ENGINEERS

DATE: 10/11/88