

F.A.I. 24	3B-1-6	MASSAC	11	8	5 SHEETS
-----------	--------	--------	----	---	----------

STATE OF ILLINOIS  
 DEPARTMENT OF TRANSPORTATION

\*\*\* Sealant applicable to Structural Steel. Cost incidental to Furnishing & Erecting Structural Steel.

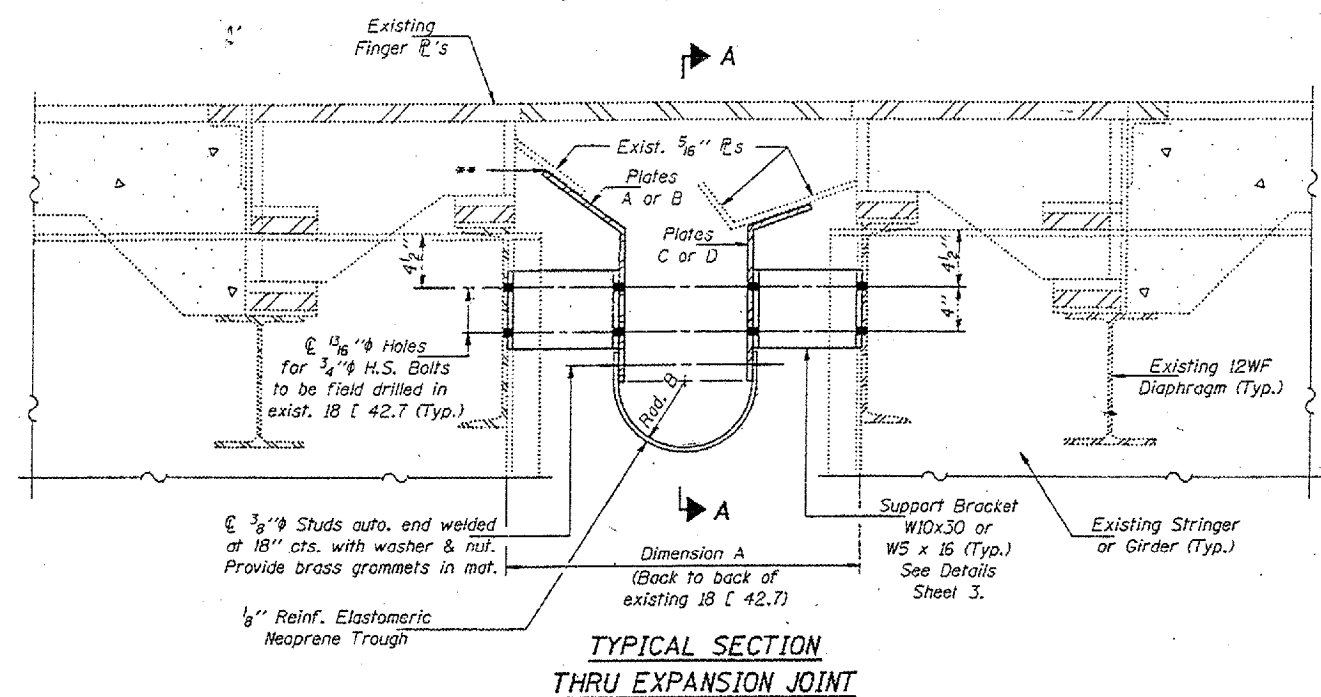
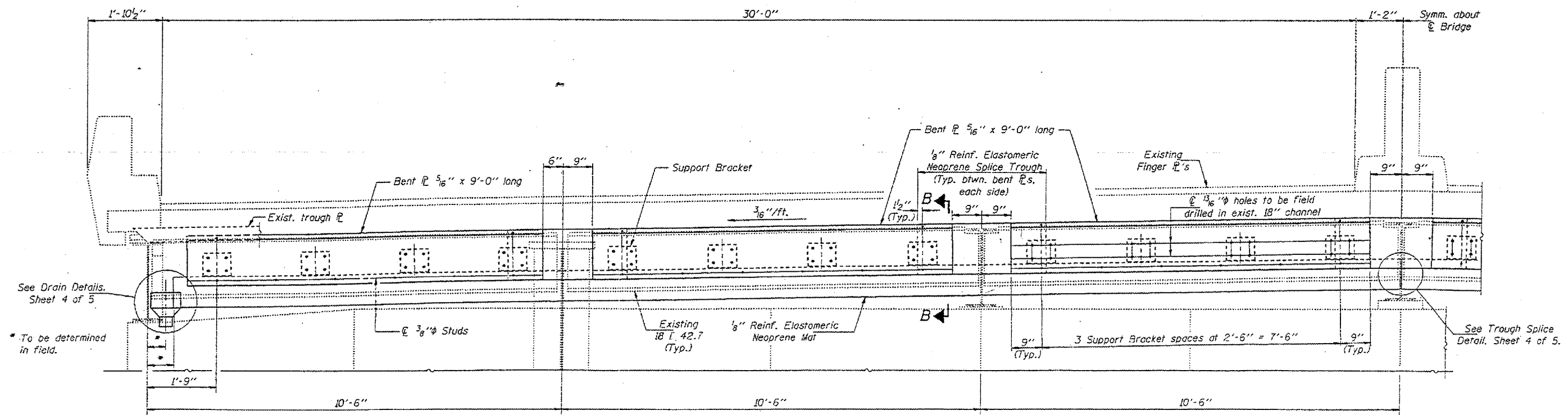


TABLE OF DIMENSIONS

LOCATION	DIMENSION AT TEMPERATURE (F.)										SUPPORT BRACKET SIZE
	20°		40°		60°		80°		100°		
	Dim. A	Rad. B	Dim. A	Rad. B	Dim. A	Rad. B	Dim. A	Rad. B	Dim. A	Rad. B	
Pier #3	2'-7 1/8"	5 1/16"	2'-5 1/16"	4 7/8"	2'-4 1/4"	3 5/8"	2'-2 13/16"	2 5/16"	2'-1 5/16"	2 3/16"	W10x30
Pier #4	1'-7 1/8"	4 3/16"	1'-6 7/16"	4 1/4"	1'-5 3/4"	3 7/8"	1'-5 1/16"	3 9/16"	1'-4 5/16"	3 3/16"	W5x16
Pier #8	3'-2 3/4"	8 7/8"	3'-0 3/8"	7 1/16"	2'-10"	6 1/2"	2'-7 5/8"	5 5/16"	2'-5 9/16"	4 1/8"	W10x30
Pier #12	3'-0 1/16"	7 7/8"	2'-10 1/8"	6 5/16"	2'-9"	6"	2'-7 7/8"	5 1/16"	2'-5 5/16"	4 1/8"	W10x30
Pier #13	1'-9 3/8"	5 13/16"	1'-8 1/16"	5 3/8"	1'-7 3/4"	4 7/8"	1'-6 13/16"	4 7/16"	1'-5 7/8"	3 5/16"	W5x16

Notes: For Section B-B, see sheet 4.



DESIGNED	KPS	FEBRUARY 29	1996
CHECKED	NJS	EXAMINED	<i>John E. Adams</i>
DRAWN	D-Herbert	PASSED	
CHECKED	NJS KPS		

ENGINEER OF BRIDGES AND STRUCTURES

SECTION A-A  
 (R C or D shown,  
 R A or B similar)

BRIDGE REPAIRS  
 F.A.I. 24 OVER OHIO RIVER  
 SEC. 64-3B-1-3  
 MASSAC COUNTY  
 S.N. 064-0035