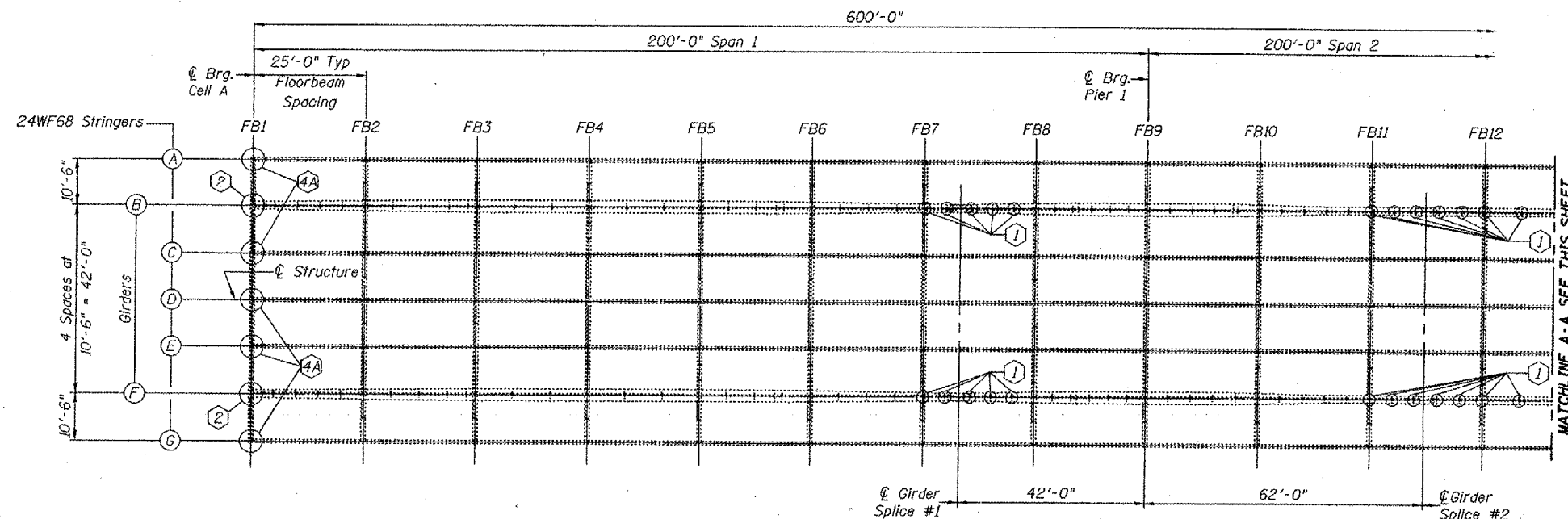


STATE OF ILLINOIS  
DEPARTMENT OF TRANSPORTATION

ROUTE NO.	SECTION
24	*
* 64-3B	

CONTRACT: 98990  
ROUTE: INTERSTATE 24  
SECTION: (64-3B) I-6  
COUNTY: MASSAC, IL; McCracken, KY  
SHEET 82 OF 99  
FOR INFORMATION ONLY

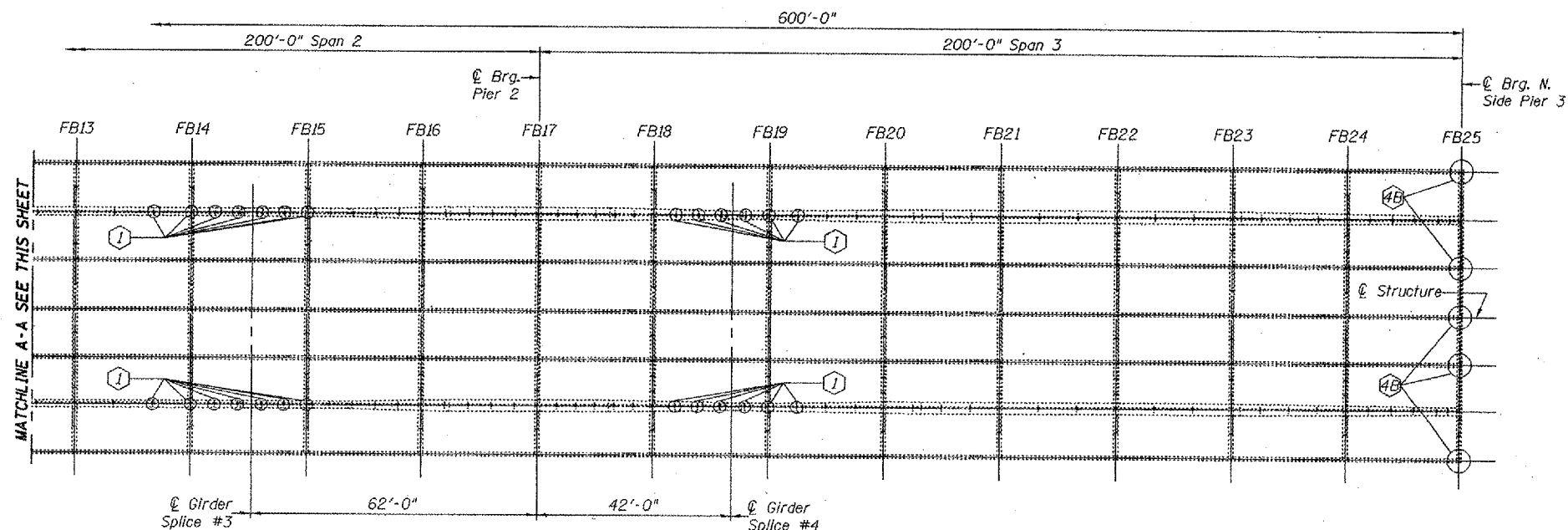


**PARTIAL FRAMING PLAN  
SPANS 1 AND 2**

Notes:

FB\*\*\* = Floor Beam Number

- ① Core drill longitudinal stiffeners. See repair detail "P" on sheet 18 of 22.
  - ② Remove and replace existing Rocker Bearings with Pot Bearings and Concrete Pedestals. See repair detail "Q" on sheets 19 and 20 of 22.
  - \* ④A Stringer end repair. See repair detail "A" on sheet 11 of 22.
  - \* ④B Stringer end repair. See repair detail "B" on sheet 11 of 22.
- \* Before installing angles, grind stringer end (See Detail on Sheet 10 of 22).



**PARTIAL FRAMING PLAN  
SPANS 2 AND 3**

DESIGNED	P.S.J.
CHECKED	V.H.V.
DRAWN	Drew Christopher
CHECKED	P.S.J. V.H.V.

December 6, 2002  
EXAMINED *John A. Morris*  
PASSED  
ENGINEER OF BRIDGES AND STRUCTURES

**FRAMING PLANS  
F.A.I. 24 OVER OHIO RIVER  
MASSAC COUNTY  
S.N. 064-0035**