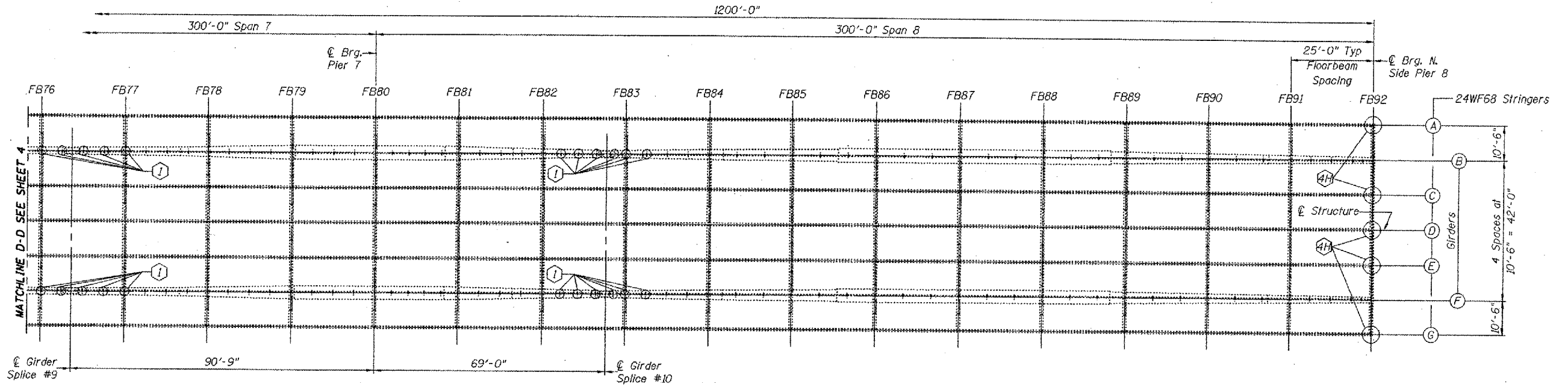


STATE OF ILLINOIS  
DEPARTMENT OF TRANSPORTATION

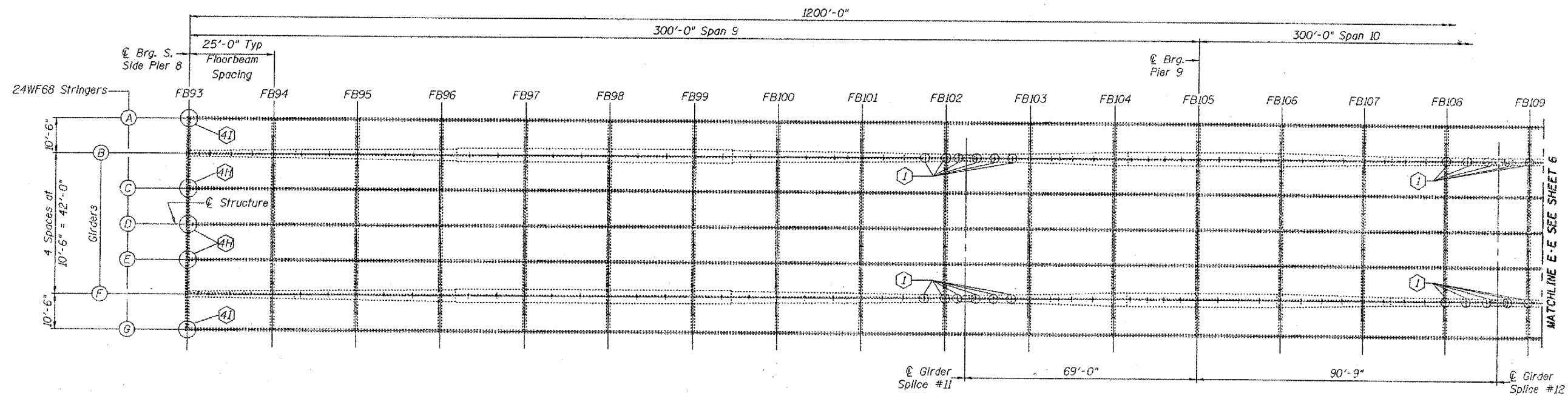
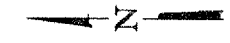
CONTRACT: 98990  
ROUTE: INTERSTATE 24  
SECTION: (64-3B) I-6  
COUNTY: MASSAC, IL; McCracken, KY  
SHEET 85 OF 95  
FOR INFORMATION ONLY

ROUTE NO.	SHEET
F.A.I. 24	*
FED. ROAD DIST. NO. 1	

\*64-3B-I-5



**PARTIAL FRAMING PLAN  
SPANS 7 AND 8**



**PARTIAL FRAMING PLAN  
SPANS 9 AND 10**

Notes:

FB\*\*\* = Floor Beam Number

- Ⓜ Core drill longitudinal stiffeners. See repair detail "P" on sheet 18 of 22.
- \* 4H Stringer end repair. See repair detail "H" on sheet 14 of 22.
- \* 4I Stringer end repair. See repair detail "I" on sheet 15 of 22.

\* Before installing angles, grind stringer end (See Detail on Sheet 10 of 22).

DESIGNED	P.S.J.
CHECKED	V.H.V.
DRAWN	Drew Christopher
CHECKED	P.S.J. V.H.V.

December 6, 2002  
EXAMINED *John A. Morris*  
ENGINEER OF STRUCTURAL SERVICES  
PASSED  
ENGINEER OF BRIDGES AND STRUCTURES

**FRAMING PLANS  
F.A.I. 24 OVER OHIO RIVER  
MASSAC COUNTY  
S.N. 064-0035**