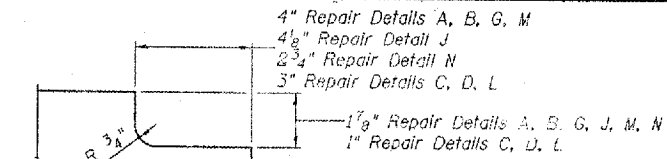


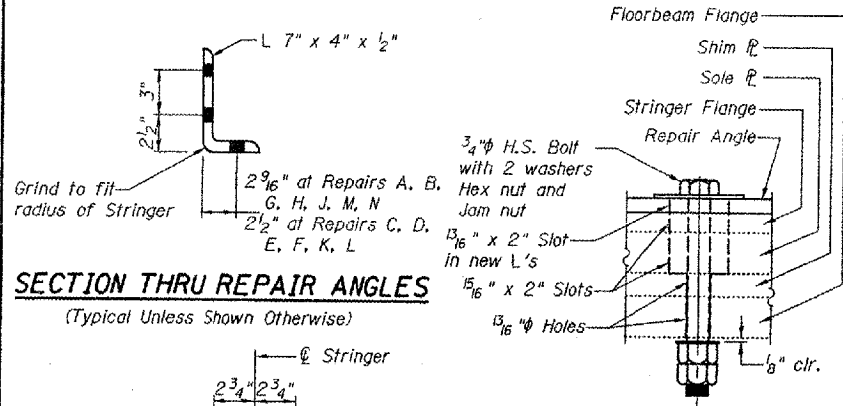
STATE OF ILLINOIS
DEPARTMENT OF TRANSPORTATION

ROUTE NO.
FAI
21
FED. ROAD DIST.

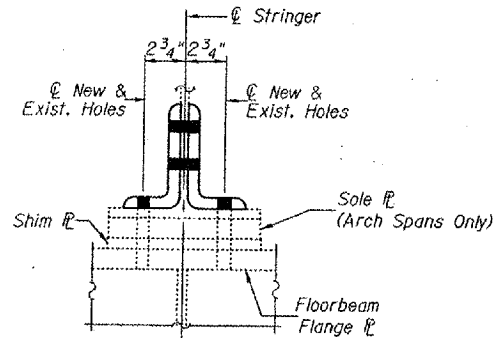
CONTRACT: 98990
ROUTE: INTERSTATE 24
SECTION: (64-3B)1-6
COUNTY: MASSAC, IL; McCRACKEN, KY
SHEET 91 OF 99
FOR INFORMATION ONLY



REPAIR ANGLE COPE DETAIL



SECTION THRU REPAIR ANGLES
(Typical Unless Shown Otherwise)



TYPICAL SECTION AT SLOTTED HOLES

TYPICAL END VIEW OF STRINGERS

Notes:
Thickness of floorbeam flange varies by location. In calculating required bolt length, allow 1/2" flange thickness for all locations in the girder spans (Repairs A, B, G, H, I, J, M, N). See Table for locations in the arch spans.

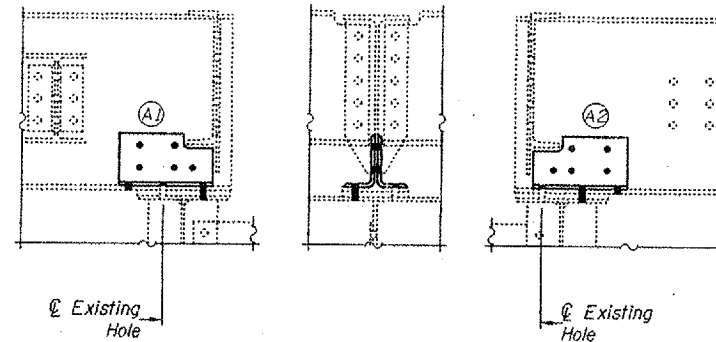
Thickness of shim varies by location. In calculating required bolt length, allow 2 3/4" shim thickness at Stringer D of the girder spans (Repairs A, B, G, H, J, M, N). Allow 1 1/8" for shim thickness at all other locations.

Thickness of sole varies by location. See table.

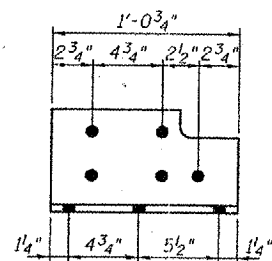
Span ID	Repair	Stringer	Flange Thickness	Sole Thickness
4	C, D	A, B, C, E, F, G D	1 3/8" 1 7/8"	1 3/8" 2 1/16"
	E, F	A, B, C, E, F, G D	1 1/8" 1 7/8"	1 7/8" 2 1/16"
13	E, F	A, B, C, E, F, G D	1" 1"	2" 2 15/16"
	K, L	A, G B, F C, D, E	1 3/8" 1" 1"	1 5/8" 2" 2 15/16"

DESIGNED Drew Christopher
CHECKED V.H.V.
DRAWN Drew Christopher
CHECKED P.S.J. V.H.V.

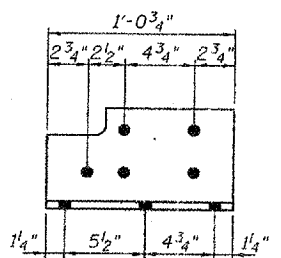
December 6, 2002
EXAMINED John A. Morris
ENGINEER OF STRUCTURAL SERVICES
PASSED
ENGINEER OF BRIDGES AND STRUCTURES



STRINGERS C, D & E
(Stringers A & G Similar)

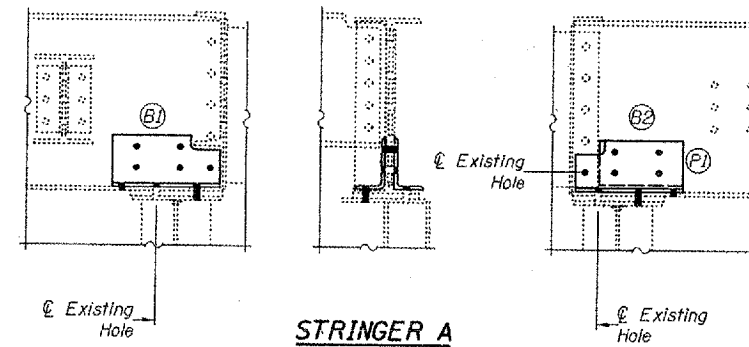


ANGLE A1

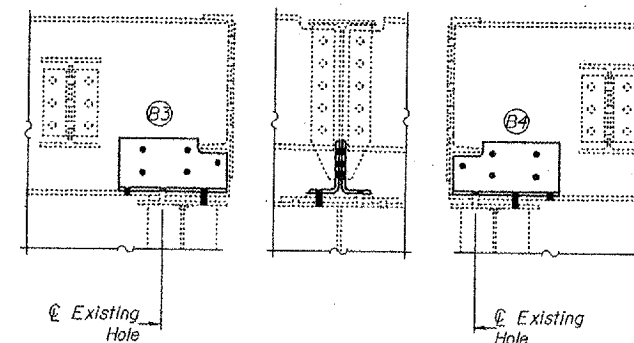


ANGLE A2

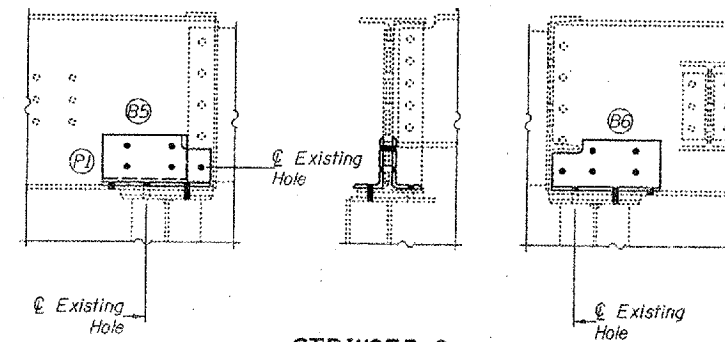
REPAIR DETAIL "A"



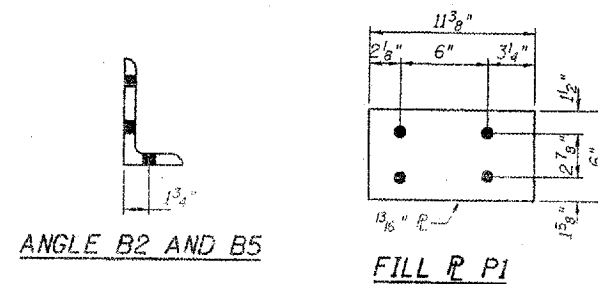
STRINGER A



STRINGERS C, D & E

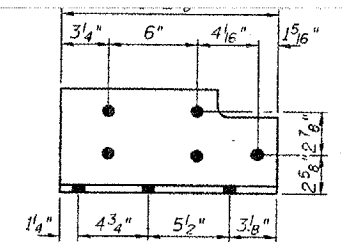


STRINGER G

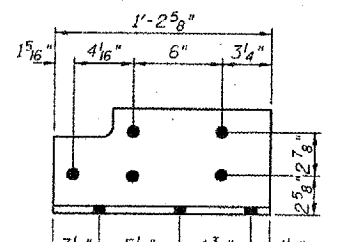


ANGLE B2 AND B5

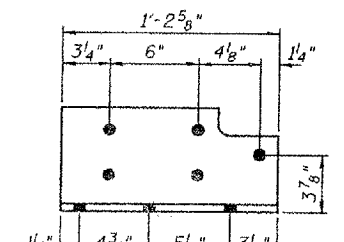
REPAIR DETAIL "B"



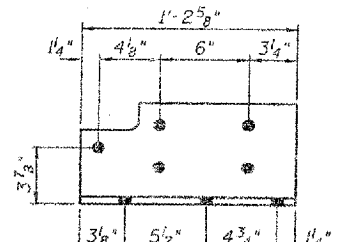
ANGLE B1 AND B5



ANGLE B2 AND B6



ANGLE B3



ANGLE B4

STRINGER END GENERAL DETAILS
REPAIR DETAIL "A" AND "B"
F.A.I. 24 OVER OHIO RIVER
MASSAC COUNTY
S.N. 064-0035