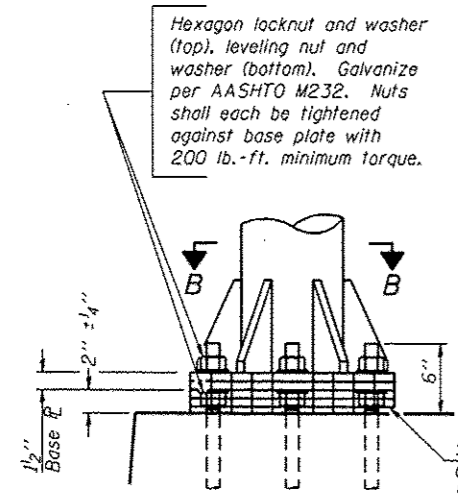


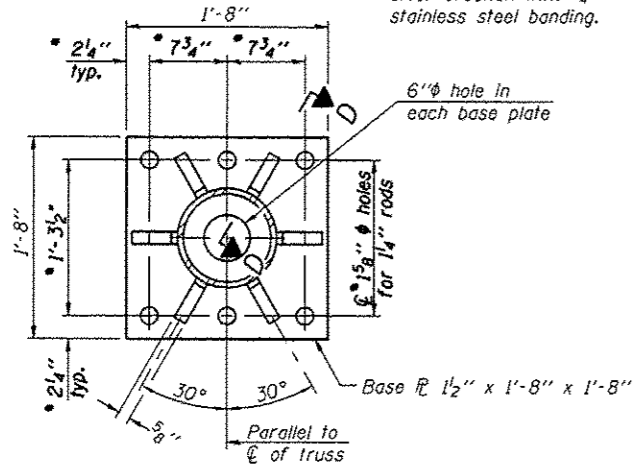
NON STANDARD DESIGN



Hexagon locknut and washer (top), leveling nut and washer (bottom). Galvanize per AASHTO M232. Nuts shall each be tightened against base plate with 200 lb.-ft. minimum torque.

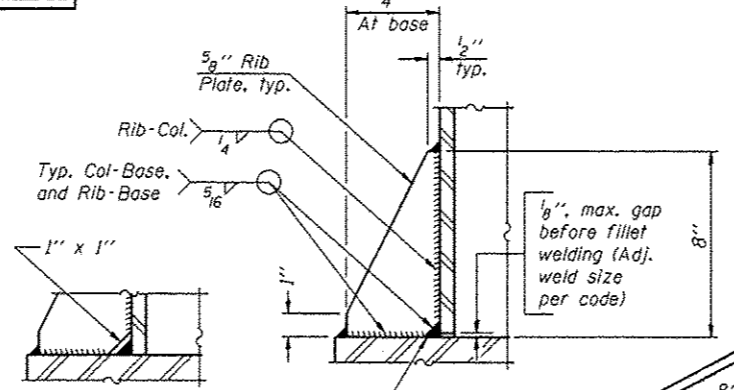
DETAIL B

Ribs shall be cut to fit slope of pipe.
 Stainless Steel Standard Grade Wire Cloth, 3" wide, 1/4" maximum opening with a minimum wire diameter of AWG. No. 16 with a minimum 2" lap. Secure to base plate after erection with 3/4" stainless steel banding.



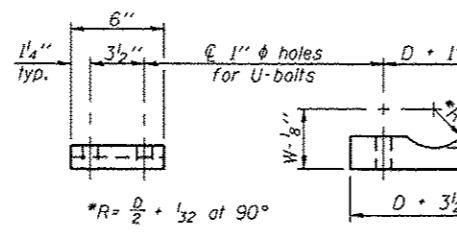
SECTION B-B

* Non-Standard dimension to match existing foundations



SECTION D-D

** Alternate detail if welding col. to base plate first, then snip inside corner of ribs. Terminate weld on rib 1/4" from snip.
 No snip req'd. at rib inside corner if placed before col. to base plate welding.

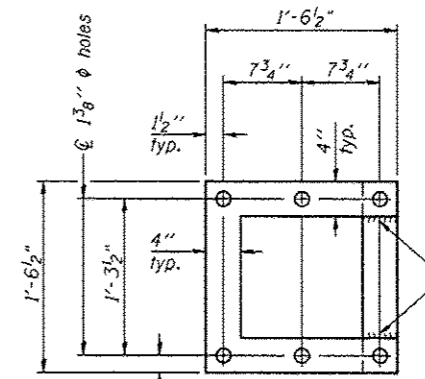


SADDLE SHIM DETAIL

ASTM B26 Alloy 356-F
 or
 ASTM B209 Alloy 6061-T651 (4 required per sign truss)

Truss Chord Nominal Dia.	a
5"	3/4"
5 1/2"	13/16"
6"	7/8"
6 1/2"	15/16"
7"	1"

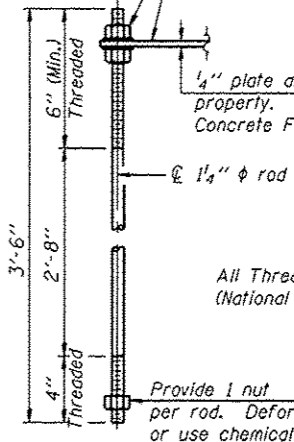
*R = D/2 + 1/32 at 90°
 D = Outside Diameter of Chord.
 For W, see Base Sheet OS-A-6.



POSITIONING PLATE(S)

Optionally may use four (4) separate bars. Weld to maintain perpendicularity.

At each location, provide 1/4" thick positioning plate(s) and six (6) additional nuts to be used with leveling nuts to maintain anchor bolts position during concrete placement.



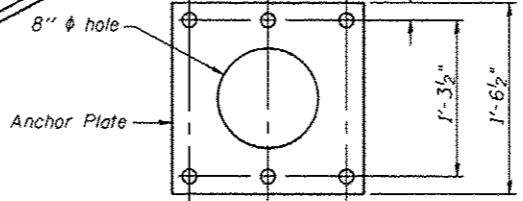
ANCHOR ROD DETAIL

Drilled Shaft Foundation

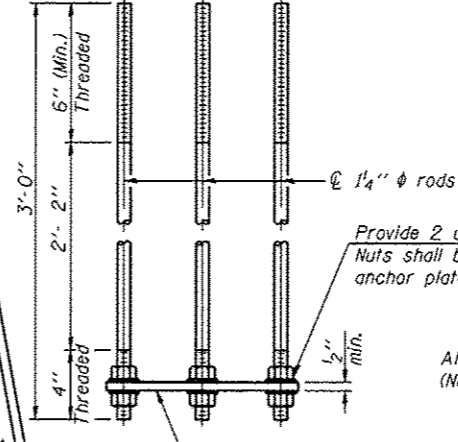
1/4" plate and extra nuts become Contractor's property. Cost included in Drilled Shaft Concrete Foundations.

All Thread = NC (National Coarse)

Provide 1 nut per rod. Deform thread or use chemical thread lock to secure.



Anchor Plate



ANCHOR ROD DETAIL

Spread Footing Foundation

Provide 2 uncoated nuts per rod. Nuts shall be "snug tight" against anchor plate.

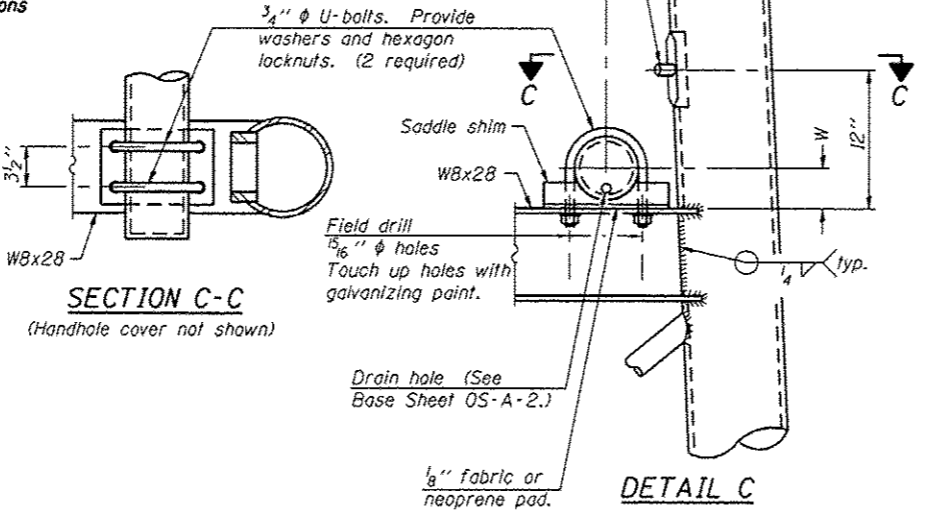
All Thread = NC (National Coarse)

Anchor rods shall conform to ASTM F1554 Grade 105. Galvanize upper 12" minimum per AASHTO M232. No welding shall be permitted on rods.

RE-USING EXISTING ANCHOR RODS - INFORMATION ONLY

NOTES: Locations 5-01, 5-04, 5-07, 5-08, and 5-09

1. New End Supports to be installed on existing concrete foundations and existing anchor bolts. Contractor shall furnish and install new anchor rod locknuts, leveling nuts, and washers. Anchor rod nuts and washers shall be galvanized per Article 1094.02, Article 1006.09, and AASHTO M232.
2. The Contractor shall field verify the existing end support dimensions and the existing anchor bolt dimensions to verify the "non-standard" dimensions provided in the plans prior to fabrication of the new end supports.
3. Removing all grout between the base plate and the foundation, cleaning and painting the exposed anchor bolts, and installing a stainless steel screen will be paid for under "Overhead Sign Support Grout Repair".



SECTION C-C

(Handhole cover not shown)

DETAIL C

10" Ø PIPE SUPPORT FRAME DETAILS

OS-A-6A

6-1-12

• D-5 OVD SIN STR REPL 2013-09

FILE NAME	USER NAME	DESIGNED	REVISED
c:\pr-work\p\dots\backless\j\d8388231\054222-Sht-Sign-Structure-Details.dgn	bucklesj	-	-
		DRAWN	REVISED
		CHECKED	REVISED
		DATE	REVISED

STATE OF ILLINOIS
 DEPARTMENT OF TRANSPORTATION

OVERHEAD SIGN STRUCTURES
 SUPPORT FRAME DETAILS - ALUMINUM TRUSS

F.A.I. RTE.	SECTION	COUNTY	TOTAL SHEETS	SHEET NO.
74		CHAMPAIGN	50	44
			CONTRACT NO. 46222	
[ILLINOIS] FED. AID PROJECT				

SCALE: SHEET OF SHEETS STA. TO STA.