

TYPICAL TRUSS UNIT  
(Sign and walkway omitted for clarity)

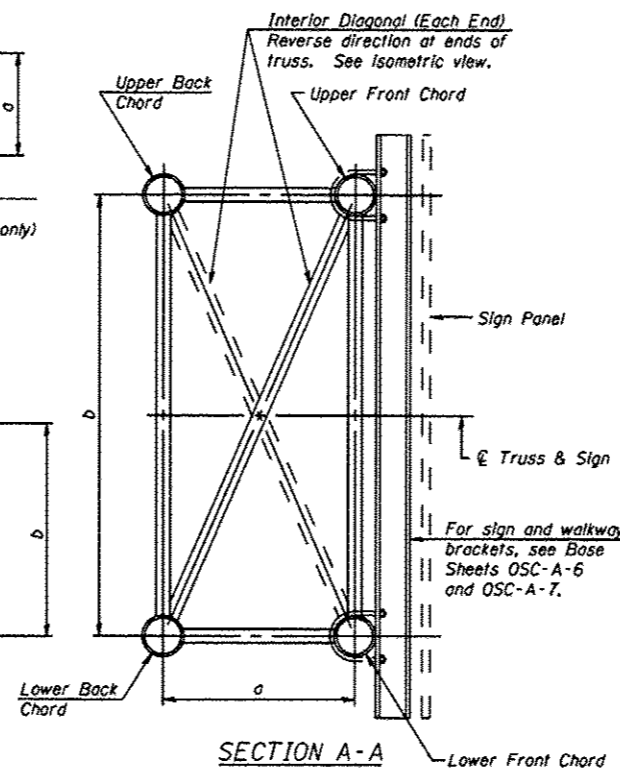
Note:  
There are twice as many horizontal diagonals as there are vertical diagonals.

TRUSS UNIT TABLE

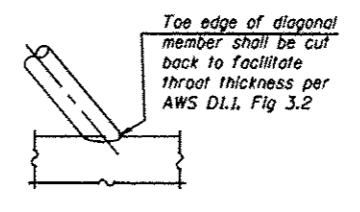
Truss Type	Dimension "a"	Dimension "b"	Dimension "s"	Limits for Panel Spacing (P)*	Verticals, Horizontals, Vertical, Horizontal, and Interior Diagonals		
					Up. & Low. Chord O.D.	Wall	O.D.
I-C-A	24"	54"	16"	36" min. to 48" max.	5"	5/16"	2 1/2"
II-C-A	36"	66"	21"	42" min. to 54" max.	6 1/2"	5/16"	3 1/4"
III-C-A (35' Max.)	36"	84"	21"	48" min. to 66" max.	7"	3/8"	3 1/2"
III-C-A (>35' to 40')	36"	84"	21"	48" min. to 66" max.	8"	3/8"	3 1/2"

\*P =  $\frac{L \cdot s \cdot 3}{\# \text{ Panels}}$

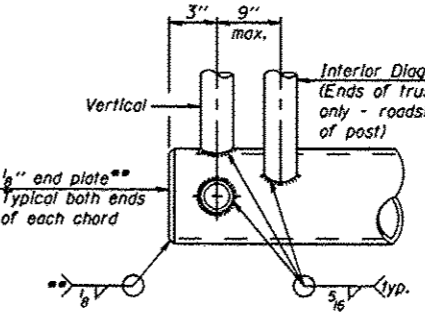
Structure Number	Station	Truss Type	Design Length (L)	Number of Panels Per Unit	Panel Length (P)*
6C068S016R01.19	132+15	III-C-A	35'-0"	6	5'-6"
6C068S016L00.87	128+00	III-C-A	35'-0"	6	5'-6"
6C0541055R132.2	703+85	II-C-A	30'-0"	7	4'-0"



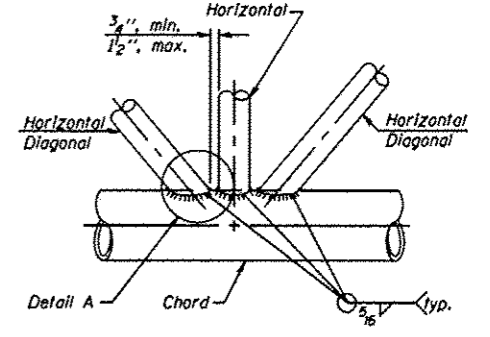
SECTION A-A



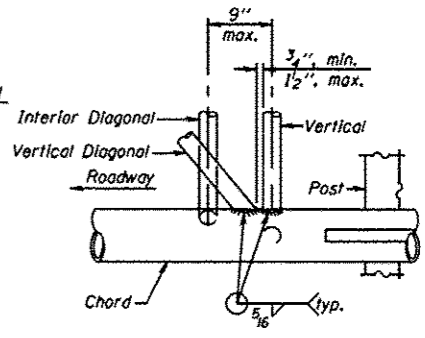
DETAIL A



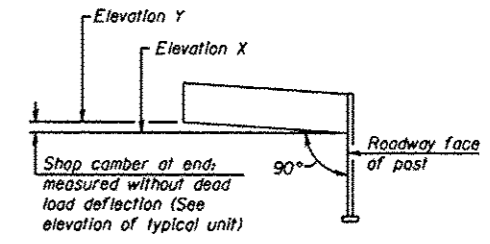
CANTILEVER END JOINT DETAIL



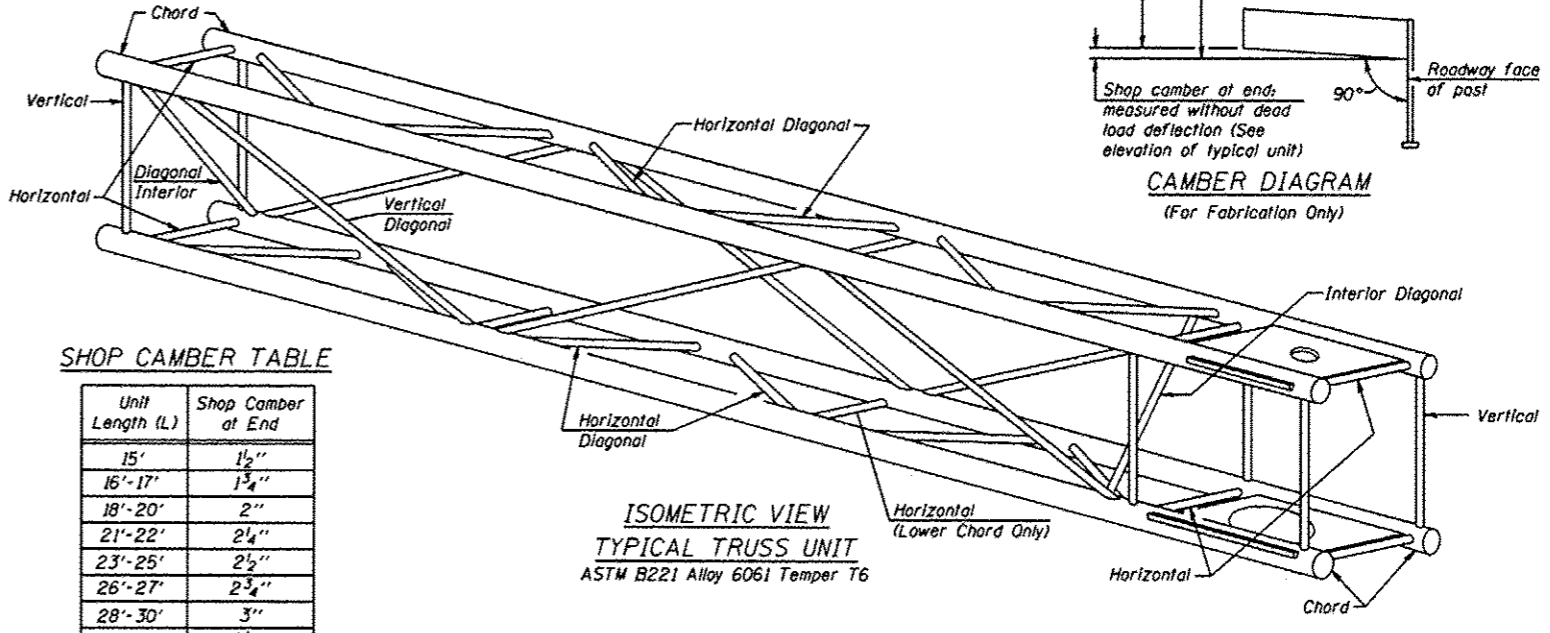
TRUSS INTERIOR JOINT DETAIL



POST END JOINT DETAIL



CAMBER DIAGRAM  
(For Fabrication Only)



ISOMETRIC VIEW  
TYPICAL TRUSS UNIT  
ASTM B221 Alloy 6061 Temper T6

SHOP CAMBER TABLE

Unit Length (L)	Shop Camber at End
15'	1 1/2"
16'-17'	1 3/4"
18'-20'	2"
21'-22'	2 1/4"
23'-25'	2 1/2"
26'-27'	2 3/4"
28'-30'	3"
31'-32'	3 1/4"
33'-35'	3 1/2"
36'-37'	4"
38'-40'	4 1/2"

OSC-A-2 1-20-11