

F.A.P. RTE.	SECTION	COUNTY	TOTAL SHEETS	SHEET NO.
330	0105 WRS&HB	COOK	805	1
ILLINOIS			CONTRACT NO. 60G37	

605 21 = 606

FOR INDEX OF SHEETS, SEE SHEET NO. 3

STATE OF ILLINOIS
DEPARTMENT OF TRANSPORTATION

DIVISION OF HIGHWAYS

**PROPOSED
HIGHWAY PLANS**

F.A.P. 330 (US 12/45)

**MANNHEIM ROAD SOUTH (IRVING PARK ROAD (IL 19) TO I-190)
RECONSTRUCTION**

SECTION: 0105 WRS&HB
PROJECT: ACNHF-0330(070)

COOK COUNTY
C-91-399-09

VOLUME 1 OF 2

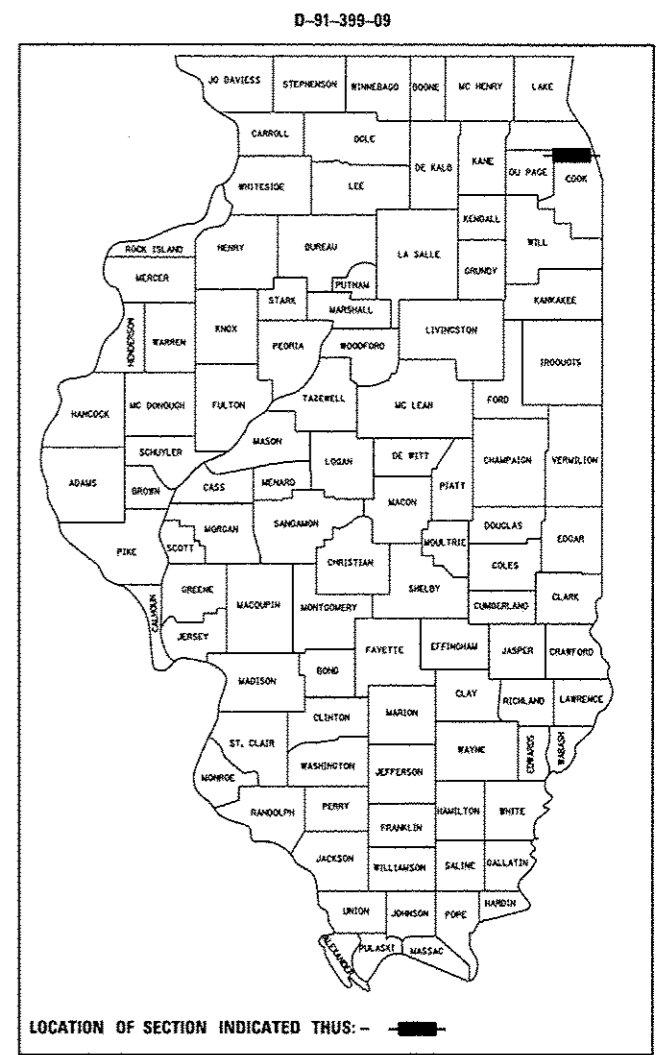
TRAFFIC DATA

	2009 ADT	2030 ADT
MANNHEIM ROAD	41,500	86,900
MONTROSE AVE	4,100	4,600
LAWRENCE AVE	17,300	23,950

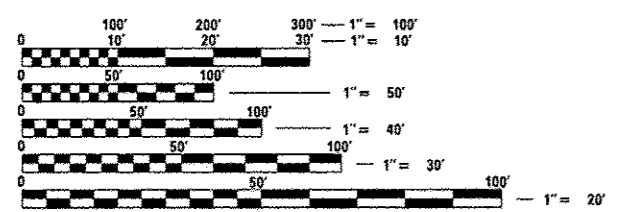
	DESIGN SPEED	POSTED SPEED
MANNHEIM ROAD	50 MPH	50 MPH
MONTROSE AVE	30 MPH	30 MPH
LAWRENCE AVE	35 MPH	35 MPH

DESIGN DESIGNATION

MANNHEIM ROAD	7950(30) PRINCIPAL ARTERIAL 33.35(PCC-30)
MONTROSE AVE	420(30) COLLECTOR 33.35(PCC-30)
LAWRENCE AVE	2160(30) MINOR ARTERIAL 33.35(PCC-30)

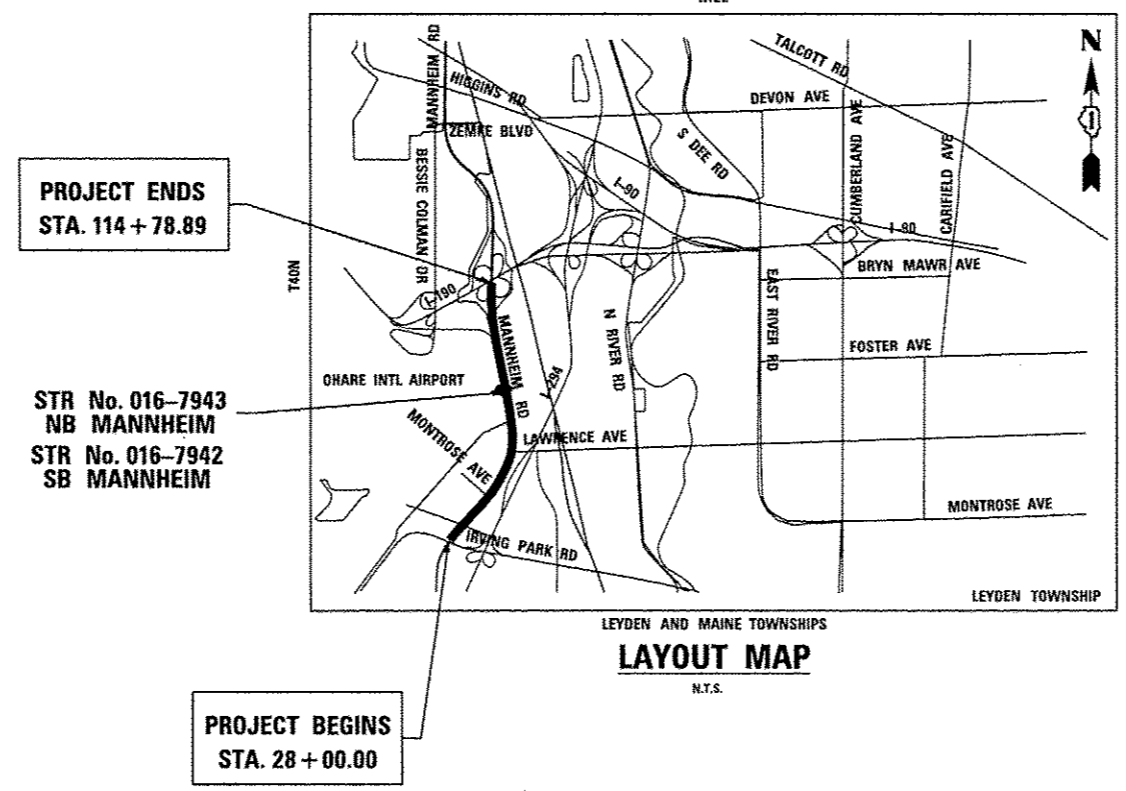


LOCATION OF SECTION INDICATED THUS: - [black rectangle] -



FULL SIZE PLANS HAVE BEEN PREPARED USING STANDARD ENGINEERING SCALES. REDUCED SIZED PLANS WILL NOT CONFORM TO STANDARD SCALES. IN MAKING MEASUREMENTS ON REDUCED PLANS, THE ABOVE SCALES MAY BE USED.

FOR UTILITY INFORMATION CALL J.U.L.I.E. (JOINT UTILITY LOCATION INFORMATION FOR EXCAVATION) AT (800) 892-0123 48 HOURS BEFORE DIGGING



PROJECT ENDS
STA. 114 + 78.89

STR No. 016-7943
NB MANNHEIM
STR No. 016-7942
SB MANNHEIM

PROJECT BEGINS
STA. 28 + 00.00

LAYOUT MAP
N.T.S.

GROSS LENGTH = 8,678.89 FT. = 1.644 MILE
NET LENGTH = 8,678.89 FT. = 1.644 MILE

STATE OF ILLINOIS
DEPARTMENT OF TRANSPORTATION
DIVISION OF HIGHWAYS

SUBMITTED October 22 20 12

John Fontana
DEPUTY DIRECTOR OF HIGHWAYS, REGION ENGINEER

Dec 7 20 12
John D. Baranzelli, P.E.
ENGINEER OF DESIGN AND ENVIRONMENT

Dec 7 20 12
William R. Freiler
DIRECTOR OF HIGHWAYS, CHIEF ENGINEER

HNTB TENG

PRINTED BY THE AUTHORITY
OF THE STATE OF ILLINOIS

CONTRACT NO. 60G37

DISTRICT ONE DESIGN CONSULTANT SERVICES MANAGER: SERIN KELLER (847) 705-4556