

ALIGNMENT COORDINATES MANNHEIM ROAD			
	STATION	N	E
POT	00+00.00	1925035.57	1106038.00
PC	12+83.40	1926318.93	1106029.53
PI	20+35.71	1927071.23	1106024.57
PT	27+16.73	1927624.81	1106534.01
PC	43+71.38	1928842.36	1107654.46
PI	60+87.10	1930104.86	1108816.28
PT	75+32.09	1931778.67	1108439.36
PC	98+63.64	1934053.26	1107927.15
PI	105+80.05	1934752.17	1107769.77
PT	112+89.06	1935468.31	1107789.32
POT	132+23.42	1937401.95	1107842.10

ALIGNMENT COORDINATES MONTROSE AVENUE			
	STATION	N	E
POT	2+55.00	1929399.25	1107153.16
POT	10+00.00	1928910.20	1107715.17

ALIGNMENT COORDINATES LAWRENCE AVENUE			
	STATION	N	E
POT	10+00.00	1930374.52	1108446.91
POT	13+83.99	1930384.38	1108830.77
POT	15+42.86	1930396.39	1108989.18
POT	19+25.29	1930406.21	1109371.49

ALIGNMENT COORDINATES RAMP M2CD1			
	STATION	N	E
POT	900+00.00	1933787.25	1108048.05
PC	905+25.82	1934307.03	1107968.60
PI	906+32.60	1934412.58	1107952.46
PT	907+39.18	1934519.26	1107947.65
PC	910+48.25	1934828.02	1107933.76
PI	911+89.38	1934969.01	1107927.41
PT	913+23.36	1935092.51	1107995.72
POT	913+63.41	1935127.56	1108015.10

ALIGNMENT COORDINATES RAMP SBEB			
	STATION	N	E
POT	1000+00.00	1935571.48	1107732.61
PC	1000+35.22	1935536.27	1107731.65
PI	1001+02.27	1935469.25	1107729.82
PCC	1001+65.21	1935415.15	1107690.22
PI	1002+13.42	1935376.25	1107661.75
PCC	1002+60.81	1935348.23	1107622.52
PI	1005+55.80	1935176.76	1107382.48
PT	1006+50.81	1935463.22	1107312.05

ALIGNMENT COORDINATES RAMP EBNB			
	STATION	N	E
POT	1100+00.00	1935529.17	1108285.67
PC	1101+03.69	1935462.71	1108206.07
PI	1105+80.14	1935157.33	1107840.35
PT	1105+96.86	1935633.61	1107853.35
POT	1106+49.09	1935685.83	1107854.78

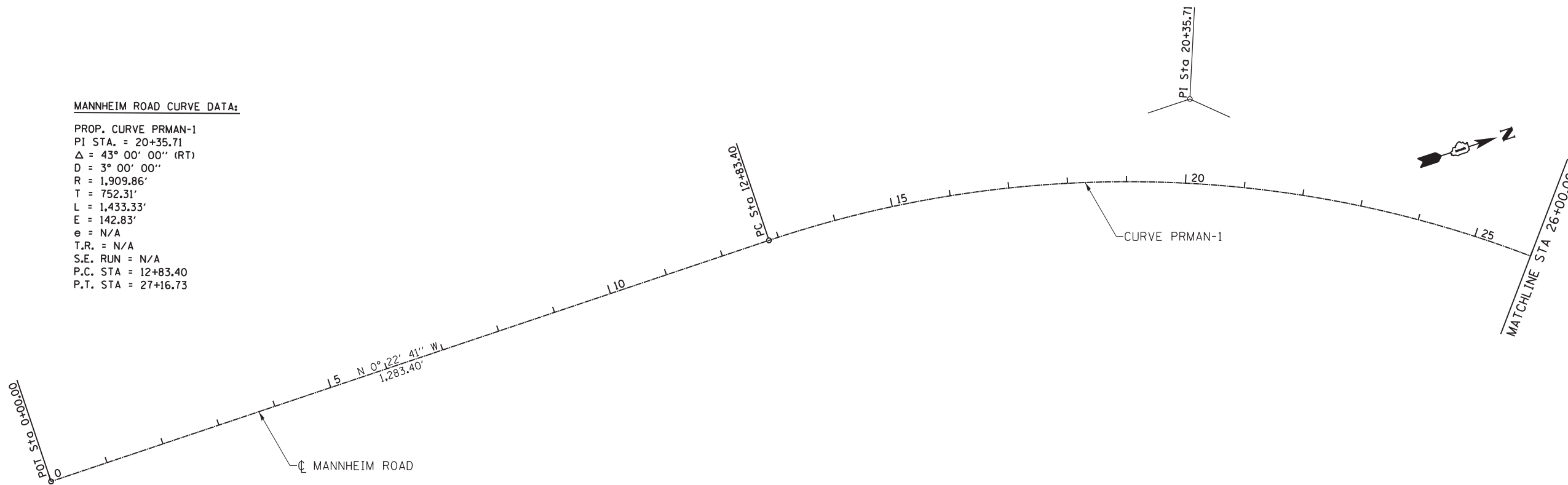
ALIGNMENT COORDINATES RAMP A			
	STATION	N	E
PC	10+00.00	1931122.80	1108581.74
PI	12+45.32	1931368.07	1108577.08
PCC	14+90.25	1931611.71	1108548.43
PI	15+85.19	1931706.00	1108537.35
PT	16+08.08	1931799.51	1108520.91
PC	18+32.20	1931949.34	1108494.58
PI	19+71.50	1932086.53	1108470.48
PT	21+03.91	1932216.43	1108520.78
POT	22+23.57	1932325.47	1108570.09

ALIGNMENT COORDINATES RAMP B			
	STATION	N	E
PC	1200+00.00	1932774.46	1108610.84
PI	1202+21.66	1932561.94	1108547.85
PCC	1203+11.63	1932677.89	1108358.93
PI	1203+36.17	1932690.73	1108338.01
PCC	1203+60.29	1932709.57	1108322.27
PI	1203+99.56	1932739.71	1108297.10
PT	1204+37.48	1932777.84	1108287.69
POT	1210+28.33	1933351.49	1108146.17

BENCHMARK COORDINATES MANNHEIM ROAD				
	STATION	OFFSET	ELEVATION	DESCRIPTION
TBM1	31+01.81	84.87 LT	642.54	CHISLED SQUARE EAST SIDE OF LP*BDN2 CONC BASE ON WEST SIDE MANNHEIM RD. 300' • NORTH OF IRVING PARK
TBM2	44+15.85	70.02 LT	650.20	CHISLED SQUARE EAST SIDE OF MAST ARM CONC BASE ON SW CORNER MANNHEIM AND MONTROSE
TBM3	60+47.58	59.73 LT	642.18	CHISLED SQUARE WEST SIDE OF MAST ARM CONC BASE AT SW QUAD MANNHEIM AND LAWRENCE
TBM4	85+11.52	122.53 RT	641.07	SQUARE CUT ON NW CORNER OF CONC PAD OF RUNWAY LANDING GUIDE LIGHT (STA 20 FL5)
TBM5	83+33.02	121.10 RT	643.08	CHISLED SQUARE ON NW CORNER CONC PAD OF COMMUNICATIONS HANDHOLE IN IN FIELD OF BALMORAL AVE RAMPS
TBM6	94+78.71	90.84 RT	643.11	SQUARE CUT ON NE CORNER OF SIGN TRUSS CONC BASE ON EAST SIDE MANNHEIM RD.
TBM7	113+87.34	69.30 LT	642.47	SQUARE CUT ON WINGWALL AT SW QUAD OF I190 AND MANNHEIM RD.

**MANNHEIM ROAD CURVE DATA:**

PROP. CURVE PRMAN-1  
 PI STA. = 20+35.71  
 $\Delta = 43^\circ 00' 00''$  (RT)  
 $D = 3^\circ 00' 00''$   
 $R = 1,909.86'$   
 $T = 752.31'$   
 $L = 1,433.33'$   
 $E = 142.83'$   
 $e = N/A$   
 $T.R. = N/A$   
 $S.E. RUN = N/A$   
 $P.C. STA = 12+83.40$   
 $P.T. STA = 27+16.73$



USER NAME = ROBERT.ESQUIVEL	DESIGNED MT	REVISED -
PLOT SCALE = 100.0000' / in.	DRAWN MT	REVISED -
PLOT DATE = 10/18/2012	CHECKED VT	REVISED -
	DATE 10/19/2012	REVISED -

**STATE OF ILLINOIS  
DEPARTMENT OF TRANSPORTATION**

**ALIGNMENT, TIES & BENCHMARKS  
MANNHEIM ROAD**

SCALE: 1" = 100' SHEET NO. OF SHEETS STA. 00+00.00 TO STA. 26+00.00

F.A.P. RTE.	SECTION	COUNTY	TOTAL SHEETS	SHEET NO.
330	0105 WRS&HB	COOK	605	53
ILLINOIS FED. AID PROJECT				CONTRACT NO. 60G37