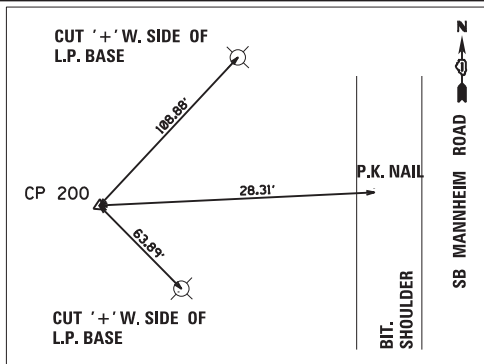


MATCHLINE STA 26+00.00

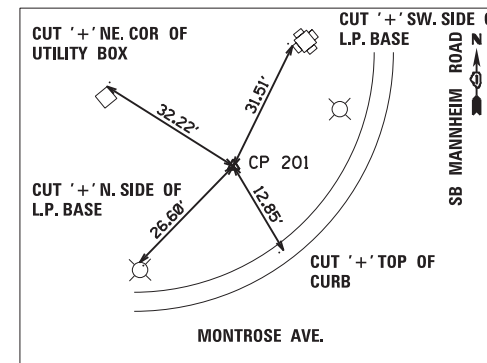
PROJECT IMPROVEMENT BEGINS  
 STA. 28+00.00 CL MANNHEIM ROAD  
 N = 1927686.08  
 E = 1106590.39

**CONTROL POINT #200**  
 SET I.R. W/YELLOW CAP  
 STA. 33 + 43.99, 81.50' LT  
 N 1928141.55  
 E 1106898.79  
 ELEV. 643.83

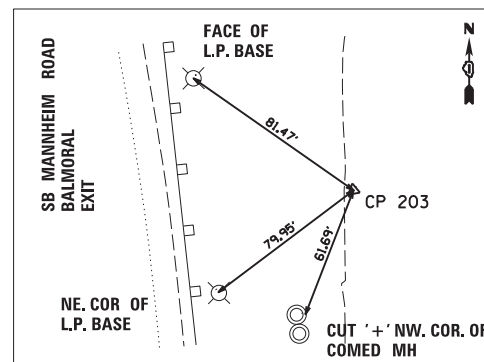


**MANNHEIM ROAD CURVE DATA:**  
 PROP. CURVE PRMAN-2  
 PI STA. = 60+87.10  
 $\Delta = 55^\circ 18' 45''$  (LT)  
 D = 1° 45' 00"  
 R = 3,274.04'  
 T = 1,715.72'  
 L = 3,160.72'  
 E = 422.32'  
 e = 3.20%  
 T.R. = 48'  
 S.E. RUN = 154'  
 P.C. STA = 43+71.38  
 P.T. STA = 75+32.09

**CONTROL POINT #201**  
 SET I.R. W/YELLOW CAP  
 STA. 45 + 17.80, 77.39' LT  
 N 1929002.10  
 E 1107691.94  
 ELEV. 649.79

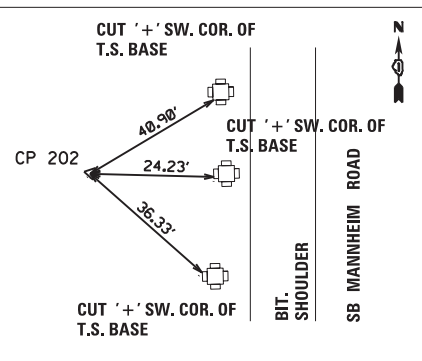


**CONTROL POINT #203**  
 SET I.R. W/YELLOW CAP  
 STA. 77 + 89.38, 143.15' RT  
 N 1931561.14  
 E 1108625.46  
 ELEV. 642.66



MATCHLINE STA 54+00.00

STA 10+00.00 LAWRENCE=  
 STA 61+16.93 MANNHEIM



**CONTROL POINT #202**  
 SET I.R. W/YELLOW CAP  
 STA. 61 + 19.32, 87.05' LT  
 N 1930395.01  
 E 1108362.16  
 ELEV. 641.16

PROJECT IMPROVEMENT ENDS  
 STA. 15+27.93 CL LAWRENCE  
 N = 1930395.26  
 E = 1108974.30

**RAMP A CURVE DATA:**  
 PROP. CURVE PRRAMPA-1  
 PI STA. = 12+45.32  
 $\Delta = 5^\circ 37' 04''$  (LT)  
 D = 1° 08' 45"  
 R = 5,000.00'  
 T = 245.32'  
 L = 490.25'  
 E = 6.01'  
 e = -3.20%  
 T.R. = 0'  
 S.E. RUN = 0'  
 P.C. STA = 10+00.00  
 P.T. STA = 14+90.25

**PROP. CURVE PRRAMPA-2**  
 PI STA. = 15+85.19  
 $\Delta = 3^\circ 15' 39''$  (LT)  
 D = 1° 43' 04"  
 R = 3,335.55'  
 T = 94.94'  
 L = 189.83'  
 E = 1.35'  
 e = -3.20%  
 T.R. = 0'  
 S.E. RUN = 0'  
 P.C. STA = 14+90.25  
 P.T. STA = 16+80.08

**PROP. CURVE PRRAMPA-3**  
 PI STA. = 19+71.50  
 $\Delta = 31^\circ 08' 08''$  (RT)  
 D = 11° 27' 33"  
 R = 500.00'  
 T = 139.30'  
 L = 271.71'  
 E = 19.04'  
 e = 6.00%  
 T.R. = 0'  
 S.E. RUN = 104'  
 P.C. STA = 18+32.20  
 P.T. STA = 21+03.91

SB MANNHEIM ROAD  
 NB MANNHEIM ROAD

CURVE PRRAMPA-1

RAMP A

CURVE PRRAMPA-2

CURVE PRRAMPA-3

MATCHLINE STA 82+00.00

**STATE OF ILLINOIS  
 DEPARTMENT OF TRANSPORTATION**

**ALIGNMENT, TIES & BENCHMARKS  
 MANNHEIM ROAD**

SCALE: 1" = 100' SHEET NO. OF SHEETS STA. 26+00.00 TO STA. 82+00.00

F.A.P. RTE.	SECTION	COUNTY	TOTAL SHEETS	SHEET NO.
330	0105 WRS&HB	COOK	605	54
CONTRACT NO. 60G37				
ILLINOIS FED. AID PROJECT				



USER NAME = ROBERT.ESQUIVEL	DESIGNED MT	REVISED -
DESIGNED MT	DRAWN MT	REVISED -
PLLOT SCALE = 100.0000' / 1"	CHECKED VT	REVISED -
PLLOT DATE = 10/18/2012	DATE 10/19/2012	REVISED -